



Aptio[®]V

AMIBCP for Aptio[®] V

AMI BIOS Configuration Program (AMIBCP) is a powerful customization utility that enables OEMs/ODMs to customize the Aptio[®] ROM image without intervening on the source code and rebuilding the BIOS. With AMIBCP, it is possible to obtain multiple ROM image flavors ready for production. AMIBCP supports x86, x64 and ARM architectures. AMI may generate a customized version of AMIBCP utility for customers' redistribution to their end users.

AMIBCP for Aptio[®] is an easy to use graphical tool supporting Microsoft[®] Windows[®] and Linux operating systems.

AMIBCP is utilized to modify several parameters:

- Configure Aptio[®] system setup
- Edit the register tables
- Edit the legacy PCI routing table
- View and edit Aptio[®] strings
- View and modify DMI/SMBIOS tables
- View and modify Boot Order

Some of these features may not be supported by the firmware to be edited, in which case the corresponding tab will not appear.



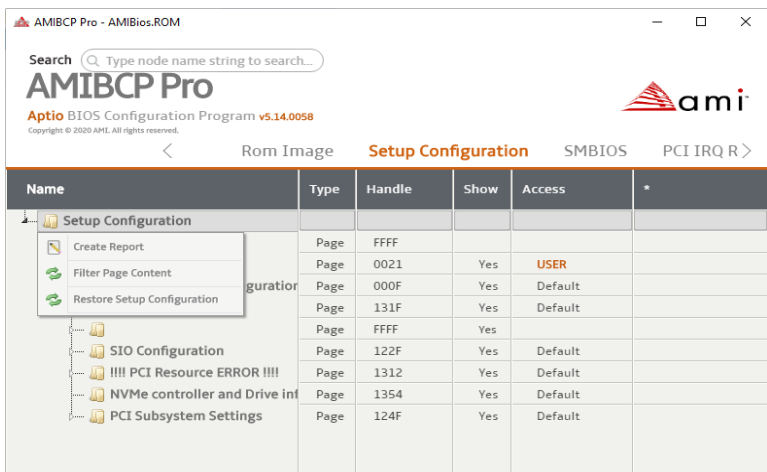
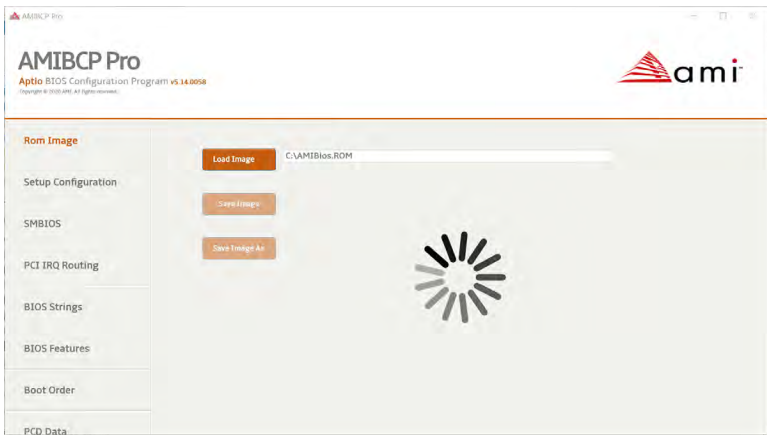


The AMIBCP setup configuration function allows to:

- Edit setup questions
- Show or hide setup screens and setup questions
- Modify access levels and usage
- Edit failsafe and optimal values.

The PCI IRQ routing tables tab allows you to view and modify the PCI IRQ routing table that is used by the BIOS.

The BIOS Features tab allows you to view and configure some of the Aptio® features:



For more information please visit: ami.com/contact

©2021 AMI. All rights reserved. Product specifications are subject to change without notice. Products mentioned herein may be trademarks or registered trademarks of their respective companies. No warranties are made, either expressed or implied, with regard to the contents of this work, its merchantability or fitness for a particular use. This publication contains proprietary information and is protected by copyright. AMI reserves the right to update, change and/or modify this product at any time.





- BIOS date
- BIOS name
- Processor
- Major version
- ID string 1
- BIOS size
- BIOS tag
- Reference number
- Minor version
- CPU microcode update patches
- Sign on message
- OEM data (if available)

Rom Image	Name	PciBusNumber	DeviceNumber	IntAReg	IntABitmap	IntBReg	IntBBitmap	IntCReg	IntCBitmap	IntD
	PCI IRQ DATA									
Setup Configuration	PCI Index 0	00	00	00	0000	00	0000	00	0000	00
	PCI Index 1	00	00	00	0000	00	0000	00	0000	00
	PCI Index 2	01	01	01	DC78	02	DC78	03	DC78	04
SMBIOS	PCI Index 3	02	01	00	0000	00	0000	00	0000	00
	PCI Index 4	03	01	00	0000	00	0000	00	0000	00
	PCI Index 5	00	00	01	DC78	02	DC78	03	DC78	04
PCI IRQ Routing	PCI Index 6	00	00	02	DC78	03	DC78	04	DC78	01
	PCI Index 7	00	00	03	DC78	04	DC78	01	DC78	02
	PCI Index 8	00	02	01	DC78	00	0000	00	0000	00
BIOS Strings	PCI Index 9	00	02	00	0000	00	0000	00	0000	00
	PCI Index 10	00	04	01	DC78	00	0000	00	0000	00
	PCI Index 11	00	05	01	DC78	00	0000	00	0000	00
BIOS Features	PCI Index 12	00	08	01	DC78	00	0000	00	0000	00
	PCI Index 13	00	1F	01	DC78	02	DC78	03	DC78	04
	PCI Index 14	00	1F	01	DC78	00	0000	00	0000	00
Boot Order	PCI Index 15	00	1F	01	DC78	00	0000	00	0000	00
	PCI Index 16	00	1F	01	DC78	00	0000	00	0000	00



For more information please visit: ami.com/contact

©2021 AMI All rights reserved. Product specifications are subject to change without notice. Products mentioned herein may be trademarks or registered trademarks of their respective companies. No warranties are made, either expressed or implied, with regard to the contents of this work, its merchantability or fitness for a particular use. This publication contains proprietary information and is protected by copyright. AMI reserves the right to update, change and/or modify this product at any time.





The BIOS Boot Order tab allows you to configure the boot order for the initial system boot.

The DMI tables tab allows you to view and modify the SMBIOS tables which include system information, firmware information, baseboard, and more.

The firmware image generated will have to be re-signed in order to be used with AFU, but may be flashed as is making use of a flash programmer.

AMIBCP Pro - AMIBios.ROM

Search

AMIBCP Pro

Aptio BIOS Configuration Program v5.14.0058
Copyright © 2020 AMI. All rights reserved.

Navigation: < Rom Image **Setup Configuration** SMBIOS PCI IRQ R >

Name	Type	Handle	Show	Access	*
Setup Configuration					
SetupData	Page	FFFF			
Setup	Page	0021	No	Default	
Main	Page	0023	Yes	Extended User	
Advanced	Page	0038	Yes	Default	
Chipset	Page	0039	Yes	Default	
Security	Page	0055	Yes	Default	
Boot	Page	003A	Yes	Default	
Save & Exit	Page	0068	Yes	Default	
Demo Board	Page	122A			
NB Porting Configuration	Page	0297			
GOP Configuration	Page	09E2			
Global Acoustic Configuratio	Page	000F	No	USER	
Recovery	Page	131F	Yes	Default	



For more information please visit: ami.com/contact

©2021 AMI All rights reserved. Product specifications are subject to change without notice. Products mentioned herein may be trademarks or registered trademarks of their respective companies. No warranties are made, either expressed or implied, with regard to the contents of this work, its merchantability or fitness for a particular use. This publication contains proprietary information and is protected by copyright. AMI reserves the right to update, change and/or modify this product at any time.

