

AMP19

PeriFlo[®] AMP Series

AMP19 — a real workhorse of a general-purpose pump.

Like all Pulsafeeder peristaltic pumps, the AMP19 is ideally suited for water and wastewater treatment, petrochemical and mining industries — including polymers and slurries.



Applications

Metering, batching, transfer and sampling



Flow

to 147 gph (556 lph)



Pressure

to 30 psi (2 bar)



Temperature

Product to 176° F (80° C)
Ambient to 104° F (40° C)



Peristaltic pumps deliver more than you expect

Simple operating design

The simple design of a PeriFlo[®] pump results in a pump that is valveless and sealless (creating a gentle pumping action), has reversible rotation, high suction lift, higher solids content handling ability and easy maintenance.

Variety of Media

Thanks to its gentle pumping action, a peristaltic pump can handle a variety of media where other technologies are unsuccessful, including chemicals, slurries, viscous, abrasive or shear sensitive media such as polymers.

Pump Longer

The simple design means there are no valves to change and no seals to replace. The hose or tube element is the common wear part and is easy to replace. This means **less** down-time, **less** spare parts inventory and **more** pumping.

Specifications

Max capacity	0.028 gal/rev
Max flow rate	147 gph (556 lph)
Connections	1" MNPT, 1" Camlock
Compressor	Rollers
Max tube pressure	30 psi (2 bar)
Max hose pressure	NA

Features & Benefits

- Sealless and Valveless
- Close coupled
- Abrasion resistant
- Dry-run capable
- Self priming to 27 ft.
- Reversible rotation
- Easy maintenance

Materials of Construction

Tube: Norprene

Connections: Male NPT: PVC or stainless steel as standard;
Optional: Male NPT PVDF or Camlock PVC

Casing: Powder coated aluminum

Rotor: Black oxide steel

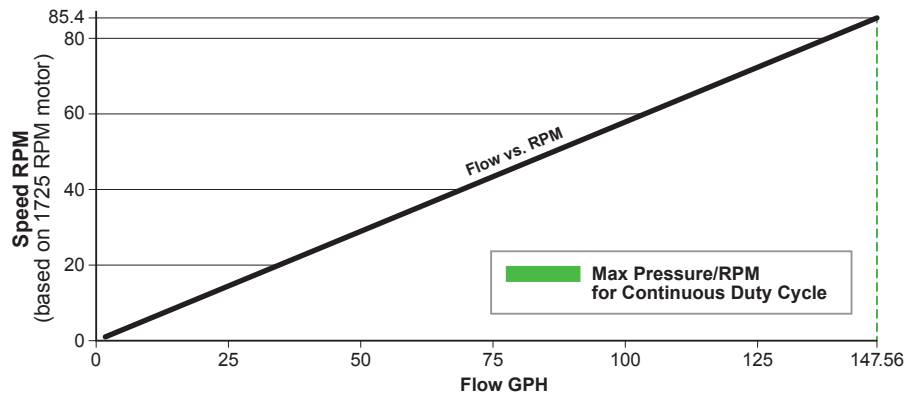
Rollers: Black oxide steel

Hardware: Stainless steel

Drives & Accessories

- Variable speed controls with industry standard I/O's
- Tube/Hose leak detection
- Pulsation dampeners
- Suction accumulators
- Pressure relief valves

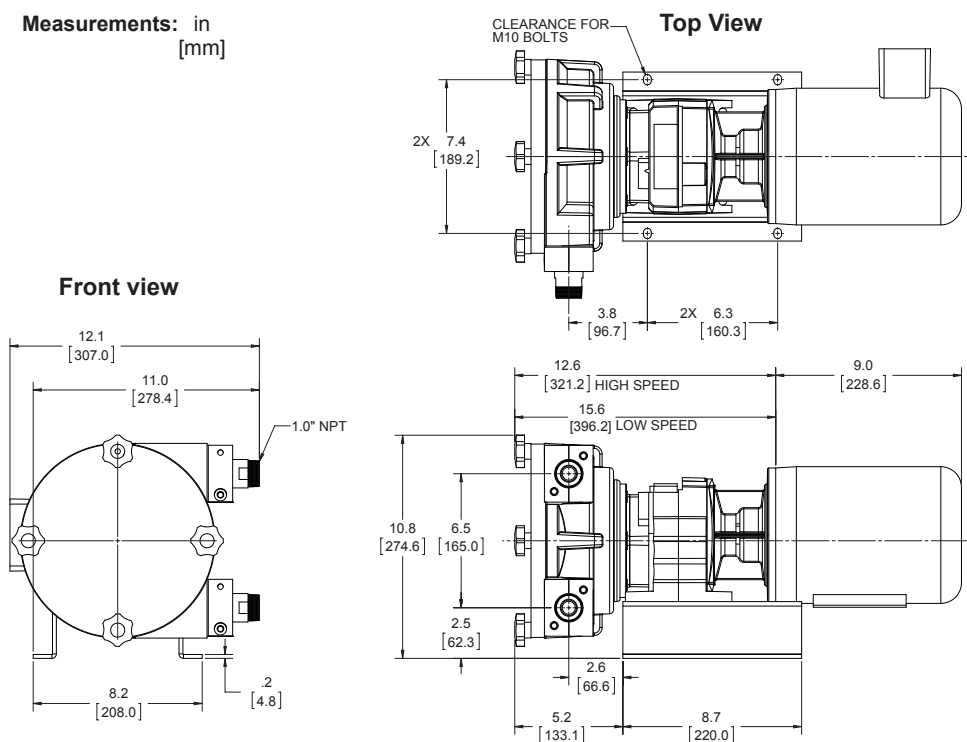
Performance



Note: AMP19 is only available in Norprene Tube and has a maximum allowable working pressure of 30 psi. Continuous Duty = run time greater than 2 hours

Dimensions

Measurements: in [mm]



AMP19 Weight (with standard motor): 70 lbs.



Pulsafeeder Engineered Products

A Unit of IDEX Corporation

2883 Brighton Henrietta TL Rd • Rochester, NY 14623

Phone: +1 (585) 292-8000 • pulsa@idexcorp.com

pulsa.com



Spec Pulsafeeder.
Get more than you expect.

© Copyright 2014 Pulsafeeder. All Rights Reserved.

PFAMP19spec_Rev0314