

IBI INFO

Providing the latest updates on IBI's research, tools, news and upcoming events

[NEWSLETTER ARCHIVE >](#)



What's New

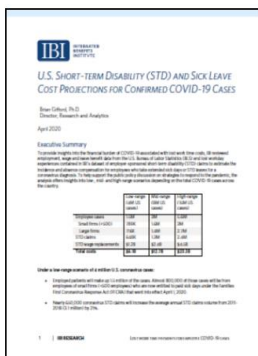
April 2020

IBI Board Chairman Speaks to Members

As the coronavirus pandemic continues to compel businesses to re-evaluate their future focus, investments and needs, we are making sure that IBI remains a responsive, valuable and engaged organization during these challenging times. To reaffirm IBI's mission and agenda for the remainder of the year, the Executive Committee and IBI staff have been meeting to assess our roadmap moving forward. Chairman Phil Lacy sends out a letter to provide updates to members below.

[Read Chairman's Letter](#)

Latest Research Publications and Presentations from IBI

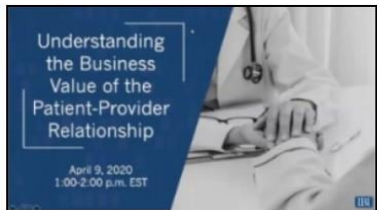


COVID-19 Paid Leave Cost Projections

IBI conducted an analysis to help US employers understand the potential financial impact of the COVID-19 pandemic. Findings reveal that sick leave and short-term disability payments could exceed up to \$23 billion for employers, depending on the number of coronavirus cases. Details of the study and infographic can be found below.

[View the Report](#)

[View Infographic](#)

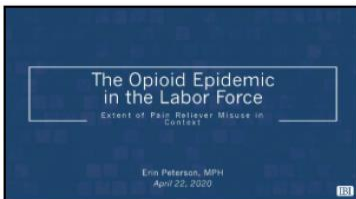


The Business Value of the Patient- Provider Relationship

Recent research conducted by IBI research fellow Adrienne Sabety, Harvard Ph.D. candidate in Health Policy Economics demonstrates what happens when there are disturbances to patient-provider relationships and the influence it has on health care consumption and overall health. IBI published an accompanying report and hosted a webinar On April 9, IBI published an accompanying report and hosted a webinar with chief medical officers to discuss the implications for businesses and considerations to factor it into workforce health management decisions.

[View the Report](#)

[View Webinar](#)



The Opioid Epidemic in the Labor Force—IBI's Presentation at KHC's Pain Symposium

At the the Kentuckiana Health Collaborative (KHC) event, IBI Researcher Erin Peterson presented on a framework to help employers better understand the full economic impact of a healthy workforce, and how the interests of employee health and business outcomes can be aligned—using [IBI's research on opioids](#) as a case example. She discussed how the high rates of prescription pain reliever use in the workforce reflects a larger underlying need for effective pain management which can in turn help improve productivity as well as detailed strategies for businesses to prevent or alleviate the consequences of pain reliever misuse.

[View Slides](#)

COVID-19 Resource Page Now Available on IBI's Website

As COVID-19 brings forth evolving changes and challenges, IBI has created [a repository of resources](#) to help the businesses stay informed on the latest research, data, and information regarding COVID-19. This community resource page features information ranging from [government guidance](#), COVID-19 [progression trackers](#), cost and intervention [projections](#), suggested [published research](#) readings, and more.

[View Resource Page](#)

What's Upcoming

Building a Culture of Health Webinar on May 12 at 1pm EDT

Lead IBI researcher Erin Peterson will be facilitating a [webinar](#) and online discussion with employers from World Bank, Johnson & Johnson, and Shell Oil Company to share strategies and guidance on shaping a culture of health in the workplace and the effects they have seen as a result. An accompanying publication will also be released on that day to make building a culture of health actionable for employers.

[Register Today](#)

Registration Now Open for The IBI/Conference Board Health and Productivity Forum

The Forum annually convenes more than 500 thought leaders, employers, and their industry partners to explore innovative solutions in managing the “whole picture” of health, wellbeing, productivity and business performance. The Forum will take place this year on September 15-16, 2020 at the Marriott Marquis Chicago with pre-conference workshops beginning in the afternoon of the 14th.

Session sponsorship opportunities are still available and can be found [here](#). If you are interested in sponsoring, please email forum@ibiweb.org.

[Register Today](#)

Blog

What can Businesses Learn from the 1918 Spanish Flu and Apply to the COVID-19 Response Today

By: Erin Peterson, Researcher

Although there is a great deal of speculation surrounding the social and economic outcomes of the novel coronavirus (Covid-19) pandemic, examining prior public health emergencies can provide some insight into these questions....

[Read More](#)

Research Review

Snapshot from the latest [IBI Research Review](#):

Economic Model Shows Containment Strategies Will Increase Recession Severity but Saves Millions of Lives
[National Bureau of Economic Research](#)

Researchers modelled the interaction between economic decisions and epidemics to find that COVID-19 containment policies that can slow the rate of infection (e.g., stay at home orders, closure of non-essential businesses) are expected to result in....

[Read More](#)

IBIBridge Featured Discussion

We have built [IBIBridge](#) to provide you with a tool to privately connect, strategize, and get answers to questions on your most pressing health and productivity issues—in today’s world, it’s about managing challenges presented by COVID-19. This week’s question of the week on IBIBridge is below:

A dark blue rectangular graphic with white text and illustrations. On the left, the 'IBI BRIDGE' logo is in a white rounded rectangle. Below it, the text reads 'Question of the Week:' followed by the question: '"How are you addressing employee anxiety and facilitating access to resources and support they need to navigate through this pandemic?"'. At the bottom center is a white button with the text 'Join the Conversation'. On the right side, there is an illustration of three stylized human figures in various poses, surrounded by gears and speech bubbles, with potted plants at their feet.

IBI BRIDGE

Question of the Week:

"How are you addressing employee anxiety and facilitating access to resources and support they need to navigate through this pandemic?"

Join the Conversation

[Register](#)

[Log In](#)

Newsroom

IBI in the News

[Analysis Finds Aggressive Social Distancing Measures Economically Justified](#)

AJMC

[Coronavirus cost to employee benefit plans could exceed \\$23B](#)

HRDive

[Crisis shines light on caregiving benefits](#)

Human Resource Executive

[Study Presents Stark Reality of Potential COVID-19 Costs to Employers, Insurers](#)

WorkersCompensation.com

[Coronavirus-related paid employer leave could exceed \\$23 billion](#)

Employee Benefit News

[Coronavirus-related paid employer leave could top \\$23 billion](#)

Human Resource Executive

[Lost Time From Work Due to COVID-19 Could Cost Employers Billions, Study Finds](#)

AJMC

[What Does Patient Financial Responsibility Look Like with Coronavirus?](#)

PatientEngagementHIT



IBI is the leading not-for-profit organization focused on the connections among workforce health, wellbeing, medical care, absence and productivity. We provide research, benchmarking, education and the tools to help guide sound decisions in workforce health investments. For more information, please visit www.ibiweb.org.

Upcoming Events

May 12: [Webinar: Building a Culture of Health in the Workplace](#)

September 15-16: [Conference: IBI/Conference Board Health and Productivity Forum](#)



[View it in your browser.](#)

Copyright © %%current_year_YYYY%%, All rights reserved.

Our mailing address is:

Integrated Benefits Institute
1901 Harrison Street, Suite 1100
Oakland California, 94612

[unsubscribe from all emails](#) [opt out from email list](#)