

The IBM logo is positioned at the top left. The word "INSIGHT" is written in large, bold, white capital letters. Below it, the tagline "Providing unbiased insights and resources to help manage health and productivity at work" is displayed in a smaller, white font. The background features a blue hexagonal pattern with various icons representing different industries and concepts, such as a pie chart, a world map, a person wearing a hard hat, a truck, a lightbulb, gears, a handshake, and a person riding a bicycle. A hand is visible on the right side, interacting with one of the hexagons.

Providing unbiased insights and resources to help manage health and productivity at work



Explore IBI's independent research on the most timely, compelling issues affecting health and productivity

IBI's analytic tools help you  
benchmark and assess benefits  
program performance

Online community for employers to connect and share perspectives on workforce health issues and solutions

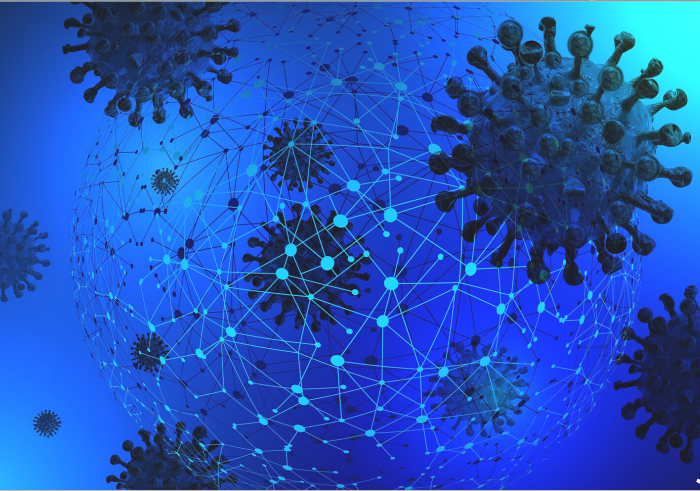
Join the IBI community of 1200+ employers and industry partners for various networking and educational opportunities





# IBI RESEARCH

Recent research publications to help employers & industry partners make sound decisions on issues affecting health and productivity



## U.S. Short-Term Disability and Sick Leave Cost Projections for Confirmed COVID-19 Cases



### Managing Health and Productivity in the Age of Coronavirus



### Interactive Map: Projected COVID-19 Employer Paid Leaves Costs By State & County



### Making a Culture of Health Actionable for Employers

## The Business Value of the Patient-Provider Relationship





Assess benefits program performance and understand the health status and productivity level of the workforce



## Disability and Leave Benchmarking Database

Access industry-specific benchmarking reports from the nation's largest leave/disability database of 9+million claims from 100,000 employer policies



### Absence Cost Estimator

Understand the total cost of absence in your company and where there are opportunities for improvement



### Full Cost Estimator

Allows you to create custom models of the impact of illness on a variety of costs including sick days, illness-related leaves and presenteeism

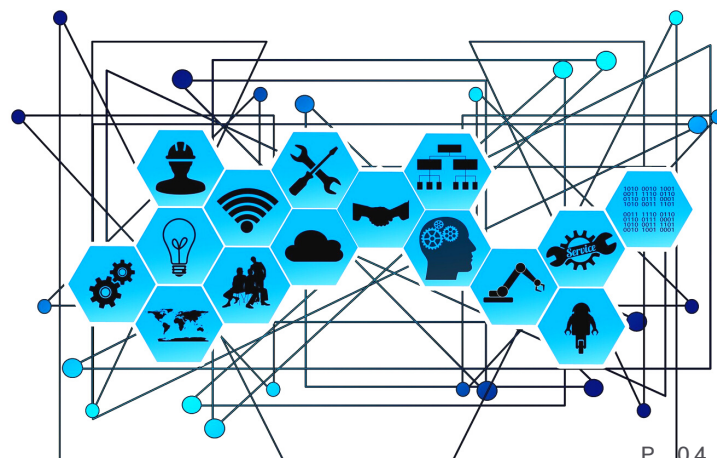


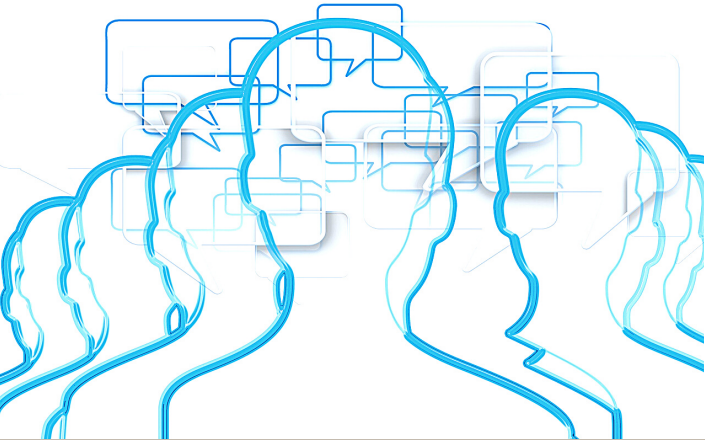
### Health and Productivity Snapshot

Estimate absence and lost productivity costs of chronic conditions expected in the workforce

## Disability Diagnosis Analyzer

Illustrate the disability burden of illnesses or conditions, providing average incidence rate, costs, and duration of leave





## Join the Conversation:

How are you adapting the office/workplace to implement social distancing?



### Explore Strategies

Work with leading subject-matter experts to gather guidance and solutions to your most pressing workforce health issues



### Ask Questions

Pose questions to your peers to hear what others are doing at their organizations



### Network

Get connected to others who are also working through the complexity of managing workforce health, well-being, care, absence and productivity

## Virtual Roundtables

Participate in virtual roundtables with employer panels to discuss the most prevalent issues seen on IBIBridge





# IBI EVENTS

Our events bring together a community of 1200+ employers and industry partners for various networking and educational opportunities.  
[Interested in becoming a member?](#)



## May 20 Webinar: New Tool for Estimating COVID-19 Employee Cases & Leave Costs

View data by state and county-level



## May 12 Webinar: Building a Culture of Health in the Workplace



## April 9 Webinar: Understanding the Business Value of the Patient- Provider Relationship



## March 17 Webinar: How Employers Can Shape Patient-Centered Outcomes

## Annual Health & Productivity Forum

Annually convenes 500+ thought leaders, employers, and their industry partners to explore innovative solutions in managing the whole picture of health, well-being, productivity and business performance.

The Forum is going virtual this year and will be hosted on Sept 14-18.

