

January 2021

# IBI INSIGHT

*Providing unbiased insights and resources to help manage health and productivity at work*



## RESEARCH

Explore IBI's independent research on the most timely, compelling issues affecting health and productivity.



## TOOLS

IBI's analytic tools help you benchmark and assess benefits program performance.



## UPDATES

Check IBI's latest news, updates, and media highlights here.

## EVENTS

Join the IBI community of 1,200+ employers and industry partners for various networking and educational opportunities.

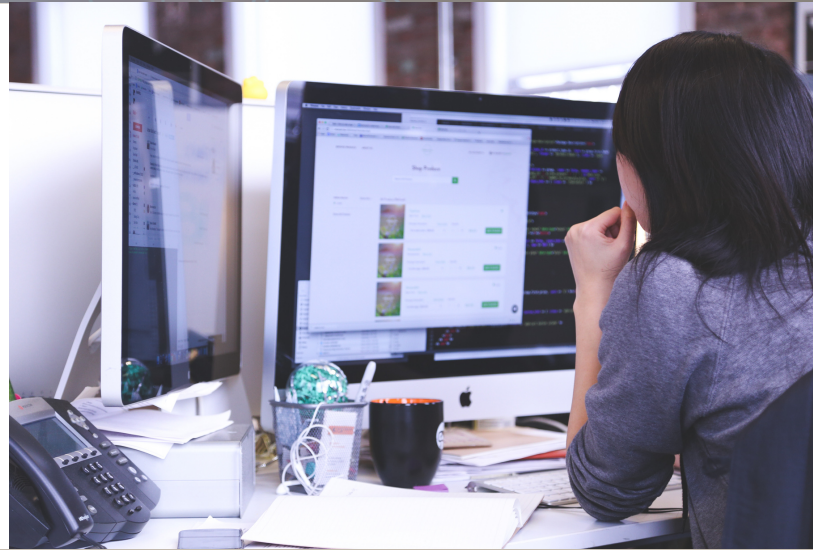
[BECOME AN IBI MEMBER TODAY.](#)





## Patient-Reported Productivity Outcomes: Do Researchers Measure What Employers Care About?

A look into how researchers assess employee productivity and how effectively they communicate the value of high-quality treatments to employers.



## Preserving Health and Productivity in Times of Chaos

IBI Research Director Brian Gifford's latest editorial on climate change was published in The American Journal of Health Promotion.

## IBI Research Review

Monthly newsletter that pulls together the latest peer-reviewed research on workforce health and productivity.

January's edition discussed health care costs associated with pollution, job autonomy's effect on the number of sick days taken, and more.

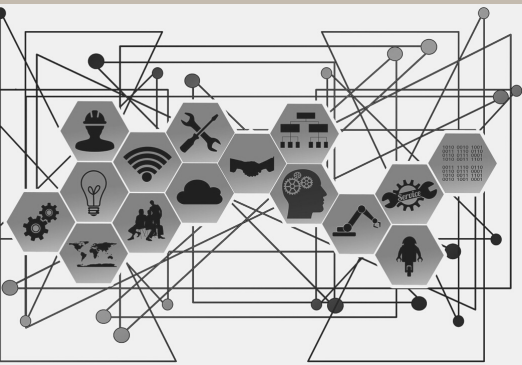






# Disability and Leave Benchmarking

A man in a dark suit and glasses is looking down at a document he is holding. The image has a blue tint and is overlaid with a glowing white line graph that trends upwards. The background is filled with a grid pattern and various financial data points, including numbers like 73.5, 50.17, 79.09, and 99.03, suggesting a financial or economic context.



## Full Cost Estimator

Model the costs of poor health in the workplace, including absence, disability, presenteeism and opportunity costs all in a single online tool.



## Health and Productivity Snapshot

Estimate absence and lost productivity costs of chronic conditions expected in the workforce.

# Interactive Map: Projected COVID-19 Employer Paid Leave Costs

Estimate disability and leave costs associated with confirmed COVID-19 cases by state or metro area. The data in the map is updated daily.





*Read the highlights below to see what is new at IBI and what is upcoming.  
Check out where IBI's work has been featured as well.*

## Another Way to Measure Employee Productivity Could Benefit Employers

IBI Research Lead Nicole Nicksic, PhD discusses how productivity data that is translated into financial terms can help bridge the information gap between clinical researchers, vendors, and employers.



## We All Have a Part to Play in Reducing Health Inequities in the Workforce

IBI Research Director Brian Gifford, PhD offers a small step that health and productivity researchers can take to help address racial health inequities.



## Navigating the COVID-19 Vaccine Rollout will Require Thoughtfulness and Patience

IBI Researcher Erin Peterson, MPH offers some considerations for employers as the vaccine rollout begins.







Our events bring together a community of 1,200+ employers and industry partners for various networking and educational opportunities.

[Interested in becoming a member?](#)

January 14, 2021

## The State of Migraine Disease in the Workplace

Understand how migraine impacts employees in the workplace and how to maximize support to ensure maximum productivity. You can access the recording [here](#).



February 10, 2021

## How Employers Can Address the Impact and Cost of Chronic Conditions Affecting their Workforce

As part of a webinar series hosted by World Congress, IBI will be presenting on the productivity impacts of Osteoarthritis and strategies employers can implement to help employees manage the condition.

July 29, 2021

## Data and Analytics Symposium

One day program hosted by IBI and the Greater Philadelphia Business Coalition on Health to help employers and their vendor/partners find a pragmatic and useful strategy for identifying and using the right data for managing health-related programs. Save the date!

