

The background is a deep blue with a network of white lines. Overlaid on this are several hexagonal icons in a lighter blue shade. These icons include a pie chart, a world map, a person wearing a hard hat, a factory, a lightbulb, a gear, a wrench, a person's head with gears inside, a person on a bicycle, a handshake, a truck, a person at a computer, and a person with a magnifying glass. A hand is visible on the right side, pointing towards the icons. The IBM logo is in the top left corner, and the word 'INSIGHT' is in a large, white, sans-serif font in the center. Below it, the tagline 'Providing unbiased insights and resources to help manage health and productivity at work' is written in a smaller, white, sans-serif font. The date 'December 2020' is in the top right corner.

December 2020

IBM INSIGHT

Providing unbiased insights and resources to help manage health and productivity at work

Providing unbiased insights and resources to help manage health and productivity at work



Explore IBI's independent research on the most timely, compelling issues affecting health and productivity.

IBI's analytic tools help you benchmark and assess benefits program performance.

Check IBI's latest news,
updates, and media highlights
here.

Join the IBI community of 1,200+ employers and industry partners for various networking and educational opportunities.





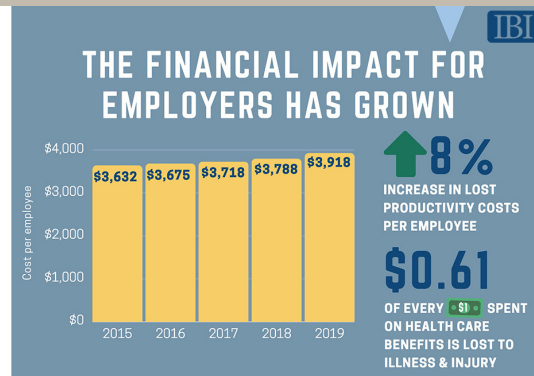
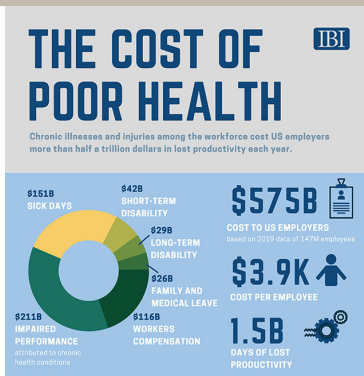
IBI RESEARCH

Recent research publications to help employers & industry partners make sound decisions on issues affecting health and productivity



Preserving Health and Productivity in Times of Chaos

IBI Research Director Brian Gifford's latest editorial on climate change was published in The American Journal of Health Promotion.



Infographic: The Cost of Poor Health

Illness-related productivity loss costs employers \$575 billion and 1.5 billion lost work days annually.

Infographic Continued

For every dollar spent of the \$950 billion spent on health care benefits, another 61 cents is spent on illness and injury.

Infographic Continued

The composition of lost productivity due to illness has changed: workers' compensation incurs fewer lost workdays, but gains are eclipsed by increases in disability and family leave.

IBI Research Review

Monthly newsletter that pulls together the latest peer-reviewed research on workforce health and productivity.

December's edition discussed presenteeism in the age of COVID-19, telemedicine and more.



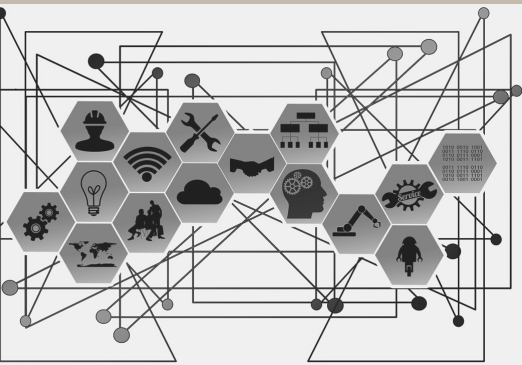


Assess benefits program performance and understand the health status and productivity level of the workforce



The Full Cost Estimator (FCE) has been updated with 2019 data.

The FCE helps you model the costs of poor health in the workplace, including absence, disability, presenteeism and opportunity costs all in a single online tool.



Disability Diagnosis Analyzer

Illustrate the disability burden of illnesses or conditions, providing the average incidence rate, costs, and duration of leave.



Medication Adherence Savings Calculator

Recognize how adherence with diabetes, hypertension, or high cholesterol medications reduces health care and lost productivity costs.



Health and Productivity Snapshot

Estimate absence and lost productivity costs of chronic conditions expected in the workforce.

Disability and Leave Benchmarking

Access the nation's largest disability/leave database of over 9M claims from 100,000 employer policies. Customize reports to compare outcomes with industry peers.





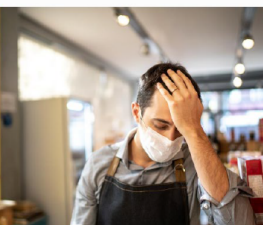
UPDATES

Read the highlights below to see what is new at IBI and what is upcoming. Check out where IBI's work has been featured as well.

Forbes

Worker Health Costs U.S. Employers \$575 Billion A Year

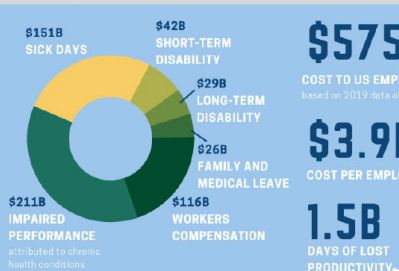
By Jessica J. Japen, Senior Contributor @IBI
IBI is about healthcare business and policy



Health costs U.S. employers \$575 billion a year from everything from lost

THE COST OF POOR HEALTH

Chronic illnesses and injuries among the workforce cost U.S. employers more than half a trillion dollars in lost productivity each year.



IBI's research on illness-related productivity costs was recently highlighted in Forbes: Poor Worker Health Costs U.S. Employers \$575 Billion A Year



4 strategies to support employee caregivers during COVID-19

IBI Research Lead Nicole Nicksic shares findings from her caregiving research and provides recommendations for employers



WC Incurs Fewer Lost Workdays, But Gains Eclipsed by Increases in LTD and STD IBI Says

Nancy Grover from WorkersCompensation.com interviews IBI staff on most recent analysis.



December 16 Webinar: The Cost of Poor Health in the Workplace

IBI Research Director Brian Gifford discusses the recent findings from IBI's full cost estimator and its implications.

Employers need to get 'back on the path to good health' now

IBI President Kelly McDevitt sits down with Human Resource Executive's benefits editor Kathryn Mayer to discuss what should be on employers' priorities list for 2021.





IBI EVENTS

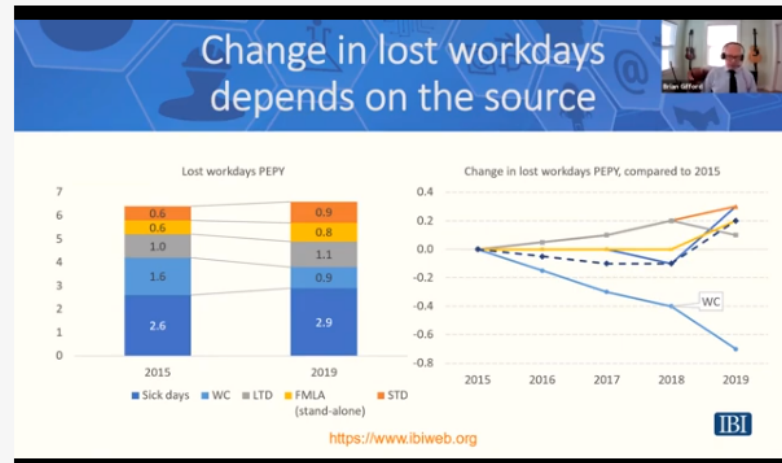
Our events bring together a community of 1,200+ employers and industry partners for various networking and educational opportunities.

[Interested in becoming a member?](#)

December 16, 2020

Webinar: The Cost of Poor Health in the Workplace

Every year, chronic illnesses and injuries among the U.S. workforce cost employers billions of dollars due to absences and lost productivity. IBI's Research Director Brian Gifford discussed the latest cost estimate, how and why that has changed over recent years, as well as implications for benefit professionals.



July 29, 2021

IBI/GPBCH Data and Analytics Symposium

A one-day program in Philadelphia to help employers and their partners find a programmatic and useful strategy for identifying and using the right data.

October 5-6, 2021

Health & Productivity Forum

Annually convenes 500+ thought leaders, employers, and industry partners to explore innovative solutions in managing the whole picture of health, well-being, productivity and business performance. This event will take place at the Chicago Marriott Marquis.

