

Inspiring Great Spaces™



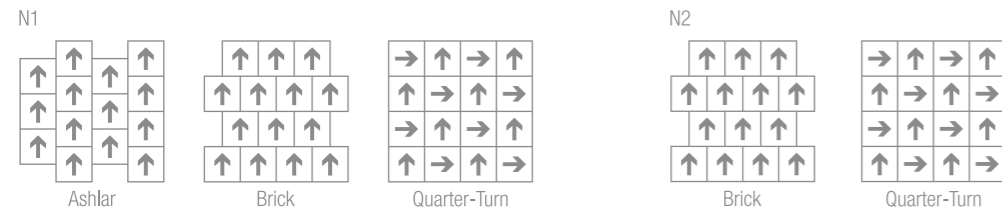
Inspiring Great Spaces™



Specification

	Normcore-N1	Normcore-N2
Product Name	Normcore-N1	Normcore-N2
Product Code	C00P0811	-
Tufted construction	Multi-level Pattern loop pile	Multi-level Pattern loop pile
Fiber	PRO-CARE Fiber Nylon	PRO-CARE Fiber Nylon
Dye method	100% Solution Dyed	100% Solution Dyed
Tufted weight(oz/yd ²)	15.0	14.0
Pile height(mm)	4.0±0.5	3.5±0.5
Total height(mm)	6.5±0.5	6.0±0.5
Tile size(mm)	500×500	-
Standard backing	PRO-CARE Backing	PRO-CARE Backing
Stain resist protection	PRO-CARE Self* guard	PRO-CARE Self* guard
*Anti-microbial	*PRO-CARE Ag* guard	*PRO-CARE Ag* guard
Indoor air quality	TVOC A grade≤0.500mg/m ³ h CRI GREEN LABEL PLUS	TVOC A grade≤0.500mg/m ³ h CRI GREEN LABEL PLUS

Recommended installation methods



www.armstrongflooring.asia
ARMSTRONG FLOORING OFFICES:

	TEL:	FAX:
Hong Kong	(852)2585 7800	(852)2598 7181
Singapore	(65)6604 6836	(65)6604 6835
Malaysia	(60)379 323 331	(60)379 606 331
Indonesia	(62)21 2965 7866	(62)21 2965 7867

All trademarks owned by AWI Licensing Company



H-CSF-Normcore-0319-PRC Printed in China

The above information is for reference purpose only. We shall have the right to make changes to the above details and information. We reserve the rights of final interpretation of the above information. All copyright is reserved, and any infringement will be pursued.

NORMCORE



PROFESSIONAL ADVANTAGES



PRO-CARE Fiber

Best collection of solution dyed nylon fiber within top international brands

Rich in color and easy to clean, It's colorfast with high color fastness

Advanced protective and antistatic treatment, which ensure the excellent performance and strong wear resistance of each fiber

*PRO-CARE Ag+guard

Using the most advanced Ag⁺ silver ion which continuously inhibits bacterial component, resulting in the lasting and effective inhibition of various bacteria breeding

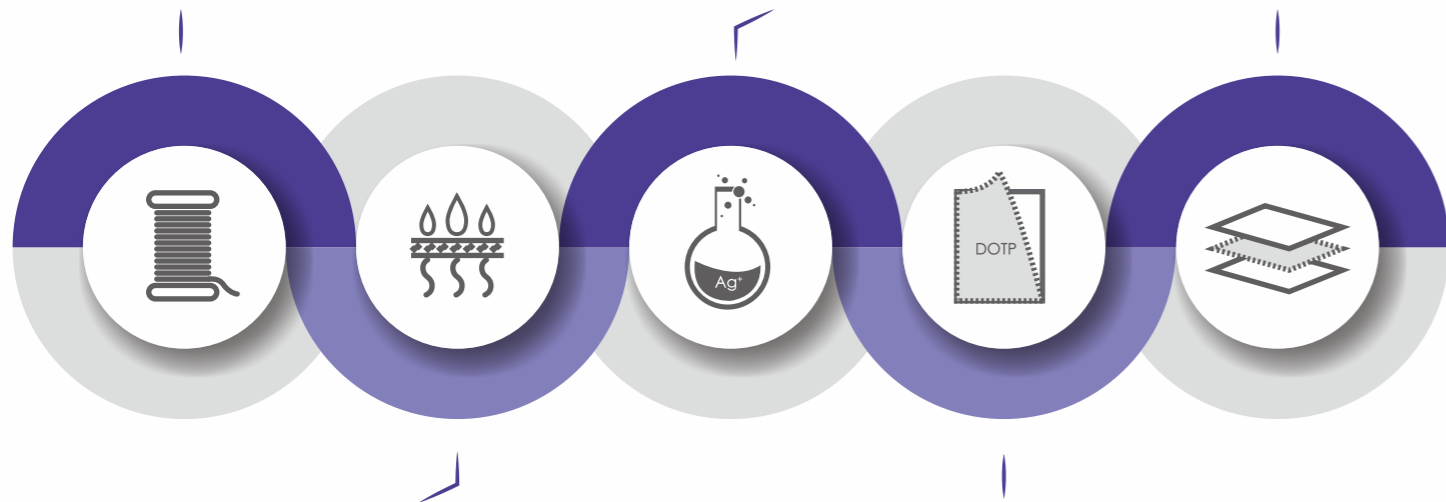
It does not contain cyanide poison and is safe and harmless to users and environment

PRO-CARE Sticker

Nontoxic and environmentally friendly transparent adhesive sticker

Efficient, convenient, time-saving and economical new installation method without glue

Applicable to all of carpet installation methods



PRO-CARE Self+guard

Carpet surface treatment from three dimensions (waterproof, anti-oil, antifouling) for each tile

The protection factors continue its penetration process, and the environmental safety formula does not contain PFOA, PFOS and other toxic harmful ingredients

The comprehensive protection, much more convenient for daily, and easier for daily cleaning

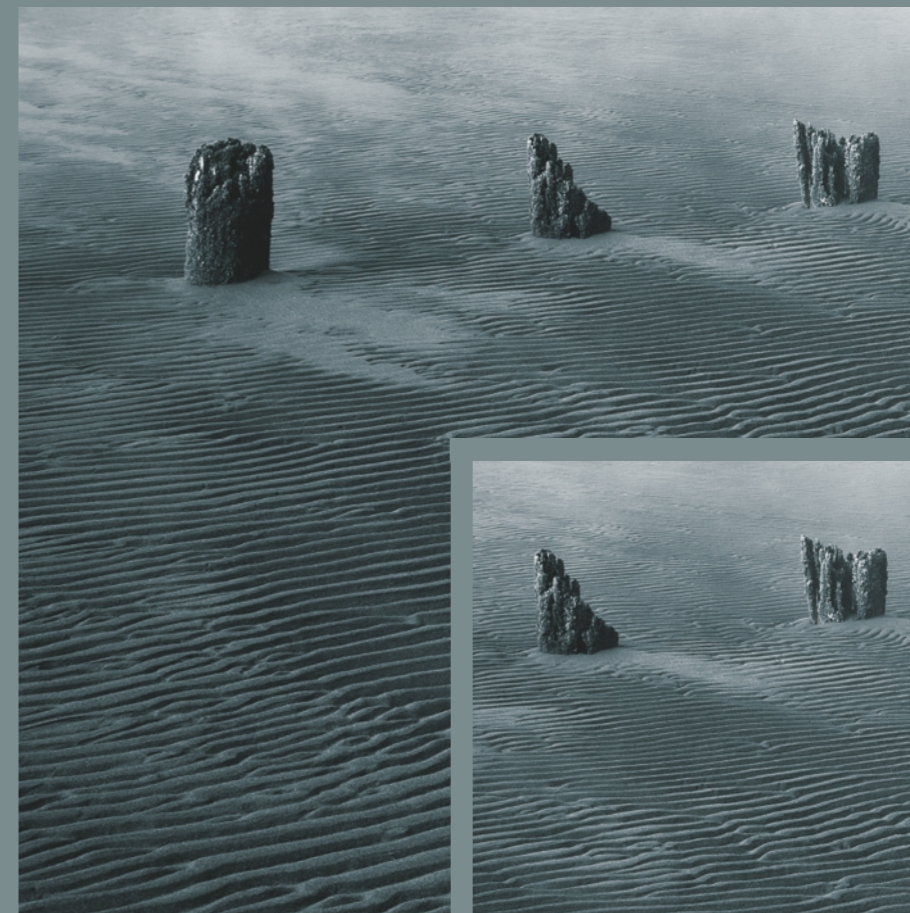
PRO-CARE Backing

The whole product line uses the unique Pro-care backing with no "ortho-benzene plasticizer" so that the toxic substances will not be released

In line with the latest EU regulation, "benzene based plasticizers" have been adopted to make our products mach safer and less toxic for both environment and users

Dense glass fiber layer is added on the backing to enhance the stability and durability of carpet tiles

Elegance involves minimalism and restraint, and contains the wisdom of simplicity. Normcore is a clean, monochromatic system that is low-key, soft, and unobtrusive. Its emotions are faint, but it seems as if there is something hidden underneath the "nothing-like" appearance. Cool colors skillfully blended together make the same space particularly brilliant. Do not rely on the external noise, but rather emphasize inner self-examination. Only with extreme confidence, have the courage to allow everything to return to its original appearance.



NORMCORE



design
in
motion





NORMCORE N2 C00P0811-11 Dirasv

NORMCORE N1 C00P0811-02 Gray

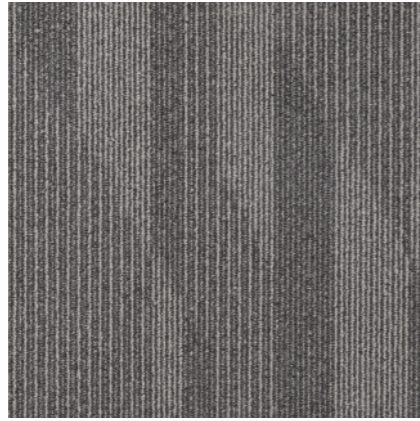




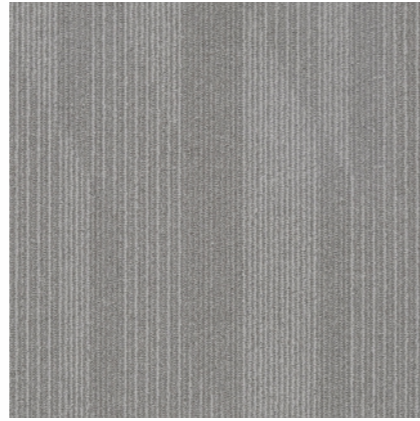
NORMCORE N2 C00P0811-14 Pine

NORMCORE
N1

NORMCORE
N2



C00P0811-01 Autumn



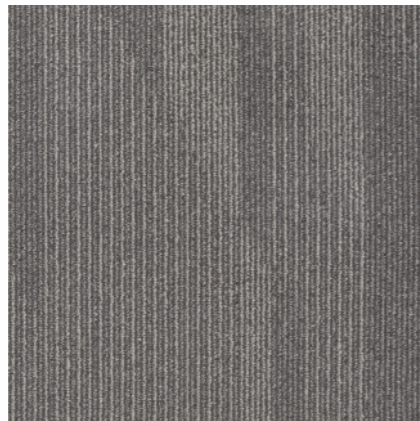
C00P0811-02 Gray



C00P0811-11 Dirasv



C00P0811-12 Sand



C00P0811-03 Mistg



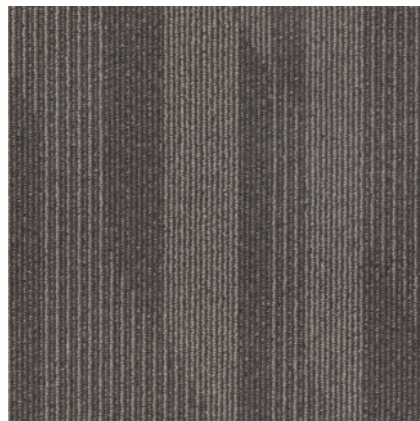
C00P0811-04 Pewtem



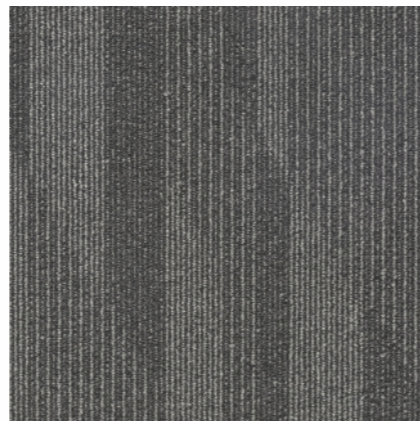
C00P0811-13 Ctawng



C00P0811-14 Pine



C00P0811-05 Ink



C00P0811-06 Pitch



C00P0811-15 Dawn



C00P0811-16 Drak