

ArmstrongFlooring™



STAGLAG



ARMSTRONG FLOORING OFFICES:

	TEL:	FAX:
Singapore	(65)6604 6836	(65)6604 6835
Malaysia	(60)379 323 331	(60)379 606 331
Indonesia	(62)21 2965 7866	(62)21 2965 7867

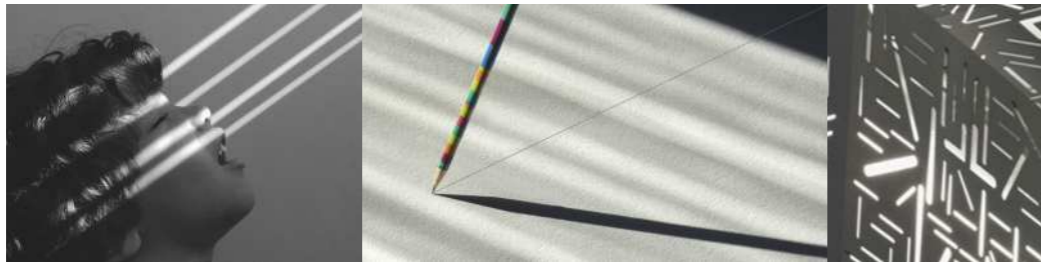
All trademarks owned by AWI Licensing Company

www.armstrongflooring.com

H-CSF-Staglag-0121-PRC Printed in China

The above information is for reference purpose only. We shall have the right to make changes to the above details and information. We reserve the rights of final interpretation of the above information. All copyright is reserved, and any infringement will be pursued.

STAGLAG

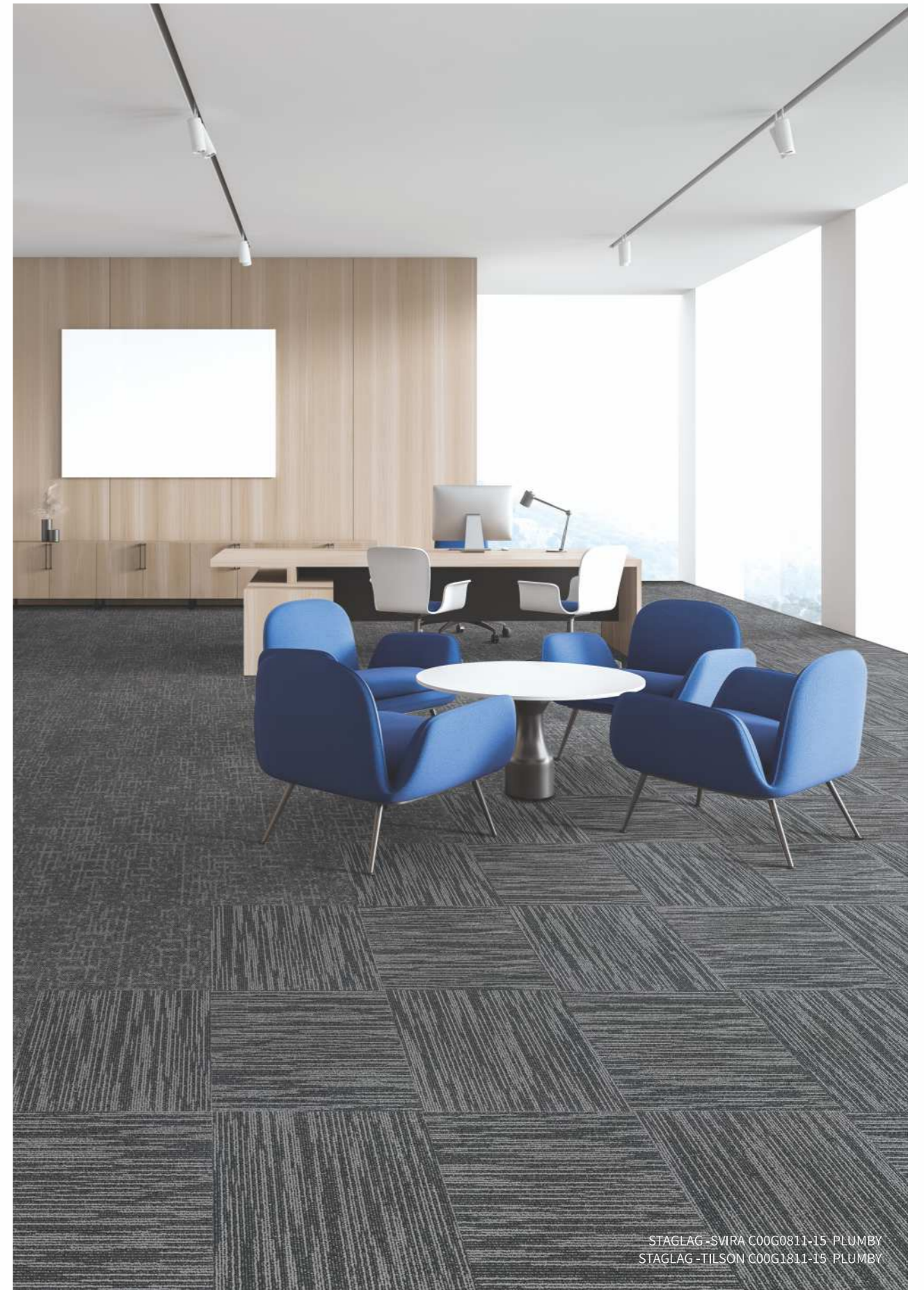


The beauty of nature is usually accompanied by lights and shadows. Beauty, either dynamic or static, would appear as light varies in an infinite manner. The regular stripes of this series make a strong contrast with the cross texture. And the rhythm of beauty abounds in the distinctive styles of patterns-extraordinary and beautiful.





STAGLAG-SVIRA C00G0811-14 PALE TAUPE
STAGLAG-TILSON C00G1811-14 PALE TAUPE



STAGLAG-SVIRA C00G0811-15 PLUMBY
STAGLAG-TILSON C00G1811-15 PLUMBY



STAGLAG-SMIRA C00G0811-16 CYPRESS
STAGLAG-FILSON C00G1811-16 CYPRESS



LIGHTS SHADOWS



STAGLAG -SVIRA C00G0811-17 CHARCOAL



STAGLAG-SVIRA C00G0811-11 DEEP CLOUD / C00G0811-15 PLUMBY / C00G0811-16 CYPRESS



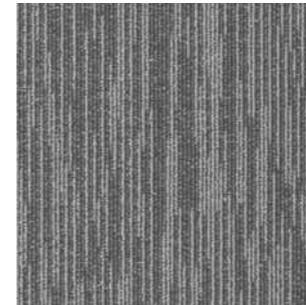
STAGLAG-SVIRA C00G0811-12 ROCK CRYSTAL



COLORS

STAGLAG

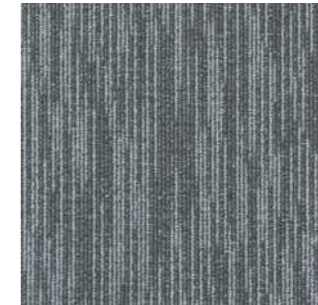
STAGLAG - SVIRA



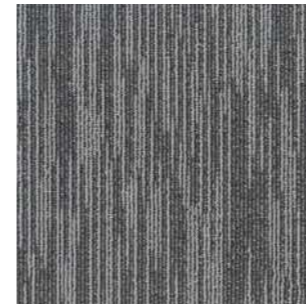
C00G0811-01 Plume



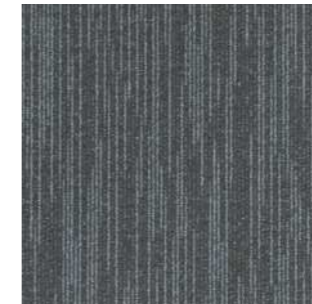
C00G0811-11 Deep Cloud



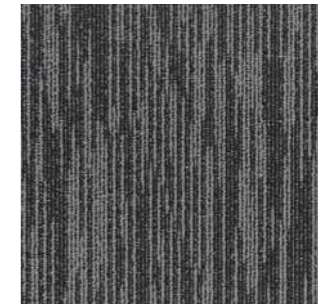
C00G0811-08 Dove Rain



C00G0811-12 Rock Crystal



C00G0811-09 Graphite



C00G0811-15 Plumby



C00G0811-13 Sandy Beige



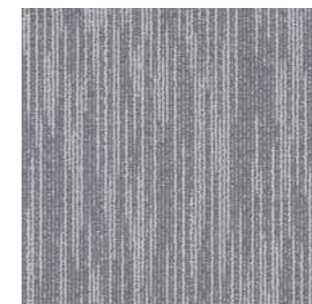
C00G0811-14 Pale Taupe



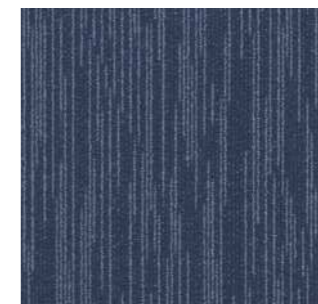
C00G0811-17 Charcoal



C00G0811-16 Cypress



C00G0811-18 Shadow



C00G0811-05 Blue Gulf

STAGLAG -SVIRA C00G0811-11 DEEP CLOUD / C00G0811-16 CYPRESS

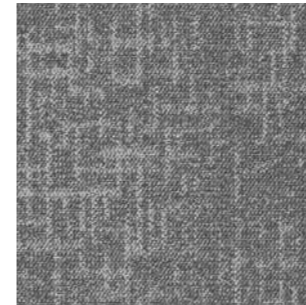


STAGLAG - Tilson C00G1811-13 Sandy Beige

COLORS

STAGLAG

STAGLAG - TILSON



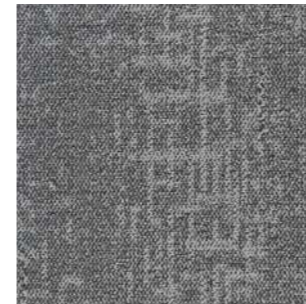
C00G1811-01 Plume



C00G1811-11 Deep Cloud



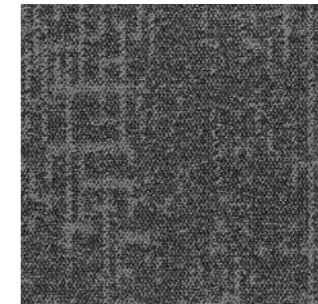
C00G1811-08 Dove Rain



C00G1811-12 Rock Crystal



C00G1811-09 Graphite



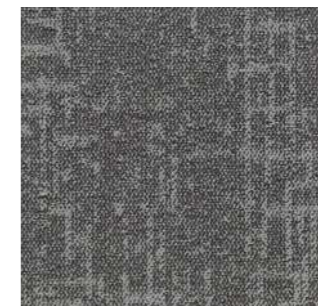
C00G1811-15 Plumby



C00G1811-13 Sandy Beige



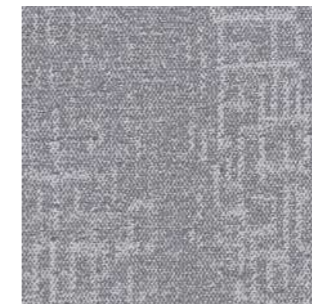
C00G1811-14 Pale Taupe



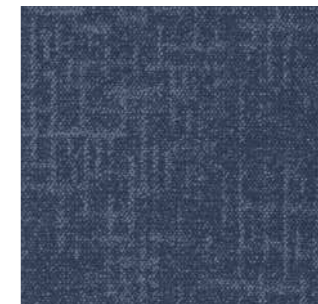
C00G1811-17 Charcoal



C00G1811-16 Cypress



C00G1811-18 Shadow



C00G1811-05 Blue Gulf

Technical

S T A G L A G



PRO-CARE

PRO-CARE Fiber

Best collection of solution dyed nylon fiber within top international brands

Rich in color and easy to clean, It's colorfast with high color fastness

Advanced protective and antistatic treatment, which ensure the excellent performance and strong wear resistance of each fiber



PRO-CARE

PRO-CARE Backing

The whole product line uses the unique Pro-care backing wrth no "brtho-benzene plasticizer" so that the toxic substances will not be released

In line with the latest EU regulation, "benzene based plasticizers" have been adopted to make our products mach safer and less toxic for both environment and users

Dense glass fiber layer is added on the backing to enhance the stability and durability of carpet tiles



PRO-CARE

PRO-CARE Self+ guard

Carpet surface treatment from three dimensions (waterproof, anti-oil, antifouling) for each tile

The protection factors continue its penetration process, and the environmental safety formula does not contain PFOA, PFOS and other toxic harmful ingredients

The comprehensive protection, much more conve-nient for daily, and easier for daily cleaning



PRO-CARE

PRO-CARE Sticker

Nontoxic and environmentally friendly transpar-ent adhesive sticker

Efficient, convenient, time-saving and economical new installation method without glue

Applicable to all of carpet installation methods



*PRO-CARE

*PRO-CARE Ag+ guard

Using the most advanced Ag+ silver ion which continuously inhibits bacterial component, resulting in the lasting and effective inhibition of various bacteria breeding

It does not contain cyanide poison and is safe and harmless to users and environment

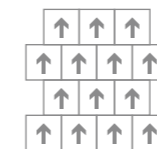
SPECIFICATION

STANDARD

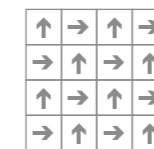
Product Name	Staglag - Svira	Staglag-Tilson	
Product Code	C00G0811	C00G1811	
Tufted construction	Multi-level Pattern loop pile	Multi-level Pattern loop pile	
Fiber	PRO-CARE Fiber Nylon	PRO-CARE Fiber Nylon	
Dye method	100% Solution Dyed	100% Solution Dyed	
Tufted weight (oz/yd ²)	17.0	18.0	
Pile height (mm)	4.0 ± 0.5	4.0 ± 0.5	
Total height (mm)	6.5 ± 0.5	6.5 ± 0.5	
Tile size (mm)	500 x 500	500 x 500	
Standard backing	PRO-CARE Backing	PRO-CARE Backing	
Stain resist protection	PRO-CARE Self+ guard	PRO-CARE Self+ guard	
*Anti-microbial	*PRO-CARE Ag+ guard	*PRO-CARE Ag+ guard	
Apperance Retention Rating	Heavy Use	Heavy Use	QB/T 2755-2005
Flammability	Class B1	Class B1	QB 8624-2012
Indoor air quality	TVOC A grade≤0.500mg/m ² h	TVOC A grade≤0.500mg/m ² h	QB 18587-2001
	CRI GREEN LABEL PLUS	CRI GREEN LABEL PLUS	

RECOMMENDED INSTALLATION METHODS

Staglag - Svira

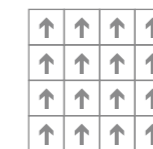


Brick

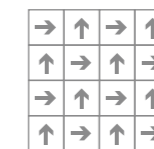


Quarter-Turn

Staglag - Tilson



Monolithic



Quarter-Turn

