

Inspiring Great Spaces™



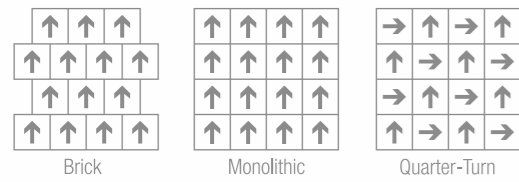
Inspiring Great Spaces™



Specification

Product name	Jumper
Product code	C00L0811
Tufted construction	Multi-level Pattern loop pile
Fiber	PRO-CARE Fiber Nylon
Dye method	100% Solution Dyed
Tufted weight(oz/yd <sup>2</sup> )	19.0
Pile height(mm)	4.5±0.5
Total height(mm)	7.5±0.5
Tile size(mm)	500×500
Standard backing	PRO-CARE Backing
Stain resist protection	PRO-CARE Self* guard
*Anti-microbial	*PRO-CARE Ag* guard
Appearance retention rating	Heavy Use
Flammability	Class B1
Indoor air quality	TVOC A grade ≤0.500mg/m <sup>3</sup> h CRI GREEN LABEL PLUS

Recommended installation methods



www.armstrongflooring.asia  
ARMSTRONG FLOORING OFFICES:

	TEL:	FAX:
Hong Kong	(852)2585 7800	(852)2598 7181
Singapore	(65)6604 6836	(65)6604 6835
Malaysia	(60)379 323 331	(60)379 606 331
Indonesia	(62)21 2965 7866	(62)21 2965 7867

All trademarks owned by AWI Licensing Company



H-CSF-Jumper-0318-PRC Printed in China

The above information is for reference purpose only. We shall have the right to make changes to the above details and information. We reserve the rights of final interpretation of the above information. All copyright is reserved, and any infringement will be pursued.





## PROFESSIONAL ADVANTAGES



### PRO-CARE Fiber

Best collection of solution dyed nylon fiber within top international brands

Rich in color and easy to clean, It's colorfast with high color fastness

Advanced protective and antistatic treatment, which ensure the excellent performance and strong wear resistance of each fiber

### \*PRO-CARE Ag+guard

Using the most advanced Ag<sup>+</sup> silver ion which continuously inhibits bacterial component, resulting in the lasting and effective inhibition of various bacteria breeding

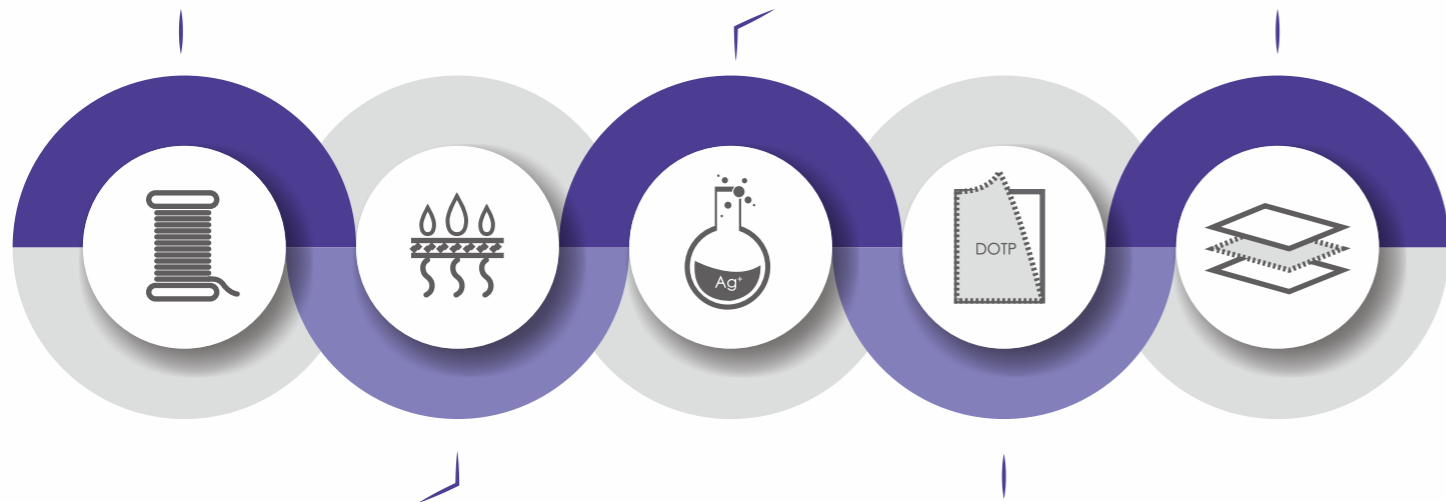
It does not contain cyanide poison and is safe and harmless to users and environment

### PRO-CARE Sticker

Nontoxic and environmentally friendly transparent adhesive sticker

Efficient, convenient, time-saving and economical new installation method without glue

Applicable to all of carpet installation methods



### PRO-CARE Self+guard

Carpet surface treatment from three dimensions (waterproof, anti-oil, antifouling) for each tile

The protection factors continue its penetration process, and the environmental safety formula does not contain PFOA, PFOS and other toxic harmful ingredients

The comprehensive protection, much more convenient for daily, and easier for daily cleaning

### PRO-CARE Backing

The whole product line uses the unique Pro-care backing with no "ortho-benzene plasticizer" so that the toxic substances will not be released

In line with the latest EU regulation, "benzene based plasticizers" have been adopted to make our products much safer and less toxic for both environment and users

Dense glass fiber layer is added on the backing to enhance the stability and durability of carpet tiles

This city of the future has no boundary between day and night, with curtains of glass outlining the eternal skyline. Skyscrapers grow like the jungle, fighting to reach the heavens. Below, the subway stretches its roots, whistling as it passes as if it possesses the vitality of life. Vertically and horizontally the soul of the city is elevated, constantly driving towards the place of dreams. The hurried passers-by have all morphed into a singular grey figure, the strange crowd hides unknowns. Love the future... as it brings infinite possibilities.



## JUMPER

design  
in  
motion









JUMPER COOL0811-01 Dark Night / COOL0811-08 Amber Gold



JUMPER COOL0811-09 Platinum Bold



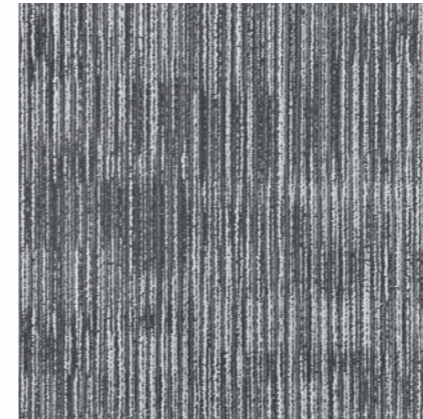




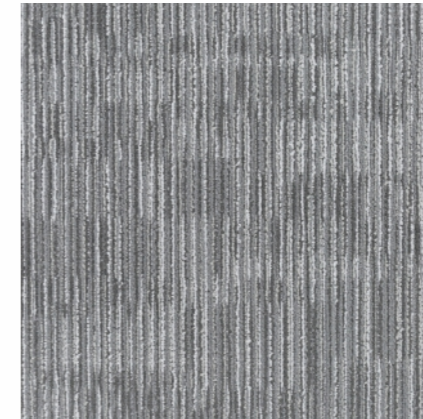


# JUMPER

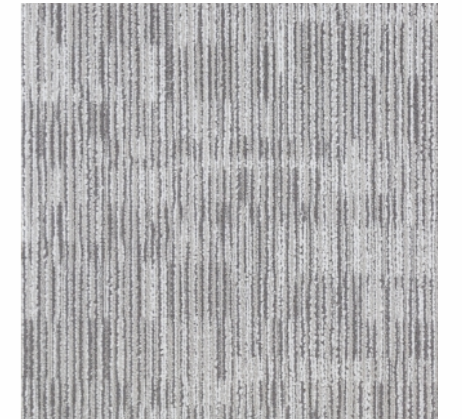
**Armstrong**  
FLOORING



C00L0811-01 Dark Night



C00L0811-02 Seagull Ash



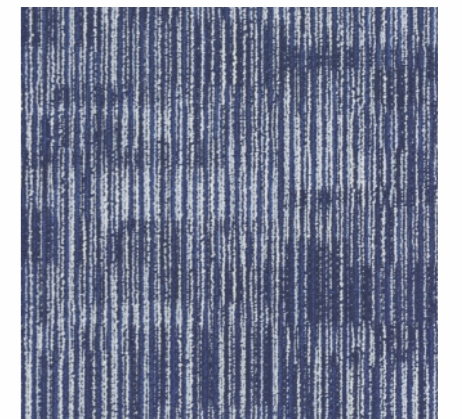
C00L0811-03 Moon Silver



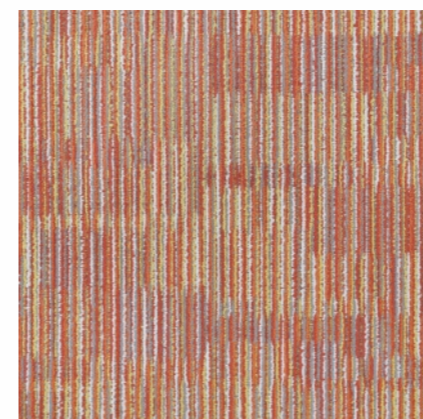
C00L0811-04 Sea Green



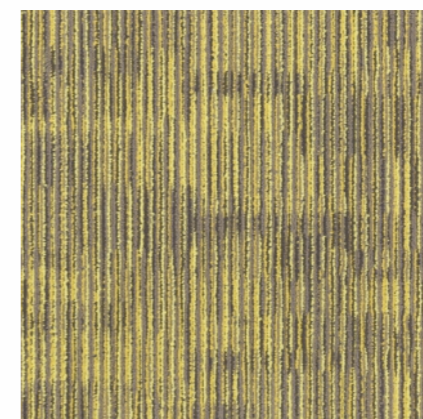
C00L0811-05 Pearl Green



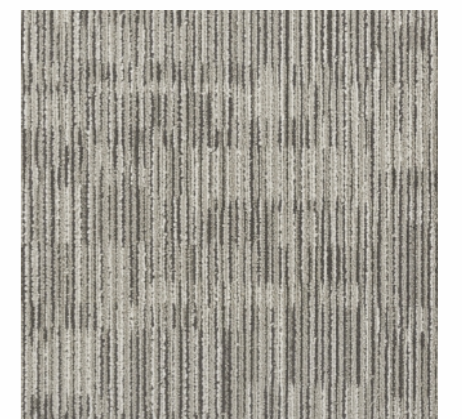
C00L0811-06 Aurora Blue



C00L0811-07 Magic Rainbow



C00L0811-08 Amber Gold



C00L0811-09 Platinum Gold