

Armstrong[®]
FLOORING

CITYBEAT[™]







C00D0821-02

Spruce



C00D0821-03

Birch



C00D0821-04

Holly



C00D0821-05

Palm



C00D0821-06

Camphor



C00D0821-07

Larch



C00D0821-08

Oak



C00D0821-09

Paulownia



C00D0821-10

Chinese parasol

Inspiring Great Spaces™



C00D0821-02 Spruce



C00D0821-01 Cypress

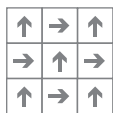


C00D0821-09 Paulownia

Recommended installation methods



Monolithic



Quarter-Turn

Technical Data

Product Specification	Description	Tolerance
Construction	Multi-level Loop	-
Yarn type	Nylon6.6	-
Dye Method	100% Solution Dyed	-
Gauge (/inch)	1/12	-
Yarn Weight (oz/yd ²)	22	±5%
Average Pile Thickness (mm)	4.5	±0.5
Total Thickness (mm)	7.5	±0.5
Product Size (mm)	500*500	±0.1%

www.armstrongflooring.asia

ARMSTRONG FLOORING OFFICES:

	TEL:	FAX:
Hong Kong	(852)2585 7800	(852)2598 7181
Singapore	(65)6604 6836	(65)6604 6835
Malaysia	(60)379 323 331	(60)379 606 331
Indonesia	(62)21 2965 7866	(62)21 2965 7867

All trademarks owned by AWI Licensing Company



G-CSF-Citybeat-1017-PRC Printed in China