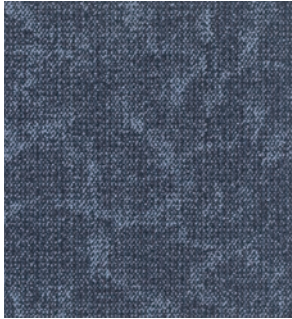
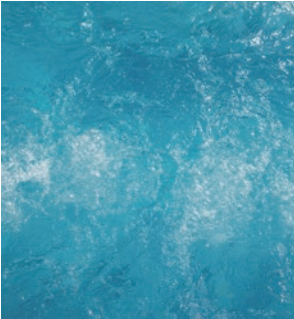
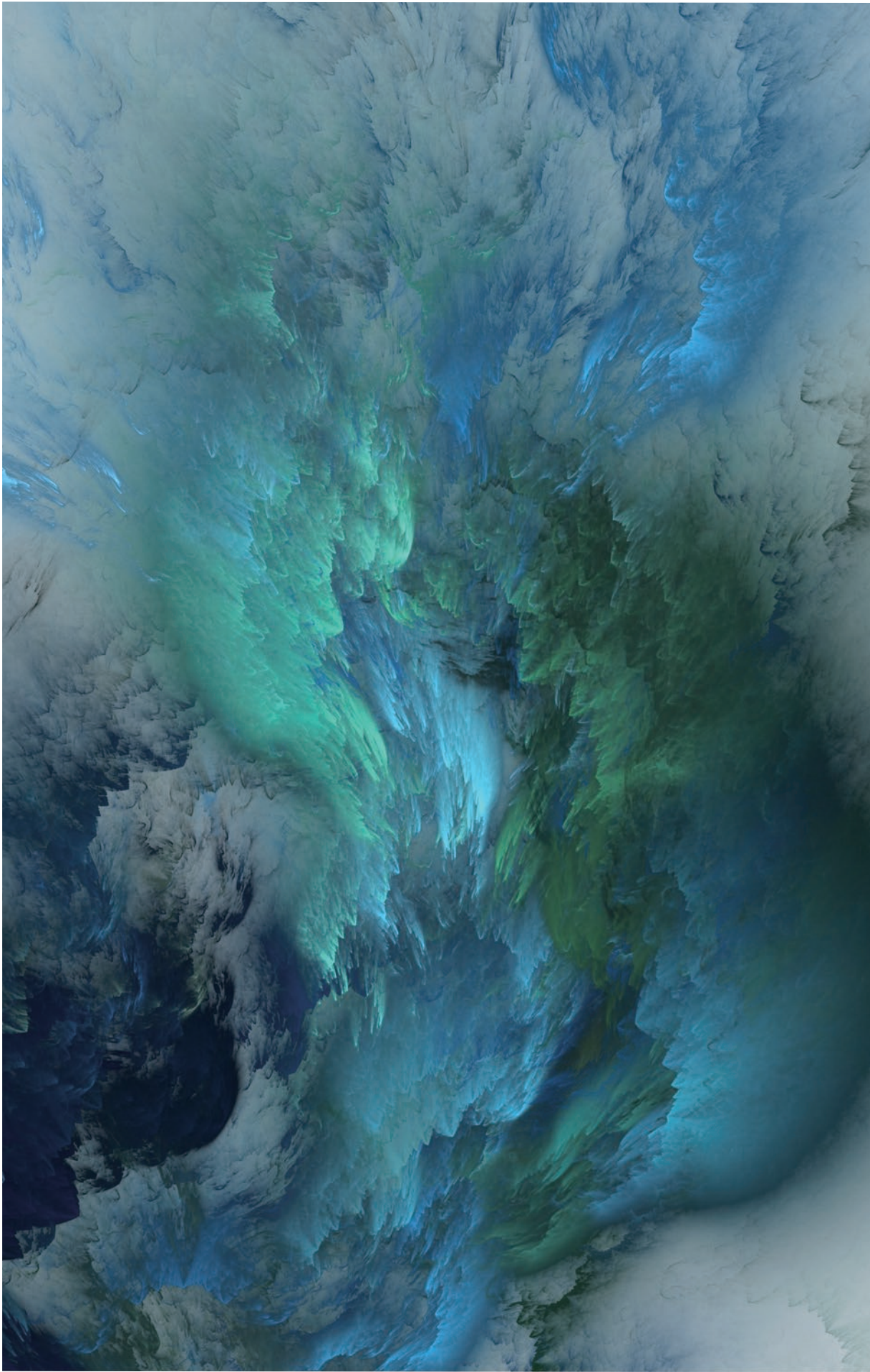
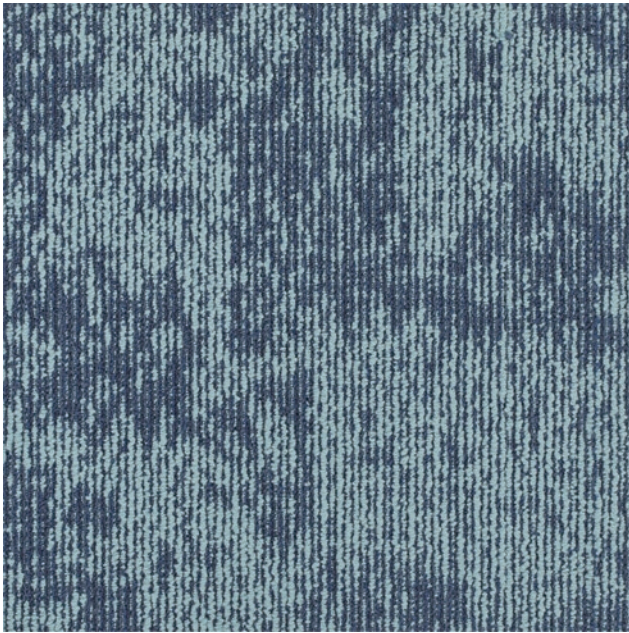


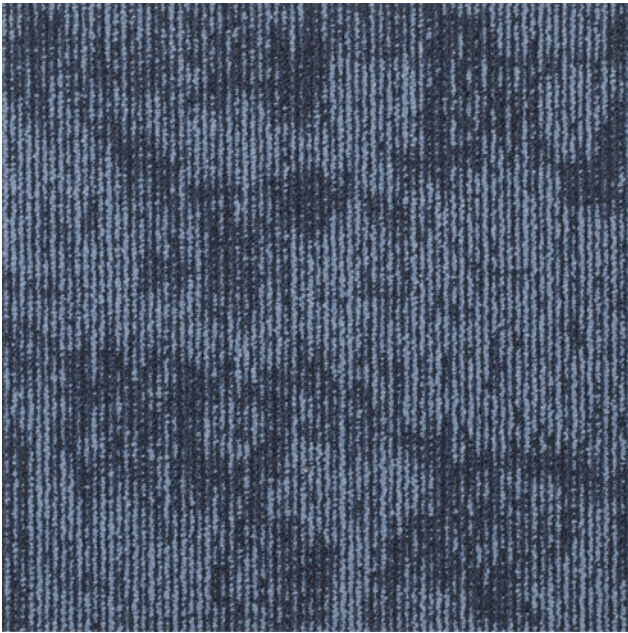
Armstrong®
FLOORING

PAISAJE™

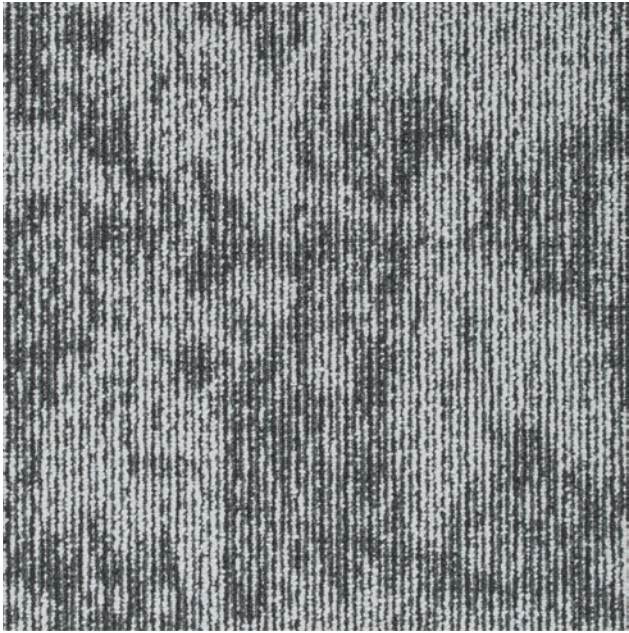




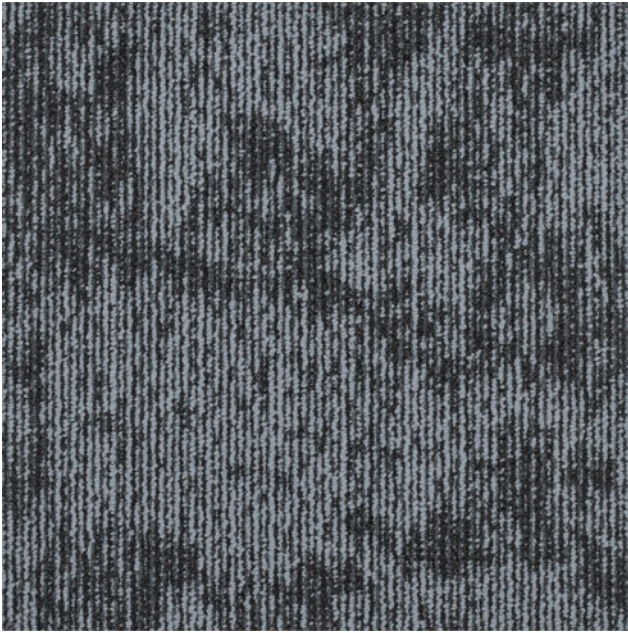
Paisaje—Utoco C00C0811-01 Peaceful



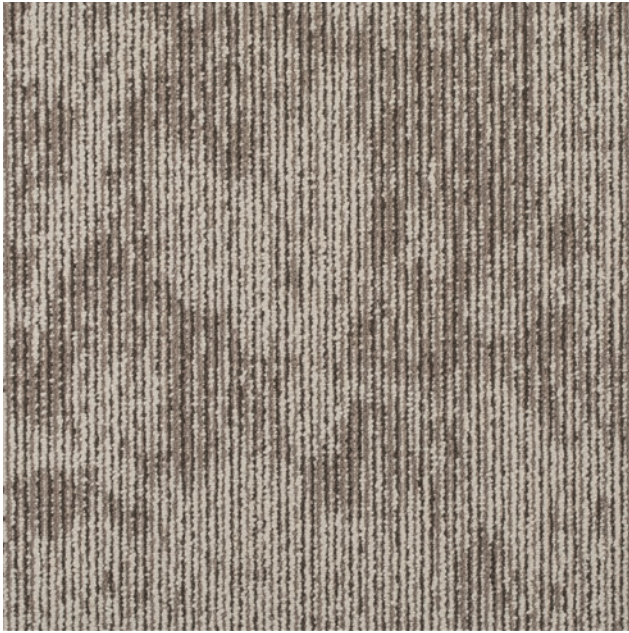
Paisaje—Utoco C00C0811-02 Sea Blue



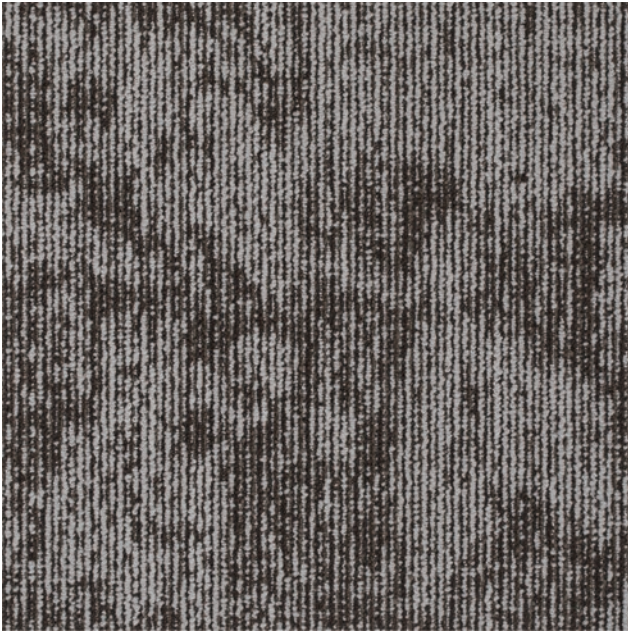
Paisaje—Utoco C00C0811-03 Gently Grey



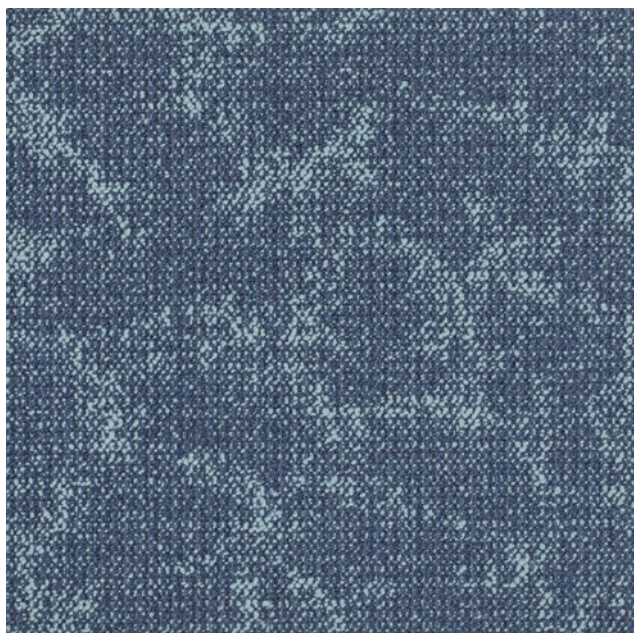
Paisaje—Utoco C00C0811-04 Plow Rock



Paisaje—Utoco C00C0811-05 Light Coir

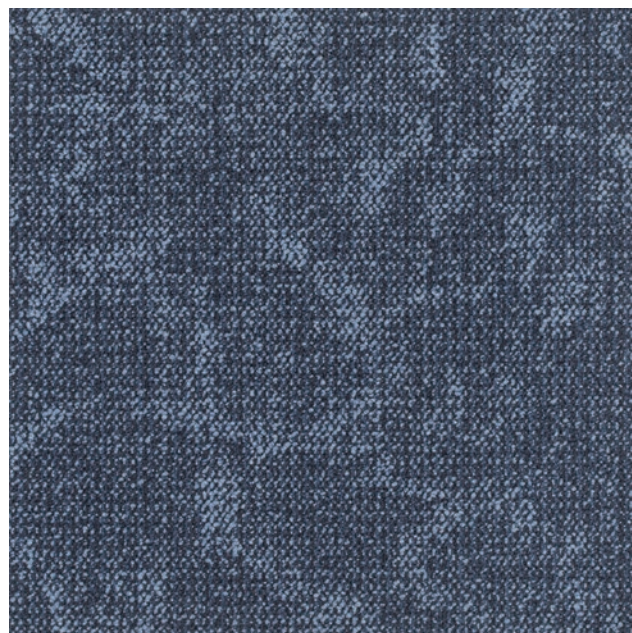


Paisaje—Utoco C00C0811-06 Khaki



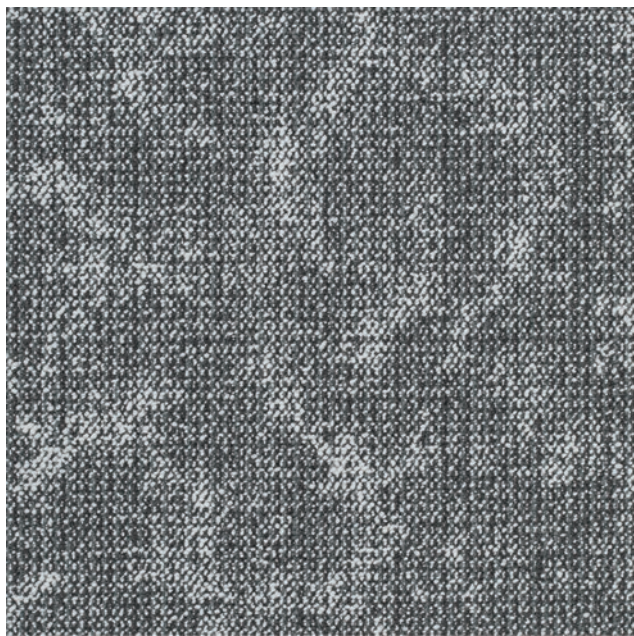
Paisaje—Brickans

C00C1811—01 Peaceful



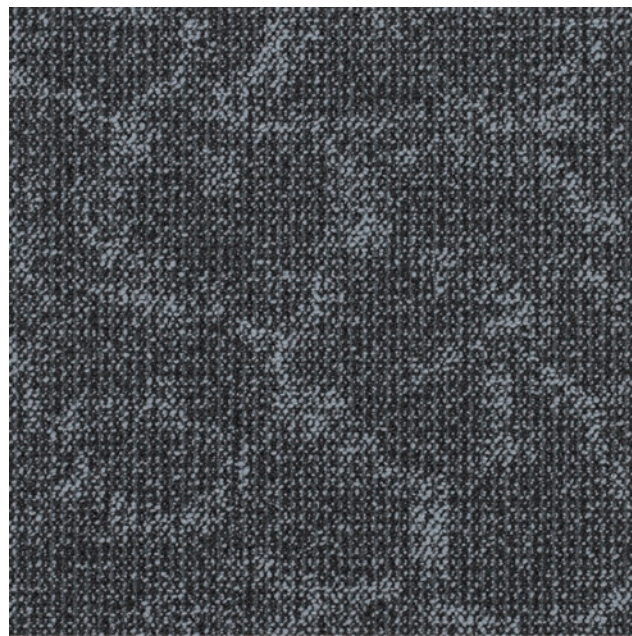
Paisaje—Brickans

C00C1811—02 Sea Blue



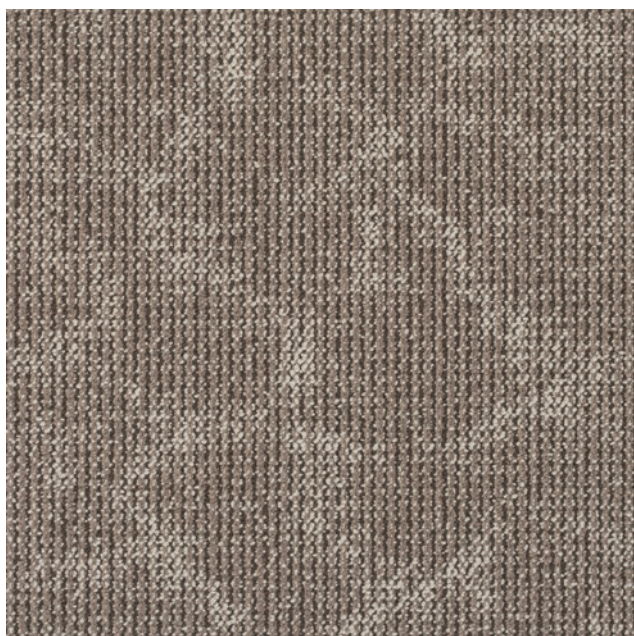
Paisaje—Brickans

C00C1811—03 Gently Grey



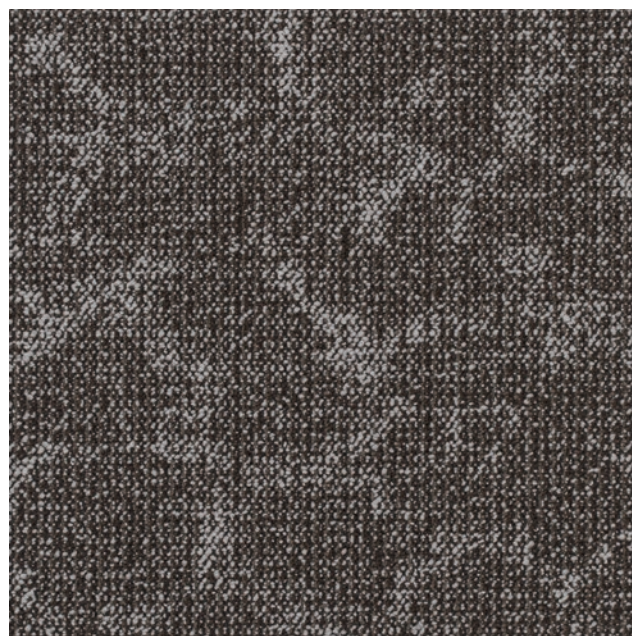
Paisaje—Brickans

C00C1811—04 Plow Rock



Paisaje—Brickans

C00C1811—05 Light Coir



Paisaje—Brickans

C00C1811—06 Khaki



Paisaje-Utoco C00C0811-04 Plow Rock



Paisaje-Brickans C00C1811-06 Khaki



Paisaje-Brickans C00C1811-04 Plow Rock

Recommended installation methods		Technical Data		Utoco	Brickans
		Product Specification	Description	Description	Tolerance
<div><div>↑↑↑</div><div>↑↑↑</div><div>↑↑↑</div></div>	<div><div>↑→↑</div><div>→↑→</div><div>↑→↑</div></div>	Construction	Multi-level Loop	Multi-level Loop	—
		Yarn type	Nylon6	Nylon6	—
		Dye Method	100% Solution Dyed	100% Solution Dyed	—
		Gauge (/inch)	1/12	1/12	—
		Yarn Weight (oz/yd ²)	20	18	±5%
		Average Pile Thickness (mm)	4	3.5	±0.5
		Total Thickness (mm)	6.5	6.5	±0.5
		Product Size (mm)	500*500	500*500	±0.1%