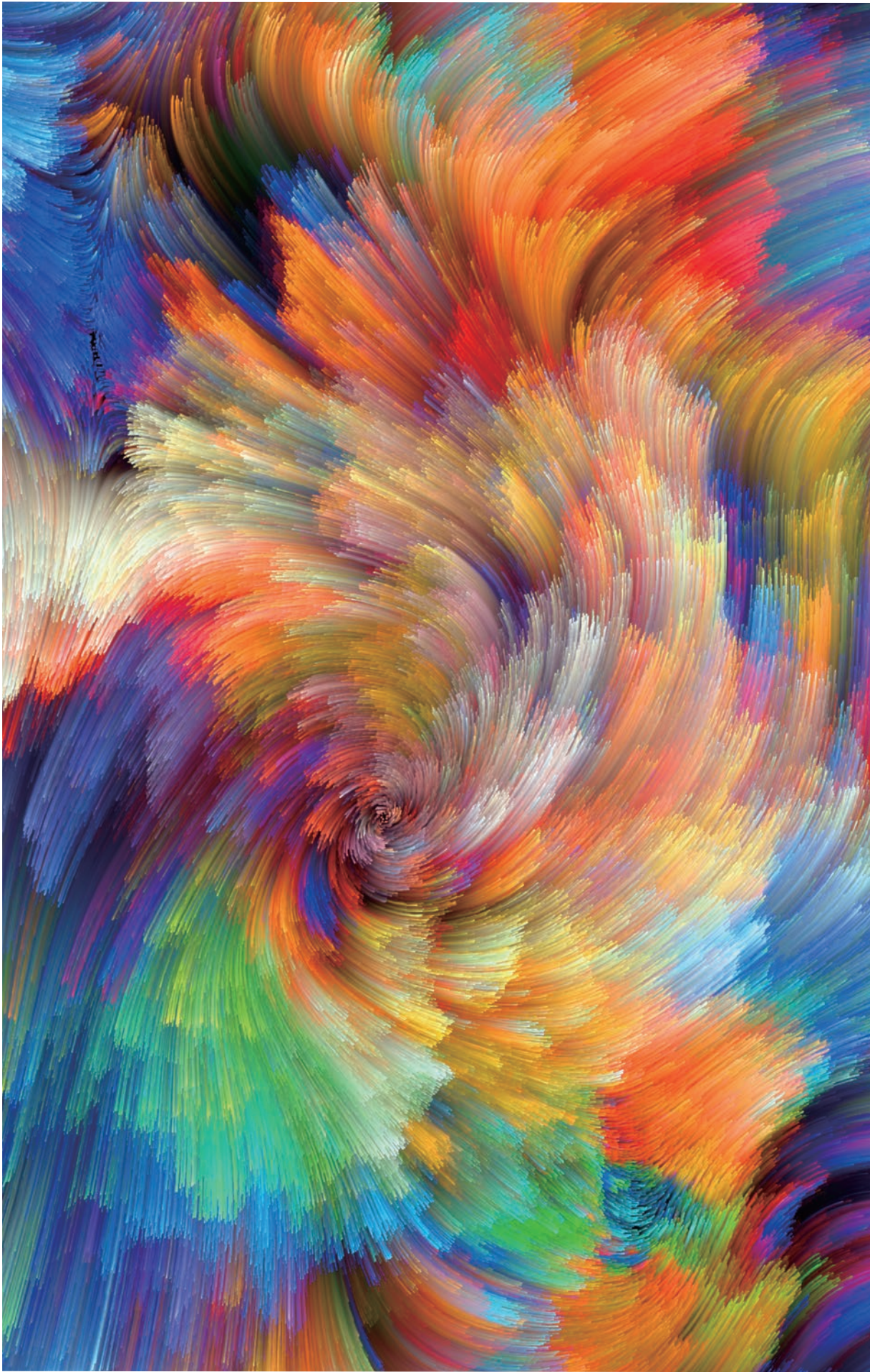
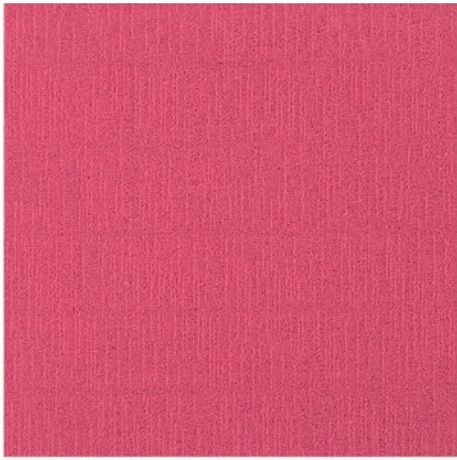


Armstrong[®]
FLOORING

SATIE[™]

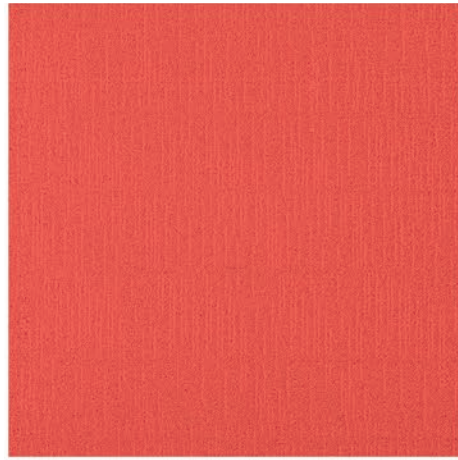






C00B0811-01

Flamingo



C00B0811-02

Tangerine



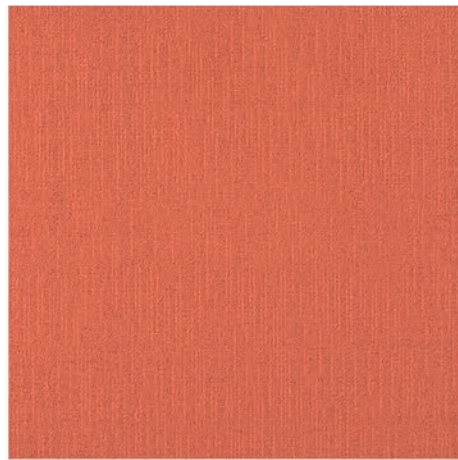
C00B0811-03

Maroon



C00B0811-04

Coral



C00B0811-05

Zaffron



C00B0811-06

Sand Light



C00B0811-07

Golden Sun



C00B0811-08

Gold Leaf



C00B0811-09

Vegetation



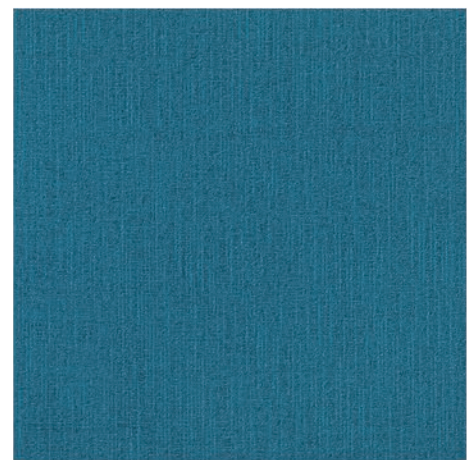
C00B0811-10

Forest Green



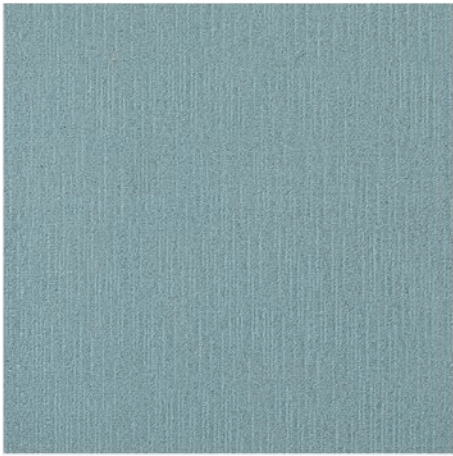
C00B0811-11

Promise Green



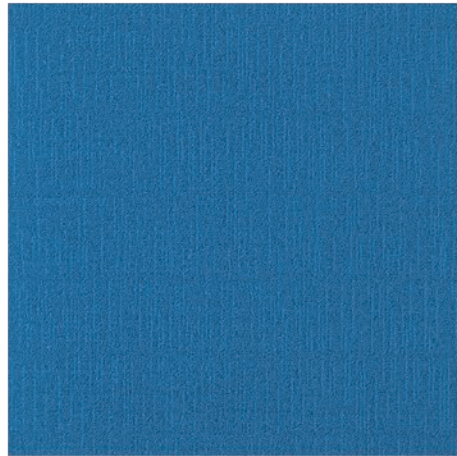
C00B0811-12

Lagoon Blue



C00B0811-13

Sky Blue



C00B0811-14

Cornflower Blue



C00B0811-15

Indigo Mid



C00B0811-16

Hydrangea



C00B0811-17

Regatta



C00B0811-18

Ocean Blue



C00B0811-19

Perfectly Plum



C00B0811-20

Natrual White



C00B0811-21

Sand Yellow



C00B0811-22

Natrual



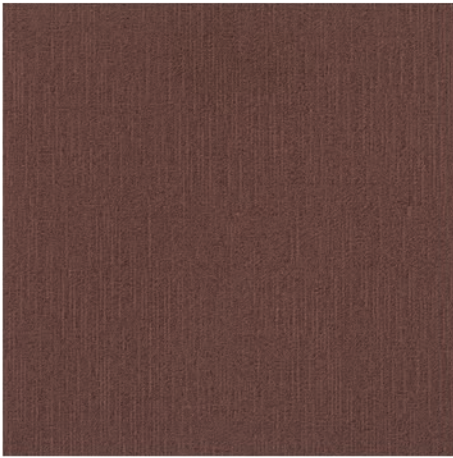
C00B0811-23

Powder Chocolate



C00B0811-24

Sand Mid



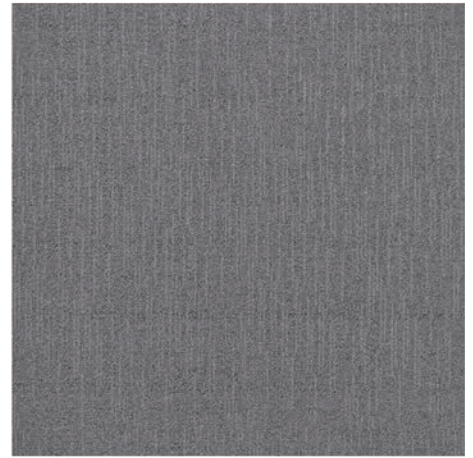
C00B0811-25

Milk Chocolate



C00B0811-26

Walnut



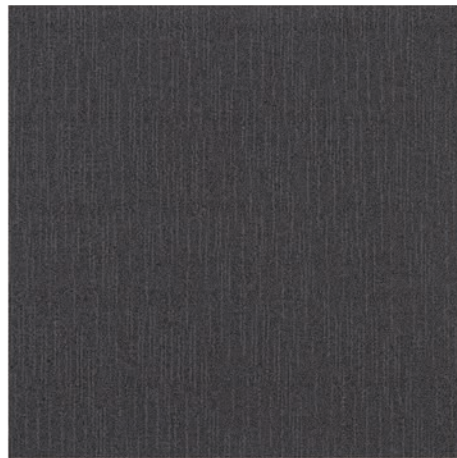
C00B0811-27

Rock Dust Light



C00B0811-28

Rock Dust Mid



C00B0811-29

Hazel



C00B0811-30

Natural Tone



C00B0811-31

Natural Grey



C00B0811-32

Grey Dark



C00B0811-33

Grey Light



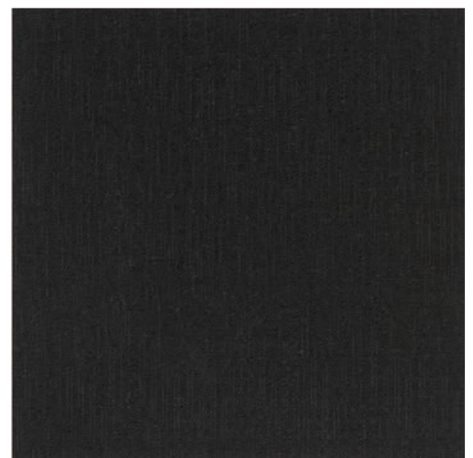
C00B0811-34

Deep Grey



C00B0811-35

Slate Grey



C00B0811-36

Almost Black

Inspiring Great Spaces™

Armstrong®
FLOORING



C00B0811-02 Tangerine

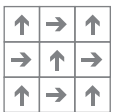


C00B0811-09 Vegetation

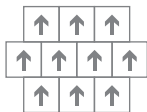


C00B0811-13 Sky Blue

Recommended installation methods



Quarter-Turn



Brick

Technical Data

Product Specification	Description	Tolerance
Construction	Multi-level Loop	—
Yarn type	Nylon6	—
Dye Method	100% Solution Dyed	—
Gauge (/inch)	1/12	—
Yarn Weight (oz/yd ²)	16	±5%
Average Pile Thickness (mm)	3.5	±0.5
Total Thickness (mm)	6	±0.5
Product Size (mm)	500*500	±0.1%

www.armstrongflooring.asia

ARMSTRONG FLOORING OFFICES:

	TEL:	FAX:
Hong Kong	(852)2585 7800	(852)2598 7181
Singapore	(65)6604 6836	(65)6604 6835
Malaysia	(60)379 323 331	(60)379 606 331
Indonesia	(62)21 2965 7866	(62)21 2965 7867

All trademarks owned by AWI Licensing Company



G-CSF-Satie-1017-PRC Printed in China