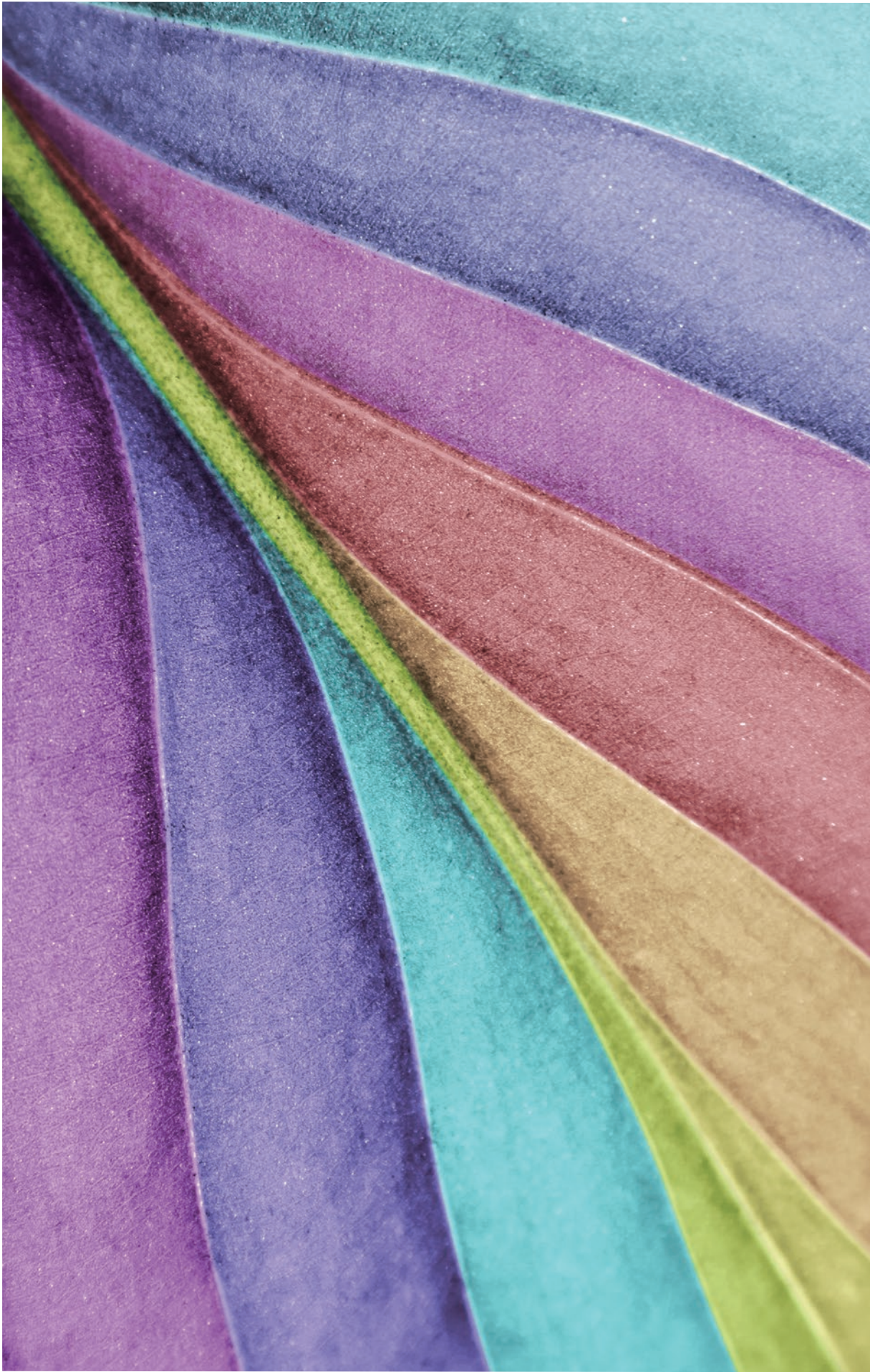


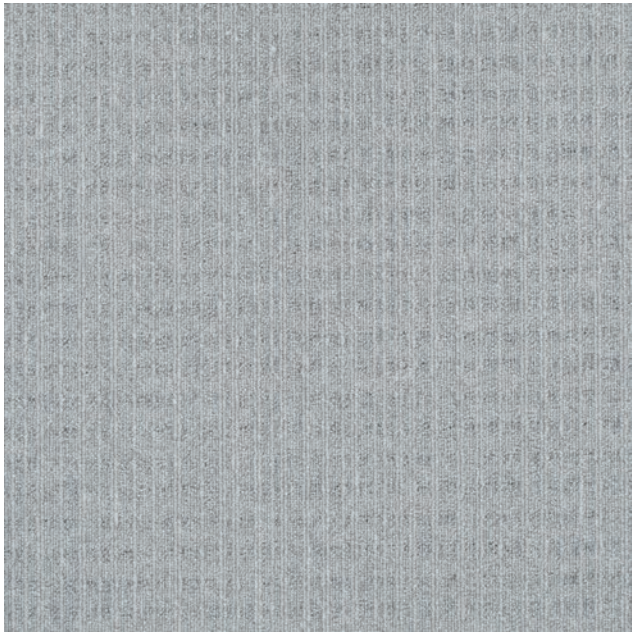
Armstrong[®]
FLOORING

BRIMNES[™]



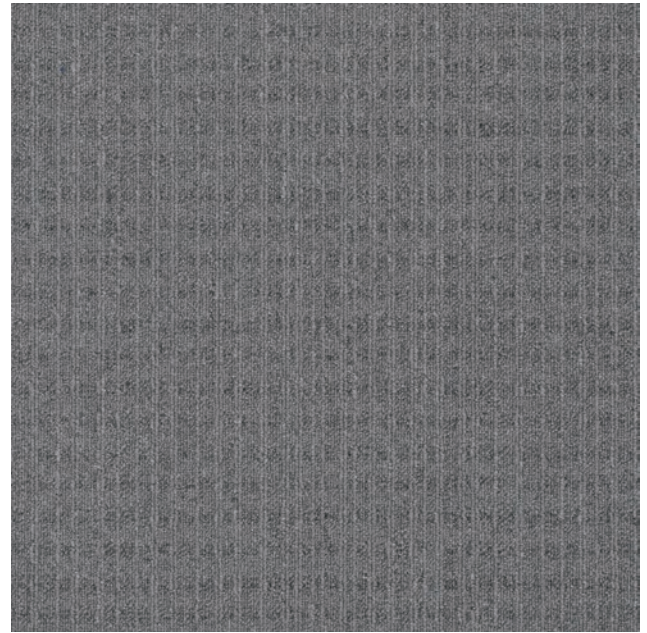






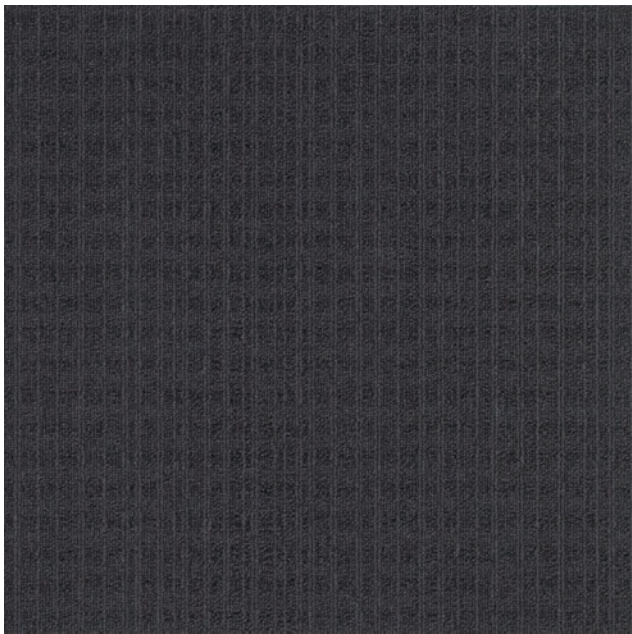
C00A0811-07

Moon Grey



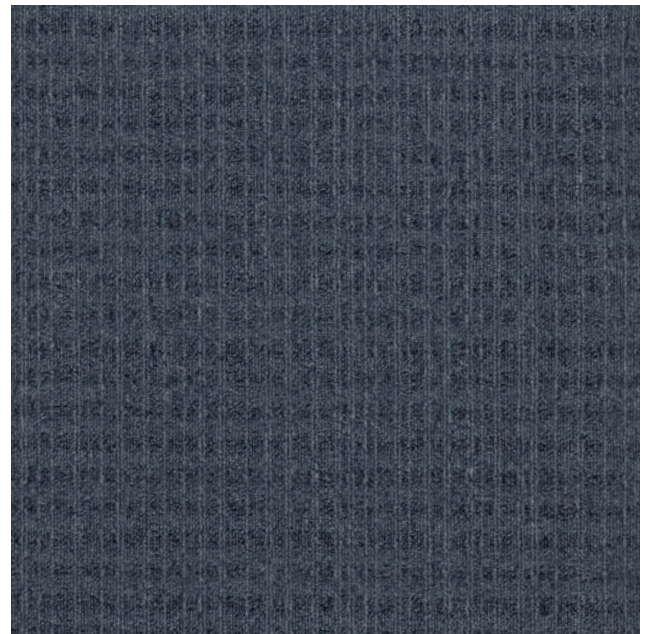
C00A0811-08

Style Grey



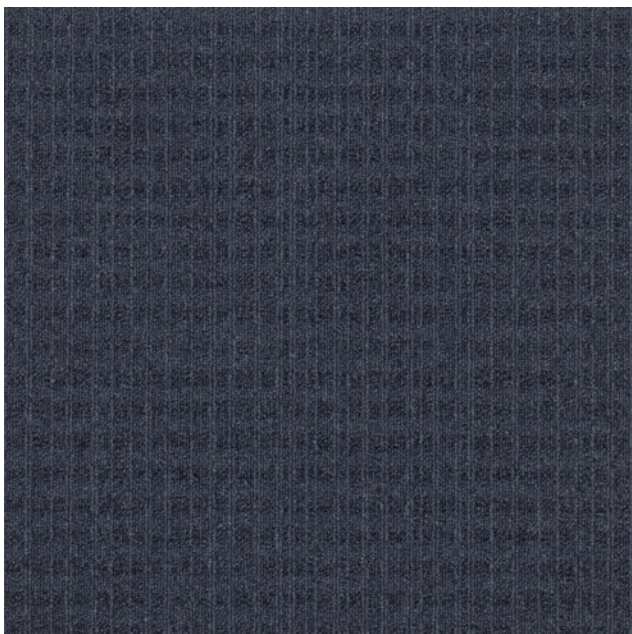
C00A0811-09

Lavie Black



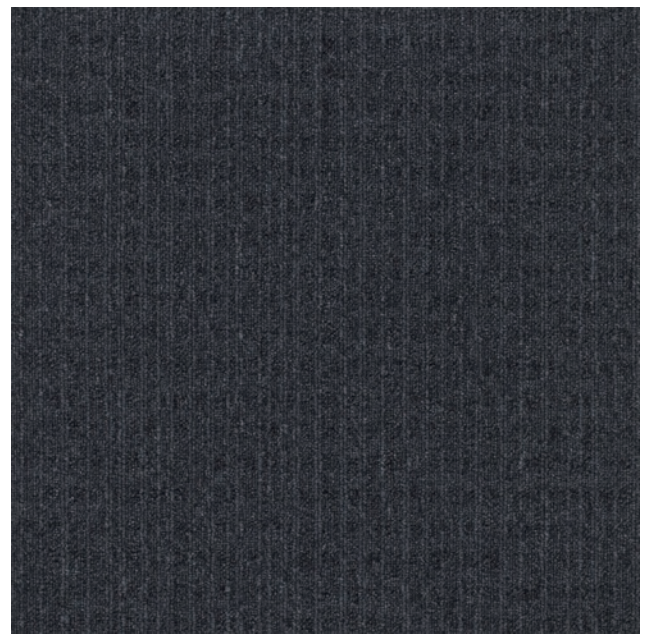
C00A0811-10

Wind Blue



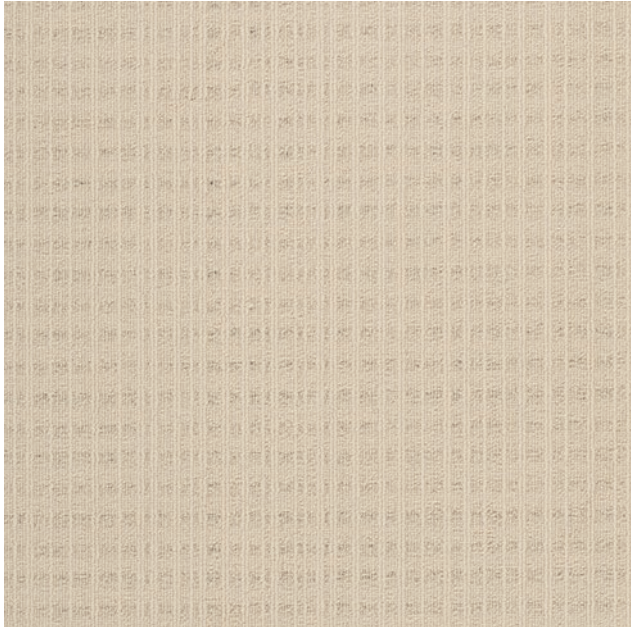
C00A0811-11

Ink Blue



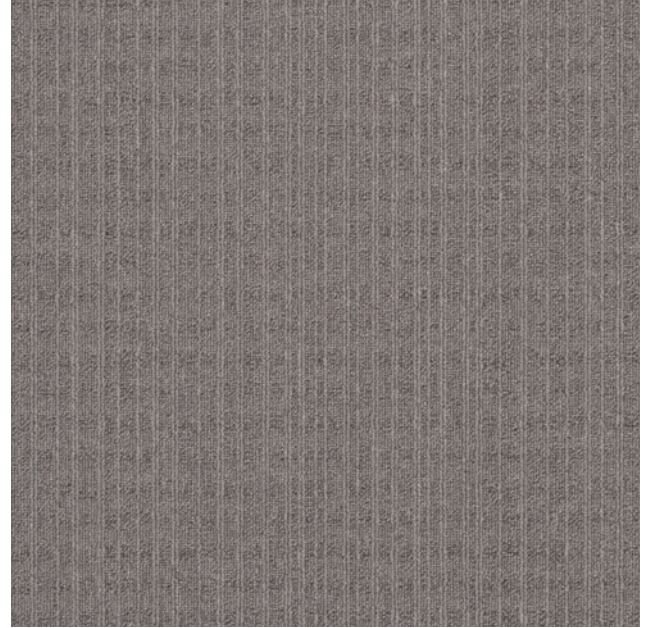
C00A0811-12

Sapphire



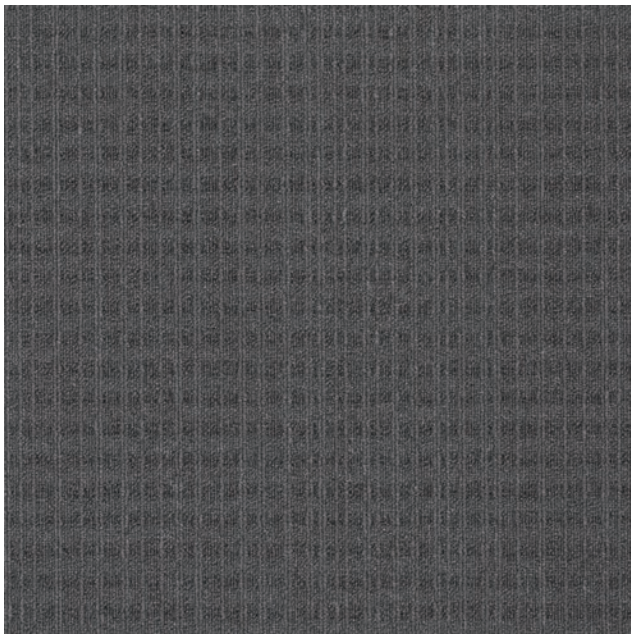
C00A0811-01

Boston Yellow



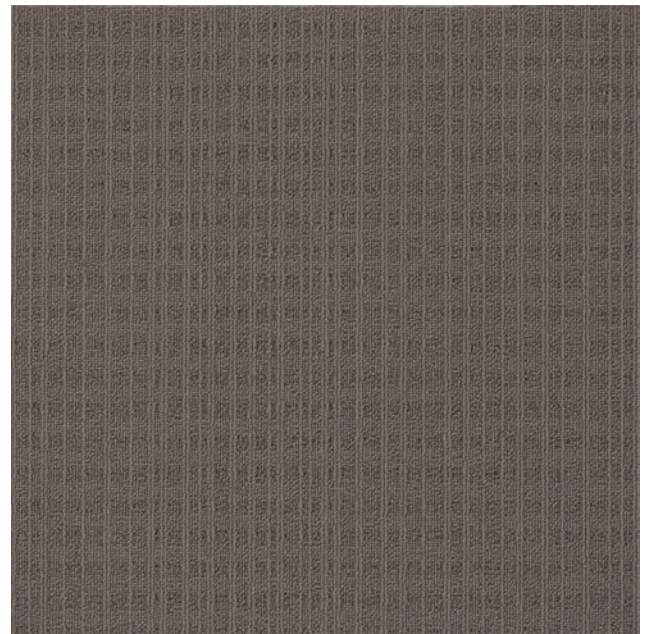
C00A0811-02

Amazon Grey



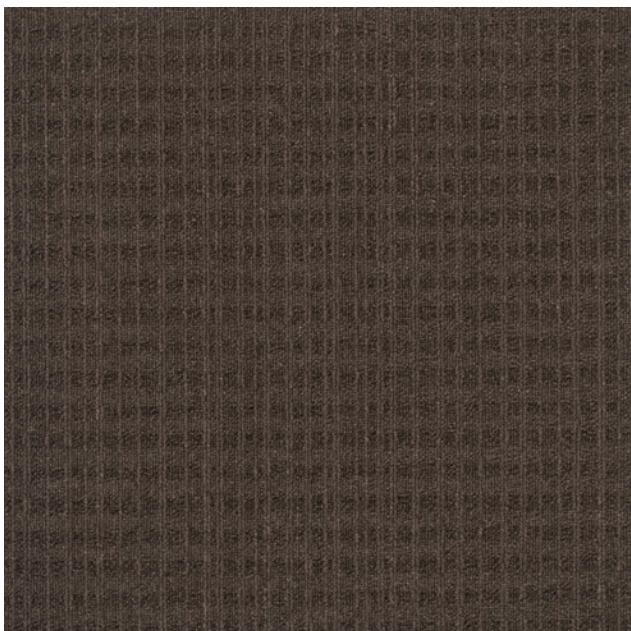
C00A0811-03

Midnight Grey



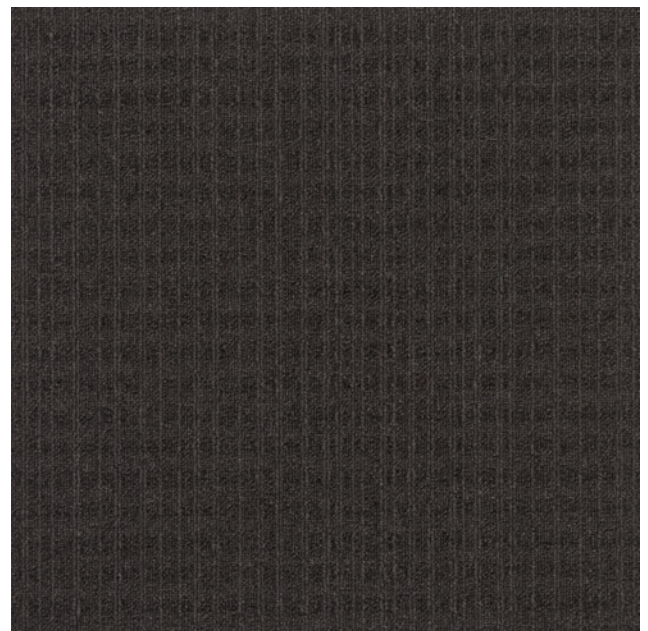
C00A0811-04

Toffee Brown



C00A0811-05

Moca Brown



C00A0811-06

Mandolin Grey

Inspiring Great Spaces™



C00A0811-05 Moca Brown

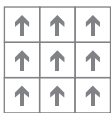


C00A0811-12 Sapphire

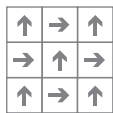


C00A0811-10 Wind Blue

Recommended installation methods



Monolithic



Quarter-Turn

Technical Data

Product Specification	Description	Tolerance
Construction	Multi-level Loop	-
Yarn type	Nylon6	-
Dye Method	100% Solution Dyed	-
Gauge (/inch)	1/10	-
Yarn Weight (oz/yd ²)	22	±5%
Average Pile Thickness (mm)	4.5	±0.5
Total Thickness (mm)	7	±0.5
Product Size (mm)	500*500	±0.1%

www.armstrongflooring.asia

ARMSTRONG FLOORING OFFICES:

	TEL:	FAX:
Hong Kong	(852)2585 7800	(852)2598 7181
Singapore	(65)6604 6836	(65)6604 6835
Malaysia	(60)379 323 331	(60)379 606 331
Indonesia	(62)21 2965 7866	(62)21 2965 7867

All trademarks owned by AWI Licensing Company



G-CSF-Brimmes-1017-PRC Printed in China