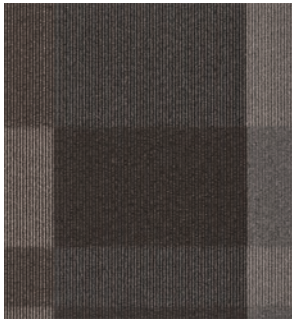
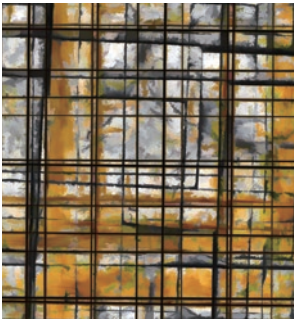
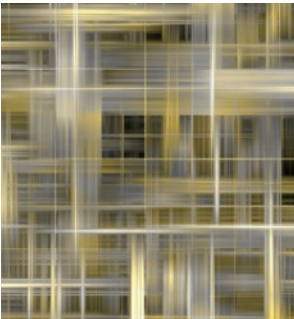
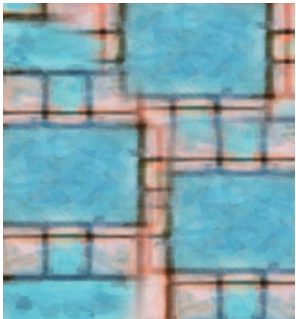
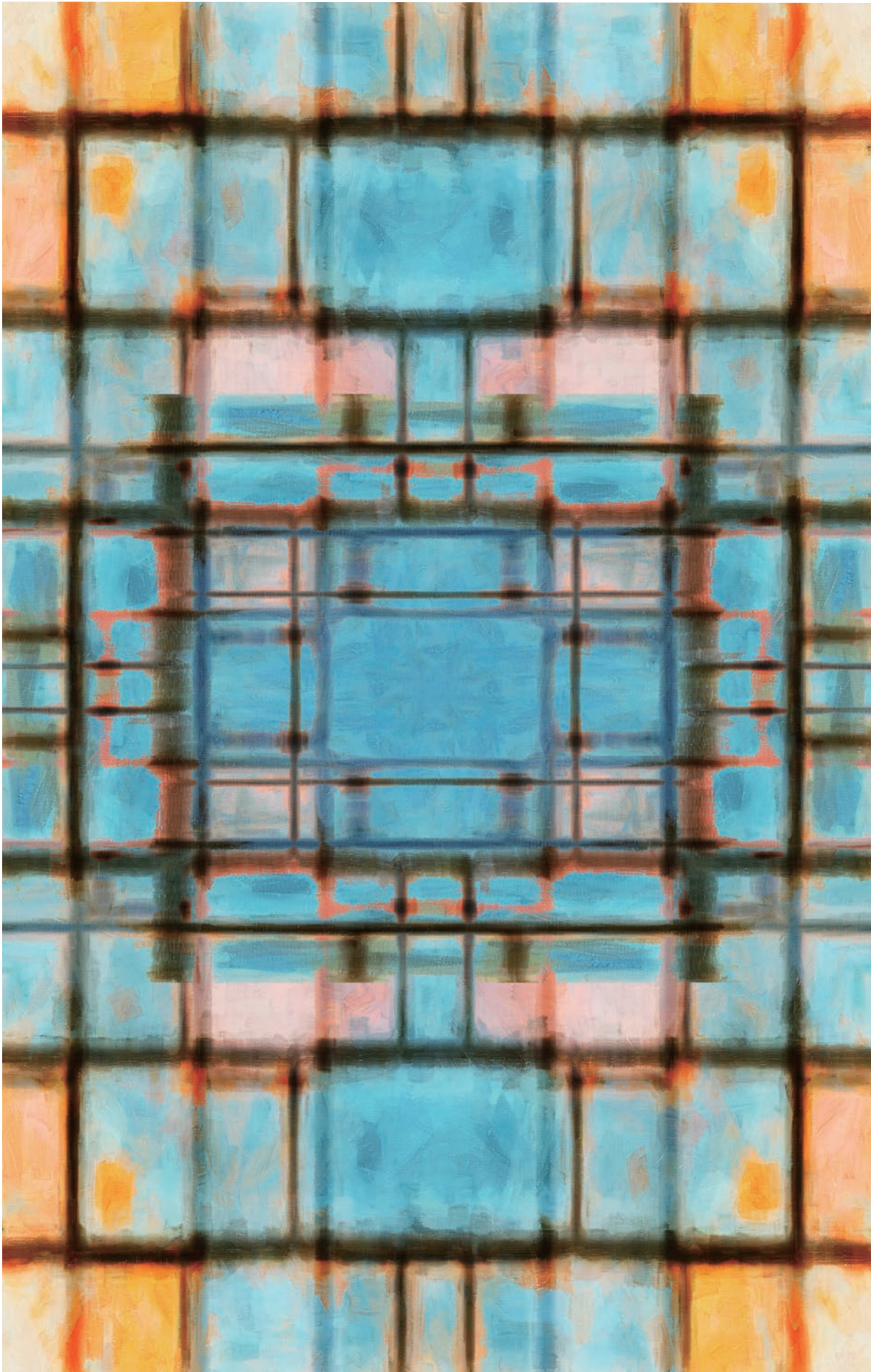
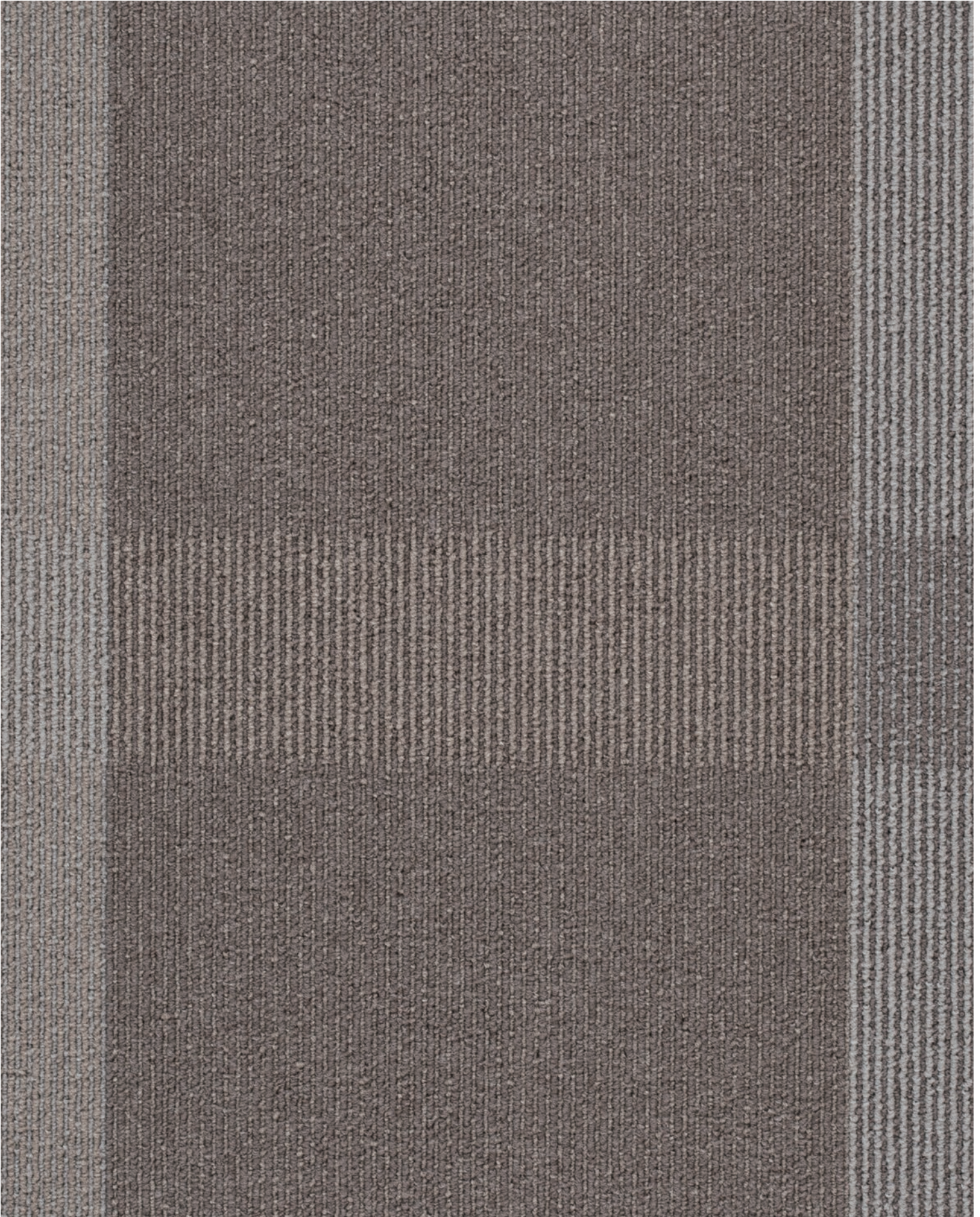


**Armstrong**<sup>®</sup>  
FLOORING

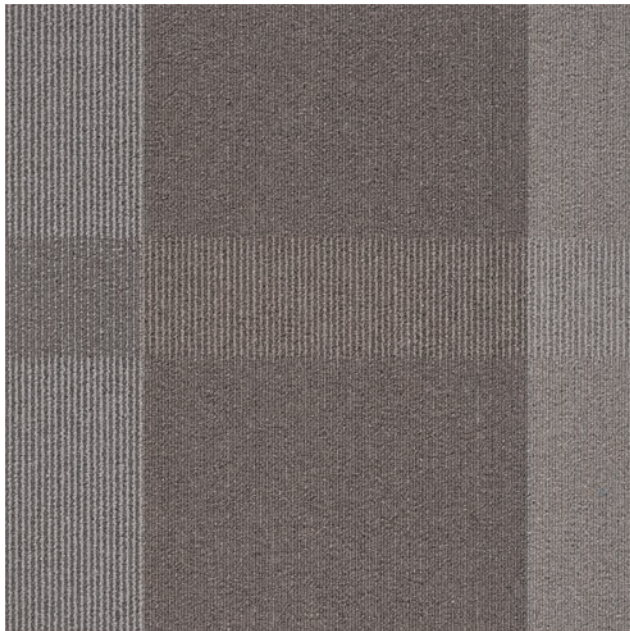
OPRELAND<sup>™</sup>





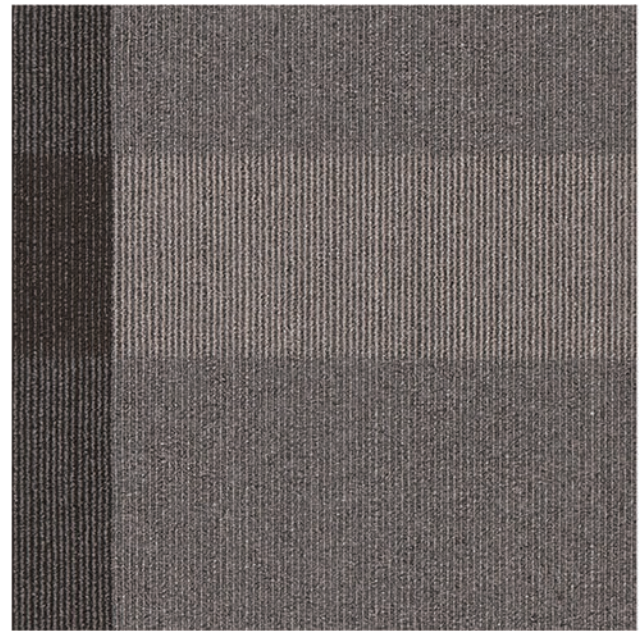
C00H0811-01

Lush



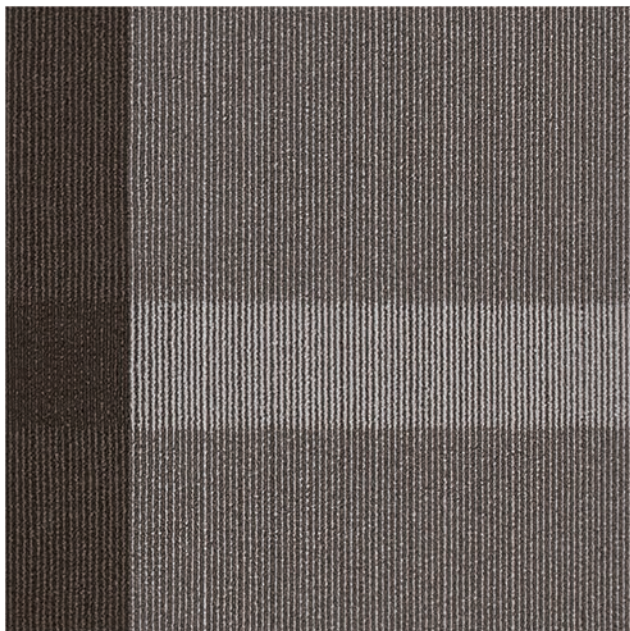
C00H0811-01

Lush



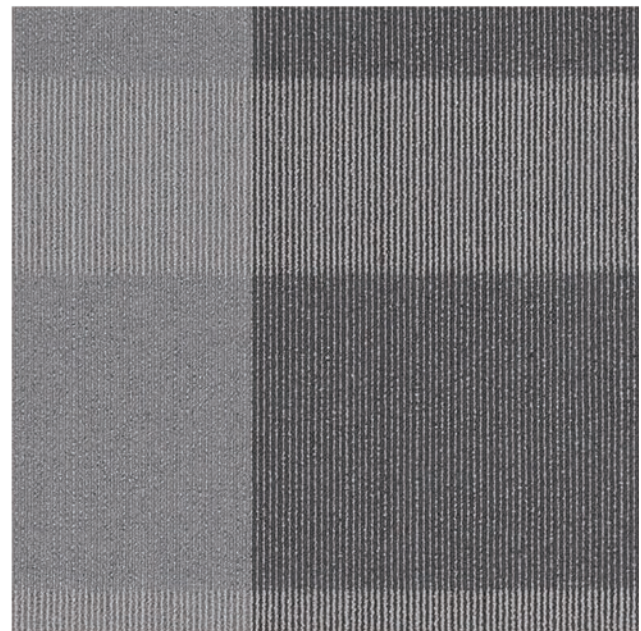
C00H0811-02

Moca



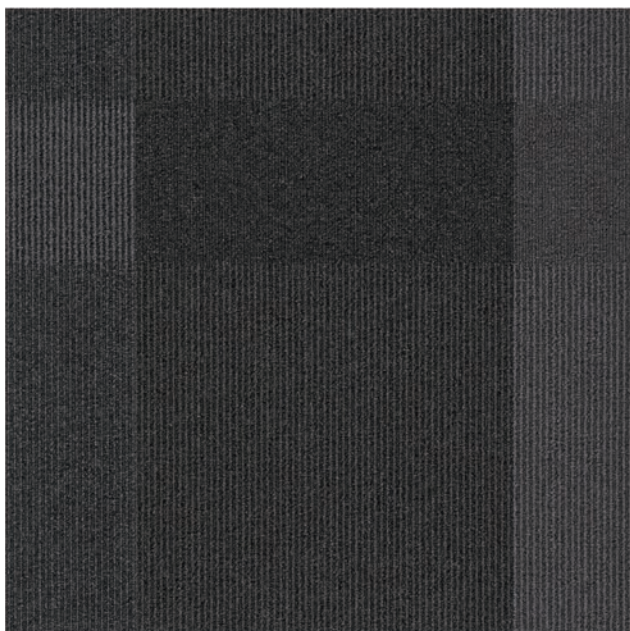
C00H0811-03

Hoary



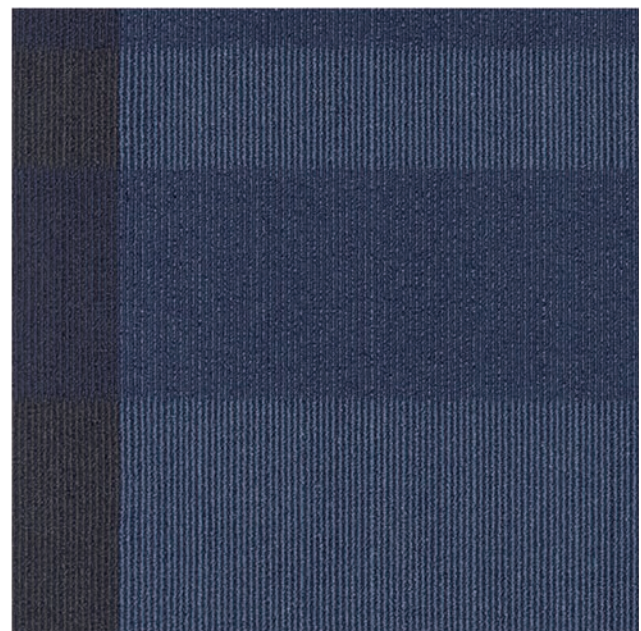
C00H0811-04

Abra



C00H0811-05

Loch



C00H0811-06

Star

Inspiring Great Spaces™



C00H0811-04 Abra

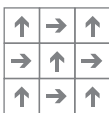


C00H0811-02 Moca



C00H0811-01 Lush

Recommended installation methods



Quarter-Turn

Technical Data

Product Specification	Description	Tolerance
Construction	Multi-level Loop	-
Yarn type	Nylon6	-
Dye Method	100% Solution Dyed	-
Gauge (/inch)	1/10	-
Yarn Weight (oz/yd <sup>2</sup> )	16	±5%
Average Pile Thickness (mm)	3.5	±0.5
Total Thickness (mm)	6	±0.5
Product Size (mm)	500*500	±0.1%

www.armstrongflooring.asia

ARMSTRONG FLOORING OFFICES:

	TEL:	FAX:
Hong Kong	(852)2585 7800	(852)2598 7181
Singapore	(65)6604 6836	(65)6604 6835
Malaysia	(60)379 323 331	(60)379 606 331
Indonesia	(62)21 2965 7866	(62)21 2965 7867

All trademarks owned by AWI Licensing Company



G-CSF-Opreland-1017-PRC Printed in China