

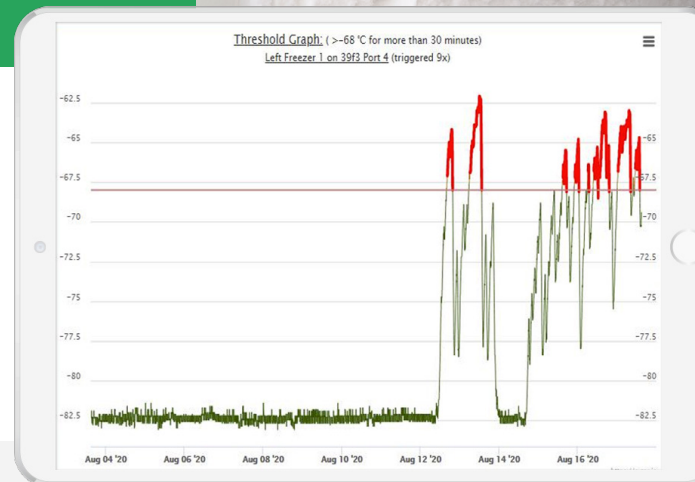
# Lab Temperature Monitoring Made The Way You Need It — Simple & Effective

Lab freezer and refrigerator failures can happen at any time, and when they do, there is little time to move specimens before they are compromised. The cloud-based 24-hour temperature monitor from CORIS alerts lab personnel of failures in real time, no matter where they are, so swift action can be taken to maintain quality control. You'll feel confident in the safety of your samples — with the data to prove it — and have more time to focus on your research efforts.



## What the CORIS Sensor System Can Monitor

The CORIS lab temperature monitoring system is designed to monitor temperatures in all types of cold storage devices: liquid nitrogen (LN2) tanks and dewars (-196°C); -80°C, -40°C and -20°C freezers; +4°C refrigerators and +37°C incubators. Monitoring is possible for a very wide temperature range between +250°C and -250°C, with higher monitoring available upon request.



## How the CORIS Remote Monitoring Solution Works



### STEP 1

#### TEMPERATURE MONITORING PROBE

Each temperature-controlled storage device includes a monitoring probe that measures and records the temperature in real time. Probes are available in a variety of lengths to suit individual needs.



### STEP 3

#### LORA GATEWAY

The LoRa gateway, known for its wireless ability to penetrate concrete and cinder block walls, forwards readings to the CORIS cloud. Each gateway can communicate with over 100 wireless modules.



### STEP 5

#### WEB-BASED UI

From any web-enabled device, users have 24/7 access to device temperature data, reports and alerts. Intuitive navigation paired with a highly customizable setup maximizes efficiencies.



### STEP 2

#### SENSOR MODULE

Depending on the type of appliance, either an extreme temperature sensor (ETS) or a temperature and humidity level (TH-L) sensor module will wirelessly transmit temperature data to the gateway. Readings are sent to the gateway every 2 minutes.



### STEP 4

#### CORIS CLOUD

Temperature readings in the CORIS cloud are logged and compared to established thresholds, with alerts sent out if trigger conditions are met. Once logged, data is stored in the cloud forever.

## Unique Features & Benefits of the CORIS System

- ✓ Customizable smart alerts with a three-tiered escalation scale to indicate if conditions worsen
- ✓ Collected data is permanently stored on the CORIS server and easily accessible for reporting
- ✓ Only one hour of online training is needed to use the intuitive CORIS web-based interface
- ✓ Connections can be made to your network without the need to create a hole in the firewall
- ✓ The integrated, all-in-one nature of CORIS sensors lends itself to an easy DIY installation
- ✓ A cost-effective investment, with everything bundled into an all-inclusive monthly subscription

Find more information at [corismonitoring.com](http://corismonitoring.com).

Call: (212) 710-2973

Email: [info@corismonitoring.com](mailto:info@corismonitoring.com)

**CORIS** LIFE SCIENCES MONITORING