

LIGHTING

SOLUTIONS CATALOGUE

a world of energy

kelliher's.com

LIGHTING DESIGN SERVICE

From initial conception to project handover and every step along the way our expert team are on hand to offer high value engineering solutions, delivered on time, within budget and to your satisfaction.

Our core areas of expertise are commercial, medical, pharmaceutical, retail, education, high end residential and sports pitches. And the best part of our lighting design service is, it's absolutely free of charge.

WE USE THE FOLLOWING BRAND OF DESIGN SOFTWARE:

- DIALux / RELUX
- Lighting Reality - Public Lighting Layouts Created for County Council Approval
- 3D Simulations - Using Sketchup & Vray
- AutoCAD

WE ALSO OFFER THE FOLLOWING:

- Simulation of ambient conditions
- Daylight calculations
- Full documentation of all calculations
- Formatted according to preference
- A lighting solution for every project and budget
- With a full lighting control offering to suit (including wireless)
- CPD Training Registered Provider
- Construction Product Regulations (CPR) for Structured Cabling
- BS EN 62305 Protection Against Lightning
- Solar PV - overview and system design
- Leading the rEVolution - An introduction to Commercial Electric Car Charging and Payment processing



Genesis Aviation, Dublin



Albert Quay, Cork



Capitol Development, Cork



Sports Pitches, various



Glucksman Library UL, Limerick



University Hospital, Galway

CONTENTS

Lighting Design Service	2
The Power of Trusted Brands	4
Street Lighting	5
External Lighting	6
Highbays	11
Amenity Lighting	13
LED Panels	18
School/Battens	21
Downlighters	23
Strip Lighting	25
Corrosion	27
Lighting Controls	31
Floodlights	35
Emergency Lighting	39
Track Lighting	48
Outdoor Domestic Lighting	49
Site Lighting	58
Lighting Terminology	67
The Power of Trusted Brands	72
Notes	73

THE POWER OF TRUSTED BRANDS



THE BENEFITS OF LED LIGHTING



Improved quality, efficiency and performance



Instant on flicker free light.



Energy saving of up to 93%.



Easy installation and retrofitting - 1:1 replacement for traditional products.



Environmentally friendly - LEDs do not contain any harmful materials, making them easier to dispose of and give out no UV or IR emissions.



A quick initial payback on investment.



Ongoing long-term energy and cost savings for your business.



LEDs last significantly longer than traditional lamps, so maintenance costs are significantly reduced.

TRAFFIK R LED

Professional streetlight luminaire for LED light sources.

STREET LIGHTING

Technical Data

Mounting	on outriggers ø60/48mm, on pillar ø60/48mm
Body	high pressure die-cast aluminum
Colour	grey
Lifetime (L80B10)	100,000h
CRI	>70
Efficacy	131 lm/W
Operating temp. range	-40 °C ... +50 °C

5YR
WARRANTY

IP 66

23W-69W
RANGE



Product Codes	Description
2763150	130292.5L021.011 TRAFFIK R LED ED 4600LM/740 IP66 027 GREY
2763151	130292.5L031.011 TRAFFIK R LED ED 6900LM/740 IP66 027 GREY
2763152	130292.5L041.011 TRAFFIK R LED ED 9000LM/740 IP66 027 GR
2763154	TRAFFIK R LED ED 6900LM/740 IP66 027 GREY W/NEMA SOCKET
2763155	TRAFFIK R LED ED 9000LM/740 IP66 027 GREY W/NEMA SOCKET



URBINO LED

Technical Data

Lifetime	100,000h
Colour Temperature	3000K, 4000K, 5700K
Colour	grey, also available in graphite
Efficacy	124 lm/W
CRI	>70

5YR
WARRANTY

IP 66

IK 08

23W-157W
RANGE



Product Codes	Description
2763121	URBINO LED 55W 6250LM/757 GREY
2763122	URBINO LED 84W 10000LM/757 07 GREY
2763123	URBINO LED 110W 13300LM/757 07 GREY
2763124	URBINO LED 55W 6250LM/757 07 GREY W/PHOTOCELL
2763125	URBINO LED 84W 10000LM/757 07 GREY W/PHOTOCELL
2763126	URBINO LED 110W 13300LM/757 07 GREY WPHOTOCELL



DISANO MINI STELVIO

Technical Data

Housing and cover	Die-cast aluminium
Pole connection	Die-cast aluminium

5YR
WARRANTY

76W

IP 66

IK 09

8135 LM



Product Codes	Description
2563160	3275 330361-00 MINI STELVIO



DISANO CLIMA

EXTERNAL LIGHTING

Technical Data

Housing	Die-cast aluminium
Cover	in aluminium plating
Difusser	In shatterproof and self-extinguishing V2 UV-stabilised polycarbonate



5YR
WARRANTY

35W

**IP
65**

**IK
08**

**4392
LM**



Product Codes

Description

2563594

1517 422373-00 CLIMA LED 35W CLD CELL GRAPHITE

AVENIDA LED

For pedestrian zones graphite II. Park luminaire in modern form for LED light sources.

Optical Data

Light distribution	omnidirectional
Way of lighting	direct
Type of optic	017 - for pedestrian zones
Diffuser	polycarbonate
CRI/Ra:	>80
Lumen luminaire [lm]	4400
temperature [K]	4000



5YR
WARRANTY

**CRI
80**

**4400
LM**

**4000
K**

**100000
HRS**



Product Codes

Description

2763141

AVENIDA LED 40W 4400lm 4000K IP66 017

DISANO FARO 5 AND 2

EXTERNAL LIGHTING

Technical Data

Housing	In extruded aluminium, cylindrical section, Ø 180
Difusser	In vandal resistant and V2 self-extinguishing clear polycarbonate, UV-stabilized



Product Codes	Description
2563361	510631-00 FARO 5 1797 LED 14W CLD CELL GRAPHITE

Product Codes	Description
2563360	510060-00 FARO 2 1531 LED 8W CLD CELL GRAPHITE

AVENIDA BOLLARD

Technical Data

Lifetime	96 000h
Efficacy	93 lm/W
Colour Temperature	3000K, 4000k
Body	high pressure die-cast aluminum



XSP HIGH OUTPUT SERIES

Performance Summary

NanoOptic® Precision Delivery Grid™ optic

Efficacy	Up to 145 lm/W
CRI	Minimum 70 CRI
CCT	3000K; 4000K; 5700K
Initial Colour consistency	Class 1 - 10 years on luminaire / 10 years on Colorfast DeltaGuard® finish

10YR
WARRANTY

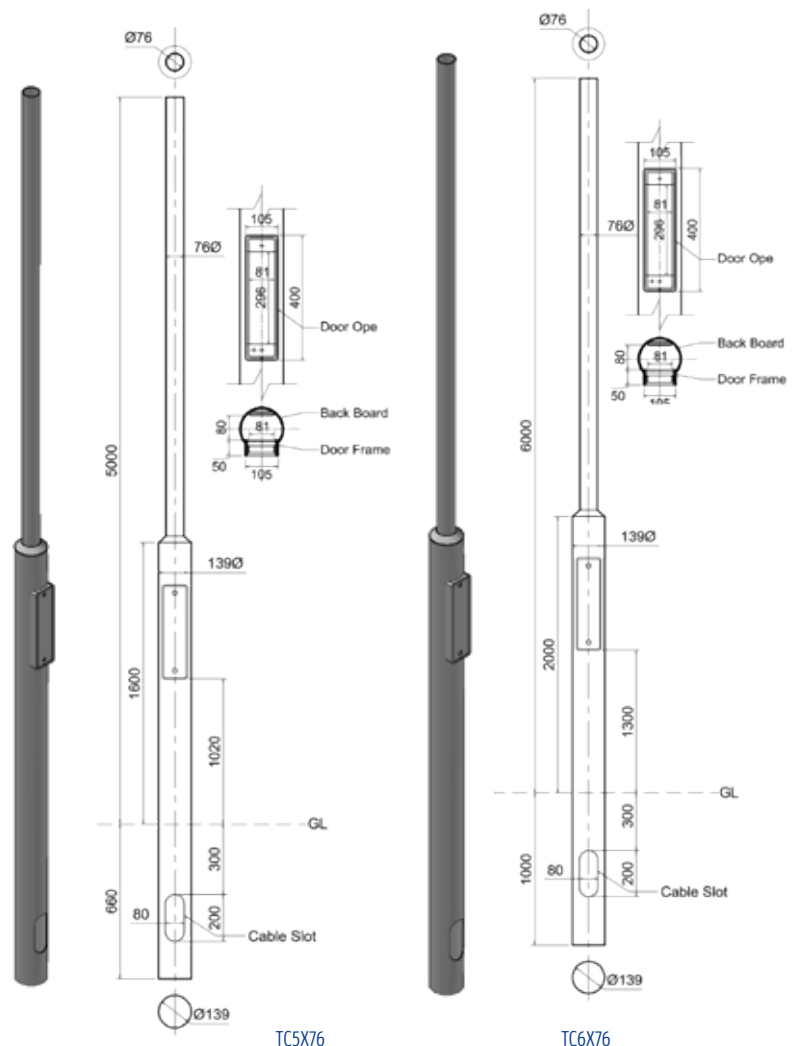
CREE 

Contact Darren Becton for prices and ordering codes



ROUND COLUMN

- Tubular columns provide timeless and elegant solution for your lighting needs and are suitable for post-top mounting or a variety of bracket arms
- Columns are designed to comply with the requirements of the Department of the Environment and local authorities and also with IS EN 40
- Columns constructed from CHS and galvanised internally and externally to BS EN 1461

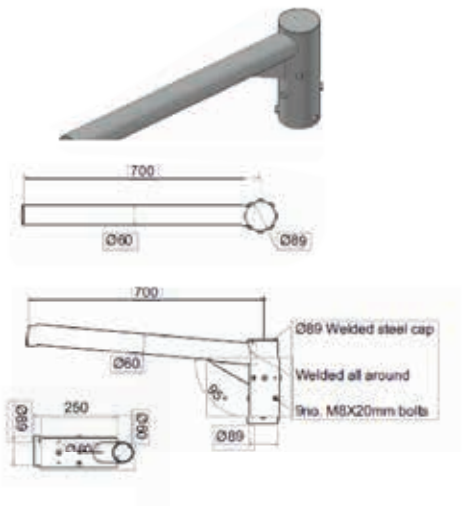


Pittown
ENGINEERING

Product Codes	Description
2333484	6MT X 76MM GALV COLUMN
2333483	5MT X 76MM GALV COLUMN

OUTREACH

Product Codes	Description
2333495	700MM STRAIGHT OUTREACH



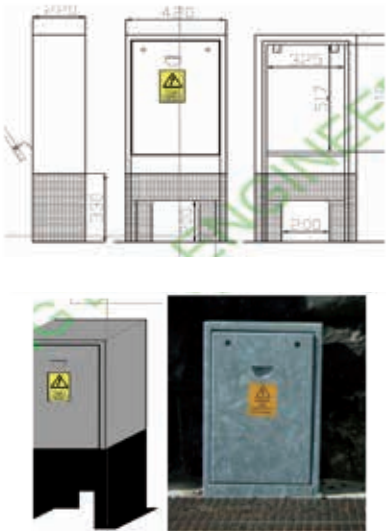
MICRO PILLAR

Product Codes	Description
2333496	ESB MICRO PILLAR



MINI PILLAR

Product Codes	Description
2333497	ESB MINI PILLAR

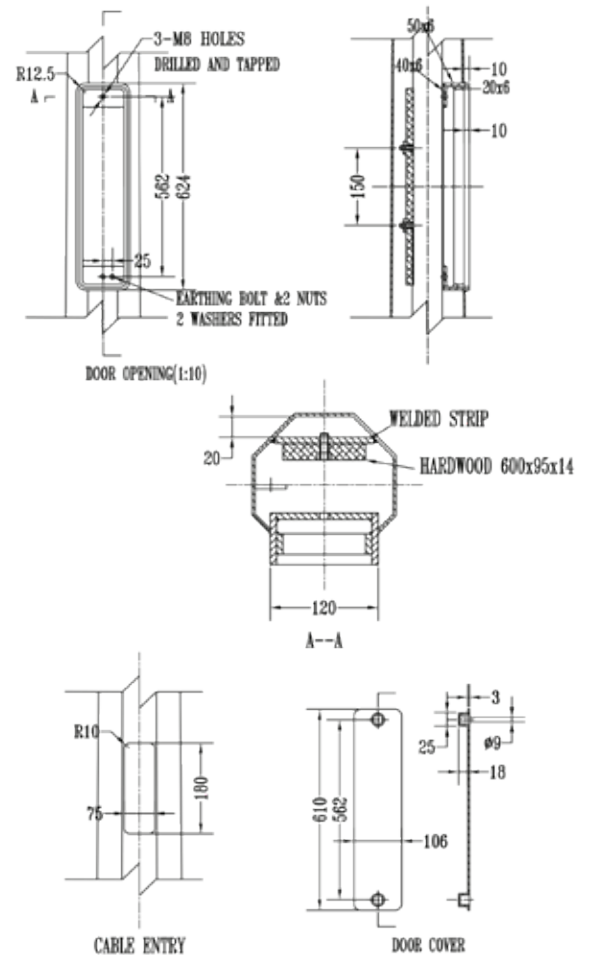


8MT OCTAGONAL POLE

- Octagonal columns provide extreme versatile combination of mounting heights, base types and outreach options making it the most widely used range of columns.
- The octagonal column is suitable for post top mounting or a variety of outreach or extension brackets and t bars are available to suit.



Product Codes	Description
2333425	8M STEEL PUBLIC LIGHTING COLUMN "OCTAGONAL"

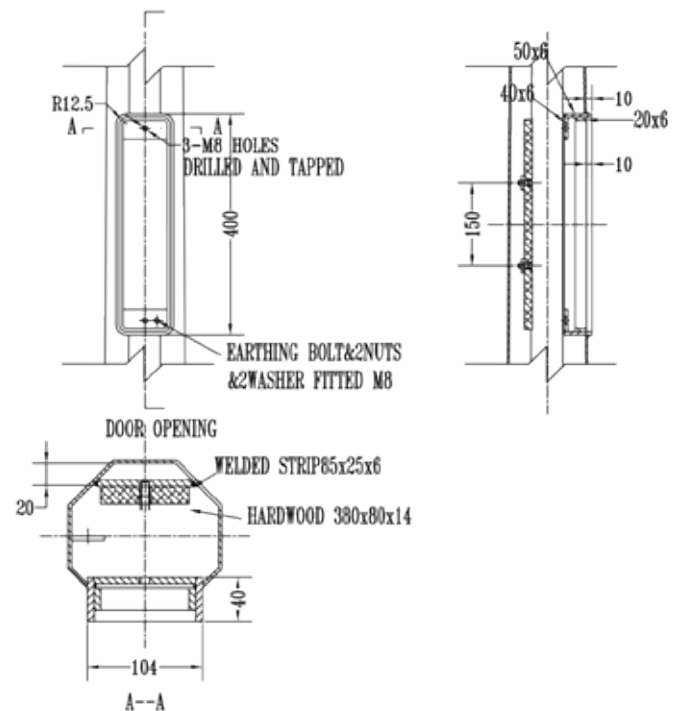


6MT OCTAGONAL POLE

- Octagonal columns provide extreme versatile combination of mounting heights, base types and outreach options making it the most widely used range of columns.
- The octagonal column is suitable for post top mounting or a variety of outreach or extension brackets and t bars are available to suit.



Product Codes	Description
2333424	6M STEEL PUBLIC LIGHTING COLUMN "OCTAGONAL"



LUG CRUISER

Technical Data

Mounting	frame (sold separately), suspended, on chains (on request), for hanging on a cable, with special mounting bracket (on request)
Body	high pressure die-cast aluminum
Colour	grey
Replacement of conventional technology [W]:	250W MH (300W)
Diffuser	Tempered glass
Colour Temperature [K]	4000
Additional information	Ball impact resistance
Lifetime	100,000h
Efficacy	167 lm/W
Operating temperature range	-40 °C ... +45 °C

5YR
WARRANTYIP
66IK
07

Product Codes	Description
2762001	300092.00051 - CRUISER 2 LB LED ED 184W 26700lm 4000K grey - Standard luminaire for internal mounting
2762002	Cruiser 2 LB LED 20000LM/840 IP65 1000DEG. GREY
2762004	150020.00821 LUG CRUISER ADJ MOUNTING BRACKET
2762005	150020.00824 LUG CRUISER SURFACE MOUNTING BRACKET (2PCS)



NVC AZTEC V2

High-output IP65 LED high-bay fitting.

Technical Data

Philips high -power LEDs mounted on metal core PCB
Three wattages available: • 100W, 14,940 lm at 106W, 141 l.m/c.W • 150W, 19,815 lm at 146W, 136 l.m/c.W • 220W, 30,720 lm at 222W, 138 l.m/c.W
CRI > 80
CCT 4000K
Beam Angle 112°
Weight: • 100W - 3,4kg / 150W - 5,2kg / 220W - 6,7kg

5YR
WARRANTYIP
65

Product Codes	Description
2702010	AZTEC V2 100W LED UFO HIGH BAY IP65 COL840 14,940 lm
2702011	AZTEC V2 150W LED UFO HIGH BAY IP65 COL840 19,815 lm
2702012	AZTEC V2 220W LED UFO HIGH BAY IP65 COL840 30,720 lm



LUG TRITON

Industrial luminaire designed to light up large-area objects. It is dedicated to use in applications requiring single pendant mounting.

Technical Data

Colour Temperature	4000K
Lumen Output range	from 10500lm to 35550lm
Sizes	275mm, 370mm
Efficacy	165 lm/W
Beam Angle	60°, 90°, 120°
Operating temperature	-30...+45
Lifetime	100,000h
DALI Version	On Request

5YR
WARRANTY

IP
65

IK
07

L80
B10

CRI
>80



CREE STELLAR SERIES

The new Cree lighting high bay Stellar, it is a small and thin luminaire with attractive appearance. With a lightweight body construction, high impact resistance and high - efficient thermal conduction, Stellar has a simple and compact aesthetic that makes it suitable for different applications. With 4 different sizes (small - medium - large end extra-large) it is flexible to every need.

Performance Summary

Integrated Precision Optics
available in three distributions
(60°; 90°; 120°)

5YR
WARRANTY

IP
65

IK
08

CREE



AMENITY LIGHTING

A photograph of a modern office hallway, tinted with a deep blue color. The hallway is long and perspective-driven, with rows of cubicles on the left and a glass-enclosed staircase on the right. Potted plants are placed along the right side of the hallway. The ceiling is visible, showing recessed lighting fixtures. The overall atmosphere is clean and professional.

REXEL 15W CCT3 LED 2D

AMENITY/BULKHEAD

Specification

LED replacement for 28w 2D

oSensor and Emergency options available

Suitable for switching by PIR, Microwave sensor or photocell

5YR
WARRANTY

IP
65



C.T.
ELECTRIC

Product Codes	Description
2755105	15W POLO IP65 LED 1200LM WHITE CCT3
2755106	15W POLO IP65 LED 1200LM WHITE SENSOR CCT3
2755107	15W POLO IP65 LED 1200LM WHITE EMERGENCY CCT3
2755108	15W POLO IP65 LED 1200LM WHITE SENSOR & EMERGENCY CCT3



REXEL CCT3 18W CIRCULAR LED BULKHEAD

LED replacement for 100W incandescent wall/ceiling fittings. Complete with switch allowing CCT selection between 3000K, 4000K and 6500K.

3YR
WARRANTY

IP
54

UPTO
1450
LUMENS



C.T.
ELECTRIC

Product Codes	Description
2755001	18W CCT3 CIRC LED BULKHEAD WHITE IP54



DISANO 1844 GLOBO 2.0 14W BULKHEAD

Rated 50,000 hours Lifetime (L80B20)

5YR
WARRANTY

IP
65



Product Codes	Description
2565101	GLOBO 2.0 LED 14W WHITE 4K IP65
2565102	GLOBO 2.0 LED 14W SENSOR WHITE 4K IP65
2565103	GLOBO 2.0 LED 14W 3H EMERGENCY WHITE 4K IP65
2565104	GLOBO 2.0 LED 14W 3H EMERG + SENSOR WH 4K IP65



PRELUX VENUS 18W IP65 BULKHEAD

The Prelux Venus 18W standard eyelid bulkhead is a sturdy and reliable LED fitting that provides 800 lumens at 4200K. Prelux Venus fittings are also available in emergency versions with Lithium-Ion battery packs.

Technical Data

Power	18W
Lumens	800lm/1300lm
Colour Rendering Index (CRI)	>80
CCT	4200k



Product Codes	Description
2135020	PXVEN01B VENUS IP65 18W LED BULKHEAD ROUND BLACK
2135021	PXVEN01G VENUS IP65 18W LED BULKHEAD ROUND GREY
2135022	PXVEN02B VENUS IP65 18W LED BULKHEAD EYELID BLACK
2135023	PXVEN02G VENUS IP65 18W LED BULKHEAD EYELID GREY
2135024	PXVEN01BE VENUS IP65 18W LED BULKHEAD ROUND BLACK W/EMG
2135025	PXVEN01GE VENUS IP65 18W LED BULKHEAD ROUND GREY W/EMG
2135026	PXVEN02BE VENUS IP65 18W LED BULKHEAD EYELID BLACK W/EMG
2135027	PXVEN02GE VENUS IP65 18W LED BULKHEAD EYELID GREY W/EMG



BRONX SLIM

Die-cast aluminium and polycarbonate LED fitting for commercial outdoor areas.

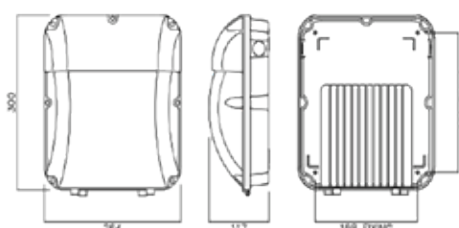
The Bronx slim is a robust IK10, IP65 rated LED bulkhead, ideal for external wall or surface mounting.

This luminaire has a diecast aluminium base, side/rear entry points, polycarbonate hinged diffuser, and retained with stainless steel screws.

Ideal for outdoor lighting, leisure facility lighting, school lighting, car park lighting, and as an amenity solution to provide lighting for entrances, walkways and general building perimeters.



Product Codes	Description
2703009	NBX30SL/LED/840 BRONX SLIM 30W LED WALL PACK
2703010	NBX30SL/LED/PEC/840 BRONX SLIM 30W LED W//PHOTO



DISANO 746 / 747 / 748 OBLÓ 2.0

The Oblò represents the evolution of a historic Disano product, renewed in design and technology to ensure even lower energy consumptions and higher LED light quality. The range of the Oblò fixtures includes lamps in different sizes and different power outputs to allow choosing the best solution for any need.

5YR WARRANTY **15W** **18W** **24W** **4000 K**

Product Codes	Description
2565110	746 OBLO LED 15W CLD CELL 4000K
2565111	747 OBLO LED 18W CLD CELL 4000K
2565112	748 OBLO LED 24W CLD CELL 4000K

AMENITY/BULKHEAD

746 15w



747 18w



748 24w



ROBUS OHIO

Circular or oval modern design using UV stabilised material.

Utilising state of the art SMD LED technology to provide a great light output in a warm white light colour, they offer an attractive outdoor lighting solution with very low running costs and without the annoying issues of traditional lamp failures.

These fittings are not only suitable for installation in domestic applications but can equally be used to excellent effect in sheltered housing outdoor common areas, hotel and restaurant or pub walkways or garden applications.

No screws can be seen so looks really neat

Choice of trim to match or contrast location colour

5YR WARRANTY **IP 54**

Product Codes	Description
2085009	OHIO 8W IP54 OVAL BULKHEAD, 3000K, C/W WHITE & BLACK TRIM
2085010	OHIO 12W IP54 OVAL BULKHEAD, 3000K, C/W WHITE & BLACK TRIM
2085011	OHIO 8W IP54 CIRCULAR BULKHEAD, 3000K
2085012	OHIO 12W IP54 CIRCULAR BULKHEAD, 3000K



SGD T30W 2200LM LED WALL PACK

30W CCT 2200LM LED WALLPACK

30W CCT 2200LM LED WALLPACK + PHOTOCELL

Wall or Ceiling Mounted

3YR
WARRANTY

IP
65

2200
LM

30000
HRS



Product Codes	Description
2725003	30W CCT POLYCARBONATE WALLPACK
2725004	30W CCT POLYCARBONATE WALLPACK W/PHOTOCELL



18W 1400LM CIRC LED WH/BL BULKHEAD

Plus Micro Sens option (Detection range: 1mt - 8mt)

18
W

1400
LM

30000
HRS



Product Codes	Description
2725008	18W SCIR SENSOR-BL/WH-COOL WHITE 1400LM CIRC BULKHEAD
2725009	18W SCIR SENSOR-BL/WH-WARM WHITE 18W 1400LM CIRC BULKHEAD
2725013	18W BL/WH WARM WHITE 1400LM CIRC LED BULKHEAD
2725012	18W BL/WH COOL WHITE 1400LM CIRC LED BULKHEAD



SGD 18W 1400LM OVAL LED WH/BL

Plus Micro Sens option (Detection range: 1mt - 8mt)

18
W

1400
LM

30000
HRS



Product Codes	Description
2725010	18W SOV SENSOR-BL/WH-COOL WHITE 1400LM SOV BULKHEAD
2725011	18W SOV SENSOR-BL/WH-WARM WHITE 1400LM SOV BULKHEAD
2725014	18W SOVLED BL/WH COOL WHITE 1400LM OVAL LED BULKHEAD
2725015	18W SOVLED BL/WH WARM WHITE 1400LM OVAL LED BULKHEAD



AMENITY/BULKHEAD

LED PANELS, BATTENS & DOWNLIGHTS

DISANO MINICOMFORT LED 841

State-of-the-art light source for greater efficiency and Dark Light optics for controlled light emissions (luminance < 500 cd/m² for radial angles > 65°). Absolutely no glare and colours are perceived as if they were viewed under natural light conditions,

Technical Data

Housing	in galvanised steel sheet panles, pre-coated with polyester resin
Cover	with steel panels
Equipment	hinged door and quick clamping Mechanism, with protective film on fixture and baffle louvre
Warranty	Supplied without brackets: for non-surface mounted versions, use bracket acc. 326
On request	integrated multi-sensor, order with subcode -0092 (1-10V)
Colour Rendering Index (CRI)	>89
Lifetime	80,000hrs

5YR
WARRANTY

37W

IP 20

4900 LM

UGR <19



Product Codes	Description
2561474	37W 841 MINI COMFORT LED 160X30LM CLD CELL PANEL



DISANO 842

80% lumen maintenance for 50000 h (L80B20), perfect colour rendering (CRI80 or CRI>90), no glare (UGR<19) and certified low flickering level. Housing and frame: housing in galvanised steel sheet, and frame in aluminium. Inner slab: in PMMA. Diffuser: extruded in prismatic engineering plastic with high thermal transmittance. UGR glare index: UGR<19 (in any situation). - EN 12464. Power factor 0.95 Luminous flux maintenance 80% 50.000h (L80B20).

Technical Data

Colour Rendering Index (CRI)	>80
CCT	4000K
Lifetime	50,000hrs

5YR
WARRANTY

33W

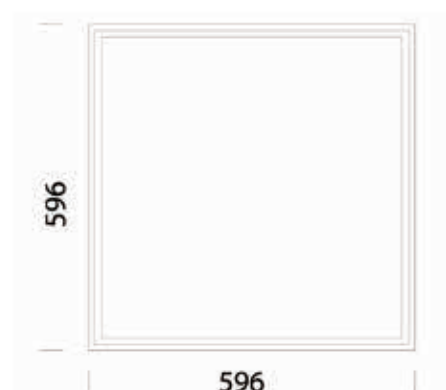
IP 20

3600 LM

UGR <19



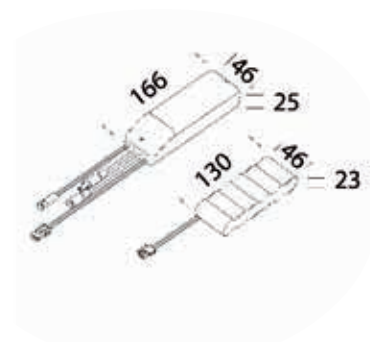
Product Codes	Description
2561487	842 150205-00-3600lm-4000K-CRI80 600X600 LED PANEL WHITE
2561488	842 150205-0041 LED PANEL DALI 33W 3600LM 4000K DALI



DISANO ACC 600

Convert to 3HR Emergency

Product Codes	Description
2561490	986604-31 ACC. 600 3H EMERGENCY KIT



REXEL 40W PANEL

Comparable to T8

Fluorescent (W)	4x18
Total Power (W)	40
Total Light Output (lm)	3,500
Efficacy (lm / cctW)	88
Rated Life (hrs)	50,000
CCT (K)	4,000
CRI (Ra)	80



Product Codes	Description
2751401	Standard, 4000K - 32507 lumen, 600 x 600mm
2751402	Standard, 5000K - 3585 lumen, 600 x 600mm
2751409	Emergency, 4000K, 600 x 600mm
2751403	Standard, 4000K - 3381 lumen, 300 x 1,200mm
2751405	Standard, 4000K - 5336 lumen, 600x1,200mm



REXEL BACK LIT PANELS

Product Spec	600 x 600 Backlit Panel	600 X 600 UGR Back-lit Panel
Wattage	40w	38w
Warranty	5yrs	5yrs
Rated Life (Hrs)	50,000hrs	50,000hrs
Lumen Output	4100lm	4000lm
Lm/Cw	102lm/cw	105lm/cw
TP Rating	TPb	TPb
Compatible EM Pack	Yes	Yes
IP Rating	20	20
Colour Temp	4000k	4000k
Also available in 5000k	4000k	4000k
Triple E Listing	Yes (LIG TBC)	Yes (LIG TBC)
Flicker Free Driver	Yes	Yes



Product Codes	Description
2751411	LED 600 X 600 BACK-LIT PANEL 40W 4100LM
2751412	LED 600 X 600 BACK-LIT UGR PANEL 38W 4000LM



REXEL EMERGENCY KIT

Convert to 3HR Emergency

Product Codes	Description
2084404	EMERGENCY PACK FOR USE W/LED PANEL



MERCURY MKII LED

The Mercury MKII LED range offers a sleek option, where DHSS recommendations are required to be met. The IP44 rating reduces dust and insects entering the fitting. The end caps are fixed in-place via a stainless steel screw which can be replaced with a tamper proof screw making the fitting anti-tamper.

It is Department of Education compliant

Technical Data

Screwed end caps
Covered gear tray
Rated 125 lumen per watt
UGR19
Listed on the SEAI Triple E website under LIG 87465
CRI80

5YR
WARRANTY

IP
44

Product Codes	Description
2631003	SGILLED155350MCMKIIV2 DALI 29W 4600LM LED SUR W/5M 5 CORE FLEX
2631004	SGILLED155350MCMKIIV2 29W 4600LM LED SUR FTG W/5M 3 CORE FLEX



PRELUX CAMPUS

The 58W 5ft Campus surface luminaire is designed specifically for academic buildings. It provides an efficient 100lm/W and an excellent quality of luminance for learning environments.

Technical Data

Colour Rendering Index (CRI)	>80
CCT	4000K
Lifetime	50,000hrs

5YR
WARRANTY

58W

IP
20

5800
LM



Product Codes	Description
2751020	5FT 58W 5800LM LED FLAT-BACK FITTING



ROBUS TOUCAN

SCHOOL/BATTENS

Technical Data

Suitable for use in flat and apartment blocks, public buildings, care homes, communal areas, reception areas

LED replacement for 1x70W T8 fluorescent surface fittings

Low profile aluminium housing with PBT end caps and polycarbonate diffuser

High impact rating of IK08

Complete with stainless steel mounting brackets

Prewired with 1m of flex

High efficacy of 100lm/W

Wide operating ambient temperature range of -20°C to +40°C

Suitable for switching by PIR, Microwave or Photocell



5YR
WARRANTY

IP
65

ROBUS®

Product Codes	Description
2080154	TOUCAN 18W LED BATTEN, 0.6M, IP20, WHITE, 4000K
2080155	TOUCAN 36W LED BATTEN, 1.2M, IP20, WHITE, 4000K
2080156	TOUCAN 45W LED BATTEN, 1.5M, IP20, WHITE, 4000K

ROBUS SCHOLAR LED BATTEN

These superb IP44 fittings replace standard 2 x 36W or 2 x 58W T8 fluorescent battens. Exceptional light output and very low power consumption.



5YR
WARRANTY

CRI
>80

L70
F10

4840
LM

50000
HRS

ROBUS®

Product Codes	Description
2081001	RSC604015-01 SCHOLAR 2X30W SURFACE LED FTG 4000K

5W & 7W FIRE RATED CCT3 DOWNLIGHT

Suitable for use in domestic and commercial fire-rated applications such as living, bathroom and bedroom spaces, hotels and office reception areas, shops, pubs and restaurants.

Technical Data

Lumens	72lm/86lm/77lm
CRI	>80
CCT	3K/4K/5K

3YR
WARRANTY

7W

5W

IP 65



Product Codes	Description
2755314	7W LED FIRE RATED D/LIGHT IP65 70MM DIMM CCT3
2755315	5W LED IP65 FIRE-RATED CCT3 DOWNLIGHT



FOSNOVA ECO LEX, ECO LEX 2 AND ECO LEX 3

Technical Data

Housing	in die cast aluminium
Luminous flux maintenance 80%	50.000h (L80B20).
CCT	4000K
Lumens	1088lm, 1308lm, 2190lm

5YR
WARRANTY

11W

14W

21W

IP 44

Fosnova

Product Codes	Description
2555387	22172904-00 ECO LEX LED IP44 11W 1088LM 4K 90-96MM CUTOUT
2555388	22172915-00 ECO LEX 2 LED IP44 14W 1308LM 4K 170-190MM CUTOUT
2555389	22172916-00 ECOLEX 3 LED 1729 21W 2190 LM 4k 198- 216MM CUTOUT



FOSNOVA LUTHOR

Luthor adjustable recessed LED spotlights offer technologically advanced light and are a very solid product with high quality and high performance to illuminate large commercial spaces.

5YR
WARRANTY

Fosnova

Product Codes	Description
2555373	22087815-00 878 LUTHOR LED, 32W WHITE, 3000 LUMEN, RECESSED
2555374	22087817-00 878 LUTHOR 26W LED ADJUSTABLE, 4000K DEGREE
2555379	22088811 LUTHOR LED, 38W, WHITE, 4000K RECESSED ADJUSTABLE DOWN



LUGSTAR LB LED GEN.2 P/T

Decorative downlight luminaire for suspended ceilings, degree of water and dust-proof IP20 and IP44, for LED light sources, UGR<19

Technical Data

Colour	white
Colour Temperature	3000K, 4000K
IP Rating	IP20 and IP20/4
Equipment	ED, DALI, EM3H
Operating temp. range	0 °C ... +35 °C

Additional Info

Operating temperature range	0 °C ... +25 °C
Lifetime (L70B50)	50 000 h



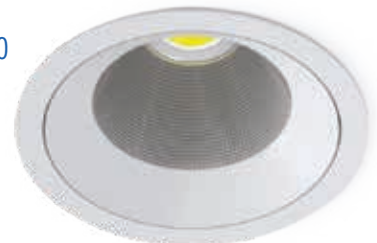
Product Codes	Description
2765301	300031.00006 LUGSTAR LB LED RECESSED ED 2300LM/840 IP44 70°
2765302	300031.00008 LUGSTAR LB LED RECESSED ED 3000LM/840 IP44 70° DE 215mm cut out
2765304	300031.00040 LUGSTAR LB LED RECESSED DALI 3000LM/840 IP44 70°



R100



R160



LUG INTO R100 & R160

Technical Data

Colour Temp.	3000K, 4000Kt	Beam angles depends on model	15°, 18°, 22°, 28°, 34°, 45°, 63°
Equipment	ED, DALI, EM3H on Requestt	Operating temperature range	0 °C ... +40 °C
IP Rating	IP20 and IP20/54	Efficacy	up to 122 lm/W
Mounting	In the ceiling, surface mounted, suspended		



AURORA 4.5W DIMMABLE FIRE RATED DOWNLIGHT

The E5™ fixed fire rated downlights set new levels in performance. Featuring the sparkling low glare multifaceted EnFiniti™ lens and delivering up to 390lm from the 4.5W version. Fibre based insulation coverable - up to 300mm.



Product Codes	Description
2685321	EN-DE5/30 ENLITE 4.5W IP65 FIRERATED D/LIGHT DIMMABLE
2685322	EN-BZE5W ENLITE WHITE BEZEL



ROBUS VEGAS STRIP LIGHTING

This range of LED flexi-strip consists of single colour warm or neutral white, RGB or RGBW strip which can be ordered by the metre.

This is a system, which when used with appropriate drivers and controllers provides a superb lighting effect for domestic, retail, commercial or entertainment venues.

Low power consumption (4.8W/m, 7.2W/m, 9.6W/m, 12W/m, 14.4W/m). Helps to save energy.

Cool running with no ultra violet or infra-red in the light beam. Will not burn, damage or fade leaves, flowers or other sensitive displays.

Range of control components available including Controllers which allow control using the ROBUS CONNECT App. Bespoke designs & controls can be achieved.

Available to order per meter.

VEGAS Cut to Length service available through ROBUS Customised Conversions department.

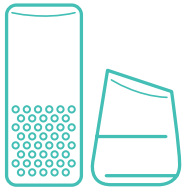
ROBUS

Product Codes	Description
2080162	VEGAS 4.8W/M 12V 60LED/M 3000K IP67 P/M
2080163	VEGAS 4.8W/M 12V 60LED/M 4000K IP67 P/M
2080164	VEGAS 9.6W/M 24V 120LED/M 3000K IP20 P/M
2080165	VEGAS 9.6W/M 24V 120LED/M 4000K IP20 P/M
2080166	VEGAS 30W 12V IP20 CON VOLT DRVR N/DIM
2080167	VEGAS 60W 24V IP20 CON VOLT DRVR N/DIM
2080168	VEGAS 150W 24V IP20 CON VOLT DRVR N/DIM
2080169	VEGAS 60W 24V IP67 CON VOLT DRVR N/DIM
2080172	EASY CLIP "X" CONNECTOR VEGAS STRIP 4.8W 3PK
2080173	EASY CLIP "T" CONNECTOR VEGAS STRIP 4.8W 3PK
2080174	EASY CLIP "L" CONNECTOR VEGAS STRIP 4.8W 3PK
2080178	VEGAS 100W 24V IP67 CON. VOLT DRVR N/DIM
2080179	VEGAS 9.6W/M 24V 120LED/M 3000K IP67 30M
2080180	VEGAS 9.6W/M 24V 120LED/M 4000K IP67 30M
2080181	VEGAS CONNECT 240W WIFI CONTROLLER IP20 SINGLE
2080182	VEGAS CONNECT 240W WIFI CONTROLLER IP20 RGB
2080183	VEGAS CONNECT 240W WIFI CONTROLLER IP20 RGBW
2080184	VEGAS 30W 24V IP20 CONTROLLER VOLT DRIVER NON-DI
2080185	VEGAS 4.8W/M 12V 60LED/M 3000K IP20 P/M 50M RL
2080186	VEGAS 4.8W/M 12V 60LED/M 4000K IP20 P/M 50M RL
2080187	VEGAS 14.W/M 24V 60LED/M RGB IP20 P/M 50M RL
2080188	VEGAS 15W 12V IP20 CON VOLT DRVR N/DIM
2080189	VEGAS 60W 12V IP20 CON VOLT DRVR N/DIM
2080197	VEGAS GLUE FOR IP67 LED STRIP CONNECTORS
2080198	VEGAS HEAT SHRINK FOR IP67 LED STRIP CONNECTORS

STRIP LIGHTING



CLOUD CONNECTED SMART LIGHTING RANGE.
THESE EASY TO USE, AFFORDABLE SMART PRODUCTS
ARE PERFECT FOR DOMESTIC TO SMALL
COMMERCIAL SMART LIGHTING APPLICATIONS.



ALEXA & GOOGLE HOME

ROBUS CONNECT is compatible with Amazon Alexa and Google Assistant.
This allows you to:



GROUP OTHER CLOUD-BASED DEVICES

If you own other Alexa or google assistant smart products you can use them alongside your ROBUS CONNECT devices.

VOICE CONTROL

"Hey Google, set my ROBUS downlights to warm white"
or "Alexa, set my ROBUS Flexi-strip to red".



ULTIMUM
CONNECT



GLS
CONNECT



GU10
CONNECT



DOORBELL
CONNECT



OUTDOOR CAMERA
CONNECT

CODE

2089100	RCFC522B15 FILAMENT CONNECT, DIMMABLE, B15
2089101	RCFC522E14 FILAMENT CONNECT, DIMMABLE, E14
2089102	RCFG722B22 FILAMENT CONNECT, DIMMABLE, B22
2089103	RCFG722E27 FILAMENT CONNECT, DIMMABLE, E27
2089104	RCG7RGCXE27 GLS CONNECT 7W LED LAMP RGB + TUNABLE WHITE E27
2089105	RCG7RGCXB22 GLS CONNECT 7W LED LAMP RGB + TUNABLE WHITE B22
2089106	RCGU5RGCX 5W WIFI RGB & TUNABLE WHITE, LED LAMP
2089200	RCPIR-01 PIR CONNECT, WIFI, IP20, WHITE
2089201	RVACT2-WIFI VEGAS CONNECT 240W, IP20, TUNABLE WHITE
2089300	RCP13UK-01 PLUG CONNECT, WITH POWER METERING, 13A, UK, WHITE
2089301	RCRX200D RX CONNECT 200W WIFI DIMMER
2089500	RCDS-01 DOOR SENSOR CONNECT, WIFI, IP20, WHITE
2089510	RCCI1080-01 CAMERA 4.5W INDOOR 1080P 2-WAY AUDIO IP20 WH
2089512	RCCO1080-01 CAMERA 5.5W OUTDOOR 1080P 2-WAY AUDIO IP65 WH
2089513	RCD1080-04 DOORBELL WITH 1080P CAMERA, IP54, BLK
2089520	RCCHIME-01 CHIME, FOR USE WITH DOORBELL CONNECT, WHITE

CORROSION PROOF



BEGHELLI BS100 LED ADJUSTABLE

High performance fixture with high flux and no glare screen. The fixture is equipped with a 4 position switch driver.

Mounting	Ceiling, suspension, electrified track
Housing	Polycarbonate
Luminous Flux	>60000h (L80B20)
Optic	White reflective powder coated steel

L
1580



5YR
WARRANTY

8000
LM

7500
LM

7000
LM

6500
LM

Beghelli

Product Codes	Description
2090369	40005 59W BS100 LED ADJ L1580MM 6500/7000/7500/8000LM - 4000k
2611502	BS100 47W LED ED 4000K C/PROOF 1500MM W/EMER

NVC CLEVELAND

Polycarbonate weather-proof LED fitting.

Technical Data

Colour Rendering Index (CRI)	>80
CCT	4000K
1550mm (5ft)	<ul style="list-style-type: none"> • Single 35W, 3,875 lm, 110 l.lm/c.W • Twin 57W, 6,600 lm, 114 l.lm/c.W

Applications

Industry, garages & workshops
Food preparation areas
Resistant to impact and many chemical agents, but for suitability in specific environments please take specialist advice

5YR
WARRANTY

TWIN
57W

IP
65

6600
LM



Product Codes	Description
2700394	NCV1X5/840 Cleveland LED Single 5Ft IP65 840
2700395	NCV1X5/M3/840 Cleveland LED Single 5Ft IP65 M3 840
2700392	NCV2X5/840 Cleveland LED Twin 5Ft IP65 840
2700391	NCV2X5/M3/840 Cleveland LED Twin 5Ft IP65 M3 840



DISANO ECHO

Shatterproof Polycarbonate water-proof LED light fitting. The lighting fixture complies with the requirements of the IFS and BRC consortiums and the HACCP directive; ideal for installation in the food industry.

Technical Data

Colour Rendering Index (CRI)	>80
CCT	4000K

5YR
WARRANTY

48W

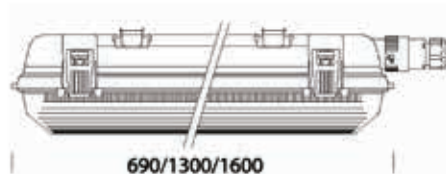
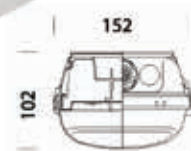
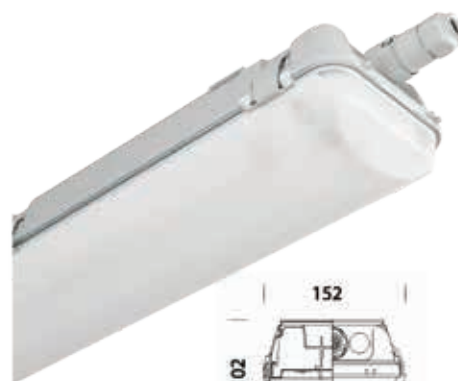
IP 66

7780 LM

disano
illuminazione

Product Codes	Description
2560347	164705-00 927 ECHO LED WHITE 48W, 2,63 kg, Lamps: 7780lm-4000K-CRI 80, Colour GREY
2560350	164705-31 927 ECHO LED EMERGENCY 3H, 3,63 kg, Lamps: 7780lm-4000K-CRI 80, Colour GREY

CORROSION



DISANO 972 HYDRO STYLE

Special version for rooms with a high concentration of chemical products, gas and vapours, such as warehouses, chemical plants, food processing plants or covered external areas (breeding farms).

In these fixtures, the housing and the transparent shield are made in a special material capable of resisting to chemical agents (ammonia, alkaline solutions, soap, alcohol and oil detergents - see table).

Chemical	Weightchange(%)	Appearance
Acetone	4.92	I
Ammonium hydroxide (sp. gr. 0.90)	0.14	A
Ammonium hydroxide (10%)	0.09	A
Detergent solution (0.025%)	0.08	A
Diesel Fuel	0.04	A
Dimethyl formamide	3.8	I
Distilled water	0.1	A
Ethyl alcohol (50%)	0.08	A
Ethyl alcohol (95%)	0.03	A
Isopropanol	-0.04	A
Lipid solution (2%)	0.01	A
Methyl alcohol	Me 0.18	A
Olive oil	0.06	A
Soap solution (1%)	Soa0	A
Sodium chloride solution (10%)	0.07	A
Sodium hydroxide solution (10%)	0.05	A
Toluene	12.14	I

Code Comment

A → resistant

I ← non resistant

5YR
WARRANTY

disano
illuminazione



LUG ATLANTYK

CORROSION

Technical Data

Operating temperature range [°C]	-20 ... +35
Efficacy	145 lm/W
Equipment	ED, DALI, EM3H

Optical Data

Way of lighting	direct
Diffuser	polycarbonate CRI/Ra: ≥80
Lumen LED [lm]	7100
Lumen luminaire [lm]	6050
Temperature [K]	4000

General Data

Lifetime (L80B10)	60 000 h
Additional information	stainless steel clips included outdoor use only under a cover, do not expose to direct sunlight and rain



5YR
WARRANTY

CRI
≥80

IP
65

IK
06



Product Codes	Description
2760340	300090.00062 ATLANTYK LB LED 1640 ED 7100LM/840 PC OPAL IP65

THE WAY
FORWARD IS
SMART
HOME

Smart home technology is increasing in popularity. get clued up and kitted out with our leading Smart Suppliers.

Kellihers Electrical
REXEL GROUP



LIGHTING CONTROLS

LIGHTING CONTROLS

All are specifically designed to maximize performance, energy efficiency and safety.

5YR
WARRANTY

300W LED
MAX LOAD

Product Codes	Description
2082501	PIR 180 STAND ALONE
2082502	RECESSED. 360 DEG PIR
2082508	UNIVERSAL RECESSED/SURFACE 360DEG PIR
2082509	MOTION DETECTOR 360 DEGREE PIR SURFACE
2752510	180 DEG PIR IP54 WHITE DIRECTIONAL SENSOR
2752511	180 DEG PIR IP54 BLACK DIRECTIONAL SENSOR
2082512	180 DEGREE IP44 WALL MOUNTED PIR, MANUAL
2082513	RECESSED 360 DEG PIR CEILING PRESENCE SENSOR IP20
2752514	SURFACE/RECESSED 360 DEG PIR CEILING PRESENCE/OCCUPANCY IP20
2752515	SURFACE 360 DEG PIR CEILING PRESENCE SENSOR IP20
2752516	RECESSED/FLUSH 360 DEG PIR CEILING PRESENCE SENSOR IP20
2082517	CORNER MOUNT BRACKET



BEG SENSORS

Specialists in Occupancy and motion detectors. Ceiling motion detector.

B.E.G.

Product Codes	Description
2062504	92190 PD3-1C-SM SURFACE PIR
2062505	92196 PD3-1C-FC RECESSED PIR



HAGER EE804

Detector 360° wall mounted

Technical Data

Mounting Type Surface Mounted

2YR
WARRANTY

IP
21

Occupancy
Sensor

Presence/PIR
Detector

:hager

Product Codes	Description
2062569	EE804 HAGER SURFACE ON/OFF ONLY PIR



HAGER EE805

Detector 360° flush mounted

2YR
WARRANTY

IP
21

Occupancy
Sensor

Presence/PIR
Detector

:hager

Product Codes	Description
2062568	EE805 HAGER FLUSH ON/OFF ONLY PIR



HAGER EE815

Presence detector 360° monobloc, flush mounted

Technical Properties

Supply voltage	230 V +10% / -15%
Maximum Mounting Height	4m
Colour	white
Detection angle	360°
Diameter detection range on floor	7m

2YR
WARRANTY

IP
21

Occupancy
Sensor

PIR/
Presence/
Absence
Detector

:hager

Product Codes	Description
2062560	EE815 HAGER PIR 7MTR NON DIMMABLE



HAGER EE816

Presence detector 360° monobloc DALI/DSI, flush mounted

Technical Properties

Supply voltage	230 V +10% / -15%
Maximum Mounting Height	4m
Colour	white
Detection angle	360°
Diameter detection range on floor	7m

2YR
WARRANTY

IP
21

Occupancy
Sensor

PIR/
Presence/
Absence Detector
for Dali lighting

:hager

Product Codes	Description
2062561	EE816 HAGER DSI/DALI DIMM. PIR 7MTR



SOUTHGATE EX-OR CONTROLS (PIRS & MARSHALLING BOX)

A range of high performance PIR sensors for dependable control of analogue and digital dimming lighting loads. High definition lenses, performance optics and software are all optimised to provide class leading sensitivity and occupancy detection ensuring that the lights are always on when required.

A high spec EX-OR PIR cable of presence, absence and daylight controls via photocell. Time delay can be altered from 1 minute to 96 hours

Product Codes	Description
SGL/3100/RF	No Flex & Plug
SGL/3100/RF	5m Flex & 7 Pole Plug for LCM (CDW10U2UL)
SGL/3000/DALI	No Flex & Plug
SGL/3000/DALI	5m Flex & 7 Pole Plug for LCM (CDW10U2UL)



MARSHALLING BOX

Detector 360° flush mounted

Product Codes	Description
CDW10U2UL	<ul style="list-style-type: none"> The CDW10U2UL provides an efficient and cost-effective way to interconnect presence detectors and luminaires using industry standard connectors. The CDW10U2UL can connect to ten luminaires and up to two sensors The LCM can be split to allow dimmable and fixed into the same LCM
CDW12U5-BDALI	<ul style="list-style-type: none"> The CDW12U5 is an intelligent lighting control module (LCM) or connection box providing connections for up to twelve luminaires, up to five sensors and up to five switch inputs The unit is designed to simplify installation whilst providing an intelligent managed lighting system, including provision for emergency lighting. The PIR's simply plug in with a CAT 5



FLOODLIGHTS



PHILIPS FLOODS – SIMPLY GREAT LED

The Ledinaire range contains a selection of popular off-the-shelf LED luminaires that comes with the Philips high quality levels. Reliable, energy-efficient and affordable – just what you need.

Features:

- Wide range of applications with lumen outputs from 1,000lm, up to 21,000lm
- Warm white (3000K) and Neutral white (4000K) versions
- Extra flat IP65, IK07 design of floodlights, supplied with cable, can be mounted
- Standing-up or hanging-down
- Long lifetime of 50,000 hours

Technical Data

Lumens	1000lm up to 21000lm
CCT	3K & 4K

5YR
WARRANTY

10W

20W

50W

100W

150W

200W

**IP
65**

Product Codes	Description
2752710	PHILIPS BVP154 10W 840 FLOOD
2752711	PHILIPS BVP154 20W 840 FLOOD
2752712	PHILIPS BVP154 50W 840 FLOOD
2752713	PHILIPS BVP154 10W 840 MICROWAVE SENSOR
2752714	PHILIPS BVP154 20W 840 MICROWAVE SENSOR
2752715	PHILIPS BVP154 50W 840 MICROWAVE SENSOR
2752716	PHILIPS BVP155 100W 840 FLOOD
2752717	PHILIPS BVP155 150W 840 FLOOD
2752718	PHILIPS BVP155 200W 840 FLOOD

50W



20W



150W



CFL SERIES FLOODLIGHT

- The CFL Series Floodlight provides general area lighting and improve the overall look of façades and signage.
- The slim, low profile design adds architectural appeal to any general flood lighting application with crisp uniform white light that offer high performance maximizing energy savings.
- Remarkable light quality and smooth white light, buildings and signage will stand out in the crowd

135 lm/W
Small: Up to 5400 lm
Medium: 10,800 – 20,000 lm
27000 – 32000 lm

5YR
WARRANTY

**IP
65**

**540
LM**

CREE



DISANO RODIO 1897

Higher wattages are well suited for delivering large volumes of light on sports pitches, training areas.

High quality flood light suitable for medium to large open spaces and small to medium sports surfaces. From 23k to 41k lumen output.

5YR
WARRANTY

129W

246W

318W

IP
65

disano
Illuminazione

Product Codes	Description
2562637	1897 414823-00 RODIO COB 196W 23245LM 4000K
2562638	1897 414825-00 RODIO COB 246W 31640LM 4000K
2562639	1897 414826-00 RODIO COB 318W 41110LM 4000K



DISANO RODIO 1891

Technical Data

Lumens	13188lm / 16516lm
CRI	>80
CCT	4K

5YR
WARRANTY

121W

157W

IP
65

disano
Illuminazione



Product Codes	Description
2562688	1891 414786-00 121W RODIO LED FLOODLIGHT
2562689	1891 414787-00 157W RODIO LED FLOODLIGHT

LED OUTDOOR FLOODLIGHT COMMERCIAL/INDUSTRIAL

The industrial floodlight range is ideal for both industrial and commercial applications offering equivalents up to 250W SON/MH, whilst offering significant energy savings over discharge light fittings with a similar size and shape to traditional commercial floodlights, these are ideal for retrofit applications.

Technical Data

Materials: Aluminium housing and body and Glass diffuser	Photocell option available to turn fitting off when there is enough natural daylight
Mounting bracket for 180° tilt	Suitable for switching by PIR, Microwave or Photocell

5YR
WARRANTY

IP
65

CLASS
1

CRI
80+

LEDVANCE

Product Codes	Description
2752633	LDV F7040B FLOODLIGHT 70W/4000K BK IP65, Wattage (W) 70, Lumens (lm) 7700, Efficacy (Lm/W) 110
2752636	LDV F7040BP FLOODLIGHT 70W/4000K PHTC BK IP65, Wattage (W) 70, Lumens (lm) 7700, Efficacy (Lm/W) 110
2752632	LDV F9040B FLOODLIGHT 90W/4000K BK IP65, Wattage (W) 90, Lumens (lm) 10000, Efficacy (Lm/W) 110
2752637	LDV F9040BP FLOODLIGHT 90W/4000K PHTC BK IP65, Wattage (W) 90, Lumens (lm) 10000, Efficacy (Lm/W) 110
2752634	LDV F13540B FLOODLIGHT 135W/4000K BK IP65, Wattage (W) 135, Lumens (lm) 15000, Efficacy (Lm/W) 110
2752638	LDV F13540BP FLOOD 135W/4000K PHTC BK IP65, Wattage (W) 135, Lumens (lm) 15000, Efficacy (Lm/W) 110
2752635	LDV F18040B FLOODLIGHT 180W/4000K BK IP65, Wattage (W) 180, Lumens (lm) 20000, Efficacy (Lm/W) 110
2752639	LDV F18040BP FLOOD 180W/4000K PHTC BK IP65, Wattage (W) 180, Lumens (lm) 20000, Efficacy (Lm/W) 110
2752630	LEDVANCE FLOODLIGHT 20W 4000K BLACK IP6
2752631	LEDVANCE FLOODLIGHT 50W 4000K BLACK IP65



ROBUS REMY

This superb range of LED flood lights provide energy saving solutions for a range of applications in domestic or non-domestic installations. Extensive range of flood lights from 10W to 50W

5YR
WARRANTY

ROBUS

Product Codes	Description
2082672	RRE1040-04 REMY 10W LED FLOOD STD 4000K
2082673	RRE2040-04 REMY 20W LED FLOOD STD 4000K
2082674	RRE3040-04 REMY 30W LED FLOOD STD 4000K
2082675	RRE5040-04 REMY 50W LED FLOOD STD 4000K
2082676	RRE1040P-04 REMY 10W LED FLOOD PIR 4000K
2082677	RRE2040P-04 REMY 20W LED FLOOD PIR 4000K
2082678	RRE3040P-04 REMY 30W LED FLOOD PIR 4000K
2082680	RRE1040-01 REMY 10W LED FLOOD WH 4000K C/W J/BOX
2082681	RRE2040-01 REMY 20W LED FLOOD WH 4000K C/W J/BOX
2082682	RRE3040-01 REMY 30W LED FLOOD WH 4000K C/W J/BOX
2082683	RRE5040-01 REMY 50W LED FLOOD WH 4000K C/W J/BOX
2082684	RRE1040P-01 REMY 10W LED FLOOD PIR WH 4000K C/W J/BOX
2082685	RRE2040P-01 REMY 20W LED FLOOD PIR WH 4000K C/W J/BOX
2082686	RRE3040P-01 REMY 30W LED FLOOD PIR WH 4000K C/W J/BOX



EMERGENCY LIGHTING

LED is now the preferred light source
for all emergency lighting



LOWER MAINTENANCE COSTS

With old fluorescent and incandescent technologies lamps had to be changed regularly. The long life of LEDs means that this is no longer necessary, so maintenance cost are greatly reduced.



RELIABILITY

Fluorescent lamps were never ideally suited to being run on batteries, so blackened lamp ends were a common problem indicating that a lamp was nearing the end of its life. LEDs are well suited to running on battery power and are therefore much more reliable.



BETTER LIGHT DISTRIBUTION

Fitted with a lens, LEDs can give the precise light distribution needed for corridors.

Better light distribution means improved uniformity, better spacing and fewer fittings required to give an installation that conforms to standards.

NVC ARLINGTON

Versatile LED exit sign with drop blade with multitude of fixing options, for 3 hour maintained operation

Application	Options
Corridors	<p>LEGENDS Alternative legends available as listed - to be ordered as separate items. For "man running through door", use suffix V2, as listed.</p> <p>FIXING ATTACHMENTS Optional fixing attachments to allow:</p> <ul style="list-style-type: none"> • Recessed fixing • Wire Suspension • Side wall mounting <p>SELF-TEST option available (suffix ST) giving built in self test regime of monthly functional test & annual 3-hour full duration test. Visual indicators if there is an issue with the product.</p>
Exits	
Escape routes	

5YR
WARRANTY

3YR
BATTERY



Product Codes	Description
2704113	ARLINGTON 2W LED EM BLADE EXIT SIGN V2 LEGEND ARROW DOWN LITHIUM
2704114	ARLINGTON 2W LED EM BLADE EXIT SIGN V2 LEGEND ARROW RIGHT LITHIUM
2704115	ARLINGTON 2W LED EM BLADE EXIT SIGN V2 LEGEND ARROW LEFT LITHIUM
2704116	ARLINGTON RECESSED MOUNTING KIT
2704117	ARLINGTON SIDE WALL MOUNTING KIT
2704118	ARLINGTON WIRE SUSPENSION KIT

NVC LEXINGTON AND LEXINGTON SLIM

5YR
WARRANTY

3YR
BATTERY



Product Codes	Description LEXINGTON
2704103	LEXINGTON LED EXIT BOX 3W MAINTAINED V2 LEGEND ARROW DOWN LITHIUM
2704104	LEXINGTON LED EXIT BOX 3W MAINTAINED V2 LEGEND ARROW RIGHT LITHIUM
2704105	LEXINGTON LED EXIT BOX 3W MAINTAINED V2 LEGEND ARROW LEFT LITHIUM

Product Codes	Description LEXINGTON SLIM
2704106	LEXINGTON SLIM LED EXIT BOX 3W MAINTAINED V2 LEGEND ARROW DOWN LITHIUM
2704107	LEXINGTON SLIM LED EXIT BOX 3W MAINTAINED V2 LEGEND ARROW RIGHT LITHIUM
2704108	LEXINGTON SLIM LED EXIT BOX 3W MAINTAINED V2 LEGEND ARROW LEFT LITHIUM

EMERGENCY LIGHTING

LITHIUM
IRON PHOSPHATE



LITHIUM
IRON PHOSPHATE



NVC NEBRASKA LITHIUM

IP65 LED slim emergency bulkhead with a range of attachments.

Technical Details

175 lm on mains
133 lm on battery supply
1.9W
3 hours operation on battery power after mains failure
Can be installed as maintained or non-maintained

5YR
WARRANTY

IP
65

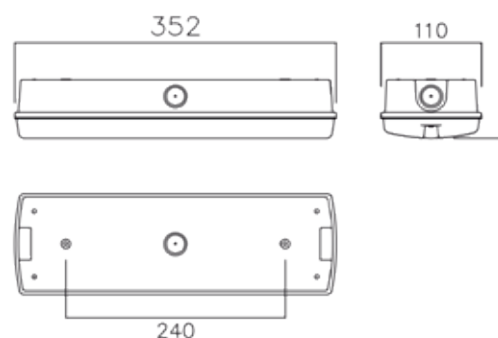
3YR
BATTERY



Product Codes	Description
2704216	NEBRASKA 2W LED IP65 MAINTAINED 3HR LITHIUM
SPECIAL ORDER	Nebraska V3 Recessed Mounting Kit

EMERGENCY LIGHTING

LITHIUM
IRON PHOSPHATE



NVC KANSAS IP20

Twinspot LED IP20 fittings

Technical Details

3-hour Non-Maintained
2 x 3W combined body & heads for use from 0°C - +25°C
300 lumens total output

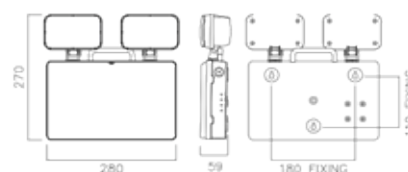
5YR
WARRANTY

IP
20

3YR
BATTERY



Product Codes	Description
2704004	KANSAS LED TWINSPOT IP20 2X3W 300 LUMEN NON MAINTAINED



NVC KANSAS IP65

Twinspot LED IP65 with Self Test.

Application

Suitable for general industrial use,
0°C - +35°C

Construction

Injection moulded ABS body
Polycarbonate heads, including lens
Lithium Iron Phosphate (LiFePO4) 3.2V
5500mAh battery
Suitable for mounting in any
orientation
Heads can be rotated & tilted
Piano key terminal block for ease of
installation

Technical Details

3-hour Non-Maintained
2 x 3W body & heads
380 total lumen output
Self-Testing compliant with
BS5266 comprising of a monthly
functional test & an annual 3-hour
duration test
LED indicators show the status of
the Luminaire

5YR
WARRANTY

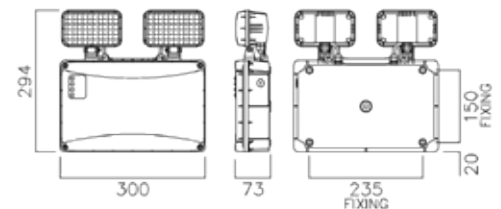
IP
65

3YR
BATTERY



CHANGING
TO LITHIUM
IN 2021

Product Codes	Description
2704003	KANSAS 2X3W TWINSPOOT IP65



NVC SENECA RECESSED

Dedicated LED emergency fittings for recessed mounting.

Application

Corridors
Escape routes

Construction

Moulded polycarbonate body
Acrylic lens
3000mAh battery (not suitable for
use below 0oC)

Technical Details

190 lumens
Non-maintained operation
Choice of two lenses for different
light distributions:
• Wide, giving a circular distribution
• Oval, giving an oval light
distribution. (supplied loose in the box).
Momentary manual test button fitted
Self-test version, compliant with BS5266
available. Suffix STM3 as listed

5YR
WARRANTY

IP
40

3YR
BATTERY



Product Codes	Description
2704401	SENECA 3W 190 LUMEN RECESSED LED NON MAINTAINED
2704408	SENECA 3W 190 LUMEN SURFACE OPEN PLAN LED NON MAINTAINED



LITHIUM
IRON PHOSPHATE

UP TO 50% SAVING ON
RUNNING COSTS v NiCd
DOUBLE THE OPERATIONAL LIFE,
SO HALF THE COST TO MAINTAIN
NO TOXIC SUBSTANCES
USED IN MANUFACTURE
CAN BE RECYCLED

ANSELL BEACON

LED Non-Maintained adjustable die-cast aluminium downlight. 3 hour emergency output. Power and green charge LED are discreetly incorporated within the head. 120degrees beam angle.

Technical Data

CCT	6500K
-----	-------

3YR
WARRANTY

IP
20



Product Codes

Description

2734401

ABLED/3NM BEACON 5W RECESSED EMERGENCY LED, WHITE TRIM



ANSELL SWIFT

Twinspot LED IP20 fittings

Technical Details

Small and unobtrusive LED bulkhead

Supplied with self-adhesive legend.

Optic design provides optimum performance for escape route lighting. Side and rear cable entries.

Screwless gear tray for ease of installation.

Supplied with self-adhesive legend.

CCT: 6500K

3YR
WARRANTY

IP
65

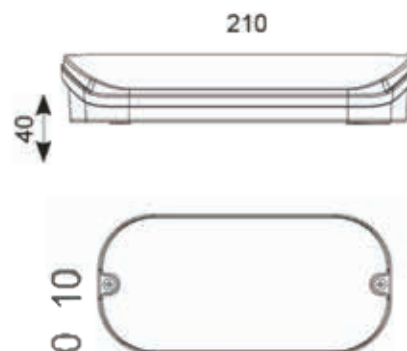


Product Codes

Description

2735015

ASWTLED/3M SWIFT LED 3M/NM BULKHEAD/LEGEND



ANSELL EAGLE 3-IN-1 LED EXIT SIGN

Modern slim 3-In-1 LED Exit Sign, One fitting that enables choice of three different mounting options suspension recessed or side arm wall mounting, Viewing distance 25 Metres

3YR
WARRANTY

IP
20



Product Codes	Description
2734101	AE3LED/3M/W ANSELL EAGLE 3-INI LED EXIT SIGN.



ANSELL GUARDIAN BULKHEAD 3W LED

Ultra-slim profile LED polycarbonate bulkhead, Supplied with self-adhesive legend, Side and rear cable entry, 16mm conduit entry positions, Hinged screwless gear tray for ease of installation, Viewing distance 18 Metres, 50,000 hours average life

Technical Data

CCT	6500K
-----	-------

3YR
WARRANTY

IP
65



Product Codes	Description
2735012	AGLED/3M GUARDIAN LED BULKHEAD
2735014	AGLED/KIT RECESSING KIT FOR GUARDIAN



ANSELL WATCHMAN 3W MAINTAINED/ NON-MAINTAINED

Modern slim 3-In-1 LED Exit Sign, One fitting that enables choice of three different mounting options suspension recessed or side arm wall mounting, Viewing distance 25 Metres

Technical Data

CCT	6000K
-----	-------

3YR
WARRANTY

IP
20



Product Codes	Description
2734100	WATCHMAN LED 3M/NM WHITE EXIT BOX/LEGEND
2734112	WATCHMAN LITHIUM EXIT SIGN 3.5W MAIN/N/MAIN



ANSELL ENCORE LED EXIT SIGN

Ultra slim modern LED 2.6W exit sign with self-test option. White and Silver Grey options.

Technical Data

CCT	6500K
-----	-------

3YR
WARRANTY

IP
20



Product Codes	Description
2734103	ENCORE LED 3M/NM SILVER EXIT BOX C/W LEGENDS
2734104	ENCORE LED 3M/NM WHITE EXIT BOX C/W LEGENDS
2734105	ENCORE LED 3M/NM WHITE EXIT BOX, SELF TEST



ANSELL KESTREL LED SUSPENDED 2W EXIT SIGN

Ultra slim suspended LED emergency exit sign with Self-test emergency as standard.

Technical Data

CCT	6500K
-----	-------

3YR
WARRANTY

IP
20



Product Codes	Description
2734121	KESTREL LED SUSPENDED EXIT SIGN



ANSELL SIGNAL LED EMERGENCY DOWNLIGHT 1.5W NON-MAINTAINED

Economic and compact LED Non-Maintained fixed downlight

Technical Data

CCT	6500K
-----	-------

3YR
WARRANTY

IP
20



Product Codes	Description
2734402	SIGNAL 6500K LED 3NM EMERGENCY DOWNLIGHT



ANSELL FALCON IP65 LED SURFACE EMERGENCY DOWNLIGHT 3W & NON-MAINTAINED

Compact surface ultra-low profile self-test emergency downlight with Self-test as standard

Technical Data

CCT	6000K
-----	-------

3YR
WARRANTY

IP
65



Product Codes	Description
2734405	FALCON 6500K LED 3NM SURFACE DOWNLIGHT White
2734406	FALCON 6500K LED 3NM SURFACE DOWNLIGHT Black
2734407	FALCON LED SUR EMR D/LIGHT IP65 Non Maintained 3W White
2734408	FALCON LED SUR EM D/LIGHT IP65 Non Maintained 3W Black



EMERGENCY LIGHTING

LED is now the preferred light source
for all emergency lighting



LOWER MAINTENANCE COSTS

With old fluorescent and incandescent technologies lamps had to be changed regularly. The long life of LEDs means that this is no longer necessary, so maintenance cost are greatly reduced.



RELIABILITY

Fluorescent lamps were never ideally suited to being run on batteries, so blackened lamp ends were a common problem indicating that a lamp was nearing the end of its life. LEDs are well suited to running on battery power and are therefore much more reliable.



BETTER LIGHT DISTRIBUTION

Fitted with a lens, LEDs can give the precise light distribution needed for corridors.

Better light distribution means improved uniformity, better spacing and fewer fittings required to give an installation that conforms to standards.

PRELUX UNIPRO 3 CIRCUIT TRACKS

Comes in easy to cut 2 and 3 metre lengths. Compatible with most common spotlight systems

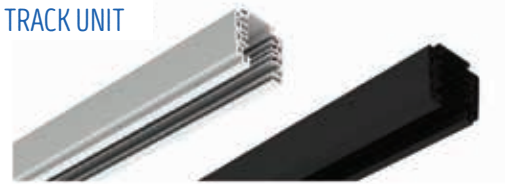
Technical Data

Frame Material	Extruded Aluminium
Phase & Neutral Conductors	2.5mm ² Rectangular Copper
Available colours	White (RAL9010), Black (RAL9005)
Conductors	Three phase conductors (L1, L2 & L3) neutral (N) & ground (PE).
other	Can be cut to size on site



Product Codes	Description
2135913	P1459302 2M TRACK UNIT BLACK
2135914	P1459303 3M TRACK UNIT BLACK
2135915	P1459199 JOINING UNIT BLACK
2135916	P1459321 CONNECTION UNIT BLACK
2135917	P1459381 END CAP BLACK
2135918	P1459411 WIRE SUSPENSION
2135919	P1459102 2M TRACK UNIT WHITE
2135920	P1459103 3M TRACK UNIT WHITE
2135921	P1459199 JOINING UNIT WHITE
2135922	P1459121 CONNECTION UNIT WHITE
2135923	P1459181 END CAP WHITE

TRACK UNIT



CONNECTION UNIT



JOINING UNIT



END CAP



PRELUX NICO LED TRACK SPOTLIGHTS

Nico 35W with on-board dimming

Three circuit



Product Codes	Description
2135901	PX12WH3K NIKO LED SPOT 12W WHITE 3K
2135902	PX12WH4K NIKO LED SPOT 12W WHITE 4K
2135903	PX12BL3K NIKO LED SPOT 12W BLACK 3K
2135904	PX12BL4K NIKO LED SPOT 12W BLACK 4K
2135905	PX35WH3K NIKO LED SPOT 35W WHITE 3K
2135906	PX35WH4K NIKO LED SPOT 35W WHITE 4K
2135907	PX35BL2K NIKO LED SPOT 35W BLACK 3K
2135908	PX35BL4K NIKO LED SPOT 35W BLACK 4K



ANNA LANTERN

OUTDOOR DOMESTIC LIGHTING

Fumagalli Lighting



Product Codes	Description
2133554	ANNA LANTERN/BISSO BRKT BLACK



IESSE LANTERN



Product Codes	Description
2133569	IESSE BLACK HALF LANTERN



ANNA LANTERN & MIZAR POST



Product Codes	Description
2133502	MIZAR POST/ANNA HEAD BACK



MARTA UP & DOWN BULKHEAD LAMP

IP
55



Product Codes	Description
2133527	MARTA 90 2L 2X 3.5W LED BLACK
2133528	MARTA 160 2L LED 2X10W LED GREY

OUTDOOR DOMESTIC LIGHTING

Fumagalli Lighting

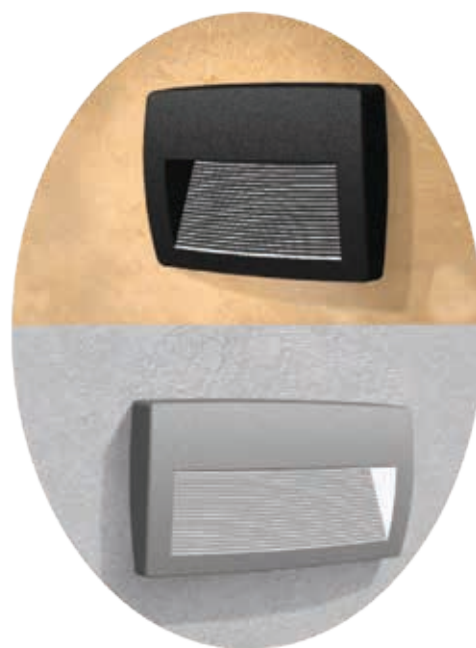


LORENZA

IP
55



Product Codes	Description
2133613	LORENZA 150 4W SURFACE BLACK LED
2133614	LORENZA 150 4W SURFACE GREY LED
2133615	LORENZA 150 4W SURFACE WHITE LED



NINA

IP
55



Product Codes	Description
2133616	NINA 150 4W RECESSED BLACK LED
2133617	NINA 150 4W RECESSED GREY LED
2133618	NINA 150 4W RECESSED WHITE LED
2133619	NINA 190 8.5W RECESSED BLACK LED
2133620	NINA 190 8.5W RECESSED GREY LED
2133621	NINA 190 8.5W RECESSED WHITE LED
2133623	NINA 270 11W RECESSED BLACK LED
2133624	NINA 270 11W RECESSED GREY LED
2133625	NINA 270 11W RECESSED WHITE LED



AMELIA



Product Codes	Description
2133519	AMELIA 400MM BOLLARD BLACK 12W
2133520	AMELIA SPIKE 12W BLACK
2133521	AMELIA 800MM BOLLARD 12W BLACK
2133522	AMELIA WALL BRACKET 8W BLACK
2133603	AMELIA 400 BOLLARD 12W GREY
2133604	AMELIA 800 BOLLARD 12W GREY



OUTDOOR DOMESTIC LIGHTING

Fumagalli Lighting

CARLO

Spike and Wall fitting also available.



Product Codes	Description
2133523	CARLO 400MM BOLLARD 3.5W BLACK
2133524	CARLO SPIKE 3.5W BLACK
2133525	CARLO 800MM BOLLARD 3.5W BLACK
2133526	CARLO WALL BRACKET 3.5W BLACK



ABRAM

Spike and Wall fitting also available.



Product Codes	Description
2133607	ABRAM 150 4W UP/DOWN BLACK LED
2133608	ABRAM 150 4W UP/DOWN GREY LED
2133609	ABRAM 150 4W UP/DOWN WHITE LED
2133610	ABRAM 190 8.5W UP/DOWN BLACK LED
2133611	ABRAM 190 8.5W UP/DOWN GREY LED
2133612	ABRAM 190 8.5W UP/DOWN WHITE LED



ELISA

Spike and Wall fitting also available.



Product Codes	Description
2133518	ELISA 800MM 10W BOLLARD BLACK
2133600	ELISA 500MM BOLLARD 10W BLACK
2133601	ELISA 500MM BOLLARD 10W GREY
2133602	ELISA 800MM BOLLARD 10W GREY

OUTDOOR DOMESTIC LIGHTING

Fumagalli Lighting



For more Fumagalli products, please go to <https://kellihers.com/fumagalli-lighting>

SENZA LED BOLLARD

Contemporary die-cast aluminium LED bollard.



Product Codes	Description
2733503	ASELEDB/060 6.5W SENZA 4000K LED 600MM BOLLARD
2733504	ASELEDB/100 6.5W SENZA 4000K LED 1000MM BOLLARD

Ansell Outdoor Lighting



ARCO LED BOLLARD

Ultra modern LED bollard.



Product Codes	Description
2733505	AARLEDB/060 11W ARCO 4000K LED 600MM BOLLARD
2733506	AARLEDB/100 9W ARCO 4000K LED 1000MM BOLLARD



HELDER CIRCULAR BULKHEAD BLACK EYELID

Polycarbonate circular bulkhead for external applications.

2YR
WARRANTY

14W



Product Codes	Description
2736840	AHELED/EB HELDER LED CIRCULAR BULK-BLACK EYELID
2736841	AHELED/EB/PIR HELDER LED CIRCUL BULK-BLACK EYELIDPIR



MATTONE UNI-BRICKLIGHT CCT

Universal polycarbonate LED brick light & unique adjustable feet allows for installation into multiple brick apertures.

2YR
WARRANTY

3W



Product Codes	Description
2736835	AMATBLED MATTONE LED UNI-BRICKLIGHT CCT



REEF SURFACE DOWNLIGHT

Durable indoor/outdoor surface mounted downlight.

3YR
WARRANTY



Product Codes	Description
2736831	AREELED REEF LED SURFACE DOWNLIGHT CCT BLACK 5W



BILUME ACTIVATE LED WALL LIGHT

Suitable for use in domestic and commercial outdoor applications as wall mounted decorative lighting.

5YR
WARRANTY

12W

**IP
65**

ROBUS®

Product Codes

Description

2086895

RABL0153038-25 BILUME 12W DOUBLE LED WALL LIGHTS IP65 3000K



OUTDOOR DOMESTIC LIGHTING

Fumagalli Lighting

VITA CIRCULAR LED KIT

High quality rated LED lighting kit.

2YR
WARRANTY

**IP
68**

ROBUS®

Product Codes

Description

2086818

R3LED10S-01 WHITE GROUND LIGHTS 10PK



LED GU10 GARDEN SPIKE

High quality ground spike with horizontal and vertical head adjustment.

2YR
WARRANTY

**IP
65**

ROBUS®

Product Codes

Description

2086869

LS50GU-04 GU10 50W GARDEN SPIKE



EWOK LED MAINS GROUNDLIGHT, IP67

LED replacement for halogen decking lights. Suitable for use in indoor and outdoor applications

2YR
WARRANTY

IP
67

6000
K

CRI
>75

ROBUS®

Product Codes	Description
2086857	R6LED240S-01 IP67 MAINS GROUNDLIGHT - 6 LEDS WHITE

OUTDOOR DOMESTIC LIGHTING

Robus Outdoor Lighting



Luceco Outdoor Lighting

BLUETOOTH IP65 OUTDOOR LED FLAME SPEAKER

Ideal for streaming music around your home or garden.

- USB charging cable supplied suitable for internal or external use
- Up to 8Hrs of music with flame effect ideal for nightlight

IP
65

LUCECO

Product Codes	Description
2126801	BLUETOOTH SPEAKER IP65 LED FLAMELIGHT USB



SOLAR GUARDIAN WALL LIGHT

Ideal for areas without mains power.

- PIR / Photocell with security and presence detection modes of operation
- No wiring needed, FREE light Perfect for residential applications

4000
K

6.8W

IP
44

LUCECO

Product Codes	Description
2126205	800LM 6.8W LED SOLAR WALL LIGHT BLACK



OUTDOOR DOMESTIC LIGHTING

Luceco Outdoor Lighting

SOLAR GUARDIAN WALL LIGHT

Perfect for external residential applications including patios.

- PIR / Photocell with security and presence detection modes of operation
- No wiring needed, FREE light Perfect for residential applications

4000
K

3.2W

IP
44

LUCECO

Product Codes	Description
2126204	400LM 3.2W LED SOLAR WALL LIGHT BLACK



LUCECO

Portable rechargeable work light with USB 2 charging, with 1.8A USB output for powering portable devices. 750 Lumen output, 3Hour Battery Duration at full output

IP
54

30000
HRS

5000K

Product Codes	Description
2126206	LSWR7BR-01 USB RECHARGEABLE 10W W/LIGHT 5000k 0.5M

LUCECO

RECHARGEABLE CLAMP WORK LIGHT. 4 hour battery duration at full output

2YR
WARRANTY

IP
54

6000K

Product Codes	Description
2126209	LCWR13G60-01 RECHARGEABLE CLAMP WORKLIGHT 1300LM 15W 6000K

LUCECO

USB rechargeable LED Inspection head torch which is durable and lightweight

6500K

IK
07

600
HRS

CRI
>80

Product Codes	Description
2126213	LILH15P65 USB RECHARGEABLE INSPECTION HEAD TORCH

OUTDOOR DOMESTIC LIGHTING

Luceco Outdoor Lighting



An aerial, high-angle photograph of a large-scale construction site at night. The entire scene is bathed in a deep blue light, likely from site-specific lighting. The image shows multiple levels of a building under construction, with extensive scaffolding and rebar visible. Numerous construction materials, including bags of cement and stacks of lumber, are scattered across the site. A yellow tower crane is visible on the left side. The overall atmosphere is industrial and nocturnal.

SITE LIGHTING

LED NON CORROSIVE WORK

An LED non corrosive work light range with a operating temperature of 0°C to +50°C, ideal for use in any indoor/outdoor commercial or industrial construction sites.

Material construction

- Polycarbonate - Yellow base
- Polycarbonate - Opal diffuser

120° Beam angle

Dual brackets included for suspension and wall mounting

3 hour emergency duration option available

2YR
WARRANTY

IP
65

IK
08

CLASS
1

Product Codes	Description
2170001	RXL-TRLED8010 2FT WEATHERPROOF 110V YELLOW BODY, 20W 2000lm, 100lm/W, 6300K
2170002	RXL-TRLED8011 2FT WEATHERPROOF 110V YELLOW BODY E3 Y, 20W, 2000lm, 100lm/W 6300K
2170301	RXL-TRLED8020 5FT WEATHERPROOF 110V YELLOW BODY, 40W, 3960lm, 110lm/W, 6300K
2170302	RXL-TRLED8021 5FT WEATHERPROOF 110V YELLOW BODY E3 Y, 40W, 3960lm, 110lm/W, 6300K



LED PLASTERERS LIGHT

n LED Plasterers light perfect for working in both indoor and outdoor confined spaces, with operating temperatures of 0°C to +40°C.

Material construction

- Polycarbonate - Yellow base
- Polycarbonate - Opal diffuser

120° Beam angle

Supplied with foldaway stand for ease of storage and transportation

Supplied with two 16A outlet connections for linkable applications

5m lead and 16A 110V yellow plug

1YR
WARRANTY

IP
44

IK
08

Product Codes	Description
2172402	RXL-P1000 2FT PLASTERERS LIGHT A-FRAME 110V, 20W, 2200lm, 110lm/W, 6300K
2172405	RXL-P1010 2FT PLASTERERS LIGHT TRIPOD 110V, 20W, 2200lm, 110lm/W, 6300K
2172406	RXL-P1020 5FT PLASTERERS LIGHT TRIPOD 110V, 30W, 3300lm, 110lm/W, 6300K



LED TASK LIGHT

A range of task and tripod worklights perfect for indoor and outdoor illumination.

Material construction

- Aluminium body - Yellow
- Tempered glass cover

Complete with 1.5m lead and 16A plug

3YR
WARRANTY

IP
65

IK
08

Product Codes	Description
2172407	RXL-S4010 110v PORTABLE TASK LIGHT, 10W, 900lm, 90lm/W, 4000K



LED TRIPOD WORKLIGHT

A Range of task and tripod worklights perfect for indoor and outdoor illumination.

Material construction

- Light fitting - Aluminium body - Yellow
- Tempered glass cover
- Tripod - Die cast Aluminium - Yellow

Comes with a telescopic tripod for easy storage and transportation

Complete with 3m lead and 16A plug

3YR
WARRANTY

IP
65

IK
07

Product Codes	Description
2172408	RXL-S4110 110V TRIPOD TASK LIGHT, 10W, 900lm, 90lm/W, 4000K
2172409	RXL-S4120 110V TWIN TRIPOD TASK LIGHT, 10W, 900l, 90lm/W, 4000K



SITE FLOODLIGHT

A range of floodlights suitable for use in industrial and commercial applications such as construction sites.

Material construction

- Aluminium body - Yellow
- Toughened glass cover

500mm lead

3YR
WARRANTY

IP
65

30000
HRS

Product Codes	Description
2172610	N6279 4500LM 50W FLOODLIGHT 110V YELLOW
2172601	N6280 LED 110V 70W REX SLIM FLOODLIGHT
2172602	N6281 LED 110V 100W REX SLIM FLOODLIGHT
2172603	N6282 LED 110V 150W REX SLIM FLOODLIGHT
2172604	N6283 LED 110V 300W REX SLIM FLOODLIGHT



LED FESTOON KITS

A range of festoon lighting kits that are an ideal temporary lighting solution for construction sites due to their light weight and flexibility.

22M Length with 2M Spacings

Option to have festoon only or lamp included kit comes with 10 LED lamps



1YR
WARRANTY

IP
44

Product Codes	Description
2176801	RXL-SEFLEDES, 110V 22M KIT INC ES LAMPS
2176802	RXL-SEFLEDBC, 110V 22M KIT INC BC LAMPS

INTEGRATED FESTOON KIT

LED Plasterers light perfect for working in both indoor and outdoor confined spaces, with operating temperatures of 0°C to +40°C.

Suitable temporary lighting solution for indoor & outdoor use

Complete 20m kit with 7 fully integrated LED lamps



1YR
WARRANTY

IP
65

Product Codes	Description
2176801	SEFLKITINT, 20M INTEGRATED FESTOON KIT 7 X 10W

110V TRANSFORMERS

Robust GRP case with carry handle

Resettable thermal cut out

Resettable thermal cut out

1YR
WARRANTY

IP
44

Product Codes	Description
4859808	RXL-1500/2/B 1500VA SITE TRANSFORMER, 1.5KVA, 0.9.KVA
4859805	RXL-3300/2/B 3300VA SITE TRANSFORMER, 3.3KVA, 2.2KVA
4859809	RXL-10000/1PH 10000VA SITE TRANSFORMER, 10KVA, 7.0KVA



POWER SPLITTER

A Range of task and tripod worklights perfect for indoor and outdoor illumination.

Power splitter with four 16A 110V outlets

Heavy duty yellow steel case with carry handle

Complete with lead and 16A 110V plug

1YR
WARRANTY

IP
44

Product Codes	Description
3450301	RXL-PS45 POWER SPLITTER WITH CABLE, 2.5M



EXTENSION LEAD REELS

2 x 110V 16A dust covered outlet sockets

Easy wind handle

Optimised design for increased cable capacity

1YR
WARRANTY

IP
44

Product Codes	Description
3450363	RXL-SE1010 CASSETTE CABLE REEL 16A, 10M, 110v
3450365	RXL-SE1030 OPEN CABLE REEL 16A, 25M, 110v



EXTENSION LEAD

Made with highly durable arctic grade cable

Fitted with 16A 110v plug and coupler

Must be used uncoiled

1YR
WARRANTY

IP
44

Product Codes	Description
3450302	RXL-SE3010 YELLOW 1.5MM 16A EXT LEAD, 14m
3450303	RXL-SE3030 YELLOW 2.5MM 16A EXT LEAD, 14m
3450310	RXL-SE3050 YELLOW 1.5MM 16A EXT LEAD, 25m
3450311	RXL-SE3070 YELLOW 2.5MM 16A EXT LEAD, 25m



The future is connected

The future starts now, are you ready for it?

Combine Philips Interact Ready lamps and luminaires with Interact Pro software, to create smart lighting systems for your customers.

Philips Interact Ready lighting works with the Interact Pro dashboard and app.



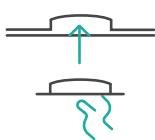
Want to become a Philips Connected Lighting expert?

Scan the QR code to sign up for free training:

Get connected in 5 simple steps



1. Unbox



2. Install

Interact Pro gateway and Interact Ready lighting



3. Download

Interact Pro app



4. Configure

system with Interact Pro app



5. Manage

monitor and modify via Interact Pro dashboard

The Interact Pro dashboard and app work with a range of Philips luminaires and lamps and a set of wireless switches and sensors that are Interact Ready.

You can customise the software's settings for specific workspaces. Whether you're connecting 20 light points or 200, Interact Pro helps everyone to work smarter.

Overview of most popular **Interact Ready** lamps and luminaires

Philips Interact Ready lighting

interact
ready.



NEW

CoreLine
Waterproof Interact Ready



MasterConnect LEDtube T8
Ultra Output



CoreLine Panel
Interact Ready



CoreLine Downlight
Interact Ready

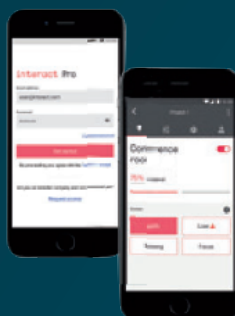
works
with

Interact Pro software

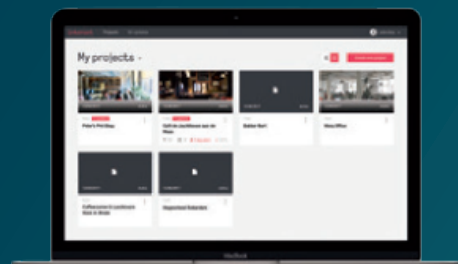
interact Pro



Interact Pro gateway



Interact Pro app



Interact Pro dashboard

AURORA[®]

VALUE BEYOND ILLUMINATION[™]

NEW SIMPLE SMART CONTROL **AT YOUR FINGERTIPS**

Aone[™]
SMART LIGHTING SPACES



connect.
control[™]



WORKS STRAIGHT OUT OF THE BOX
EASY TO INSTALL • NO SETUP • NO HUB REQUIRED

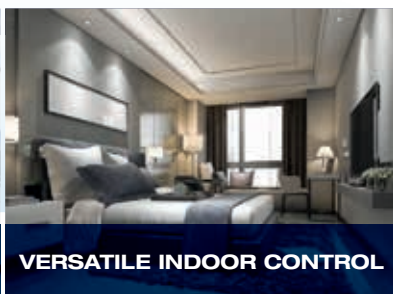
APP AVAILABLE FOR ADVANCED CONTROL
EDIT SCENES • SYNC MUSIC • SET SCHEDULES



SMARTEN LIVING SPACES



SET THE PERFECT MOOD



VERSATILE INDOOR CONTROL



VIBRANT OUTDOOR LIVING

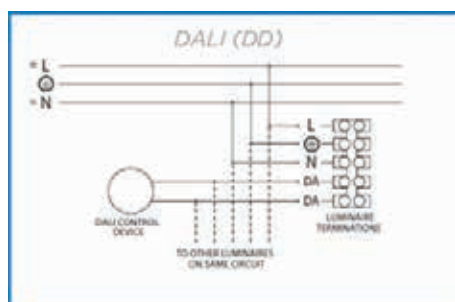
B L U E T O O T H L I G H T I N G S O L U T I O N S

auroralighting.com/connect.control

LIGHTING TERMINOLOGY

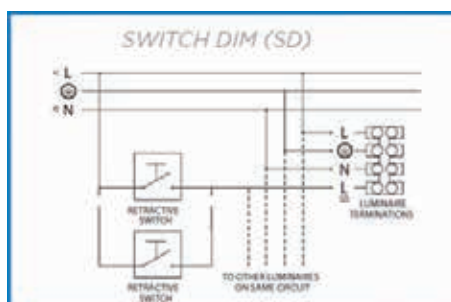
DIMMING CONTROL SIGNALS:

There are three types of dimming control signal that we offer as standard options and it may be helpful to think of them as languages - a means by which the driver is told what to do. The three types of dimming control signal we offer are as follows:



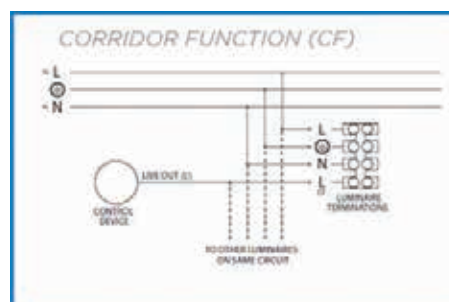
DALI (DD)

Typically, a DALI control signal will be generated by a sensor or a lighting control system. Manually operated rotary knobs that generate a DALI control signal are available (at some cost), but if pure manual control is required we would usually recommend switch dim as the simpler and more economical solution.



SWITCH DIM (SD)

Switch dim is a means of controlling a luminaire via a retractive switch. It is a low-cost, intuitive and easy-to-install approach to providing manual dimming control.



CORRIDOR FUNCTION (CF)

Corridor function can be operated by an occupancy sensor, time switch or manual switch. When the switch contact is "made" the light output will be 100%; when the contact is broken the light output will be 10%, or some other value that may be programmed in the driver or control gear.

WHAT ARE TPA AND TPB FOR LIGHTING:

TP(a) and TP(b) are terms that classify lighting diffusers according to their flammability. Polycarbonate diffusers over 3mm thick are automatically classified as TP(a), along with any other material that self-extinguishes within 5 seconds when a flame has been removed. TP(b) diffusers may burn, but not at a speed of more than 50mm per minute.

The terms TP(a) and TP(b) are used in the UK Building Regulations, Fire Safety, Approved Document B, Volume 2 - Buildings other than dwellings.

TP means "thermoplastic" and TP materials, such as polycarbonate (PC), acrylic (PMMA) and polystyrene (PS), are commonly used as diffusers in light fittings. In the context of lighting diffusers in the UK Building Regulations these are classified as TP(a) or TP(b).

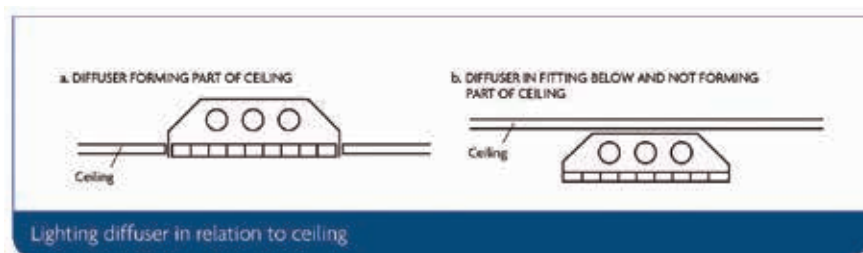
Provided that the material is rated TP(a) or TP(b) it may be used as part of a ceiling, subject to the restrictions below. Material that is rated neither TP(a) nor TP(b) may not be used as a lighting diffuser that is part of a ceiling.

Here is a quick summary of TP(a) and TP(b) and how these terms relate to lighting in buildings other than dwellings.

LIGHTING TERMINOLOGY

WHEN IS A LIGHTING DIFFUSER PART OF A CEILING?

A lighting diffuser is only judged to be part of the ceiling if it is recessed into it. The diagram here is taken from the UK building regulations and makes it very clear - if a light fitting is surface mounted or suspended then it is not part of the ceiling, so the consideration of TP(a) or TP(b) simply does not apply.



In surface mounted and suspended light fittings, which are by definition not part of the ceiling, the type of material that may be used for the diffuser is regulated by the appropriate product standard, in this case BS EN60598. Note that this is a product standard, not a building standard, and 60598 makes no mention of TP(a) or TP(b) at all.

WHAT'S THE DIFFERENCE BETWEEN TPA AND TPB RATED MATERIALS?

The difference between TP(a) and TP(b) rated materials is in their composition and thickness or how they react under test conditions when a flame is applied to them.

To be classed as TP(a) a lighting diffuser material must be either:

- Polycarbonate at least 3mm thick, or
- Polycarbonate with a class 1 rating when tested to BS 476-7, or
- Any other material that when tested to BS 2782-0 Method 508A performs so that the test flame extinguishes before a certain point on the test sample and any flame or afterglow self-extinguishes within 5 seconds of the source of ignition being removed.

To be classed as TP(b) a lighting diffuser material must be either:

- Polycarbonate up to 3mm thick, or
- Any other material from 1.5mm - 3.0mm thick that, when tested to BS 2782-0 Method 508A has a maximum rate of burning of 50mm/minute.

CAN LIGHT FITTINGS WITH TPA RATED DIFFUSERS BE USED ANYWHERE?

Diffusers made of TP(a) rated material can be used to an unlimited extent in the ceilings of rooms and circulation areas, but not in "protected stairways".

A Protected Stairway is, in the words of Approved Document B, "A stair that leads to a final exit to a place of safety and that is adequately enclosed with fire resisting construction. Included in the definition is any exit passageway between the foot of the stair and the final exit."

In a protected stairway no thermoplastic materials at all can be used as part of the ceiling.

LIGHTING TERMINOLOGY

WHAT RESTRICTIONS APPLY TO THE USE OF TPB RATED DIFFUSERS?

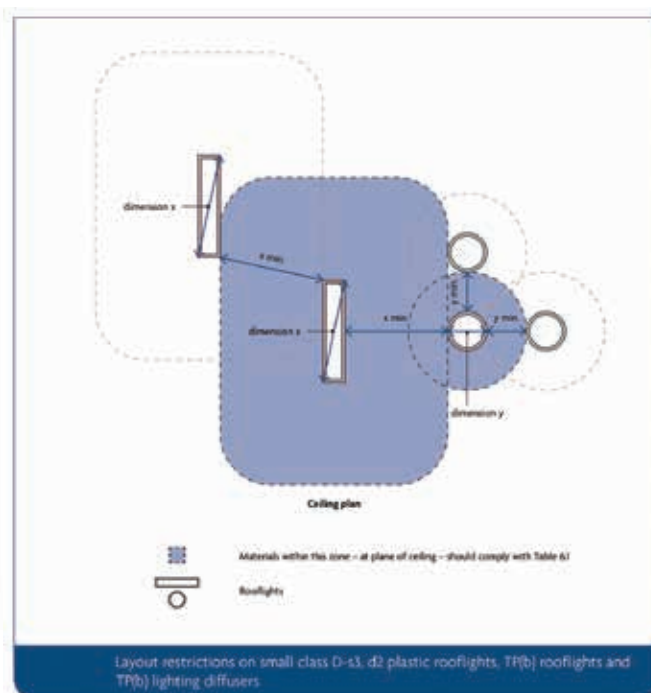
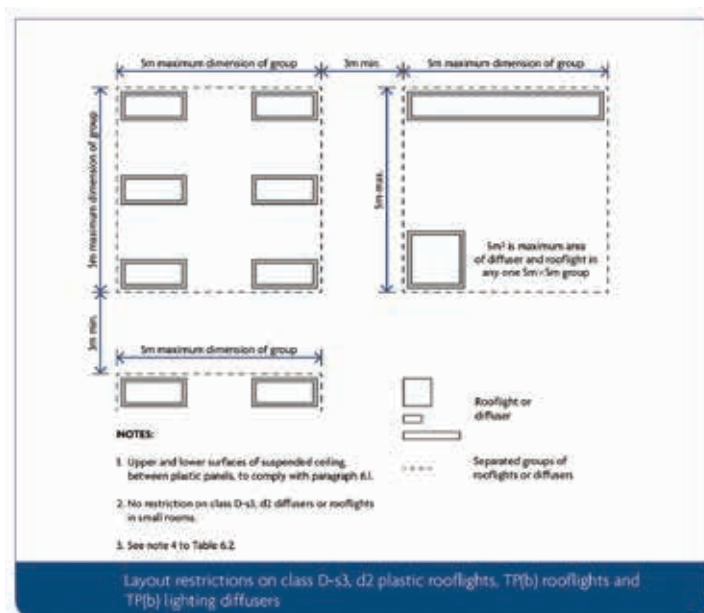
Limited restrictions apply to the use of TP(b) rated diffusers in both rooms and circulation areas, and, as with TP(a) rated diffusers, TP(b) rated diffusers cannot be used at all as part of the ceiling in a protected stairway.

IN ROOMS

- The maximum area of any one TP(b) diffuser must be not more than 1m^2 . So, 600×600 and 600×1200 fittings with TP(b) rated diffusers are permitted.
- The maximum total area must be not more than 50% of the room in question. This means that any commonly used lighting layout would be permissible with TP(b) rated diffusers.
- The distances between fittings must comply with the distances in diagrams 6.2 or 6.3. Again, any commonly used lighting layout would permit the use of TP(b) rated diffusers.
- A minimum space of 3m must be kept between any two $5\text{m} \times 5\text{m}$ groups of light fittings with TP(b) rated diffusers. If this presents a problem in, for example, an open-plan office lit mostly with 600×600 panels the solution could be to selectively introduce a TP(a) rated panel or use a different fitting altogether in the 3m space, such as a downlight.

IN CIRCULATION AREAS

- The maximum area of any one TP(b) diffuser must be not more than 5m^2 . This is enormous, so any commonly used size of fitting would be permitted.
- The maximum total area of TP(b) rated material must be not more than 15% of the circulation area in question. This means that most commonly used lighting layouts would be permissible with TP(b) rated diffusers.
- The distances between fittings with TP(b) rated diffusers must be at least 3m.



LIGHTING TERMINOLOGY

WHAT ARE THE PROS AND CONS OF TPA AND TPB RATED DIFFUSERS?

To achieve a TP(a) rating a diffuser will usually be made of polycarbonate and will be relatively thick, often 3mm or more. This has negative consequences for the efficiency (lumens per watt) of the light fitting for two reasons.

First, polycarbonate has a lower light transmission rate than some other materials, including acrylic (PMMA) and polystyrene (PS).

Secondly, the amount of light lost as it transits through a material is directly proportional to the thickness of the material, so, if other factors are all equal, thinner diffuser materials result in greater efficiency.

TPA V TPB – A SUMMARY

On the great majority of lighting projects recessed fittings with TP(b) rated diffusers are a legitimate and responsible choice.

Fittings with TP(a) rated diffusers can be used in a few additional circumstances, but in the great majority of situations their use is not required and the additional expenditure and potential loss of efficiency has no cost justification.

Some lighting manufacturers, including NVC, offer a range of LED panels with a choice of TP(a) and TP(b) ratings. By using such manufacturers and following their advice in product selection contractors can be confident they are using the most cost-effective solution while maintaining strict compliance with the UK building regulations.

WHAT IS THE DIFFERENCE BETWEEN TPA/TPB AND FIRE RATED?

TP(a)/TP(b) relates to the rating of the material from which a lighting diffuser, when it is part of the ceiling, must be made. It is important in “buildings other than dwellings” and its purpose is to restrict the spread of fire horizontally across a ceiling.

“Fire Rated” is completely different. This refers to light fittings that are recessed into a ceiling that is itself a barrier to the spread of fire vertically from one floor in a building to the one above and which may also endanger fire and rescue personnel if it collapses quickly in the event of a fire.

A fire-rated downlight could, in theory, include TP(b) rated materials, and an LED panel with a TP(a) rated diffuser will almost certainly not be “Fire Rated”.

LIGHTING TERMINOLOGY

EXPLANATION OF SYMBOLS



CE marked



Class I rated



Class I rated



Compliant for use on Enhanced Capital Allowance (ECA) scheme



High quality ENEC approved LED driver



Protected against 5 joules impact. Equivalent to impact of 1.7kg mass dropped from 300mm above impacted surface.



Protected against 10 joules impact. Equivalent to impact of 5kg mass dropped from 200mm above impacted surface.



Protected against 20 joules impact. Equivalent to impact of 5kg mass dropped from 400mm above impacted surface.



Protection against solids larger than 12.5mm.
No protection against liquids.



Protection against solids larger than 1mm.
No protection against liquids.



Protection against solids larger than 1mm.
Protection against splashed liquids.



Limited protection against dust ingress (no harmful deposit). Protection against splashed liquids.



Limited protection against dust ingress (no harmful deposit). Protected against low pressure water jets from any direction (Limited ingress permitted).



Totally protected against dust ingress. Protected against low pressure water jets from any direction (Limited ingress permitted).



Totally protected against dust ingress. Protected against high pressure water jets from any direction (Limited ingress permitted).



Totally protected against dust ingress. Protected against short periods of immersion in water.



Totally protected against dust ingress. Protected against long, durable periods of immersion in water.



TP(a) rated diffuser material



TP(b) rated diffuser material



WEEE (Waste of Electrical and Electronic Equipment recycling)



CRI(Colour Rendering Index) >70



CRI(Colour Rendering Index) >80



CRI(Colour Rendering Index) >90



CCT (Correlated Colour Temperature) = 3000K



CCT (Correlated Colour Temperature) = 4000K



CCT (Correlated Colour Temperature) = 5000K



CCT = 3000K or 4000K, selected on product



CCT = 4000K or 5000K, selected on product

THE POWER OF TRUSTED BRANDS



THE BENEFITS OF LED LIGHTING



Improved quality, efficiency and performance



Instant on flicker free light.



Energy saving of up to 93%.



Easy installation and retrofitting - 1:1 replacement for traditional products.



Environmentally friendly - LEDs do not contain any harmful materials, making them easier to dispose of and give out no UV or IR emissions.



A quick initial payback on investment.



Ongoing long-term energy and cost savings for your business.



LEDs last significantly longer than traditional lamps, so maintenance costs are significantly reduced.

NOTES

NOTES

NOTES

23 BRANCHES ACROSS IRELAND

Kellihers Electrical
BALLYMOUNT
M50 Business Park,
Ballymount Rd Upper,
Dublin 12
01 4566717

Kellihers Electrical
SANDYFORD
Unit E3, Three Rock Rd,
Sandyford Industrial
Estate, Dublin 18
01 2952011

CT Electric
ATHLONE
Unit 3 Daneswell
Business Park,
Monksland, Athlone
090 6494681

Kellihers Electrical
FINGLAS
Unit 27, North Park,
North Road, Finglas,
Dublin 11
01 8041160

Kellihers Electrical
BRAY
Unit A3,
Old Court Industrial Est.
Boghall Road
Bray, Co. Wicklow
01 204 2670

Kellihers Electrical
CROKE PARK
Unit G2 Croke Park
Industrial Estate,
Russell Street, Dublin 1
01 8554704

Kellihers Electrical
DUNDALK
Ard Easmuinn Road,
Dundalk,
Louth
042 9327854

Kellihers Electrical
NAAS
Unit A1, Toughers
Industrial Estate,
Newhall, Naas, Kildare
045 447860

Kellihers Electrical
PORTLAOISE
Clonminam Industrial
Estate, Portlaoise,
Laois
057 8664660

Kellihers Electrical
CORK- TRAMORE ROAD
Tramore Road,
Cork
021 4704100

Kellihers Electrical
KILKENNY
Unit 11A, Loughboy
Industrial Estate,
Kilkenny
056 7750410

Kellihers Electrical
WATERFORD
Tramore Road,
Waterford
051 377755

Kellihers Electrical
TRALEE
Ballymullen,
Tralee,
Kerry
066 7145300

Kellihers Electrical
KILLARNEY
Ross Road,
Killarney,
Kerry
064 6633985

Kellihers Electrical
LIMERICK
Dock Road,
Limerick
061 417442

Kellihers Electrical
CORK- EASTGATE
Units 31-32 East Gate
Drive, Eastgate,
Little Island, Cork
021 4296240

Kellihers Electrical
CORK- MALLOW ROAD
North Point Business
Park, Mallow Road,
Cork
021 4932300

Kellihers Electrical
CELBRIDGE
Unit G2, M4 Business Park
Celbridge
Co. Kildare
016544260

CT Electric
BALLINA
Unit 7 Moyvalley
Business Park,
Ballina, Mayo
096 60420

CT Electric
SLIGO
Finisklin Industrial
Estate,
Sligo
071 9145068

Kellihers Electrical
ENNIS
Unit 9 Quinn Road
Business Park, Ennis,
Clare
065 6844233

CT Electric
GALWAY
Sean Mulvuy Road,
Galway
091 745300

CT Electric
CASTLEBAR
Castlebar Industrial
Estate, Castlebar,
Mayo
094 9023650

