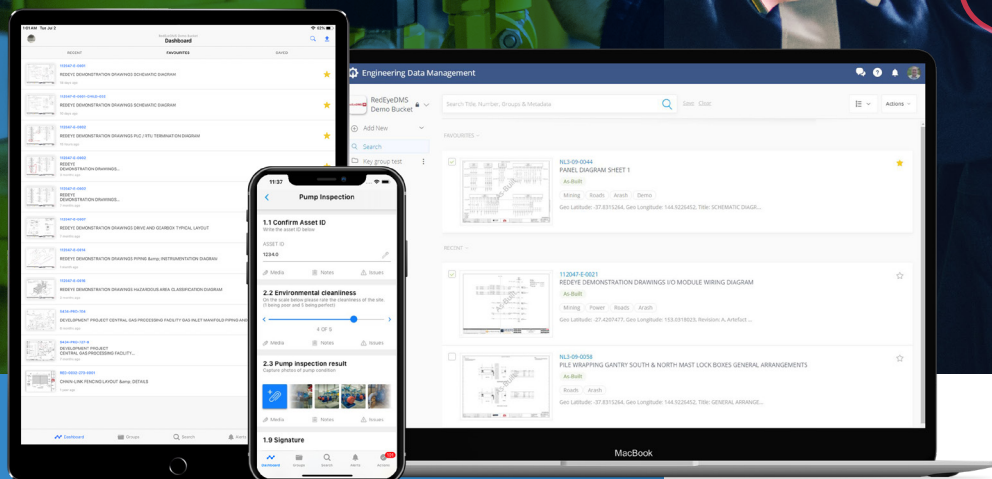




# Workforce Management Solutions

[www.redeye.co](http://www.redeye.co)



Available Usable Valuable

**Compliant & secure cloud workforce management software for field operations with access to your data anywhere, anytime.**

A **digital ecosystem** powering the **largest mining operation** in Turkey, that enabled **22x faster data management activities**.

**At RedEye, we're committed to keeping the world's critical infrastructure running. It's why leading organizations all over the world trust us to help manage more than \$250bn in equipment globally.**

Our SaaS solutions mobilize your workforce for real-time operations management across the Power and Water, Mining and Petroleum, Renewable Energy, Defence and Government and Healthcare industries worldwide. Providing access to current data and insights for optimum and efficient equipment data management work, RedEye gives you control of your IP, ensures regulatory data compliance and helps you manage risk to ensure the safety of your people.

RedEye's purpose-built workforce management cloud solutions for equipment owners and critical infrastructure operators give your personnel, contractors and sub-contractors access to relevant information to plan and execute safe maintenance operations anywhere, from any device, at any time.



**RedEye WFM**

# Compliant and Secure Workforce Management Systems



"It's easy and fast to implement. Configuration is quick, the learning curve is low and with access for mobile and any web portal, it meant that teams could access information from any location"

**John Ebbett,**  
Project Director, ÇSEP

## Plan, schedule and execute safe maintenance work with real-time accuracy

RedEye WFM mobilizes your workforce putting the data and insights your teams need in the palm of their hands. Scope and plan maintenance work, attribute, store and edit relevant equipment data and engineering drawings in the one central location, ensuring safe and compliant execution of field work and equipment maintenance.

Delivering fast and easy access to correct equipment data and engineering drawings means users can search, manage and mark up engineering drawings linking them to the equipment, jobs, people and locations for safe and efficient work execution, minimizing downtime and rework.

"When our teams were geographically disbursed across the world, everyone had access to the information as it was being created and reviewed."

**John Ebbett,**  
Project Director, ÇSEP

## An secure interconnected digital ecosystem

RedEye integrates with your existing organizational infrastructure to power a digital ecosystem that can deliver data and insights for precise decision-making and efficient workforce management.

RedEye's cloud and mobile based technology platforms integrate with, complement and extend our clients' existing ERP, EAM, GIS, Safety and other core business systems. We also partner with leading technology companies including Microsoft, IBM, ESRI, AWS and work with global and specialist systems integrators and consulting firms including KPMG to extend our reach and value globally.

Integration with Microsoft Office365 allows you to store, edit and collaborate all equipment documentation such as instructions, permits, manuals, procedures and test sheets in Microsoft Office365 formats from within your RedEye platform. Not only can you access the latest version of the engineering drawings, 3D models and data with certainty, but you can also view and edit any associated documentation from the same location.



# Real-time field equipment management from the **palm of your hand**

9:41

< Pump Inspection

**1.1 Confirm Asset ID**  
Write the asset ID below

ASSET ID  
1234.0

Media Notes Issues

**2.2 Environmental cleanliness**  
On the scale below please rate the cleanliness of the site.  
(1 being poor and 5 being perfect)

< ————— >  
4 OF 5

Media Notes Issues

**2.3 Pump inspection result**  
Capture photos of pump condition

+ [Photo 1] [Photo 2] [Photo 3] [Photo 4]

Media Notes Issues

**1.9 Signature**

< Back 1/12 Next >

## Work

Plan, schedule, assign or create ad-hoc work for field staff and contractors using standardized forms and work instructions

## Approvals

Receive real-time feedback from the field with reviews and approvals, ensuring that work quality and business processes are maintained

## Issues

Identify, raise and prioritize issues with attached photos, video, audio and notes, associated to specific equipment and locations

## Attributes

Create and update custom attributes for equipment and issues with a full audit history including geo tagging and timestamps

## Equipment

Create equipment and locations in bulk or ad-hoc, associating contextual information like work, issues, attributes attachments and sub-equipment

## Attachments

Associate relevant files and engineering data to work, equipment, locations and issues

**RedEye WFM**

# Compliant and Secure Workforce Management Systems

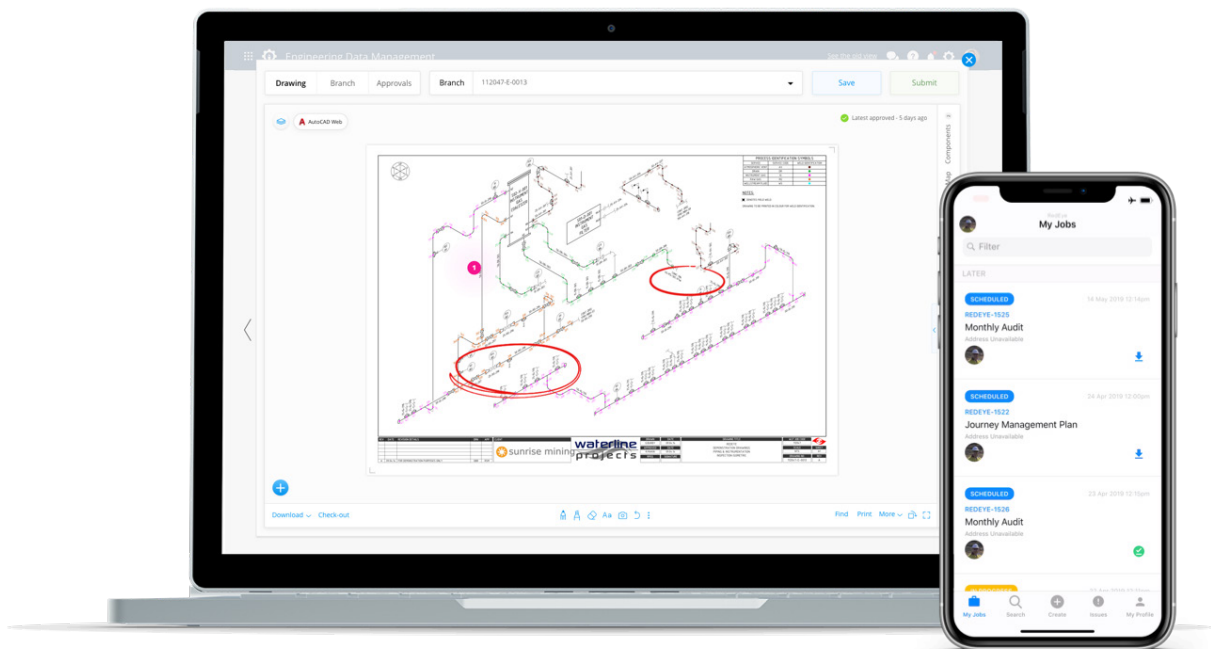
“RedEye’s platform has helped us modernise how we deliver engineering solutions. We’re excited by the possibilities that has uncovered.”

**Mark Thompson,**  
General Manager, Ok Tedi

## Delivering the insights you need when you need them the most

RedEye has native iOS and Android apps which allow users to quickly access the platform from their mobile phone, tablet or web browser. This also allows digital redlines, automated workflows, digital signatures, multimedia attachments and more.

Like any popular search engine, RedEye connects you to a network of information. Highly relevant search results are based on more than just document titles. With native file extraction, enhanced manual processes and Optical Character Recognition (OCR), RedEye uses embedded metadata allowing users to filter and set conditions to find relevant results with ease.





## Minimizing risk to help you keep your workforce safe

Ensuring version control offers certainty that anyone accessing equipment data and engineering drawings is referring to the most current information. This allows you to protect your workforce, execute safe maintenance work and minimize the risk of workplace safety incidents or rework.

With a structured and controlled system, you can maintain regulatory data compliance whilst allowing the right people in your organization access to the information they need without wasting time searching for the latest versions. RedEye's workforce mobility solutions provide a platform for safer, faster and more efficient maintenance and response work – keeping your equipment and critical infrastructure operational and minimizing downtime.

**Anagold Madencilik stood up a connected digital platform that linked teams geographically disbursed across the globe with real-time equipment data from the world class \$700m Çöpler Gold Mine**





# About RedEye

RedEye is a technology company founded in 2012. Our vision is to make the world's critical infrastructure safer, easier and more efficient to operate and maintain. Today RedEye has six offices globally and helps our clients manage over \$250 Billion in large complex equipment and critical infrastructure.

Our Software as a Service (SaaS) solutions including our engineering data management, equipment and work management, bushfire risk management and digital twin solutions and our technology, process optimization and change management consulting services are purpose-built for equipment owners.

RedEye partners with the world's leading equipment owners in utilities, resources, government, defense, healthcare and infrastructure to enable digital transformation in digital engineering, digital twin, equipment management, analytics and bushfire risk management by making their equipment data more available, usable and valuable.

RedEye's cloud and mobile-based technology platforms integrate with, complement and extend our clients' existing ERP, EAM, GIS, Safety and other core business systems.

RedEye partners with leading technology companies including Microsoft, IBM, ESRI and AWS. We also partner with global and specialist systems integrators and consulting firms including KPMG to extend our reach and value globally.

RedEye's team and partners have developed deep domain and subject matter expertise working with numerous equipment owners and critical infrastructure operators and are available to share best practice solutions, knowledge and processes.

To find out more about digital equipment data management solutions visit [www.redeye.co/en-us/oil-and-gas](http://www.redeye.co/en-us/oil-and-gas).

**RedEye, helping to manage and protect over \$250 Billion in equipment globally**

**BHP**

**OK TEDI MINING**

**anagold**  
INFRASTRUCTURE

**BMA**  
BHP Billiton Mitsubishi Alliance

**THERMAL ENERGY CORPORATION**

**Seattle Public Utilities**

**LAS VEGAS VALLEY WATER DISTRICT**

**SOUTHERN NEVADA WATER AUTHORITY**

**alintaenergy**

**snowyhydro**

**SA Power Networks**

**WestSide**

**VEOLIA**

[redeye.co/en-us/oil-and-gas](http://redeye.co/en-us/oil-and-gas)

Available Usable Valuable

Copyright © 2021 RedEye Apps

