

Wednesday
3
February
2021

Maritime Spatial Planning Challenge Simulation Platform

dr. Harald Warmelink | www.mspchallenge.info

Active Layers

Expand all Hide all Clear all

☒

Country Info

☒

Rivers

☒

EEZ

☒

Bathymetry

ⓘ

×

×

×

×

×

315km (170.09nm)

DISCOVER YOUR WORLD

[HOME](#) > [ABOUT US](#)

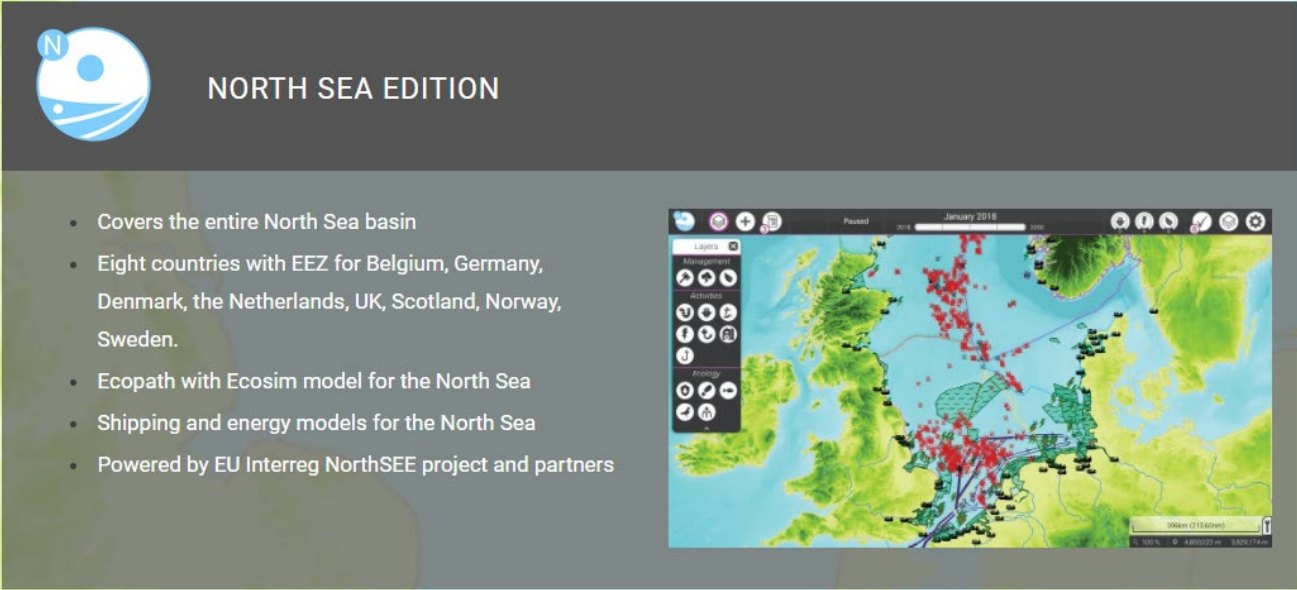
About us

Breda University of Applied Sciences is a medium-sized, government-funded higher education institute. More than 7,000 Dutch and international students from some 100 countries are studying at our institute. We offer bachelor's and master's programme at professional ('hbo') and academic ('wo') level in the domains of Games, Media, Hotel, Facility, Logistics, Built Environment, Tourism and Leisure & Events.

www.buas.nl

DISCOVER YOUR WORLD

Live demo (see webinar replay)

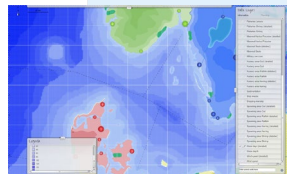


NORTH SEA EDITION

- Covers the entire North Sea basin
- Eight countries with EEZ for Belgium, Germany, Denmark, the Netherlands, UK, Scotland, Norway, Sweden.
- Ecopath with Ecosim model for the North Sea
- Shipping and energy models for the North Sea
- Powered by EU Interreg NorthSEE project and partners

The screenshot displays a map of the North Sea basin with various data layers. The map shows the coastline of the North Sea, with red dots indicating shipping routes and green areas representing land. The interface includes a sidebar menu with options like 'Layers', 'Management', 'Activities', 'Ecology', and 'Ecosystems'. The map is titled 'January 2018' and shows a 'Paused' status. The map scale is 300km (1:10,000,000).

Evolution of the MSP Challenge simulation platform



2011 MSP
Planning
Challenge
original (v1)



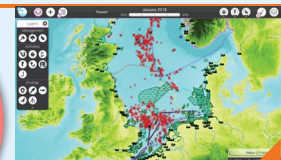
2013 MSP
Challenge 2050
(v2)



2016 – now
MSP Challenge
board games



2015 Start MSP
Challenge (v3)
and Simulation
Platform (v4)



2018 MSP
Challenge North
sea, Baltic sea
and Clyde
editions



EUROPEAN UNION



2020 Digitwin,
Community,
Adriatic sea ed.
Simulations,
VR/AR



Wednesday
3
February
2021

Try it out yourself!

www.mspchallenge.info

dr. Harald Warmelink | warmelink.h@buas.nl

315km (170.09nm)

DISCOVER YOUR WORLD