



OPT/NET

Launch mission critical  
Artificial Intelligence

[www.opt-net.eu](http://www.opt-net.eu)

OPT/NET





*We build AI-driven platforms that help our clients extract time-critical insights from massive volumes of data*

Our patented proprietary process allows our platforms to autonomously detect, cluster, label and recognise complex patterns from any time-series data streams in real time

# LEGACY

2008



Started 10+ years ago as an open source network discovery/management tool: "NG-NetMS"

200K+  Rating: ★★★★★

2013



Infused space worthy tech from the European Space Agency (ESA) through technology transfer programme

TRL: 8

2015



Collaborated with University of Amsterdam (leading AI research institute) to develop AI module

Top 5 ranked AI institute in Europe

2018



After 10 years of R&D, launched as Commercial Product  
OptOSS AI: An AIOps product for the Telecom Industry

Patented AI approach (EU Granted, US Granted)

# OUR EXISTING PRODUCTS



## OptOSS AI

AI-Driven Operator  
Support System



### OptOSS AI GUI

## TSAR AI

Geospatial Data  
analytics platform



### TSAR AI GUI

## MONITORED AI

Sensor + Geospatial Data  
Analytics Platform



### MONITORED AI GUI

*All products built on OPT/NET's core patented anomaly detection technology with use of the 'know-how' and funding from ESA in scope of Technology Transfer Programme & secured past and current EC grants*



# IMPACT - AI FOR GOOD WITH OPT/NET



Emergency M. -  
Rapid Flood Mapping



100X  
faster



Precision Farming -  
Yield/Moisture



20%  
productivity increase



Illegal fishing -  
Dark Vessel Detection



10 x  
better detections



OPT/NET



# GOLDENEYE:

## EU H2020 funded project

VTT coordinated **10.7 M€** H2020 Innovation Action -project

Project duration: **3 years**

Consortium of **16 partners** including:

3 Mining solution providers

7 Sensor companies

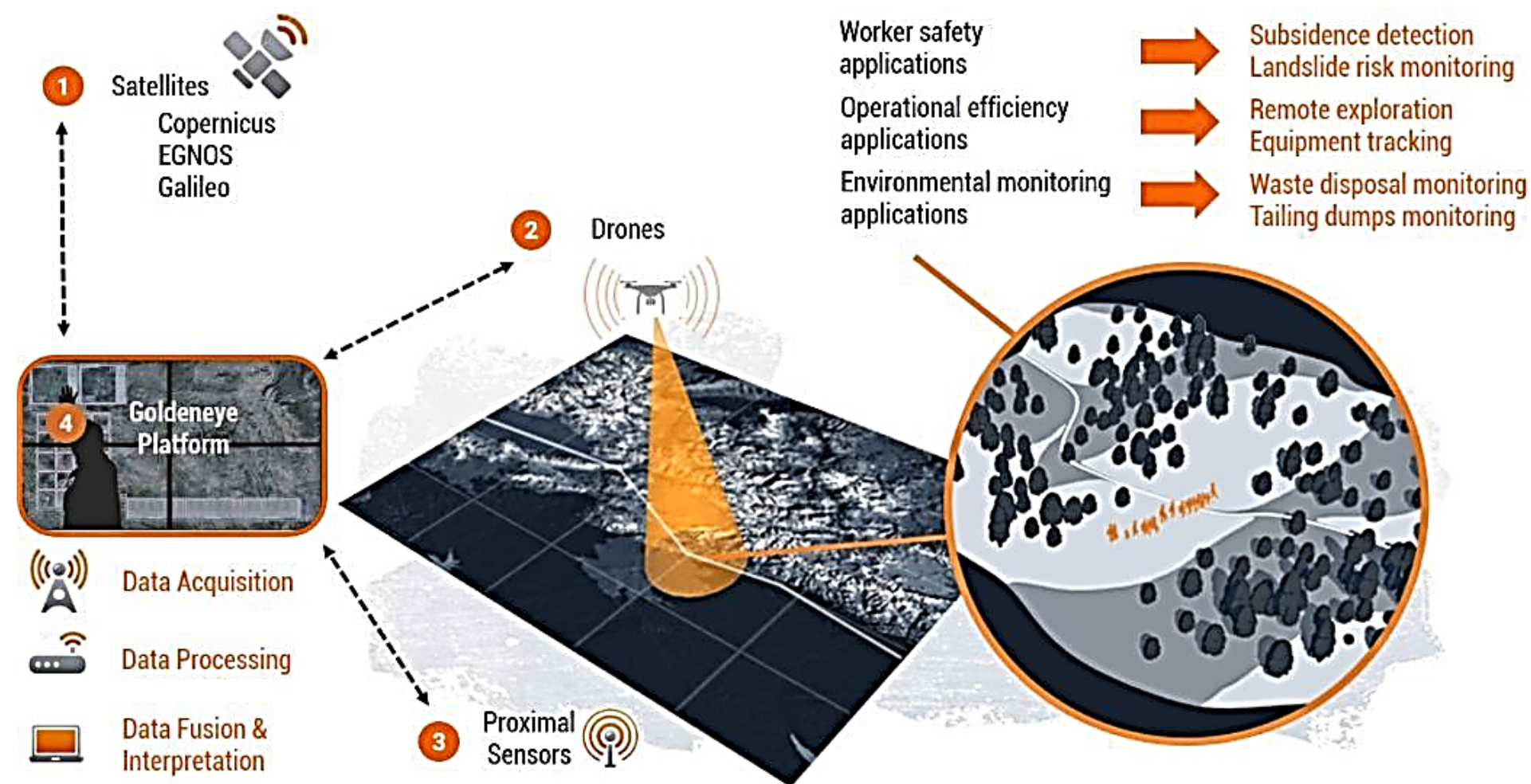
4 Mining sites

3 Universities

1 Research Institute (Coordinator)

### Project:

- Develops new sensing technologies and data integration
- Provides new data for the trial mine sites
- Provides an analysis platform to add the new and existing data of the trial mine sites
- Provides a cloud solution for the mining customers and authorities to extract information of the mining sites



**GOLDENEYE**



This project has received funding from the European Union's Horizon 2020 research and innovation programme under grant agreement No [869398]



### PROJECT CONSORTIUM





# GOLDENEYE project

## AIM:

Development of multi-source **EARTH OBSERVATION DATA** platform to **IMPROVE**

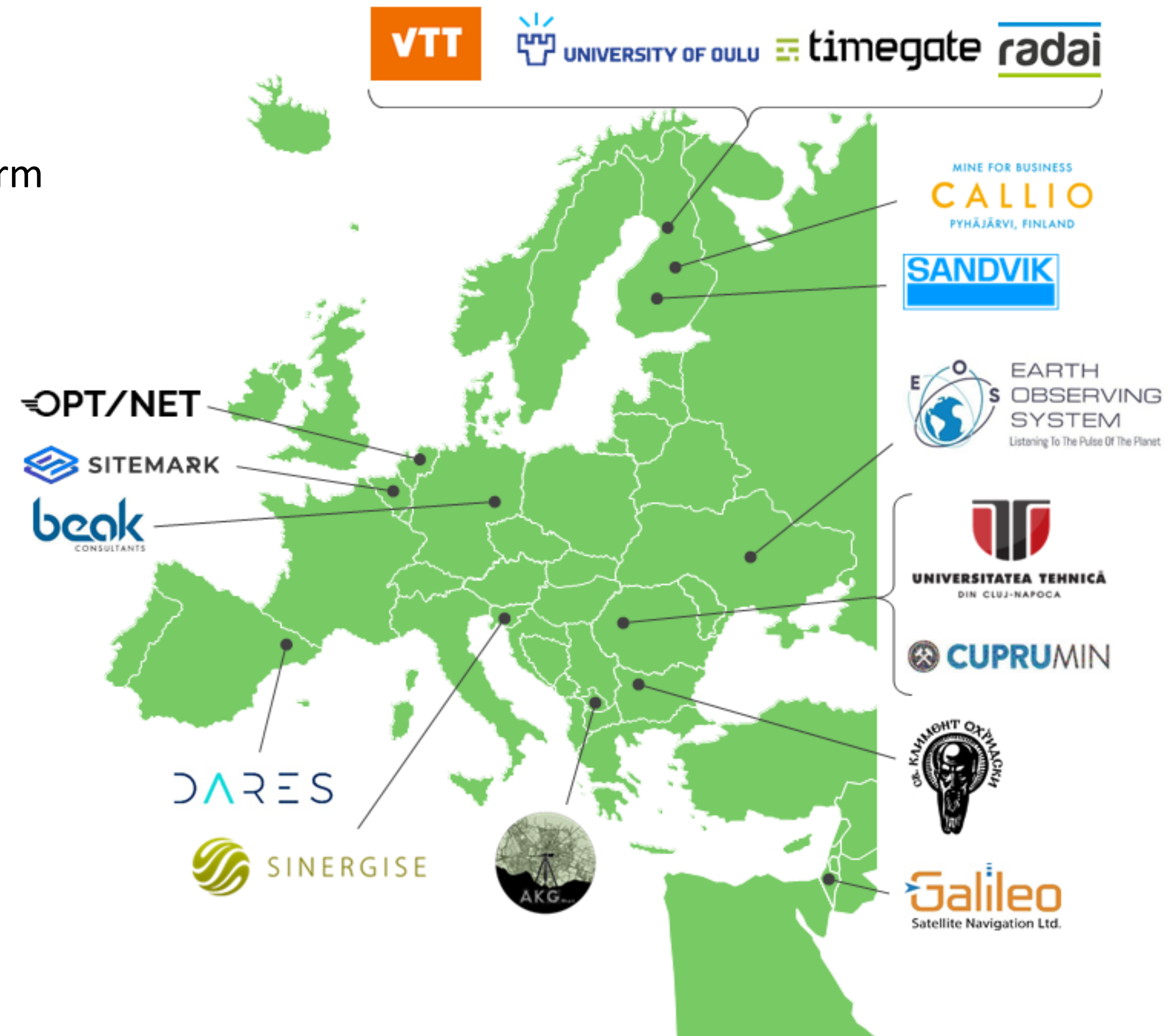
- Mine safety and environmental monitoring,
  - **Environmental footprint** (closure and post closure)
  - **Acid and heavy metal leaching** (effects on vegetation)
- Profitability

Platform is a **TOOLKIT** for the mines to **MONITOR**:

- OPEN PIT mine slope stability
- Mine waste pile stability
- Mine **tailings pond stability**
- Underground mine activity

Platform is a **TOOLKIT** for the mines to **EXPEDITE**:

- Mineralogical mapping of mine site ground surfaces
- Mineralogical analysis of drill cores for exploration and ore processing
- Mineralogical analysis of underground mine shafts





European Commission



# CENTURION - H2020

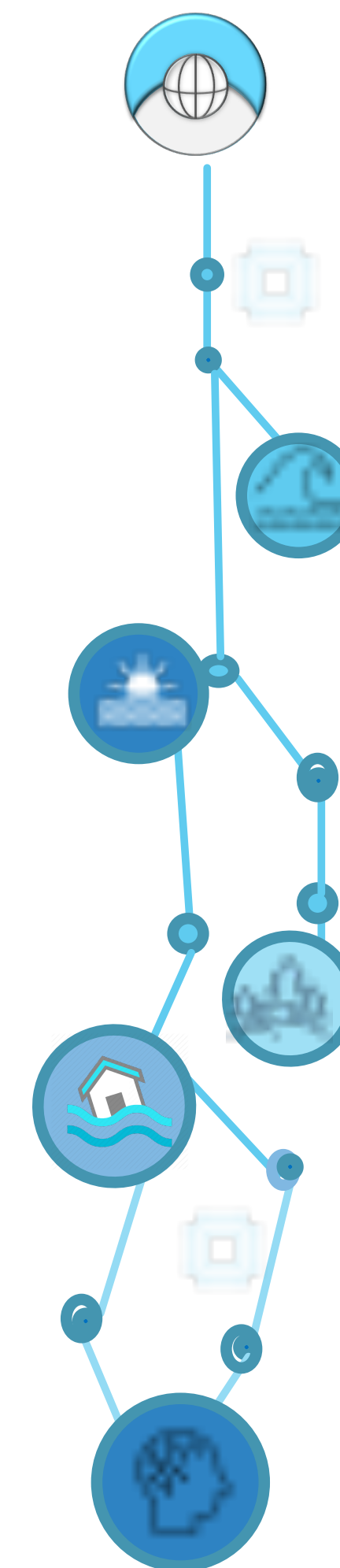
*"Currently, Earth observation programmes collect more data than humans can process.*

*With the CENTURION project, we will solve this challenge by developing, demonstrating, and operationalising a break-through platform for Big Data and AI - going far beyond the state-of-the art.*

*By combining and advancing ground-breaking European innovations in **spatio-temporal data-cubes & AI**, we aim to unleash Copernicus data use in support of myriad professional and research use cases.*

*This new platform will deliver "Big Data Analytics at Your Fingertips" to businesses, governments and for larger EO and non-EO markets."*

## Project start date: 1 May, 2021



inlecom

OPT/NET

rasdaman  
raster data manager

JACOBS  
UNIVERSITY



CloudFerro



SLTN  
interaccess

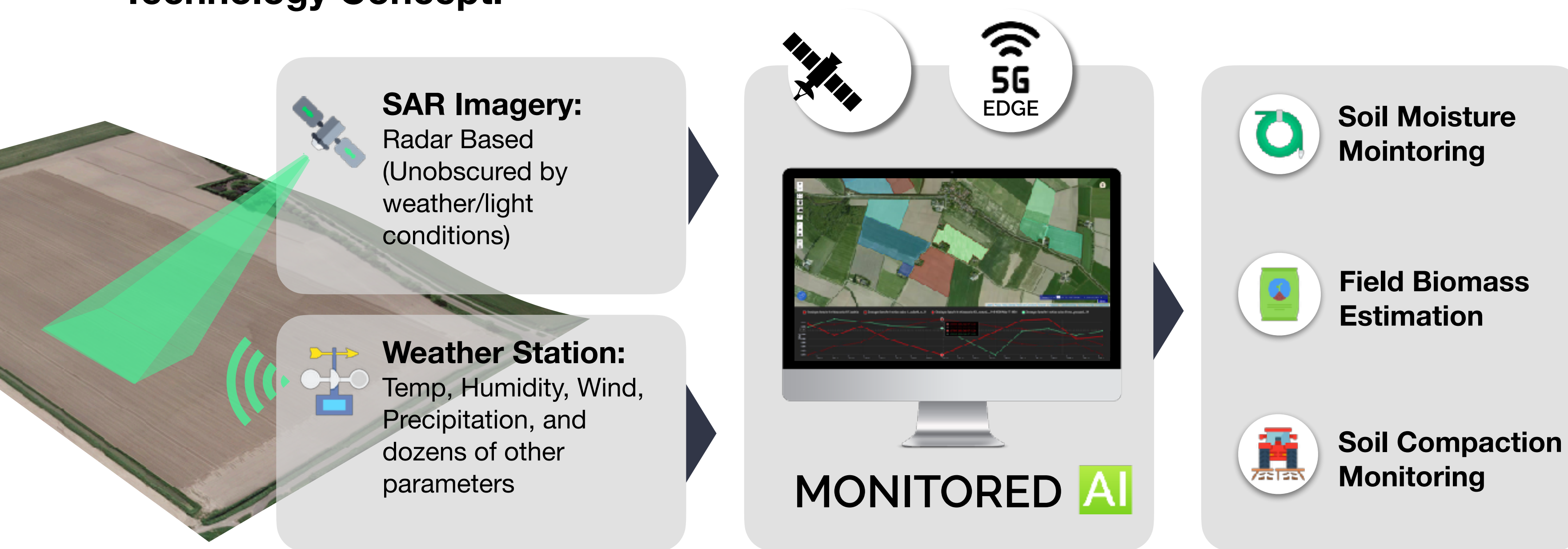
JKI  
Julius Kühn-Institut



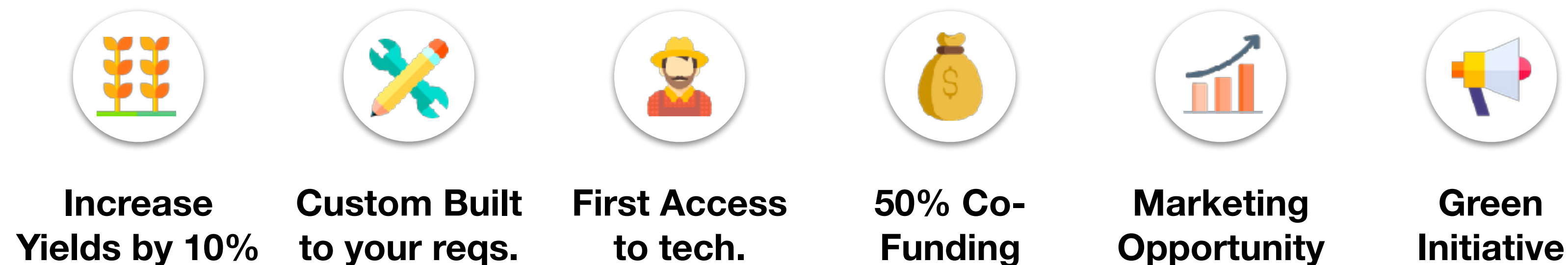
# FUTURE GEOSPATIAL

Smart Agriculture - 5Groningen Demonstration Project continuation

## Technology Concept:



## What the Consortium Offers:



Support -   

Analytics - 

Go2Market - 

Infrastructure -  

Agriculture - **Join us!**





# DO YOU WANT TO GET INVOLVED?

## We are looking for...



### **Users and Partners!**

Share your AI idea with us



### **Colleagues!**

Tell us how you can help



### **Investors!**

upcoming Series-A



**info@opt-net.eu**

[www.opt-net.eu](http://www.opt-net.eu)







Democratising Artificial Intelligence

[info@opt-net.eu](mailto:info@opt-net.eu)

[www.opt-net.eu](http://www.opt-net.eu)

