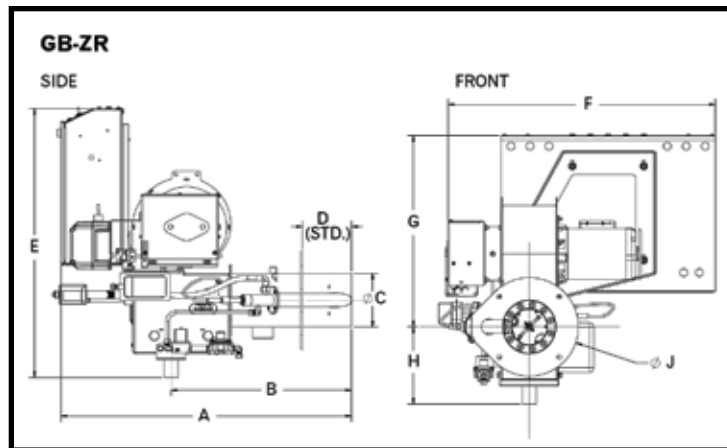
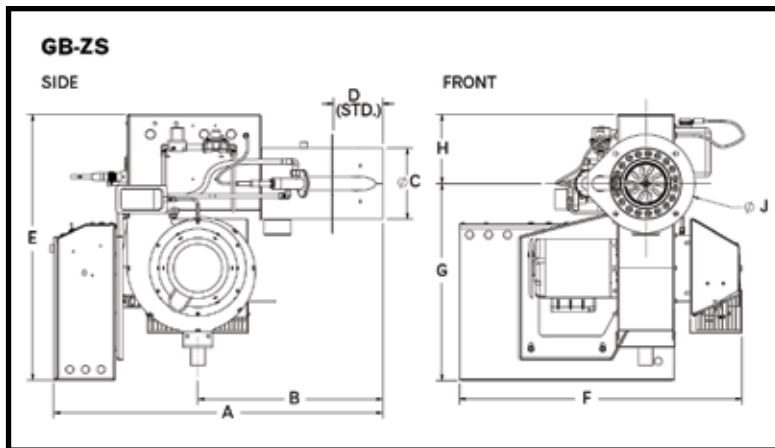


# GB-ZS/ZR™ Package Burner



## Technical Data Sheet



Model	A (ZS)	A (ZR)	B (ZS)	B (ZR)	C	D	E (ZS)	E (ZR)	F	G (ZS)	G (ZR)	H (ZS)	H (ZR)	J	MBH <sup>1</sup> Max	BHP <sup>1</sup> Max	Furnace Pressure <sup>2</sup> (in WC)	Blower Motor HP	Std. Gas Train Size (in)	Required Nat. Gas <sup>3</sup> Pressure (in WC)
Z6.0	32.63	32.5	18.5	20.25	6	5.5	28	30	30	22	24.5	6	8.65	11	839	20.0	0.2	0.33	1.25	6.25
Z6.1	32.63	32.5	18.5	20.25	6	5.5	28	30	30	22	24.5	6	8.65	11	989	23.6	0.2	0.33	1.25	7.25
Z6.2	32.63	32.5	18.5	20.25	6	5.5	28	30	30	22	24.5	6	8.65	11	1119	26.6	0.3	0.33	1.25	7.25
Z6.3	32.63	32.5	18.5	20.25	6	5.5	28	30	30	22	24.5	6	8.65	11	1189	28.3	0.4	0.5	1.5	7.34
Z6.4	32.63	32.5	18.5	20.25	6	5.5	28	30	30	22	24.5	6	8.65	11	1959	46.7	0.4	0.5	1.5	7.5
Z8.0	36.75	36.5	24.63	24.25	8	5.5	29.75	31.25	31.5	22	21.25	7.75	10	11	2099	50.0	0.2	0.5	1.5	7.75
Z8.1	36.75	36.5	24.63	24.25	8	5.5	29.75	31.25	31.5	22	21.25	7.75	10	11	2249	53.6	0.2	0.75	1.5	8.25
Z8.2	36.75	36.5	24.63	24.25	8	5.5	29.75	31.25	31.5	22	21.25	7.75	10	11	2519	60.0	0.3	1	2	6.4
Z8.3	36.75	36.5	24.63	24.25	8	5.5	29.75	31.25	31.5	22	21.25	7.75	10	11	2799	66.7	0.3	1.5	2	7.75
Z8.4	36.75	36.5	24.63	24.25	8	5.5	29.75	31.25	31.5	22	21.25	7.75	10	11	3499	83.3	0.3	2	2	8
Z10.0	37.25	37	21.19	23.88	10	5.5	30.19	31.88	31.5	22.38	21.75	7.88	10	13	3799	90.5	0.2	1.5	2	8.75
Z10.1	37.25	37	21.19	23.88	10	5.5	30.19	31.88	31.5	22.38	21.75	7.88	10	13	4599	109.5	0.2	2	2.5	9.42
Z10.2	37.25	37	21.19	23.88	10	5.5	30.19	31.88	31.5	22.38	21.75	7.88	10	13	5249	125.0	0.6	3	2.5	9.5
Z10.3	37.25	37	21.19	23.88	10	5.5	30.19	31.88	31.5	22.38	21.75	7.88	10	13	5319	126.7	0.6	5	3	10.88
Z12.0	37.88	37	21.19	23.88	12	5.5	30.19	32.25	32.5	22.25	21.75	7.88	10.5	15	6299	150.0	0.3	3	3	13.4
Z12.1	37.88	37	21.19	24.25	12	5.5	30.19	32.25	32.5	22.25	21.75	7.88	10.5	15	7349	175.0	0.3	5	3	12.5
Z12.2	37.88	37	21.19	24.25	12	5.5	30.19	32.25	32.5	22.25	21.75	7.88	10.5	15	8400	200.0	0.3	5	3	13.88
Z12.3	37.88	37	21.19	24.25	12	5.5	30.19	32.25	32.5	22.25	21.75	7.88	10.5	15	9000	214.3	0.3	5	3	14

1. Input is based on natural gas at 1,000 BTU/CUFT and 0.60 specific gravity, and elevation of 2,000 ft. or less.  
Consult factory for higher altitudes.

2. If factory pressure exceeds listed values, derate capacity 5% for every 0.2 inW.C. of pressure in excess of stated value.

3. Lower gas supply configurations available.

# GB-ZS/ZR™ Package Burner



## Technical Data Sheet

### GB-ZS/ZR Package Burner.

As The GB-Z Package Burner line provides reliable, efficient, proven performance for your heating needs. Model GB-Z burners will fire natural gas, propane, or other gaseous fuels. The burner head features a nozzle mix combustor for a reliable, robust flame pattern. GB-Z burners are suitable for commercial and industrial firetube and watertube boilers, firebox boilers, thermal fluid heaters and other various process heaters. The GB-Z burner delivers the engineering technology that can only come from the global authority in combustion and environmental solutions - Zeeco.

### Standard Equipment:

- 3450 RPM motor
- Gas electric pilot with transformer
- Burner mounted or remote control panel with signal lights (Power On, Main Fuel, Pilot Fuel, Alarm)
- Combustion air proving switch
- Motor starter
- 120/1/60 control circuit with transformer if required
- Butterfly gas control valve
- High/low gas pressure switches
- Gas shutoff cocks
- Main gas regulator
- Ship loose gas train

Additional Equipment	GB-Z6	GB-Z8	GB-Z8	GB-Z10	GB-Z12	GB-Z12
X-Standard 0-Optional	.0, .1, .2, .3, .4	.0, .1	.2, .3, .4	.0, .1, .2, .3	.0, .1	.2, .3
Flame Safeguard with UV Scanner	X	X	X	X	X	X
Up to 4:1 Turndown on Natural Gas	X	X	X	X	X	X
On-Off with Manual Fixed Air Control	X	X				
Low-Hi-Off with Motorized Gas Valve	0	0	X	X	X	
Full Modulation with Automatic Air Control	0	0	0	0	0	X
Dry Oven and Gasket	0	0	0	0	0	0