

# GB-ZS/ZR™ PACKAGE BURNER



BURNERS | FLARES | THERMAL OXIDIZERS  
VAPOR CONTROL | RENTALS | AFTERMARKET



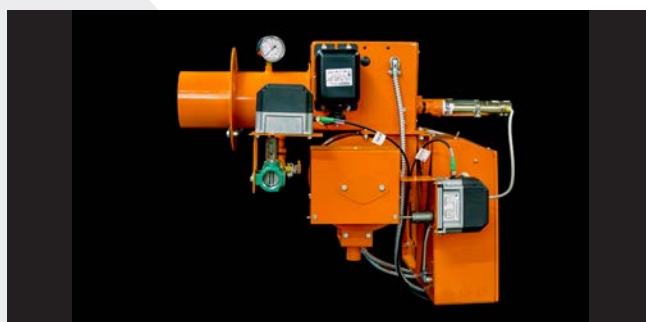
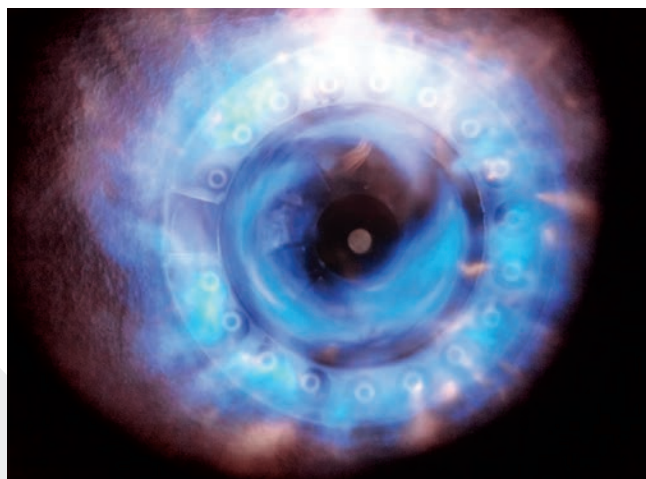
# GB-ZS/ZR PACKAGE BURNER

## GB-ZS/ZR Package Burner.

The GB-Z Package Burner line provides reliable, efficient, proven performance for your heating needs. Model GB-Z burners will fire natural gas, propane, or other gaseous fuels. The burner head features a nozzle mix combustor for a reliable, robust flame pattern. GB-Z burners are suitable for commercial and industrial firetube and watertube boilers, firebox boilers, thermal fluid heaters and other various process heaters. The GB-Z burner delivers the engineering technology that can only come from the global authority in combustion and environmental solutions - Zeeco.

## Standard Equipment:

- 3450 RPM motor
- Gas electric pilot with transformer
- Burner mounted or remote control panel with signal lights (Power On, Call for Heat, Main Fuel, Pilot Fuel, Alarm)
- Combustion air proving switch
- Motor starter
- 120/1/60 control circuit with transformer
- Butterfly gas control valve
- High/low gas pressure switches
- Gas shutoff cocks
- Main gas regulator
- Ship loose gas train



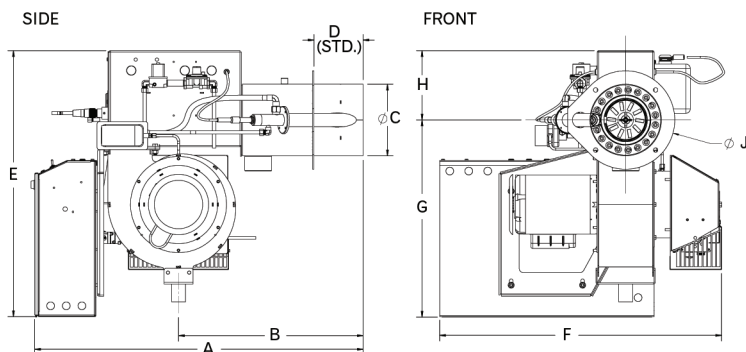
GB-ZS



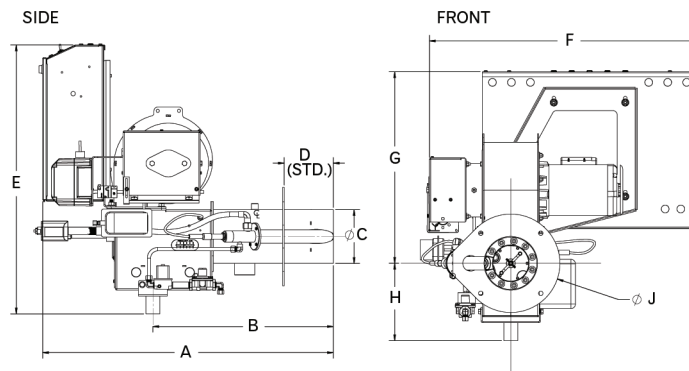
GB-ZR

Additional Equipment	GB-Z6	GB-Z8	GB-Z8	GB-Z10	GB-Z12	GB-Z12
X-Standard 0-Optional	.0, .1, .2, .3, .4	.0, .1	.2, .3, .4	.0, .1, .2, .3	.0, .1	.2, .3
Flame Safeguard with UV Scanner	X	X	X	X	X	X
Up to 4:1 Turndown on Natural Gas	X	X	X	X	X	X
On-Off with Manual Fixed Air Control	X	X				
Low-Hi-Off with Motorized Gas Valve	0	0	X	X	X	
Full Modulation with Automatic Air Control	0	0	0	0	0	X
Dry Oven and Gasket	0	0	0	0	0	0

## GB-ZS



## GB-ZR



Model	A (ZS)	A (ZR)	B (ZS)	B (ZR)	C	D	E (ZS)	E (ZR)	F	G (ZS)	G (ZR)	H (ZS)	H (ZR)	J	MBH Max	BHP Max	Blower Motor HP	Std. Gas Train (ZS)	Required Nat. Gas Pressure (in WC)
Z6.0	32.63	32.5	18.5	20.25	6	5.5	28	30	30	22	24.5	6	8.65	11	839	20.0	0.33	1.25	6.25
Z6.1	32.63	32.5	18.5	20.25	6	5.5	28	30	30	22	24.5	6	8.65	11	989	23.6	0.33	1.25	7.25
Z6.2	32.63	32.5	18.5	20.25	6	5.5	28	30	30	22	24.5	6	8.65	11	1119	23.6	0.33	1.25	7.25
Z6.3	32.63	32.5	18.5	20.25	6	5.5	28	30	30	22	24.5	6	8.65	11	1189	28.3	0.5	1.5	7.34
Z6.4	32.63	32.5	18.5	20.25	6	5.5	28	30	30	22	24.5	6	8.65	11	1959	46.7	0.5	1.5	7.5
Z6.4	32.63	32.5	18.5	20.25	6	5.5	28	30	30	22	24.5	6	8.65	11	1959	46.7	0.5	1.5	7.5
Z8.0	36.75	36.5	24.63	24.25	8	5.5	29.75	31.25	31.5	22	21.25	7.75	10	11	2099	50.0	0.5	1.5	7.75
Z8.1	36.75	36.5	24.63	24.25	8	5.5	29.75	31.25	31.5	22	21.25	7.75	10	11	2249	53.6	0.75	1.5	8.25
Z8.2	36.75	36.5	24.63	24.25	8	5.5	29.75	31.25	31.5	22	21.25	7.75	10	11	2519	60.0	1	2	6.4
Z8.3	36.75	36.5	24.63	24.25	8	5.5	29.75	31.25	31.5	22	21.25	7.75	10	11	2799	66.7	1.5	2	7.75
Z8.4	36.75	36.5	24.63	24.25	8	5.5	29.75	31.25	31.5	22	21.25	7.75	10	11	3499	83.3	2	2	8
Z10.0	37.25	37	21.19	23.88	10	5.5	30.19	31.88	31.5	22.38	21.75	7.88	10	13	3799	90.5	1.5	2	8.75
Z10.1	37.25	37	21.19	23.88	10	5.5	30.19	31.88	31.5	22.38	21.75	7.88	10	13	4599	109.5	2	2.5	9.42
Z10.2	37.25	37	21.19	23.88	10	5.5	30.19	31.88	31.5	22.38	21.75	7.88	10	13	5249	125.0	3	2.5	9.5
Z10.3	37.25	37	21.19	23.88	10	5.5	30.19	31.88	31.5	22.38	21.75	7.88	10	13	5319	126.7	5	3	10.88
Z12.0	37.88	37	21.19	23.88	12	5.5	30.19	32.25	32.5	22.25	21.75	7.88	10.5	15	6299	150.0	3	3	13.4
Z12.1	37.88	37	21.19	24.25	12	5.5	30.19	32.25	32.5	22.25	21.75	7.88	10.5	15	7349	175.0	5	3	12.5
Z12.2	37.88	37	21.19	24.25	12	5.5	30.19	32.25	32.5	22.25	21.75	7.88	10.5	15	8400	200.0	5	3	13.88
Z12.3	37.88	37	21.19	24.25	12	5.5	30.19	32.25	32.5	22.25	21.75	7.88	10.5	15	9000	214.3	5	3	14

## About Zeeco.

With thousands of process installations to our name and more than 20 global locations, Zeeco has earned an enviable reputation for superior engineering, product performance, and professional integrity. After 35 years, we've kept a tight rein on the positive differences that have guided us to become the world leader in advanced combustion and environmental systems, so no matter what hemisphere you operate in, you can rest assured that your project will receive exceptional attention, responsiveness, and service. Let us put our experience to work for you. Call or email us today to learn more about the full line of ZEECO® products and services.



## The Zeeco Difference

By concentrating on what we do best, Zeeco has grown into a worldwide leader in combustion and environmental solutions. We are a privately held company whose ownership stays highly involved in daily operations, with upper management comprised of the world's leading combustion experts.

When you call Zeeco, we answer. When you make a request, you get a quick, efficient response. We are lean and efficient, able to make decisions quickly, without bureaucracy and red tape. Our sales, engineering, and purchasing groups work hand-in-hand to deliver highly competitive quotes and heroic turnaround times. We stand ready and willing to travel anywhere in the world to discuss upcoming projects firsthand, and to ensure that every existing project runs seamlessly.



Visit [zeeco.com/contact](https://zeeco.com/contact) for additional Global Location contact information



Choose to work with our dedicated, flexible, and innovative team, and you won't be disappointed. Call or email us today to request a quote or to learn more about our proprietary combustion systems.

Zeeco Headquarters  
22151 East 91st Street  
Broken Arrow, OK 74014

Learn more at [zeeco.com](https://zeeco.com)

✉ [sales@zeeco.com](mailto:sales@zeeco.com)

☎ +1 (918) 258 8551



REGISTERED  
ISO 9001:2015

Certification applies to  
Zeeco Headquarters.