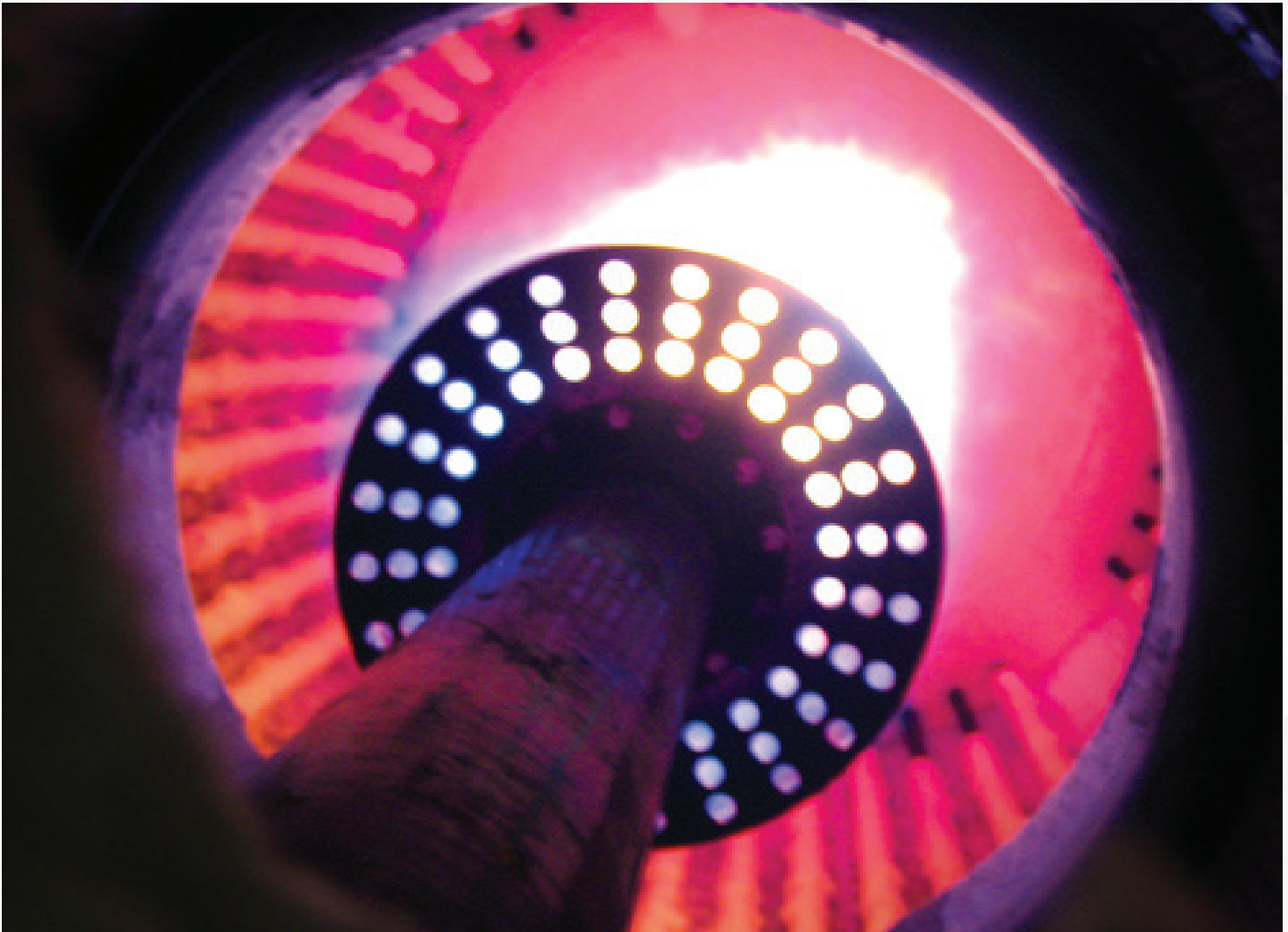


# LOW NO<sub>x</sub> STAGED AIR BURNER

## GB Series



BURNERS | FLARES | THERMAL OXIDIZERS | VAPOR CONTROL | RENTALS | AFTERMARKET



*GB Staged Air Burner*

### **Description**

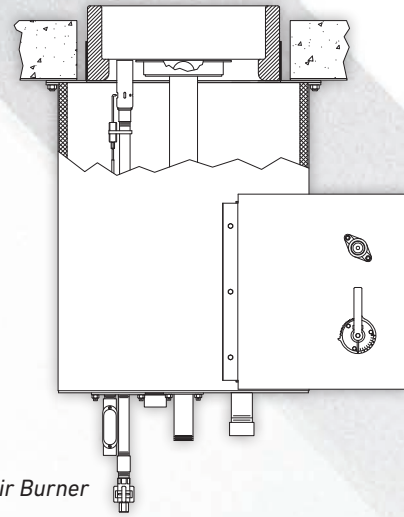
The ZEECO® GB staged air/staged fuel burner is designed with a staged fuel gas tip and a staged air annulus, which utilizes only one gas tip and provides lower NO<sub>x</sub> emissions than conventional raw gas designs. With greater flame stability, the burner provides consistent heat distribution and reduces maintenance costs. This staged air method is designed to offer turndown of 10:1 or greater, which is a drastic improvement over other low NO<sub>x</sub> designs.

### **Technology**

The GB burner utilizes one tip to produce the primary combustion zone and the secondary combustion zone, which produces inert products of combustion that are induced into the staged fuel gas ejected straight up from the center of the gas tip. These products are then induced into the staged fuel gas ejected straight up from the center of the gas tip. Used in conjunction with staged air, a true staged fuel and staged air effect is achieved. The use of one tip allows for lower NO<sub>x</sub> production, vastly increased flame stability, and much greater turndown.

## Design Features

- Stable flame over a wide range of conditions
- Turndown of 10:1 or greater for most cases
- Compact flame shape
- Reasonable cost and great value
- Combustion air is controlled by gears for precise control
- Bearings are used for the combustion air dampers for smooth, precise operation
- Configurations available: plenum mounted or individual windbox
- One (1) primary gas tip with staged fuel gas port
- 310 Stainless Steel (Type HK) gas tips
- Staged air annulus around burner tile assembly



## Design Information

Burner Model .....	GB Staged Air Burner
Fuels .....	Gas Only
Description .....	Staged Air, Round Flame Burner
NOx Reduction Method .....	Staged Air
Predicted NOx Emissions Range (Natural Draft) .....	35 to 70 ppmv
Predicted NOx Emissions Range (600° F Air Preheat) .....	50 to 90 ppmv
Combustion Air Induction .....	Natural, Forced, Induced, & Balanced Draft
Mounting Options .....	Up-fired, Side-fired, and Down-fired
Natural Draft Heat Release Range .....	1 to 20 MMBtu/hr [0.293 to 5.860 MW]
Forced Draft Heat Release Range .....	1 to 50 MMBtu/hr [0.293 to 14.650 MW]
Turndown .....	10:1
Typical Excess Air Range .....	10 to 25%



## The Zeeco Difference

By concentrating on what we do best, Zeeco has grown into a worldwide leader in combustion and environmental solutions. We are a privately held company whose ownership stays highly involved in daily operations, with upper management comprised of the world's leading combustion experts.

When you call Zeeco, we answer. When you make a request, you get a quick, efficient response. We are lean and efficient, able to make decisions quickly, without bureaucracy and red tape. Our sales, engineering, and purchasing groups work hand-in-hand to deliver highly competitive quotes and heroic turnaround times. We stand ready and willing to travel anywhere in the world to discuss upcoming projects firsthand, and to ensure that every existing project runs seamlessly.

Zeeco Headquarters  
22151 East 91st Street  
Broken Arrow, OK 74014

Learn more at [zeeco.com](http://zeeco.com)

✉ [sales@zeeco.com](mailto:sales@zeeco.com)

☎ +1 (918) 258 8551



REGISTERED  
ISO 9001: 2015

Certification applies to  
Zeeco Headquarters.



Visit [zeeco.com/contact](http://zeeco.com/contact)  
for additional Global Location  
contact information

**GO**   
**ZEECO**

Choose to work with our  
dedicated, flexible, and  
innovative team, and you won't  
be disappointed. Call or email  
us today to request a quote or to  
learn more about our proprietary  
combustion systems.