



GB Package Burner

Lower Emissions and Advanced Technology.

The ZEECO® GB staged air/staged fuel burner is designed with a staged fuel gas tip and a staged air annulus, which utilizes only one gas tip and provides lower NOx emissions than conventional raw gas designs. With greater flame stability, the burner provides consistent heat distribution and reduces maintenance costs. This staged air method is designed to offer turndown of 10:1 or greater, which is a drastic improvement over other low NOx designs.

Burner Features and Benefits

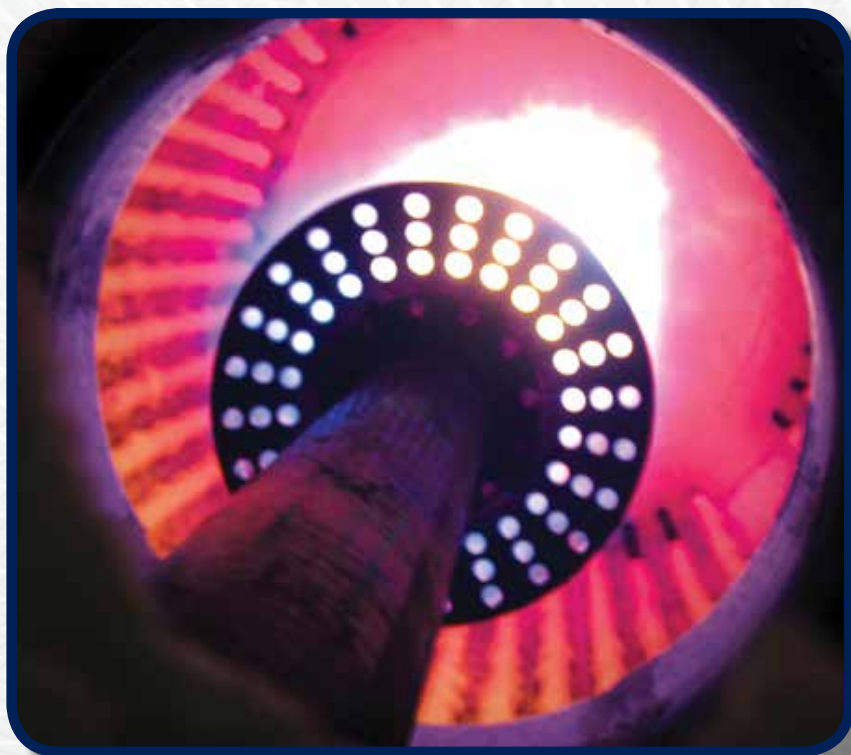
- Compact and versatile design for easy installation
- Safe, reliable, easy to set up, simple to maintain
- Fires natural gas, LP gas
- Efficient performance with excess air range from 10% to 20%
- High turndown, quiet operation
- Complete integrated system with automatic flame monitoring and shut-off, control panel, and combustion air fan

Standard Equipment

- Blower/Motor
- Combustion Air Proving Switch
- Ignition Transformer with pilot assembly
- Blower Inlet Silencer

Optional Equipment

- All UL listed Burner Management Systems
- O2 Trim
- Variable Frequency Drive (VFD)
- Remote control panels
- Burner Management System (BMS) Siemens LMV51 or Autoflame Mini Mark 8
- NEMA 1 Control Panel with Power On switch and indicator lights for power, pilot, main flame, and flame failure
- Parallel Positioning System with air and fuel actuators
- Pilot Train - includes regulator, solenoid valve, and manual valve
- Main Fuel Train - includes ventless regulator, ventless dual block main gas shutoff valves, high and low pressure switches, two manual gas valves





BURNERS



FLARES



INCINERATORS



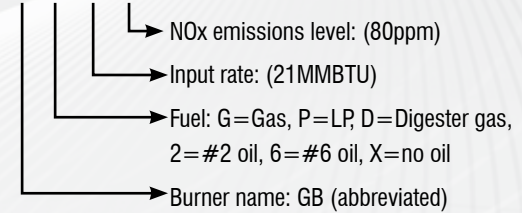
PARTS & SERVICE

GB Package Burner

Burner model: GB Package Burner
 Heat release range: 4.2 MMBtu/hr to 29.4 MMBtu/hr (1.2 MW to 8.6 MW)
 Fuel Gas: Natural Gas, LPG, or other upon request
 Turndown: 10:1 on gas
 Excess air range: 10% to 20%
 Blower mounting options: above or floor mounted
 Burner mounting options: Horizontal, Vertical, Up, or Down Firing

Burner Model Naming Convention

GB-GX-210-80



Burner Selection

Burner Model	Frame Size	Burner Size		Boiler		Blower Motor HP	Furnace Pressure [Inch W.C.]	Furnace Pressure [mBar]	Required Min Gas Pres. [PSI]	Required Min Gas Pres. [mBar]
		MMBTU HHV	MW/h LHV	HP 80% Eff.	ton/h 90% Eff.					
GB-GX-042-80	1	4.2	1.10	100	1.60	2	1	2	2.00	138
GB-GX-053-80		5.3	1.38	126	2.01	2	1	2	2.00	138
GB-GX-063-80		6.3	1.64	150	2.39	2	1	2	2.00	138
GB-GX-084-80		8.4	2.19	200	3.19	3	1	2	2.00	138
GB-GX-105-80	2	10.5	2.74	250	3.99	3	1	2	2.00	138
GB-GX-126-80		12.6	3.29	300	4.79	5	1	2	2.00	138
GB-GX-147-80		14.7	3.84	350	5.59	5	1	2	2.00	138
GB-GX-168-80		16.8	4.38	400	6.38	7.5	1	2	2.00	138
GB-GX-210-80	3	21.0	5.48	500	7.98	10	1	2	2.00	138
GB-GX-252-80		25.2	6.58	600	9.58	15	1	2	2.00	138
GB-GX-294-80		29.4	7.67	700	11.17	15	1	2	2.00	138

ZEECO® combustion and environmental solutions are designed and manufactured to comply with applicable local and international standards as defined by our customers.



REGISTERED ISO 9001: 2008

CERTIFICATION APPLIES TO ZEECO HEADQUARTERS ONLY.

Zeeco Global Headquarters

22151 East 91st Street

Broken Arrow, Oklahoma 74014 USA

Phone: +1 918 258 8551

Fax: +1 918 251 5519

E-mail: sales@zeeco.com

Zeeco.com

ZEECO® is a registered trademark of Zeeco, Inc. in the U.S.

• ZEECO office, affiliate, sales, representative, or third party representative/licensee offices.

© COPYRIGHT 2016 - ZEECO, INC. ALL RIGHTS RESERVED

