



Subsea Pipe End Plug

Subsea Pipe End Plugs can be supplied as a temporary or permanent cap to terminate open pipe ends. They provide a robust isolation barrier to prevent seawater ingress or residual hydrocarbon escape to the environment.

The Pipe End Plugs are supplied with securing wedge locks to ensure security of the isolation plug in the pipeline at the specified pressures, and the large section elastomeric compression seal provides a leak tight seal, even in corroded and pitted pipework.

These high performance plugs are lightweight and simple to install by diver or ROV. Once inserted into the open pipe end, the plugs are activated and set in position by applying torque to the plug torque interface.

To aid installation the Pipe End Plugs are supplied with a handling bracket and buoyancy as required.

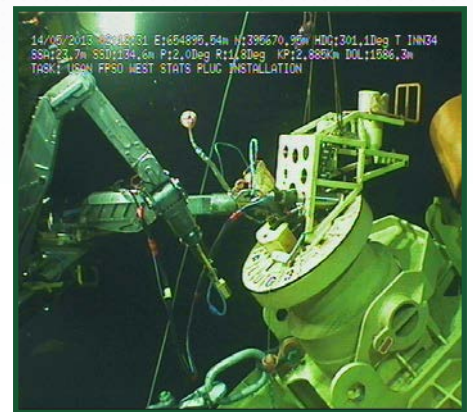
The Pipe End Plug lock and seal technology is based on the Tecno Plug range of high pressure isolation tools which have an extensive track record covering a range of pipe sizes, pressures and mediums including, gas, crude oil and condensate.



12" Duplex High Pressure Subsea Pipe End Plug



10" Subsea Pipe End Plug



ROV Deployment of 22" Commissioning Plug



Diverless Commissioning Plugs to enable flooding, gauging and hydrotesting of new pipelines