



## Pipeline Repair Clamps

Process and pipeline Repair Clamps are designed to be installed on damaged or leaking pipework, encapsulating the defect within the clamp body and restoring pressure integrity through mechanical seals and / or locks engaging on the sound parent pipe.

### Pressure Containment Clamp

Pressure Containment Clamps have been developed for process piping repair on oil and gas pipelines and process facilities. Installation can be undertaken with minimal disruption to the pipework or operation of the system to which they are fitted. The Pressure Containment Clamps are designed to be installed on damaged or leaking pipework, encapsulating the defect within the clamp body and restoring pressure integrity through mechanical seals engaging on the sound parent pipe. The clamps are routinely fitted to address defects in pipe sections. Designed for simple installation, the clamps can be modified or redesigned to suit specific installation requirements.

### Structural Repair Clamp

Structural Repair Clamps provide pressure containment and, where grout filled, radial support to the pipe. Where a Pressure Containment Clamp is fitted with taper locks it becomes a Structural Clamp to provide axial restraint and structural integrity. The locks are configured as opposing sets which grip the pipe on either side of the defect. The locks are designed to transfer the full axial load of the pipe to the clamp body so allowing the clamp to withstand full pipeline separation loads.

### Operator Benefits

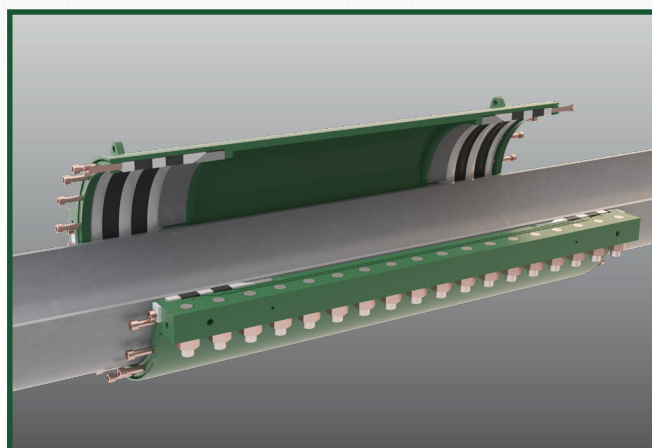
- ◆ Repair clamps maintain integrity and restore pipeline's maximum allowable operating pressure (MAOP) capacity
- ◆ Manufactured to meet specific pipe specification and design code
- ◆ Repair clamp provides equivalent or greater strength than the host pipework
- ◆ Robust construction and coated to provide protection in a range of hostile operating environments. Coating can be supplied to client specification.

### Specification

- ◆ Size range: nominal pipe sizes 4" – 46"
- ◆ Pressure range: ambient to 300 Bar / 4350 psi
- ◆ Seals against pipeline using compression flanges
- ◆ Elastomer seals compliant with corroded pipe external conditions
- ◆ Dual seal with body cavity and annulus test capability
- ◆ Taper locks to prevent pipeline separation (Structural Clamp only)
- ◆ Optional polymeric grout sealant injection for radial support

### Typical Applications

- ◆ Process piping
- ◆ Infield flowlines
- ◆ Trunk pipelines
- ◆ Subsea repair
- ◆ Risers
- ◆ 'Contingency Equipment' to meet legislative and operator code of practice



Structural Repair Clamp



8" 200 Bar Pressure Containment Clamp