

Pan Carousel

The Vidir Pan Carousel is a fully automated storage system with carriers that rotate up and down to deliver SKU's to the operator at an ergonomic height. The carousel can recover an average of 75% of your floor space by utilizing overhead space for storage, increasing inventory accuracy, providing greater security, control, and increasing workplace safety. Simple and intuitive controls easily interface with enterprise level ERP and WMS systems to provide a fully integrated storage solution.

For more information scan the code.



- Recovers average of 75% of your floor space
- Can operate and track inventory as an individual database or integrate with enterprise level ERP systems
- Increased workplace safety
- Improved productivity with more efficient SKU picking
- Improved security with optional gates, password protection, and access logs
- Flexible carrier configuration options to meet changing inventory needs

Safe Handling • Easy Access • Maximum Storage • Fast Retrieval • Small Footprint

Toll Free: 800.210.0141 www.storevertical.com

Pan Carousel



Pan Carousel Specifications		
Technical Specifications	Imperial	Metric
Unit Specifications		
Height	max. 28'	max. 8,534 mm
Depth	5' 8" / 6' 6"	1,727 / 1,981 mm
Width	8' 0" - 12' 0"	2,438 - 3,658 mm
Carrier Specifications		
Height	12" / 18"	304 / 457 mm
Depth	18" / 24"	457 / 609 mm
Width	71" - 119"	1,803 - 3,022 mm
Capacity Specifications		
Load Capacity	max. 40,000 lbs.	max. 18,144 kg
Load per Carrier	max. 1,550 lbs.	max. 703 kg
Unit Imbalance	2,990 lbs.	1,357 kg
Retrieval Speed	22 / 26.5 ft/min	6,706 / 8,077 mm/min

Carrier Configuration

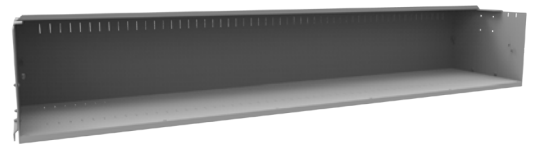
Whether storing products directly in the carrier, using standard storage containers, or application specific containers and bins the Pan Carousel's flexible carrier design can be optimized to best utilize the available cubic feet within the carousel.

Vidir's carriers come in two standard sizes with up to 30 ft³ of available storage per carrier. Up to 750 lbs can be loaded per carrier to a total of 13,000 lbs overall carousel capacity.

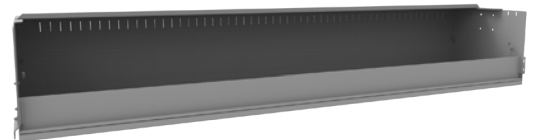
- 12" pitch x 18" depth x 71" - 119" width
- 18" pitch x 24" depth x 71" - 119" width

The carriers can be sub-divided using removable dividers and intermediate shelves to create smaller compartments and more surface area for smaller SKU applications. Carrier lips are available in 2" and 6" sizes to protect inventory and provide more control. Additionally, standard sized bins and totes can be used as needed to create a custom high density storage system that is application specific.

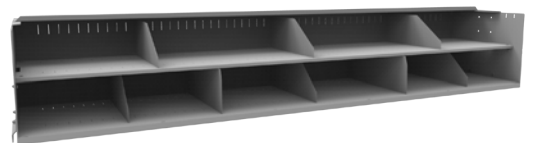
For a personalized space evaluation, please contact your local Vidir representative.



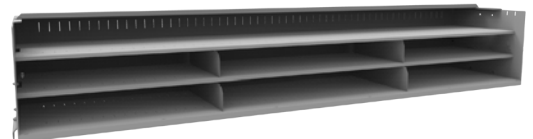
Open carrier option accepts any number of storage configurations.



Carrier with 6" lip creating a self-contained storage bin.



Carrier with dividers for simple and easy sorting SKU's.



Carrier with 2 intermediate shelves and supporting dividers for small part configurations.

Safe Handling • Easy Access • Maximum Storage • Fast Retrieval • Small Footprint

Toll Free: 800.210.0141 www.storevertical.com