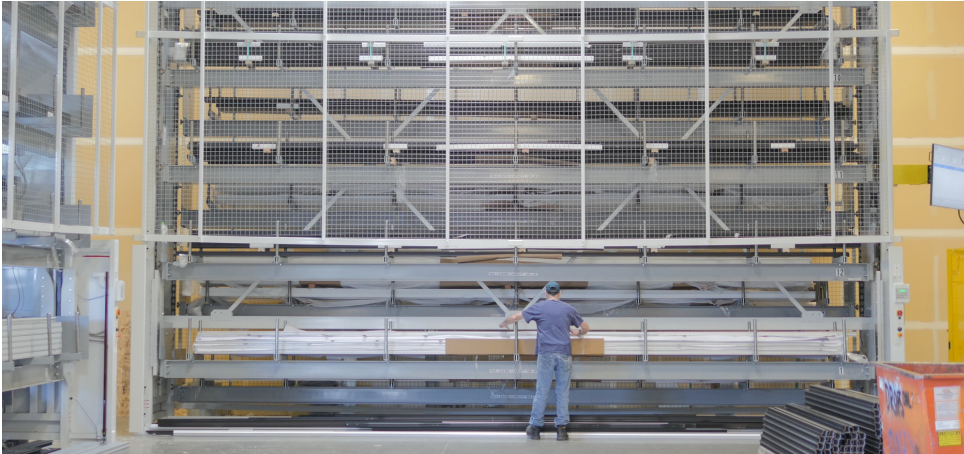


# BAR STOCK SHELVING CAROUSEL

The **Vidir Bar Stock Shelving Carousel** is a semi or fully automated storage and retrieval system designed to utilize vertical space for long light weight aluminum or plastic extrusions. The U-shaped carrier design allows for easy loading of bundle goods, while unloading can occur one item at a time. The vertical design allows product to be stored in-line with the production process, saving valuable retrieval time. Dual side loading positions can also reduce forklift traffic in work zones.

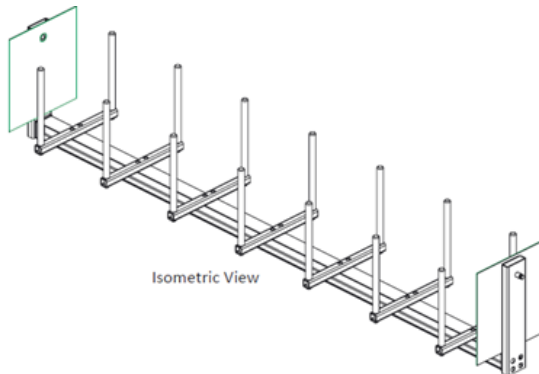


- Maximizes available storage by utilizing overhead space
- Vertical design allows product to be stored in-line with production process
- Stores up to 27' long lengths
- Up to 2000lbs weight capacity per carrier
- U-shaped carrier design with removable vertical bars allows for easy loading with a forklift

## CARRIER DESIGN

Vertical bars on U-shaped carriers\* are removable, allowing a forklift to place a bundled load.

\*Std: 20' H x 21.5' D  
Customizable  
Length: 10' to 27'



## DUAL SIDE ACCESS OPTION

You can load on one side of these carousels and unload on the other, so there's less forklift traffic in the working area.

## UNLOADING NOSE OPTION

A loading nose (or unloading) is available – allowing one length to be slid out the end of the carousel passed the towers and onto the next assembly station.

