



UNIFY

More than a mobile table

SWIFTSPACE

www.swiftspaceinc.com



1. Mobile Storage

Complete line of mobile pedestals, storage towers, and lateral files available.

2. Visual Privacy

Panels can be added to center or side of stations for increased privacy and acoustics. Panels can be mounted above the surface for increased privacy or moved below for collaboration <https://vimeo.com/302339705>. Various materials available.

3. Worksurface

Standard depths are 24", 36" or 42". Standard lengths are 48", 60", 72" or 96". Surface shapes can be rectangular, oval or peninsula. Surfaces flip for easy storage.

4. Power and Data

Can be ordered with one detachable power bar that provides four electrical outlets and two USB outlets of surface power. The powerbar can be plugged into any regular electrical outlet to give 15 amps of power. Separate compartment for running up to 40 data cables. Underneath the surface is a raceway for the data cables and our Trac4 power system if additional power is required.

5. Accessories

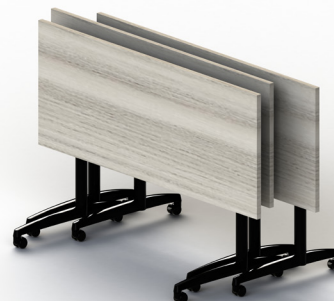
Height-adjustable keyboard arms and trays and clamp on monitor arms available.

6. Lift

Add the Lift for an easy pneumatic sit-stand solution built into the works. The 21.5"x31.5" surface raises 14.5" above the finished surface and can hold up to 20 pounds.

Our Mobile Tables,

- Are on castors
- Easy to reconfigure between private and collaborative
- Arrive fully assembled



For more information about our products or to schedule a demo visit www.swiftspaceinc.com

