

Think Innovation, Durability, Quality

- # Workstation System



Organization



rousseau

Workstation System

“Optimize your Workspace from Top to Bottom.”

Whether you are looking for a basic workbench with two legs and a top, or a specialized table that is stationary, mobile, or adjustable in height, you will find a solution for each and every application.

You will appreciate their versatility as they evolve with your changing needs by simply adding any of the numerous easy-to-install accessories.

See how it is easy to build your workstation.



1 – Work Surfaces

Here are some of the possibilities.

Laminated Wood

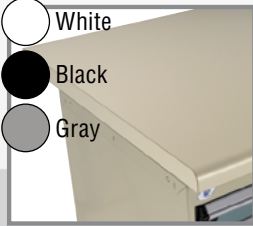


Top for general industrial applications.

Made with varnished hardwood slats.

Good impact resistance.

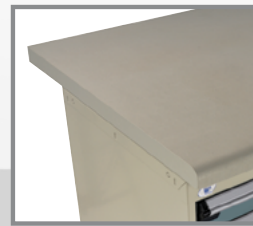
Plastic Laminated



Ideal for assembly, quality control and packaging applications.

Easy to clean.

Resistant Acrylic/PVC Plastic Laminated



Ideal for assembly stations.

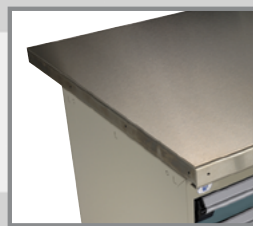
Applications using solvents, oils or other chemical products.

Painted Steel



Industrial, maintenance, repair or assembly applications.

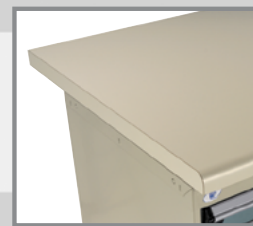
Stainless Steel



Applications using solvents, oils or other chemical products.

Industrial, maintenance, repair or assembly applications.

Dissipative



Ideal for assembly or electronics inspection stations.

Resistance point to point and point to ground between 10^6 and $10^9 \Omega$.

2 – Under The Work Surface

Here are some of the possibilities.

Leg



“Inversed” hat shaped top for added strength.

Drawer Unit



Drawers on precision ball bearing slide system.

Several drawer and unit heights.

Can be fixed on a cabinet or under a worksurface.

“L” Cabinet



Drawer on precision ball bearing slide system assures easy, consistent opening without getting wedged.

100 lb capacity per drawer and 100% access to drawer content.

Optional central locking mechanism.

“R” Cabinet



Applications that require more flexibility or capacity.

400 lb capacity per drawer and a lifetime warranty on the rolling mechanism.

Wide-range of dimensions and accessories.

Doors



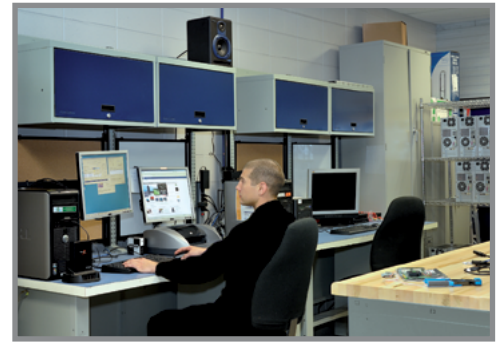
Offered in both solid metal or polycarbonate, doors close and lock the area beneath the work surface.

Smooth, quiet movement.

CPU Support



Handle allows width of plastic side support to be adjusted.



Customize your work centers according to your needs for maximum output.

3 – Above the Work Surface

Here are some of the possibilities.

Riser Shelf



Tilttable Shelf



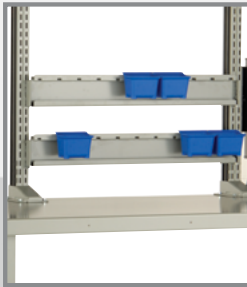
Overhead Cabinet



Louvered Panel for Plastic Bin



Plastic Bin Rail



Electronic Tablet Support



Layout and position of the majority of the accessories can be changed without tools. Components are installed by simply tightening handles or by hooking them onto the uprights.

Mobile Workbench and “L” Cabinet



100 lb capacity per drawer assures easy and consistent opening without getting wedged thanks to a precision ball bearing slide system.

Equipped with high-quality 4" or 6" casters and available in single, double and triple versions.

Optional central locking and lock-in mechanisms available.

Multi-Purpose Frame



WSC3017

The support may be installed on Rousseau workbenches as well as most workbench tops offered on the market. It offers infinite possibilities to increase efficiency and productivity.

Multi-Purpose Stand



The multipurpose stand provides easy access to tools and equipment.

It increases productivity and reduces risk of injury.

Available mobile or stationary.



rousseaumetal.com

rousseau

Since 1950 Rousseau has been designing, engineering and manufacturing modular storage systems for a variety of markets. Our 254,000 square foot facility, a sign of our growth and vitality, is equipped with cutting edge technology.

We offer a complete and integrated solution for all of your storage needs: drawers for shelving and cabinets, industrial shelving, Mini-racking, workstations, toolboxes and more.

Visit us at www.rousseaumetal.com for all the details.



WSC3016

Rousseau product line

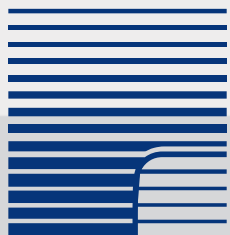


Modular Drawer System

Spider® Shelving System

Workstation System

Toolbox System



Rousseau Métal inc.

105, avenue de Gaspé Ouest
Saint-Jean-Port-Joli (Québec)
G0R 3G0 CANADA

Telephone : 418.598.3381

Fax : 418.598.6776

E-mail : info@rousseaumetal.com

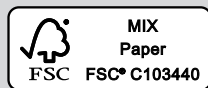
rousseau



You Tube



www.rousseaumetal.com



7PW00A00
W00-MA18A

Rousseau is continuously improving its products and reserves the right to make any modifications judged necessary.

COLORS

Standard Colors

The colors may differ slightly from those illustrated.

Avalanche Blue 055	Everest Blue 051	Classic Blue 052	Midnight Blue 057	Glossy Sapphire Blue 560	Glossy EverGreen 1025
Glossy Carbon Black 741	Black 091	Glossy Black 902	Beige 041	Frost White 061	Light Gray 071
Modern Gray 745	Charcoal Gray 072	White 616	Glossy Yellow 208	Sienna Orange 085	Flame Red 081

Handle End Caps



Ocean Blue
011



Black
031



Orange
021



Glossy Carmine Red - **806**



Glossy Cranberry Red - **815**

Toll free end-users:

1.866.463.4270

Toll free distributors:

1.800.463.4271

Distributors:

www.e-rousseau.com

End-users:

www.rousseaumetal.com

Proposal product numbers shown on the cover: WSC3018, WMC0002

For more information, please contact your local distributor :