

# rousseau

Think Innovation, Durability, Quality

- Thousands of Options
- Same Quality
- Same Lead Time

## Toolbox System



Versatility

Other Rousseau product lines



1.866.463.4270  
info@rousseaumetal.com  
rousseaumetal.com

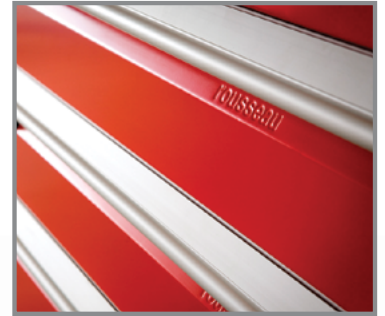


# Toolbox System

**“Toolbox accessories are easily adapted to your many requirements.”**

For all of your different needs, the wide range of our stationary and mobile toolboxes is the ideal solution! Made in North America, these premium quality toolboxes can be adjusted according to your specific requirements thanks to a variety of housing and drawer accessories.

The Rousseau drawer rolling mechanisms have a Lifetime Warranty and drawers provide 100% extension. Whether you need drawers with a 100 lb or 400 lb capacity, there are many different options and models available!



## Smart Compact Mobile “L” Cabinet



L3BBD-2812L3B



L3BED-3430L3



L3BJD-2404L3

100 lb drawer capacity, drawers on slide system.

Non-marking polyurethane casters for easy cabinet movement.

Numerous dimensions available: 6 drawer heights, 2 cabinet housing depths and 5 cabinet housing heights.

Offered with central locking mechanism or drawer Lock-In system.

Many toolbox combinations possible to create single, double or even triple applications!

Available in both stationary and mobile versions.



## Heavy-Duty “R” Cabinet



R5XKE-3003



R5GHG-3016S

Capacity of up to 400 lb per drawer.

Drawer fronts available in both painted or stainless steel.

Durable and distinctive appearance that fits in to any working environment.

Pure North American dimensions for perfect modularity.

Many dimensions available: 10 drawer heights, 15 housing sizes (width x depth) and 4 housing heights.

Available in both stationary and mobile versions.



## “L” and “R” Stationary Applications



L3AED-3404L3



R5KKE-4403

Stationary toolboxes are available; several different bases, recessed for example, leveling glides and anchoring hardware allow you to create the stationary cabinet that perfectly meets your needs. Plus, it's possible for you to go easily from a mobile toolbox to a stationary toolbox, or vice versa, to change according to your evolving needs!





**Rousseau toolboxes are modular to adapt to your reality!**

## Cabinet Accessories

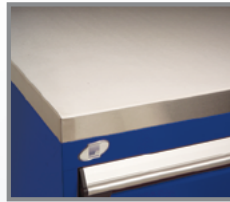
**Electronic Lock**  
(cabinet with drawers only)



**Central Locking System**



**Choice of Top**



**Side Cabinet**  
("R" cabinet)



**Foldaway Shelf**



**MAG Casters – 1000 lb. capacity**



## Drawer Accessories

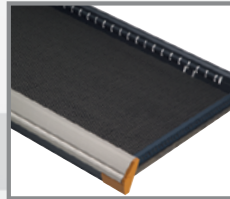
**Partitions and Dividers**



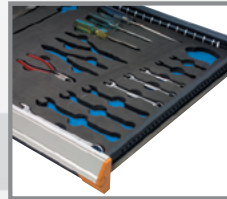
**Plastic Bins**



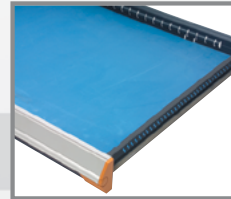
**PVC Drawer Liner**



**Foam for Tools**



**Foam for Protection**



**Label Holders**



## Some Proposals...

### "L" Compact Cabinets

For further information regarding our models and accessories, visit our website at [rousseau-metal.com](http://rousseau-metal.com).



18"W x 21"D x 33 1/4"H  
L3BBD-2804L3



18"W x 21"D x 39 1/4"H  
L3BBD-3402L3



36"W x 21"D x 39 1/4"H  
L3BED-3404L3



36"W x 21"D x 39 1/4"H  
L3BED-3402L3



54"W x 21"D x 39 1/4"H  
L3BJD-3402L3



54"W x 21"D x 45 1/4"H  
L3BJD-4002L3

### "R" Heavy-Duty Cabinets



24"W x 21"D x 33 1/4"H  
R5BCD-2801



36"W x 24"D x 45 1/2"H  
R5BEE-3803



48"W x 24"D x 37 1/2"H  
R5BHE-3003



48"W x 24"D x 37 1/2"H  
R5BHE-3001



60"W x 27"D x 37 1/2"H  
R5DKG-3007

### "R" Multi-Drawer Cabinets



48"W x 27"D x 41 1/2"H  
R5GHG-3410



48"W x 27"D x 37 1/2"H  
R5GHG-3009



60"W x 27"D x 37 1/2"H  
R5GKG-3009



54"W x 27"D x 45 1/2"H  
R5GJG-3801



**rousseau**  
[rousseau-metal.com](http://rousseau-metal.com)

# rousseau

Since 1950 Rousseau has been designing, engineering and manufacturing modular storage systems for a variety of markets. Our 254,000 square foot facility, a sign of our growth and vitality, is equipped with cutting edge technology.

We offer a complete and integrated solution for all of your storage needs: drawers for shelving and cabinets, industrial shelving, Mini-racking, workstations, toolboxes and more.

Visit us at [www.rousseaumetal.com](http://www.rousseaumetal.com) for all the details.



R5GHG-3014



R5BEE-3010



L3BBD-2408L3

## Rousseau product line



Modular Drawer System



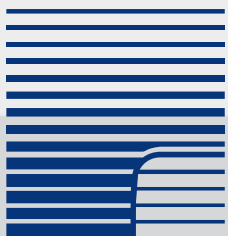
Spider® Shelving System



Workstation System



Toolbox System



**rousseau**

[www.rousseaumetal.com](http://www.rousseaumetal.com)

## Rousseau Métal inc.

105, avenue de Gaspé Ouest  
Saint-Jean-Port-Joli (Québec)  
G0R 3G0 CANADA

Telephone : 418.598.3381

Fax : 418.598.6776

E-mail : [info@rousseaumetal.com](mailto:info@rousseaumetal.com)



## COLORS

### Standard Colors

The colors may differ slightly from those illustrated.

Avalanche Blue 055	Everest Blue 051	Classic Blue 052	Midnight Blue 057	Glossy Sapphire Blue 560	Glossy EverGreen 1025
Glossy Carbon Black 741	Black 091	Glossy Black 902	Beige 041	Frost White 061	Light Gray 071
Modern Gray 745	Charcoal Gray 072	White 616	Glossy Yellow 208	Sienna Orange 085	Flame Red 081

### Handle End Caps

Ocean Blue 011	Black 031	Orange 021	Glossy Carmine Red - 806	Glossy Cranberry Red - 815

Toll free end-users:

1.866.463.4270

Toll free distributors:

1.800.463.4271

Distributors:

[www.e-rousseau.com](http://www.e-rousseau.com)

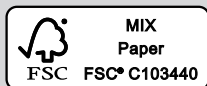
End-users:

[www.rousseaumetal.com](http://www.rousseaumetal.com)

Proposal product numbers shown on the cover:

R5EKE-5801, R5GHG-3826, L3BJD-2810B

For more information, please contact your local distributor :



7PT00A00  
T00-MA18A

Rousseau is continuously improving its products and reserves the right to make any modifications judged necessary.