

# MANIFOLDING DUCTWORK



◀ Pro-Fabriduct®  
Full Coil Line  
with Inline  
Plasma Cutting

Save time and money by manifolding ductwork quickly and accurately in a controlled shop environment before sending it to a job site.

- Improve quality control and safety in a controlled environment
- Reduce the number of field call backs and mistakes
- Shift labor from field to shop reducing costs through lower wage rates
- Leakage tests performed based on pressure class prior to installation in the field
- Increased ability to deliver under stringent timelines
- Pre-fabrication in shop versus onsite eliminates searching for parts, missing fittings, and material handling



Full In-Line Plasma Cutter

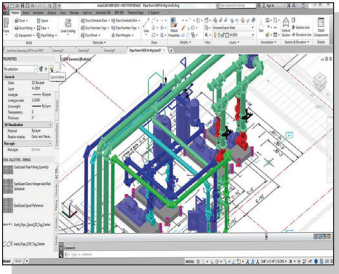


The FIRST Premier Partner Program Member  
to Join this Elite Group

# MANIFOLDING DUCTWORK

With the ability to manifold ductwork in the shop, the contractor can save not only money, but also time. This type of shop of fabrication lends itself to controlling quality and meeting or beating tight construction schedules. Shop fabrication is more efficient.

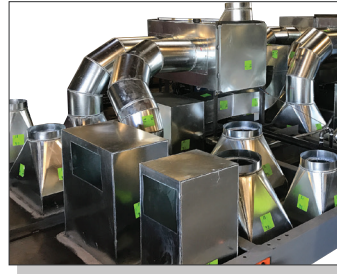
## PROCESS



**1 DESIGN**



**2 FABRICATE**



**3 ASSEMBLE**

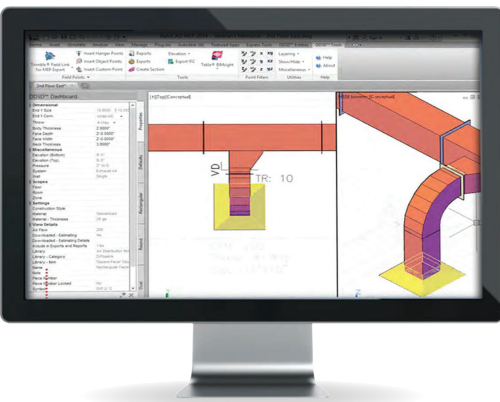


**4 DELIVER**

## DUCTWORK SAMPLE DESIGNS



## CAD TO CAM



With CAD to CAM software interoperability, create complex ductwork systems and ease the installation process by pre-assembling on the floor prior to shipping to the job site.