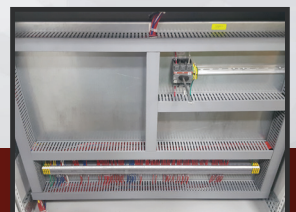


# CONTROLS RETROFIT



*If your Coiline still uses these...*

It is time for an OEM Controls  
Retrofit from Engel



*Controls Space for future  
Coiline Expansion*



# ENGEL CONTROL RETROFIT

## UPDATE TO THE LATEST IN COILINE CONTROLS:

As a part of Mestek Machinery, this upgrade control package is Engel designed and certified and is the only OEM (Original Equipment Manufacturer) of Engel coil processing and metal forming equipment. The components and equipment for this retro, when properly installed, maintained and operated, will be capable of meeting or in some cases exceeding the original Engel OEM specifications.

That older machine may be very capable mechanically for years to come, but aging electronics can make it impossible to keep that machine in top operating condition. A control retrofit can give new life to that asset.

## SUPPLIED WITH EACH NEW CONTROL APPLICATION:

- Solid state components with industrial grade touch screen.
- Intuitive user interface provides At-A-Glance operational assessment.
- Status messages prompt user for required information.
- New operator manual and complete electrical drawings.
- Designed to NFPA 79-Standards for Industrial Machinery.
- New drive and motor for brake.

## OPTIONAL:

- Controls capable of supplying future expansion and updated add-ons.

## ADD-ONS:

- Electric roll drive
- Hydraulic CDA

