

# CareSignal AI: Predictive and Preventative Re-engagement because only engaged patients yield clinical and financial returns

For any patient-facing solution, disengagement or attrition is a reality. This fundamental challenge presents an opportunity. If even a fraction of those patients who have fallen off could be retained, their clinical outcomes—and the

Without CareSignal AI  
1 in 2 patients  
stay engaged with  
CareSignal over  
a 12-month period

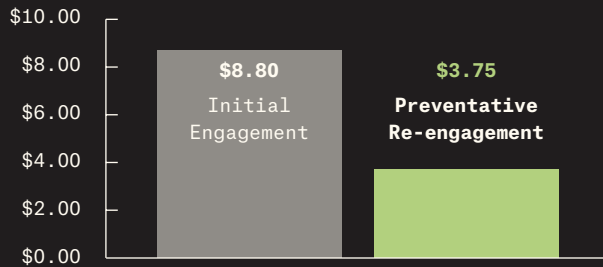


With CareSignal AI  
57% more patients  
may remain engaged  
over the same  
12-month period

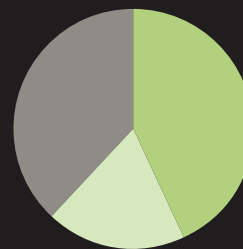


CareSignal AI Results in patients that are kept on longer (and they stay healthier longer, too).

Preventative re-engagement costs less than replacing disengaged patients



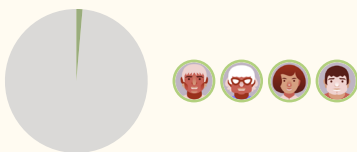
AI-informed, preventative outreach delivers dramatically better engagement



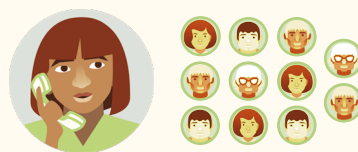
57% of Patients Remain Engaged After AI-Informed Outreach

- 38% Improved Engagement
- 19% Maintained Engagement
- 43% Disengaged

## CareSignal AI-Informed Outreach



Caresignal (CS) AI highlights 1.5% of patients at-risk of disengaging



CS Re-engagement Specialists re-engage 11.4 patients per hour

## Standard Manual Outreach



Care Managers or staff re-engage 1 patient per hour

## Powered by Deviceless Remote Patient Monitoring®

7,280,273+

patient days (and counting) of data and metadata

16.62+

lifetimes of care manager interactions

24+

condition-specific programs



We're so confident in our product, we offer at-risk pricing, too. Schedule time with a Value-Based Care expert to learn more about CareSignal AI.  
<http://www.crsg.nl/ann>