

# Social Determinants of Health

Identifies unmet basic needs for proactive outreach to help patients address the social factors that impact mental and physical health. Eleven optional modules allow organizations to choose which needs they want to screen for, with introductory and monthly screener options to fit an organization's existing SDOH strategy.

## SDOH Modules



## Example Messages

### Food Messages

In the next month, how likely is it that your food could run out before you get money to buy more? 1 Unlikely 2 Somewhat likely 3 Very Likely

### Housing Messages

What is your living situation today? 1 I have a steady place to live 2 Have a place to live but am worried about losing it 3 I don't have a steady place to live

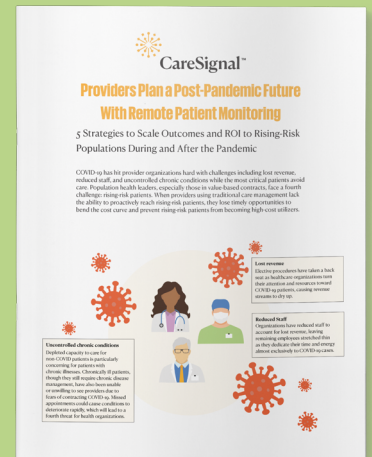
### Transportation Messages

In the next month how worried are you that you won't have reliable transport to go to the doctor, store, etc? 1 Not worried 2 Somewhat worried 3 Very worried

### Utilities Messages

In the next month, how likely is it that the utilities company will shut off or threatened to shut off your service? 1 Unlikely 2 Somewhat likely 3 Very likely

## Featured White Paper



Learn About CareSignal's 5 Strategies to Scale Outcomes & ROI to Rising-Risk Populations During and After the Pandemic

[Read the White Paper](#)

## Introductory Screener

1. Asks questions about basic needs **in the last 12 months**
2. Used for Annual SDOH Screener or a way to identify people who should receive Monthly SDOH Check-In Screener
3. Does not categorize into Red, Yellow, and Green statuses or trigger alerts

## Check-In Screener

1. Asks questions about basic needs **in the next month**
2. Check-In modules sent on a monthly basis (recommended)
3. Triggers alerts for urgent needs categorizes people into Red, Yellow, and Green risk statuses.

## Check-In Screener Features

- Closing question will ask about urgent needs (triggers alerts)
- Users can text "Connect" at anytime to prompt the closing question
- Users receive a "Quick Touch" message each month reminding them about the "Connect" option



Learn more about how your organization can apply CareSignal's Social Determinants of Health Program. Contact [Emily Srygley](#) to learn more!

