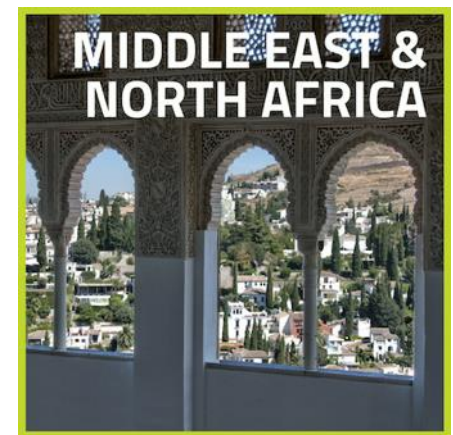


# WORLD COMPARISON CHART FOR TEACHING ENGLISH ABROAD

Compare the most popular countries for teaching English abroad at a glance in Europe, Asia, Latin America & the Middle East and North Africa. The chart has information on [salaries](#), [hiring seasons](#), [degree requirements](#), [visas](#), [saving opportunities](#), and [more](#).

This country chart provides a general overview of the top English teaching markets around the globe. Refer to country profiles on our website (links in the chart) for more detailed information on hiring preferences, the job market, and links to more articles and helpful information. Make sure to check currency exchange rates, speak with an admissions advisor, and do further research to determine which teaching markets are best for you.

**\*\*Please note, due to COVID-19 please be aware of currency fluctuations. Salaries on this chart are pre-COVID-19 outbreak and there may be variations. We recommend checking [XE Currency](#) for the most up-to-date exchange rate.**



**Disclaimer:** International TEFL Academy tries to provide the most up to date and accurate information. This document is based on citizens of the United States as requirements vary by country. Exchange rates were accurate at time of publication on March 1, 2019 Please consult [www.xe.com](http://www.xe.com) for the most up to date exchange rate.

\*Startup costs are estimates in a country for housing, food, expenses until receiving first paycheck which is typically 30 days after start of contract. International TEFL Academy assumes no responsibility for the accuracy of this document as information changes daily around the world.



## TEACHING ENGLISH IN ASIA

The job market and demand for English teachers in East and South East Asia is arguably the largest in the world. Many of these nations are highly industrialized, economically strong, and culturally put an emphasis on the importance of education. This combination has created a large outward recruitment market and many open positions for certified English teachers.

Asia is an excellent region of the world to consider for your career teaching abroad if you are looking to:

- Find a job in advance of being in the country
- Save money
- Receive benefits such as accommodations, medical insurance, flight allowance, work visa assistance, bonuses, vacation time, etc.
- Find a job at virtually any time of the year
- Teach children (there are opportunities to teach adults as well!)

*Keep in mind this is a general overview of all the teaching markets in Asia and a few exceptions may apply so please read the specifics of each country in the chart below.*



Country	Degree Requirement	Typical Contract Length	Peak Hiring Seasons	Expected Down Times	Interview Procedures	Visa Info	Typical Students	Average Monthly Cost of Living in \$ USD & Local Currency	Average Monthly Salary in \$ USD & Local Currency	Estimated Start-up Costs*	Housing	Reimbursed Airfare
<a href="#">Cambodia</a>	BA/BS preferred, not required	6 & 12 months	All Year Round	Lunar (Chinese) New Year 2 weeks late Jan-early Feb	Face-to-face in Cambodia	Tourist visa convert to work visa	Business Professionals, Children	\$500 - 1,000 USD (1,997,500 - 3,995,000 KHR)	\$700 - 1,000 USD (2,796,500 - 3,995,000 KHR) <b>Can save \$200 - 500 USD/Mo</b>	\$1,000 - 1,500 USD (3,995,000 - 5,992,500 KHR)	Self-pay, Housing advice provided by employer	No
<a href="#">China</a>	BA/BS required	6 & 12 months	All Year Round	Lunar (Chinese) New Year 2 weeks late Jan-early Feb	Phone/skype in advance & face-to-face in China	Work visa in advance or Tourist visa convert to work visa	Business Professionals, Children	\$650 - 1,100 USD (4,350 - 7,350 RMB) <b>Plus housing</b>	\$1,250 - 2,850 USD plus free housing. (8,400 - 19,100 RMB) <b>Can save \$600 - 1,750 USD/Mo</b>	\$1,000 - 2,000 USD (6,700 - 13,400 RMB)	Free Housing or Housing Subsidy	Yes
<a href="#">Hong Kong</a>	BA/BS required	12 months	All Year Round	Lunar (Chinese) New Year 2 weeks late Jan-early Feb	Phone/skype in advance	Work visa in advance	Business Professionals, Children	\$2,300 - 5,000 USD (18,000 - 39,000 HKD)	\$2,300 - 3,000 USD (18,000 - 23,250 HKD) <b>Can save \$400 - 600 USD/Mo</b>	\$2,000 - 3,000 USD (15,700 - 23,250 HKD)	Self-pay, Housing advice provided by employer	Sometimes



Country	Degree Requirement	Typical Contract Length	Peak Hiring Seasons	Expected Down Times	Interview Procedures	Visa Info	Typical Students	Average Monthly Cost of Living in \$ USD & Local Currency	Average Monthly Salary in \$ USD & Local Currency	Estimated Start-up Costs*	Housing	Reimbursed Airfare
<a href="#">Indonesia</a>	BA/BS required	12 months	All Year Round	Islamic Holidays	Phone/skype in advance	Work visa in advance	Business Professionals, Children	\$550 - 850 USD (7,330,000 - 12,000,000 IDR)	\$650 - 1,050 USD (9,300,000 - 14,700,000 IDR)	\$700 - 1,100 USD (9,790,050 - 15,384,350 IDR)	Self-pay, Housing advice provided by employer	Sometimes
<a href="#">Japan</a>	BA/BS required	12 months	All Year Round	None	Interview in US, Canada, UK 3 - 6 months in advance	Work visa in advance	Business Professionals, Children	\$800 - 2,000 USD (88,650 - 221,650 JPY) <b>Plus housing</b>	\$1,500 - 2,500 USD (166,250 - 277,050 JPY) <b>Can save \$500 - 700 USD/Mo</b>	\$2,500 - 3,000 USD (277,050 - 332,500 JPY)	Some free housing or housing subsidy	No
<a href="#">Kazakhstan</a>	BA/BS preferred, not required	12 months	All Year Round	None	Phone/skype in advance, sometimes face-to-face	Work visa in advance	Business Professionals, Children	\$700 - 850 USD (253,000 - 316,000 KZT)	\$350 - 1,250 USD (126,000 - 474,000 KZT)	\$800 - 1,000 USD (301,050 - 376,300 KZT)	Some Free Housing	No/Some return flight
<a href="#">Kyrgyzstan</a>	BA/BS preferred, not required	6 & 12 months	All Year Round	None	Phone/skype in advance, sometimes face-to-face	Work visa in advance	Business Professionals, Children	\$400 - 800 USD (27,000 - 54,000 KGS)	\$400 - 800 USD (27,000 - 54,000 KGS)	\$800 - 1,000 USD (54,000 - 68,000 KGS)	Some Free Housing	No
<a href="#">Laos</a>	BA/BS preferred, not required	6 & 12 months	All Year Round	None	Face-to-face in Laos	Tourist Visa or Work Visa	Business Professionals, Children	\$500 - \$1,000 USD (4,180,000 LAK - 8,360,000 LAK)	\$500 - \$1,000 USD (4,180,000 LAK - 8,360,000 LAK)	\$1,000 - \$1,500 USD (8,360,000 LAK - 12,540,000 LAK)	Self-pay, Housing advice provided by employer	No
<a href="#">Malaysia</a>	BA/BS required, Master's preferred	12 months	All Year Round	Lunar (Chinese) New Year 2 weeks late Jan-early Feb	Phone/skype in advance	Work visa in advance	Business Professionals, Children	\$900 - 1,800 USD (3,500 - 7,000 MYR)	\$1,200 - 2,300 USD (4,700 - 9,000 MYR)	\$1,350 - 2,700 USD (5,300 - 10,550 MYR)	Self-pay, Housing advice provided by employer	No
<a href="#">Myanmar</a>	BA/BS required	12 months	All Year Round, May-Sept	None	Phone/skype in advance, sometimes face-to-face	Business Visa	Business Professionals, Children	\$650 - \$800 USD (1,027,400 - 1,232,900 MMK)	\$900 - \$1,800 USD (1,371,200 - 2,739,700 MMK)	\$1,100 - 2,000 USD (1,676,500 - 3,048,200 MMK)	Self-pay, Housing advice provided by employer	No
<a href="#">Singapore</a>	BA/BS required	12 months	All Year Round	Lunar (Chinese) New Year 2 weeks late Jan-early Feb	Phone/skype in advance	Work visa in advance	Business Professionals, Children	\$2,750 - 3,400 USD (3,700 - 4,600 SGD)	\$2,750 - 3,550 USD (3,700 - 4,800 SGD)	\$5,500 - 6,800 USD (7,450 - 9,200 SGD))	Self-pay, Housing advice provided by employer	No
<a href="#">South Korea</a>	BA/BS required	12 months	All Year Round	None	Phone/skype in advance	Work visa in advance	Business Professionals, Children	\$650 - 900 USD (730,600 - 1,010,500 KRW) <b>Plus housing</b>	\$1,850 - 2,500 USD (2,100,000 - 2,807,000 KRW) <b>Plus free Housing Can save \$1,200 - \$1,600 USD/Mo</b>	\$1,000 - 2,000 USD (1,122,850 - 2,245,650 KRW)	Free Housing or Housing Subsidy	One way or round trip

Country	Degree Requirement	Typical Contract Length	Peak Hiring Seasons	Expected Down Times	Interview Procedures	Visa Info	Typical Students	Average Monthly Cost of Living in \$ USD & Local Currency	Average Monthly Salary in \$ USD & Local Currency	Estimated Start-up Costs*	Housing	Reimbursed Airfare
<a href="#">Taiwan</a>	BA/BS required, some AA accepted	12 months	After Lunar (Chinese) New Year and July - August	Lunar (Chinese) New Year 2 weeks late Jan - early Feb	Phone/skype in advance	Work visa in advance	Business Professionals, Children	\$500 - 1,500 USD (15,400 - 46,150 TWD)	\$1,000 - 2,000 USD (30,800 - 61,500 TWD) <b>Can save up to \$500 USD/Mo</b>	\$1,500 - 2,500 USD (46,150 - 76,900 TWD)	Self-pay, Housing advice provided by employer	No
<a href="#">Thailand</a>	BA/BS required	5 to 12 months	Feb - April & Aug – Oct; All Year round	None	Most face-to-face in Thailand; Some phone/skype in advance	Work visa in advance or in country	Business Professionals, Children	\$500 - 800 USD (15,700 - 25,100 THB)	\$950 - 1,500 USD (30,000 - 47,000 THB) <b>Can save \$450 - \$700 USD/Mo</b>	\$1,000 - 1,500 USD (31,350 - 47,000 THB)	Self-pay, Housing advice provided by employer	No
<a href="#">Vietnam</a>	BA/BS required	12 months	All Year Round	Tet Holiday 2 weeks late Jan - early Feb	Most face-to-face in Vietnam; Few phone/skype in advance	Tourist visa convert to work visa or work visa in advance	Business Professionals, Children	\$500 - 900 USD (11,605,000 - 20,889,000 VND)	\$1,100 - 1,500 USD (25,049,500 - 35,000,000 VND) <b>Can save up to \$600 USD/Mo</b>	\$1,000 - 2,000 USD (22,772,000 - 46,404,950 VND)	Self-pay, Housing advice provided by employer	No



## TEACHING ENGLISH IN LATIN AMERICA

A combination of rising living standards, integration with the globalized economy, and rapid growth in tourism has caused a surge in the demand for English instruction throughout Mexico, Central America, South America and a few countries in the Caribbean. While outward recruitment and the chance to save money aren't as strong in this part of the world as in other regions, there are still many great opportunities and experiences to be had.

Latin America is an excellent region of the world to consider for your career teaching abroad if you are looking to:

- Head overseas in January/February or July/August
- Teach adult students (there are some opportunities to teach children as well!)
- Interview with potential employers face-to-face in country
- Live a comfortable lifestyle while breaking even financially
- Teach in a country that doesn't necessarily require a bachelor's degree

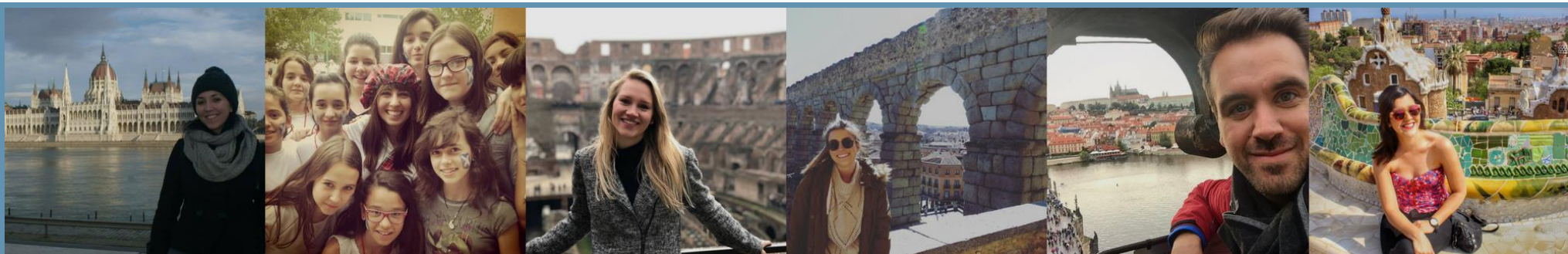
*Keep in mind this is a general overview of all the teaching markets in Latin America and a few exceptions may apply so please read the specific of each country in the chart below.*



Country	Degree Requirement	Typical Contract Length	Peak Hiring Season	Expected Down Times	Interview Procedures	Visa Info	Typical Students	Average Monthly Cost of Living in USD & Local Currency	Average Monthly Salary in \$ USD & Local Currency	Approximate Start-up Costs*	Housing	Reimbursed Airfare
<a href="#">Argentina</a>	BA/BS preferred, not required	6 & 12 months	Feb-Mar, July-Aug	Christmas-End of February	Face-to-face in Argentina	Tourist visa	Business Professionals	\$800 - 1200 USD (31,200 - 47,000 ARS)	\$600 - 1100 USD (23,500 - 43,000 ARS)	\$1,500 - 2,500 USD (58,600 - 97,700 ARS)	Self-pay, Housing advice provided by employer	No
<a href="#">Bolivia</a>	BA/BS preferred, not required	6 & 12 months	Feb-Mar, July-Aug	Christmas-End of January	Face-to-face in Bolivia	Tourist visa	Business Professionals	\$500 - 700 USD (3,500 - 4,900 BOB)	\$500 - 900 USD (3,500 - 6,200 BOB)	\$1,000 - 1,200 USD (6,900 - 8,300 BOB)	Self-pay, Housing advice provided by employer	No
<a href="#">Brazil</a>	BA/BS preferred, not required	6 & 12 months	Mar-August	Christmas-End of February	Most face-to-face in Brazil; Some phone/skype in advance	Tourist visa	Business Professionals	\$800 - 1,300 USD (3,000 - 4,800 BRL)	\$800 - 1,300 USD (3,000 - 4,800 BRL)	\$1,200 - 2,000 USD (4,400 - 7,400 BRL)	Self-pay, Housing advice provided by employer	No

Country	Degree Requirement	Typical Contract Length	Peak Hiring Seasons	Expected Down Times	Interview Procedures	Visa Info	Typical Students	Average Monthly Cost of Living in \$ USD & Local Currency	Average Monthly Salary in \$ USD & Local Currency	Estimated Start-up Costs*	Housing	Reimbursed Airfare
<a href="#">Chile</a>	BA/BS preferred, not required	6 & 12 months	Feb-Mar July-Aug	Christmas- End of February	Many face-to-face in Chile; Some phone/skype in advance	Tourist visa or work visa	Business Professionals, Children with Public Schools	\$650 - 1,000 USD (425,000 - 650,000 CLP)	\$750 - 1,000 USD (490,000 - 650,000 CLP)	\$1,850 - 2,250 USD (1,200,000 - 1,500,000 CLP) Includes a \$720 visa fee that teacher must pay for in Chile.	Self-pay, Housing advice provided by employer	No
<a href="#">Colombia</a>	BA/BS preferred, not required	6 & 12 months	Jan-Mar, July-Aug	Mid to end of December	Face-to-face in Colombia or Phone/skype in advance	Tourist visa or work visa	Children or Business Professionals	\$500 - 1,050 USD (1,550,000 - 3,250,000 COP)	\$500 - 1,050 USD (1,550,000 - 3,250,000 COP)	\$1,000 - 1,600 USD (3,100,000 - 5,000,000 COP)	Self-pay, Housing advice provided by employer	No
<a href="#">Costa Rica</a>	BA/BS preferred, not required	6 & 12 months	All Year Round	Christmas-2 <sup>nd</sup> week in January Early July for 2 weeks	Face-to-face in Costa Rica; Some phone/skype in advance	Tourist visa, Independent Contractor License	Business Professionals	\$700 - 900 USD (397,000 - 510,000 CRC)	\$700 - 900 USD (430,000 - 550,000 CRC)	\$1,200 - 1,800 USD (729,000 - 1,100,000 CRC)	Self-pay, Housing advice provided by employer	No
<a href="#">Dominican Republic</a>	BA/BS preferred, not required	12 Months	All Year Round	Christmas-February (Carnival)	Face-to-face in the Dominican Republic; Some phone/skype in advance	Tourist visa or work visa	Business Professionals	\$500 - \$800 USD (24,700 - 40,000 DOP)	\$500 - \$800 USD (24,700 - 40,000 DOP)	\$1,000 - 1,200 USD (49,300 - 60,000 DOP)	Self-pay, Housing advice provided by employer	No
<a href="#">Ecuador</a>	BA/BS preferred, not required	6 & 12 months	Feb-Mar, July-Aug	Christmas-End of January	Phone/skype in advance, or face-to-face in Ecuador	Work visa	Business Professionals	\$500 - 800 USD	\$500 - 800 USD	\$1,000 - 1,200 USD	Self-pay, Housing advice provided by employer	No
<a href="#">Guatemala</a>	BA/BS preferred, not required	6 & 12 months	Feb-Mar, July-Aug	Christmas, Carnival, Easter	Face-to-face in Guatemala	Tourist visa	Business Professionals	\$500 - \$600 USD (3,700 - 4,400 GTQ)	\$500 - \$600 USD (3,700 - 4,400 GTQ)	\$1,000 - \$1,200 (7,700 - 9,250 GTQ)	Self-pay, Housing advice provided by employer	No
<a href="#">Honduras</a>	BA/BS preferred, not required	6 & 12 months	April - August	None	Face-to-face in Honduras; Some phone/skype in advance	Tourist visa	Children or Business Professionals	\$400 - \$600 (9,450 - 14,200 HNL)	\$500 - \$800 (11,800 - 18,900 HNL)	\$1,000 - \$1,200 (23,600 - 28,300 HNL)	Self-pay, Housing advice provided by employer	No
<a href="#">Mexico</a>	BA/BS preferred, not required	6 & 12 months	All Year Round	Nov & Dec	Many face-to-face in Mexico; Some phone and email in advance	Work visa	Business Professionals, Children	\$500 - 800 USD (9,300 - 15,000 MXN)	\$500 - 800 USD (9,300 - 15,000 MXN)	\$1,300 - 1,800 USD (25,000 - 34,650 MXN) Includes a \$400 work visa fee..	Self-pay, Housing advice provided by employer	No
<a href="#">Nicaragua</a>	BA/BS preferred, not required	3, 6 & 12 months	All Year Round	Christmas-Mid January	Face-to-face in Nicaragua	Tourist visa	All Ages	\$300 - 600 USD (9,400 - 18,800 NIO)	\$300 - 600 USD (9,400 - 18,800 NIO)	\$1,000 - 1,200 USD (32,650 - 39,150 NIO)	Self-pay, Housing advice provided by employer	No
<a href="#">Panama</a>	BA/BS preferred, not required	6 & 12 months	Feb-Mar, July-Aug	Christmas-End of January	Face-to-face in Panama	Tourist visa	Business Professionals	\$900 - 1,300 USD	\$900 - 1,300 USD	\$1,350 - 2,000 USD	Self-pay, Housing advice provided by employer	No
<a href="#">Peru</a>	BA/BS preferred, not required	3, 6 & 12 months	Feb-Mar, July-Aug	Christmas-End of January	Face-to-face in Peru	Tourist visa	Business Professionals	\$500 - 1,000 USD (1,650 - 3,300 PEN)	\$500 - 1,000 USD (1,650 - 3,300 PEN)	\$1,000 - 1,500 USD (3,300 - 4,900 PEN)	Self-pay, Housing advice provided by employer	No
<a href="#">Uruguay</a>	BA/BS preferred, not required	6 & 12 months	Feb-Mar, July-Aug	Christmas-End of January	Face-to-face in Uruguay	Tourist visa	Business Professionals	\$900 - 1,300 USD (30,100 - 42,000 UYU)	\$900 - 1,300 USD (30,100 - 42,000 UYU)	\$1,600 - 2,200 USD (52,300 - 71,900 UYU)	Self-pay, Housing advice provided by employer	No





## TEACHING ENGLISH IN EUROPE

The English teaching market in Europe is vast. Learning English has become more essential since 1993 when the EU was founded, making English a common language for business and education. Although there are many member countries of the EU, each country has their own hiring practices and visa rules for non-EU citizens. However, if you have EU citizenship, you will not need to apply separately for a work visa.

Europe is an excellent region of the world to consider for your career teaching abroad if you are looking to:

- Head overseas in September or January for the two main hiring seasons
- Interview with potential employers face-to-face in country (there are some opportunities to find work in advance!)
- Teach adult students (there are some opportunities to teach children as well!)
- Live a comfortable lifestyle while breaking even financially

*Keep in mind this is a general overview of all the teaching markets in Europe and a few exceptions may apply so please read the specifics of each country in the chart below.*



Country	Degree Requirement	Typical Contract Length	Peak Hiring Season	Expected Down Times	Interview Procedures	Visa Info	Typical Students	Average Monthly Cost of Living in \$ USD & Local Currency	Average Monthly Salary in \$ USD & Local Currency	Approximate Start-up Costs*	Housing	Reimbursed Airfare
<a href="#">Austria</a>	BA/BS required	10 & 12 months	Sept & Jan	Aug, Christmas- 2 <sup>nd</sup> week in Jan	Face-to-face in Austria	EU Citizenship	Business Professionals	\$1,700 - 2,500 USD (1,500 - 2,200 EUR)	\$1,800 - 2,500 USD (1,600 - 2,200 EUR)	\$2,550 - 3,800 USD (2,300 - 3,400 EUR)	Self-pay, Housing advice provided by employer	No
<a href="#">Belgium</a>	BA/BS required	10 & 12 months	Sept & Jan	Aug, Christmas- 2 <sup>nd</sup> week in Jan	Face-to-face in Belgium	EU Citizenship	Business Professionals	\$1,500 - 2,000 USD (1,300 - 1,800 EUR)	\$1,500 - 2,000 USD (1,300 - 1,800 EUR)	\$2,250 - 3,000 USD (2,000 - 2,800 EUR)	Self-pay, Housing advice provided by employer	No
<a href="#">Bulgaria</a>	BA/BS required	9 & 12 months	Sept & Jan	Aug, Christmas- 2 <sup>nd</sup> week in Jan	Phone/skype in advance or face-to-face in Bulgaria	EU Citizenship	Business Professionals, Children	\$650 - 950 USD (1,150 - 1,650 BGN)	\$650 - 950 USD (1,150 - 1,650 BGN)	\$1,000 - 1,450 USD (1,700 - 2,500 BGN)	Self-pay, Housing advice provided by employer	No

Country	Degree Requirement	Typical Contract Length	Peak Hiring Seasons	Expected Down Times	Interview Procedures	Visa Info	Typical Students	Average Monthly Cost of Living in \$ USD & Local Currency	Average Monthly Salary in \$ USD & Local Currency	Estimated Start-up Costs*	Housing	Reimbursed Airfare
<a href="#">Croatia</a>	BA/BS required	10 & 12 months	Sept & Jan	Aug, Christmas- 2 <sup>nd</sup> week in Jan	Face-to-face in Croatia	EU Citizenship	Business Professionals, Children	\$900 - 1,300 USD (6,000 - 8,400 HRK)	\$900 - 1,300 USD (6,000 - 8,400 HRK)	\$1,350 - 2,000 USD (9,000 - 13,100 HRK)	Self-pay, Housing advice provided by employer	No
<a href="#">Czech Republic</a>	BA/BS required	10 & 12 months	Sept & Jan	Aug, Christmas- 2 <sup>nd</sup> week in Jan	Most face-to-face in Czech Republic; Some phone/skype in advance	Tourist visa, convert to contractor visa or EU Citizenship	Business Professionals, Children	\$800 - 1,600 USD (18,000 - 37,000 CZK)	\$1,000 - 1,500 USD (23,000 - 34,000 CZK)	\$2,400 - 4,500 USD (55,000 - 103,000 CZK) **Zivno Visa costs not included	Self-pay, Housing advice provided by employer	No
<a href="#">France</a>	BA/BS required	10 & 12 months	Sept & Jan	Aug, Christmas- 2 <sup>nd</sup> week in Jan	Face-to-face in France	Student visa, work visa through government program, EU Citizenship	Business Professionals	\$1,400 - 2,300 USD (1,200 - 2,000 EUR)	\$800 - 1,800 USD (700 - 1,600 EUR) *TAPIF Stipend: 965 EUR	\$2,100 - 3,500 USD (1,900 - 3,100 EUR)	Self-pay, Housing advice provided by employer	No
<a href="#">Georgia</a>	BA/BS preferred, not required	6 & 12 Months	Year Round	Aug, Christmas- 2 <sup>nd</sup> week in Jan	Phone/skype in advance or Face-to-face in Georgia	Tourist Visa	Children	\$220 USD (600 GEL) *Stipend for TLG	\$220 USD (600 GEL) *Stipend for TLG	\$300 - 400 USD (800 GEL - 1,100 GEL)	Housing provided by TLG program	Yes
<a href="#">Germany</a>	BA/BS preferred, not required	10 & 12 months	Sept & Jan	Aug, Christmas- 2 <sup>nd</sup> week in Jan	Face-to-face in Germany	Tourist visa, convert to contractor visa or EU Citizenship	Business Professionals, Children	\$1,100 - 2,000 USD (1,000 - 1,800 EUR)	\$1,000 - 2,200 USD (900 - 1,950 EUR)	\$3,000 - 4,500 USD (2,600 - 4,000 EUR)	Self-pay, Housing advice provided by employer	No
<a href="#">Greece</a>	BA/BS required	10 & 12 months	Sept & Jan	Aug, Christmas- 2 <sup>nd</sup> week in Jan	Face-to-face in Greece	EU Citizenship	Business Professionals	\$800 - 1,100 USD (700 - 1,000 EUR)	\$800 - 1,100 USD (700 - 1,000 EUR)	\$1,200 - 2,000 USD (1,000 - 1,800 EUR)	Self-pay, Housing advice provided by employer	No
<a href="#">Hungary</a>	BA/BS required	10 & 12 months	Sept & Jan	Aug, Christmas- 2 <sup>nd</sup> week in Jan	Phone/skype in advance or Face-to-face in Hungary	Tourist visa, convert to work visa or EU Citizenship	Business Professionals, Children	\$600 - 900 USD (167,800 - 252,700 HUF)	\$600 - 900 USD (167,800 - 252,700 HUF)	\$1,050 - 1,450 USD (265,450 - 366,600 HUF)	Self-pay, Housing advice provided by employer	No
<a href="#">Italy</a>	BA/BS required	10 & 12 months	Sept, Oct & Jan	Aug, Christmas- 2 <sup>nd</sup> week in Jan	Face-to-face in Italy	Tourist visa, student visa, EU Citizenship	Business Professionals	\$900 - 1,150 USD (800 - 1,000 EUR)	\$900-1500 USD (800 - 1,300 EUR)	\$1,200 - \$2,100 USD (1,050 - 1,850 EUR)	Self-pay, Housing advice provided by employer	No
<a href="#">Lithuania</a>	BA/BS required	10 & 12 months	May and Aug for a Sept start	Aug, Christmas	Phone/skype in advance or Face-to-face in Lithuania	EU Citizenship	Business Professionals, Children	\$500 - 900 USD (450 - 800 EUR)	\$500 - 900 USD (450 - 800 EUR)	\$900 - 1,500 USD (800 - 1,300 EUR)	Self-pay, Housing advice provided by employer	No
<a href="#">Poland</a>	BA/BS preferred, not required	9 & 12 months	Sept, Oct & Jan	Aug, Christmas- 2 <sup>nd</sup> week in Jan	Phone/skype in advance or Face-to-face in Poland	Tourist visa, convert to work visa EU Citizenship	Business Professionals	\$750 - 1,000 USD (2,500 - 3,400 PLN)	\$750 - 1,050 USD (2,500 - 3,600 PLN)	\$900 - 1,800 USD (3,450 - 6,900 PLN))	Self-pay, Housing advice provided by employer	No
<a href="#">Portugal</a>	BA/BS required	10 & 12 months	Sept & Jan	Aug, Christmas- 2 <sup>nd</sup> week in Jan	Face-to-face in Portugal	EU Citizenship	Business Professionals	\$1,300 - 1,700 USD (1,150 - 1,500 EUR)	\$1,300 – 1,700 USD (1,050 - 1,500 EUR)	\$2,300 - 2,900 USD (2,000 - 2,550 EUR)	Self-pay, Housing advice provided by employer	No



Country	Degree Requirement	Typical Contract Length	Peak Hiring Seasons	Expected Down Times	Interview Procedures	Visa Info	Typical Students	Average Monthly Cost of Living in \$ USD & Local Currency	Average Monthly Salary in \$ USD & Local Currency	Estimated Start-up Costs*	Housing	Reimbursed Airfare
<a href="#">Romania</a>	BA/BS preferred, not required	9 & 12 months	Sept & Jan	Aug	Most face-to-face in Romania; Some phone/skype in advance	Tourist visa, convert to work visa or EU Citizenship	Business Professionals	\$500 - 800 USD (2,100 - 3,350 RON)	\$300 - 1,000 USD (1,250 - 4,200 RON))	\$600 - 1500 USD (2,500 - 6,300 RON)	Self-pay, Housing advice provided by employer	No
<a href="#">Russia</a>	BA/BS preferred, not required	12 months	All Year Round	Aug	Phone/skype in advance or face-to-face in Russia	Work visa	Business Professionals, Children	\$500 - 1,000 USD (32,700 - 65,500 RUB)	\$500 - 1,400 USD (32,700 - 91,700 RUB)	\$1,000 - 1,800 USD (65,500 - 117,800 RUB)	Some Free Housing	No/Some return flight
<a href="#">Slovakia</a>	BA/BS preferred, not required	6 & 12 months	Sept & Jan	Aug, Christmas-2nd week in Jan	Phone/skype in advance or face-to-face in Slovakia	Tourist visa, convert to work visa or EU Citizenship	Business Professionals	\$500 - 800 USD (450 - 700 EUR)	\$500 - 800 USD (450 - 700 EUR)	\$1,100 - 1,700 USD (1000 - 1,500 EUR)	Self-pay, Housing advice provided by employer	No
<a href="#">Slovenia</a>	BA/BS preferred, not required	10 & 12 months	Sept & Jan	Aug, Christmas-2nd week in Jan	Most face-to-face in Slovenia; Some phone/skype in advance	EU Citizenship, Student Visa or Youth Mobility Visa	Business Professionals	\$850 - 1,250 USD (750 - 1,100 EUR)	\$850 - 1,250 USD (750 - 1,100 EUR)	\$1,200 - 1,850 USD (1,050 - 1,600 EUR)	Self-pay, Housing advice provided by employer	No
<a href="#">Spain</a>	BA/BS preferred, not required	10 & 12 months	Sept-early Oct & Jan	Aug, Christmas-2nd week in Jan	Face-to-face in Spain except government program in advance	Student visa, EU Citizenship	Business Professionals, Children (esp. government program)	\$500 - 1,000 USD (450 - 900 EUR)	\$800- 1,500 USD (700 - 1,300 EUR)	\$1,700 - 2,850 USD (1,500 - 2,500 EUR)	Self-pay, Housing advice provided by employer	No
<a href="#">Turkey</a>	BA/BS required	12 months	All Year Round	Aug	Phone/skype in advance or face-to-face in Turkey	Work visa	Business Professionals	\$550 - 900 USD (3,000 - 4,800 TRY)	\$550 - 1,150 USD (3,000 - 6,200 TRY)	\$1,100 - 1,800 USD (5,850 - 9,600 TRY)	Some free housing or housing subsidy	No
<a href="#">Ukraine</a>	BA/BS preferred	10 & 12 months	Mostly Sept / All year around	Aug, Christmas-2nd week in Jan	Phone/skype in advance or face-to-face in Ukraine	Tourist visa, EU Citizenship	Business Professionals, Children	\$600 - \$925 USD (16,000 - 25,000 UAH)	\$600 - \$925 USD (16,000 - 25,000 UAH)	\$1,200 - 1,800 USD (32,425 - 48,650 UAH)	Some Free Housing	No



## TEACHING ENGLISH IN THE MIDDLE EAST & NORTH AFRICA

From the shores of North Africa and the Eastern Mediterranean to the Persian Gulf, the Middle East incorporates a broad array of job markets for English teachers. Oil rich nations of the Persian Gulf offer some of the most lucrative ESL teaching positions in the world, but these markets can be small, competitive, and require advanced teaching credentials. There is also a high demand in other Middle Eastern countries, but the positions are more break-even in nature and don't require advanced teaching credentials.

The Middle East is an excellent region of the world to consider for your career teaching abroad if you are looking to:

- Find a job in advance of being in the country
- Save money
- Receive benefits such as accommodations, medical insurance, flight allowance, work visa assistance, etc.
- Find a job at virtually any time of the year
- Teach children or adults



*Keep in mind this is a general overview of all the teaching markets in the Middle East and a few exceptions may apply so please read the specifics of each country in the chart below.*

Country	Degree Requirement	Typical Contract Length	Peak Hiring Seasons	Expected Down Times	Interview Procedures	Visa Info	Typical Students	Average Monthly Cost of Living in \$ USD & Local Currency	Average Monthly Salary in \$ USD & Local Currency	Estimated Start-up Costs*	Housing	Reimbursed Airfare
<a href="#">Bahrain</a>	BA/BS required/ MA preferred	12 months	All Year Round/ May – Aug preferred	Islamic Holidays	Phone/skype in advance	Work visa in advance	Business Professionals, Children	\$650 - 1,050 USD (250 - 400 BHD) <b>Plus housing</b>	\$1,500 - 3,000 USD (550 - 1,100 BHD) <b>Can save \$800+ USD/Mo</b>	\$1,100 - 1,500 USD (400 - 550 BHD)	Free Housing or Housing Subsidy	Yes
<a href="#">Egypt</a>	BA/BS preferred, not required	6 & 12 months	All Year Round/ May – Aug preferred	Islamic Holidays	Face-to-face in Egypt; Some phone/skype in advance	Tourist visa convert to work visa	Business Professionals, Children	\$300 - 700 USD (5,200 - 12,300 EGP)	\$300 - 700 USD (5,200 - 12,300 EGP)	\$1,000 - 1,500 USD (17,600 - 26,400 EGP)	Self-pay, Housing advice provided by employer	Rarely

Country	Degree Requirement	Typical Contract Length	Peak Hiring Seasons	Expected Down Times	Interview Procedures	Visa Info	Typical Students	Average Monthly Cost of Living in \$ USD & Local Currency	Average Monthly Salary in \$ USD & Local Currency	Estimated Start-up Costs*	Housing	Reimbursed Airfare
<a href="#">Israel</a>	BA/BS required	6 & 12 months	All Year Round	Jewish Holidays	Face-to-face in Israel; Some phone/skype in advance	Tourist visa convert to work visa; right of return	Business Professionals, Children	\$1,000 - 1,500 USD (3,500 - 5,500 ILS)	\$700 - 1,500 USD (2,500 - 5,500 ILS)	\$1,500 - 2,000 USD (5,400 - 7,300 ILS)	Self-pay, Housing advice provided by employer	Rarely
<a href="#">Jordan</a>	BA/BS preferred, not required	6 & 12 months	All Year Round/ May – Aug preferred	Islamic Holidays	Face-to-face in Jordan; Some phone/skype in advance	Tourist visa convert to work visa	Business Professionals, Children	\$650 - 1,000 USD (450 - 700 JOD)	\$650 - 1,200 USD (450 - 850 JOD)	\$1,000 - 1,500 USD (700 - 1,050 JOD)	Self-pay, Housing advice provided by employer	Rarely
<a href="#">Kuwait</a>	BA/BS required/ MA preferred	12 months	All Year Round/ May – Aug preferred	Islamic Holidays	Phone/skype in advance	Work visa in advance	Business Professionals, Children	\$650 - 1,000 USD (200 - 300 KWD) <b>Plus housing</b>	\$1,500 - 3,300 USD (450 - 1,000 KWD) <b>Can save \$850+ USD/Mo</b>	\$1,000 - 1,500 USD (300 - 450 KWD)	Free Housing or Housing Subsidy	Yes
<a href="#">Lebanon</a>	BA/BS preferred, not required	6 & 12 months	All Year Round	Islamic Holidays	Face-to-face in Lebanon	Tourist visa convert to work visa	Business Professionals, Children	\$900 - 1,500 USD (1,400,000 - 2,300,000 LBP)	\$900 - 1,500 USD (1,400,000 - 2,300,000 LBP)	\$1,800 - 3,000 USD (2,700,000 - 4,500,000 LBP)	Self-pay, Housing advice provided by employer	No
<a href="#">Morocco</a>	BA/BS required	6 & 12 months	All Year Round	Islamic Holidays	Face-to-face in Morocco	Tourist visa convert to work visa	Business Professionals, Children	\$500 - 1,000 USD (4,600 - 9,500 MAD)	\$500 - 1,000 USD (4,600 - 9,500 MAD)	\$1,000 - 1,500 USD (9,500 - 14,300 MAD)	Self-pay, Housing advice provided by employer	No
<a href="#">Oman</a>	BA/BS required/ MA preferred	12 months	All Year Round/ May – Aug preferred	Islamic Holidays	Phone/skype in advance	Work visa in advance	Business Professionals, Children	\$800 - 1,550 USD (300 - 600 OMR) <b>Plus housing</b>	\$1,600 - 3,100 USD (600 - 1,200 OMR) <b>Can save \$800+ USD/Mo</b>	\$1,000 - 1,500 USD (400 - 600 OMR)	Free Housing or Housing Subsidy	Yes
<a href="#">Qatar</a>	BA/BS required/MA preferred	12 months	All Year Round	Islamic Holidays	Phone/skype in advance	Work visa in advance	Business Professionals, Children	\$800 - 2,000 USD (2,900 - 7,300 QAR) <b>Plus housing</b>	\$1,600 - 4,000 USD (5,800 - 14,600 QAR) <b>Can save \$800+ USD/Mo</b>	\$1,500 - 2,500 USD (5,500 - 9,100 QAR)	Free Housing or Housing Subsidy	Yes
<a href="#">Saudi Arabia</a>	BA/BS required/ MA preferred	12 months	All Year Round/ May – Aug preferred	Islamic Holidays	Phone/skype in advance	Work visa in advance	Business Professionals, Children	\$700 - 1,000 USD (2,600 - 3,750 SAR) <b>Plus housing</b>	\$1,500 - 3,000 USD (5,600 - 11,250 SAR) <b>Can save \$800+ USD/Mo</b>	\$1,000 - 1,500 USD (3,750 - 5,600 SAR)	Free Housing or Housing Subsidy	Yes
<a href="#">Turkey</a>	BA/BS required	12 months	All Year Round	Aug	Phone/skype in advance or face-to-face in Turkey	Work visa	Business Professionals	\$550 - 900 USD (3,000 - 4,800 TRY)	\$550 - 1,150 USD (3,000 - 6,200 TRY)	\$1,100 - 1,800 USD (5,850 - 9,600 TRY)	Some free housing or housing subsidy	No
<a href="#">UAE (including Dubai &amp; Abu Dhabi)</a>	BA/BS required/ MA preferred	12 months	All Year Round	Islamic Holidays	Phone/skype in advance	Work visa in advance	Business Professionals, Children	\$1,000 - 1,500 USD (3,700 - 5,500 AED) <b>Plus housing</b>	\$1,800 - 5,000 USD (6,700 - 18,500 AED) <b>Can save \$800+ USD/Mo</b>	\$1,500 - 2,500 USD (5,500 - 9,200 AED)	Free Housing or Housing Subsidy	Yes