

MILLENIA™ PRO-SHELVING

Transforming the way you work and store

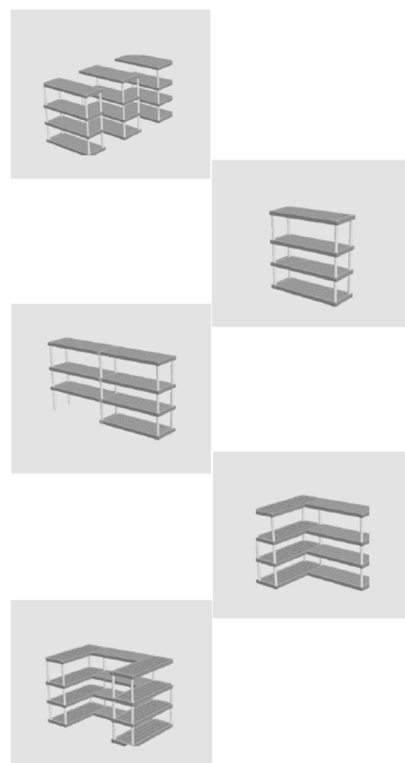


MILLENIA™ Pro-Shelving by Quantum™ combines easy-clean and cost efficient technologies, multifunctional design and lifetime warranty against rust and corrosion. Our dunnage support system adds stability, and increases weight capacity. Contact Quantum Consultants to assist you with complimentary layouts that will optimize your storage space utilization.



Guidelines

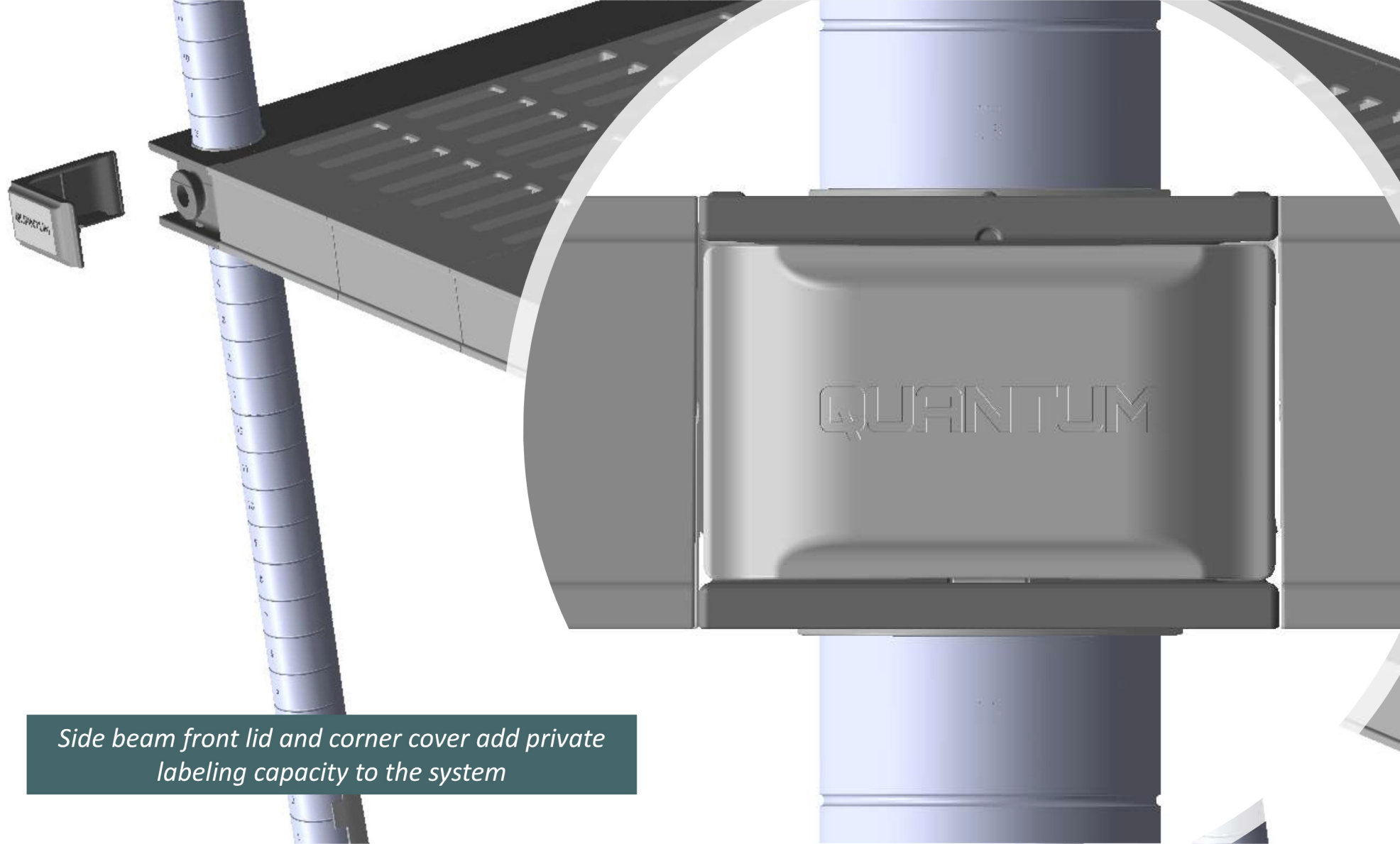
APPLICATIONS	<i>Hot, dry, high humidity, wet or walk-in cooler.</i>																												
MATERIALS	Beams: Pultrusion - of glass fibers and thermoset resin composite with built-in antimicrobial product protection. Side Connectors/Adjustable Foot/Shelf Conus Connector/Bumper: Reinforced nylon. Shelf Plates: Polypropylene with antimicrobial protection. Post Cap: Polypropylene.																												
DEPTHS	18", 21" and 24"																												
LENGTHS	24", 30", 36", 42", 48", 54", 60" and 72"																												
HEIGHTS	14", 26", 38", 50", 62", 74", 86" and 96"																												
MOBILE	Yes*																												
LOAD CAPACITY	Maximum load capacity evenly distributed: <table> <thead> <tr> <th></th><th>24" - 48"</th><th>54" - 72"</th></tr> </thead> <tbody> <tr> <td>Shelf only:</td><td>800 lb.</td><td>600 lb.</td></tr> <tr> <td>Bottom shelf with stand:</td><td>1,200 lb.</td><td>900 lb.</td></tr> <tr> <td>Shelf for corner unit:</td><td>400 lb.</td><td>-</td></tr> <tr> <td>Bottom shelf with stand for corner unit:</td><td>600 lb.</td><td>-</td></tr> <tr> <td>Stationary unit (4-tier):</td><td>2,000 lb.</td><td>2,000 lb.</td></tr> <tr> <td>Stationary unit (4-tier) with dunnage stand:</td><td>2,400 lb.</td><td>2,300 lb.</td></tr> <tr> <td>Mobile unit (4-tier):</td><td>750 lb.**</td><td>750 lb.**</td></tr> <tr> <td>Corner unit*** (4-tier):</td><td>1,600 lb.</td><td>-</td></tr> </tbody> </table>			24" - 48"	54" - 72"	Shelf only:	800 lb.	600 lb.	Bottom shelf with stand:	1,200 lb.	900 lb.	Shelf for corner unit:	400 lb.	-	Bottom shelf with stand for corner unit:	600 lb.	-	Stationary unit (4-tier):	2,000 lb.	2,000 lb.	Stationary unit (4-tier) with dunnage stand:	2,400 lb.	2,300 lb.	Mobile unit (4-tier):	750 lb.**	750 lb.**	Corner unit*** (4-tier):	1,600 lb.	-
	24" - 48"	54" - 72"																											
Shelf only:	800 lb.	600 lb.																											
Bottom shelf with stand:	1,200 lb.	900 lb.																											
Shelf for corner unit:	400 lb.	-																											
Bottom shelf with stand for corner unit:	600 lb.	-																											
Stationary unit (4-tier):	2,000 lb.	2,000 lb.																											
Stationary unit (4-tier) with dunnage stand:	2,400 lb.	2,300 lb.																											
Mobile unit (4-tier):	750 lb.**	750 lb.**																											
Corner unit*** (4-tier):	1,600 lb.	-																											
DUNNAGE STAND	Yes***																												
SHELF PLATE	Ventilated or Solid																												



**Recommended for units up to 60" long.*

***Due to the weight bearing capacity of steam casters.*

****Recommended for shelf lengths 54" and longer.*



Side beam front lid and corner cover add private labeling capacity to the system

MILLENIA™ PRO-SHELVING (ALL POLYMER)

- All polymer lifetime shelving system
- Versatile structure allows different design compositions and interconnections, without compromising weight capacity
- Easy to assemble, no tools required
- Adjustable shelves on 1" intervals
- Easily removable and dishwasher safe shelf plates
- Antimicrobial additive protects the system from bacteria, mold and mildew
- Private label capability
- Withstands temperature range from -36° to 190°F
- Wide range of accessories
- Complies with HACCP processes
- NSF approved

