

Recreate

5900 HOLLIS STREET
EMERYVILLE, CA

BELOW-MARKET SHORT-TERM
OFFICE SUBLEASE

3,360 SF | \$2.75 Industrial Gross
August 31, 2022 (longer term available)

CLICK FOR A VIRTUAL TOUR

Powered by  **Matterport**





PROPERTY HIGHLIGHTS

The Hollis Street Project is conveniently located within proximity to Emeryville's shopping and dining center.



FREE AND
ABUNDANT
PARKING

5900

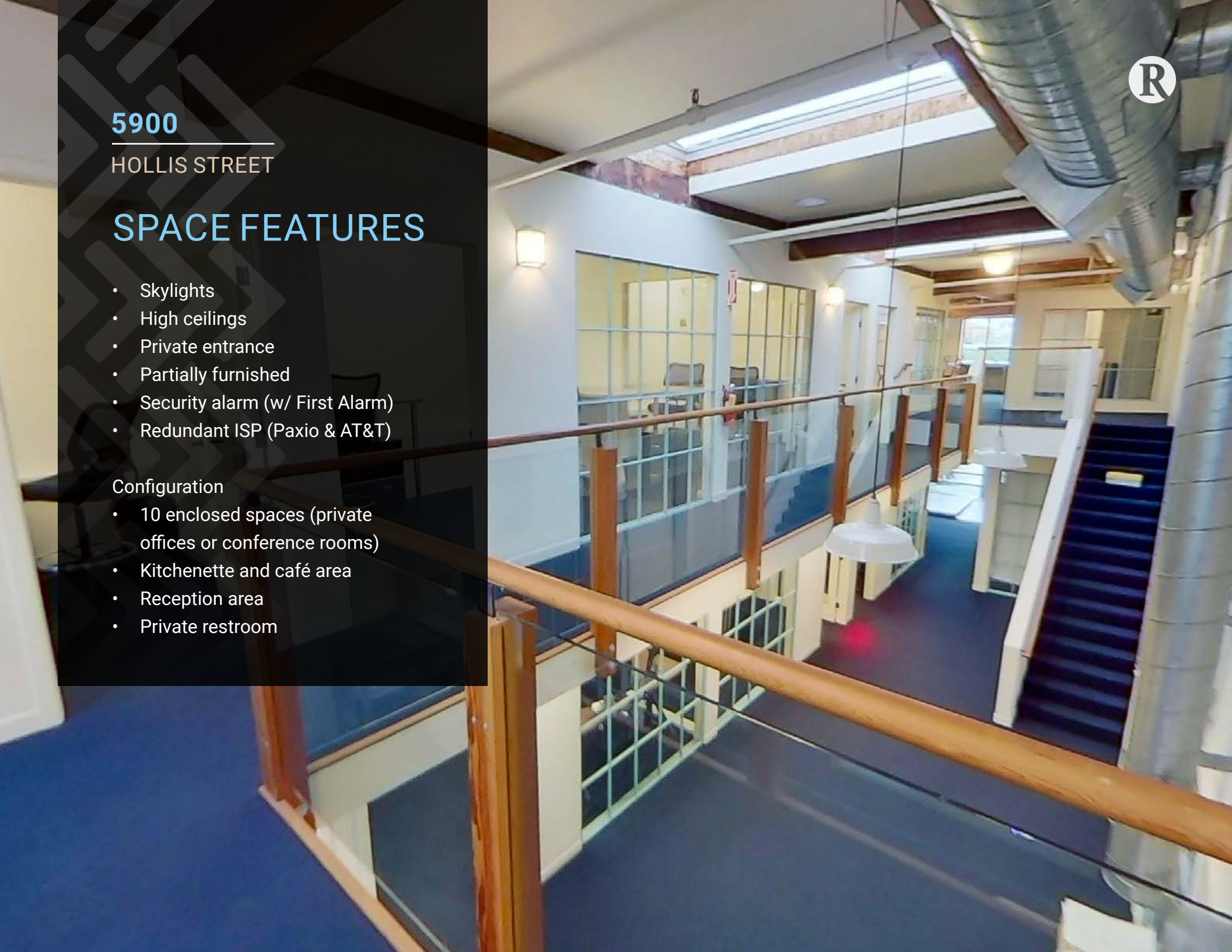
HOLLIS STREET

SPACE FEATURES

- Skylights
- High ceilings
- Private entrance
- Partially furnished
- Security alarm (w/ First Alarm)
- Redundant ISP (Paxio & AT&T)

Configuration

- 10 enclosed spaces (private offices or conference rooms)
- Kitchenette and café area
- Reception area
- Private restroom

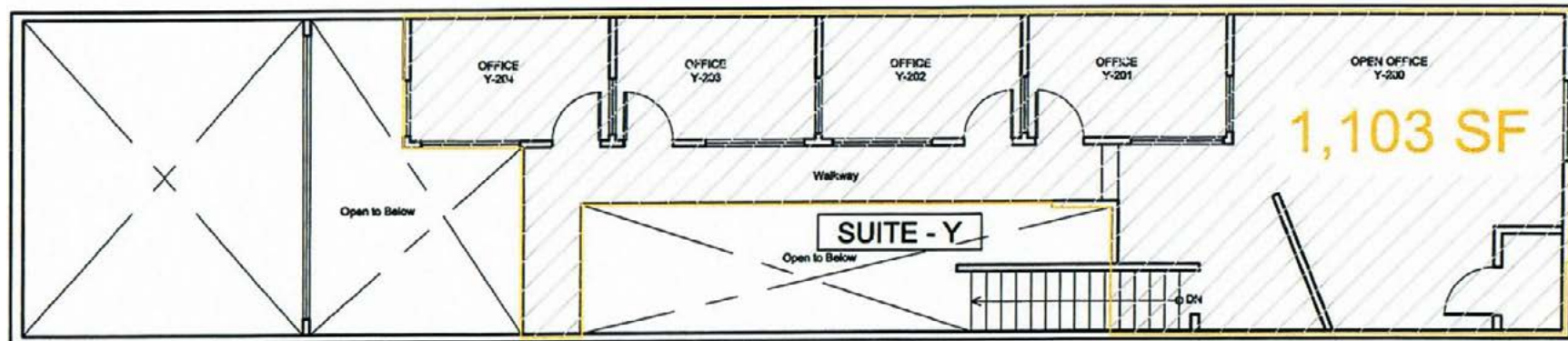




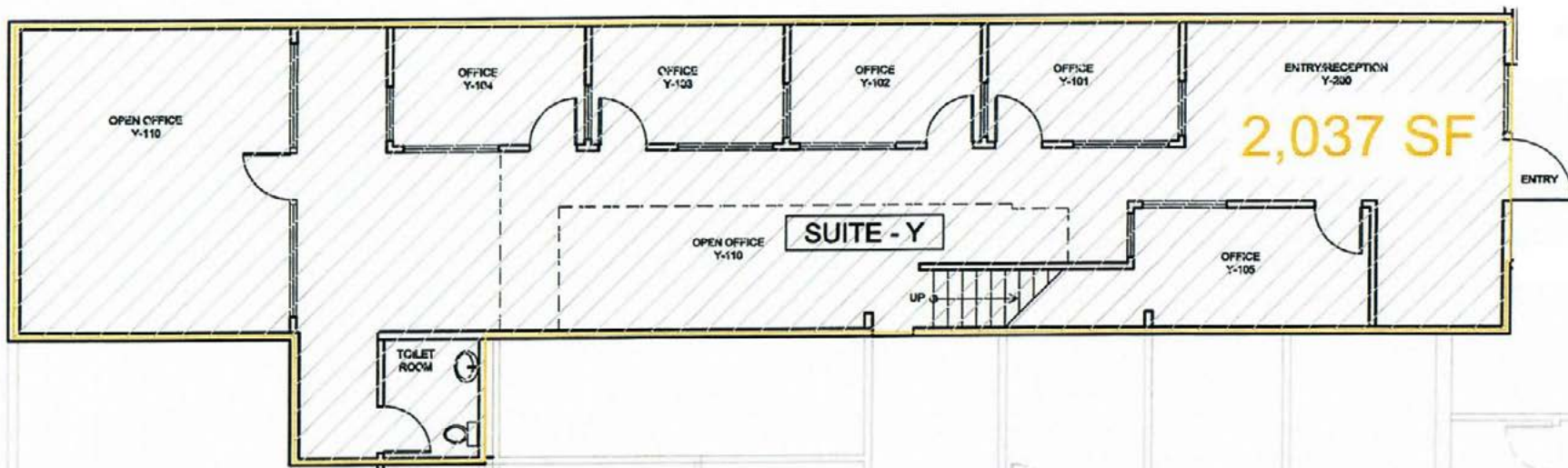
5900

HOLLIS STREET

GROUND FLOOR - 1,103 SF



MEZZANINE - 2,037 SF



Benjamin Osgood

Managing Director

benjamin@recreatecre.com

415.298.3331

CA License 01797827

The information contained in this document has been obtained from sources believed reliable. While Recreate does not doubt its accuracy, we have not verified such information and make no guarantee, warranty, or representation in its regards. It is your responsibility to independently confirm its accuracy and completeness. Any projections, opinions, assumptions or estimates used are for example only and do not represent the current or future performance of the property. The value of this transaction to you depends on tax and other factors which should be evaluated by your tax, financial and legal advisors. You and your advisors should conduct a careful, independent investigation of the property to determine to your satisfaction the suitability of the property for your needs. Recreate © 2021. All rights reserved.

Recreate

600 California Street, 15th Floor
San Francisco, CA 94108
CA License 02090127
www.recreatecre.com

