

2730

SAND HILL ROAD, #110
MENLO PARK, CA

**HIGH QUALITY SUBLEASE ON
SAND HILL ROAD**

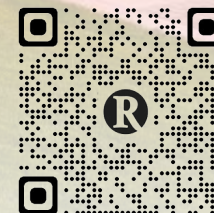
1,752 square feet | Available now

Sublease through 07.31.2024

Please inquire for price.

Recreate

600 California Street, 15th Floor
San Francisco, CA 94108
CA License 02090127
www.recreatecre.com



**Scan this code with your
phone's camera to view and
download this PDF.**





HIGH QUALITY SUBLEASE
2730 SAND HILL ROAD

HIGHLIGHTS

- Outdoor areas for work, lounging, and events
- Abundant parking with an EV charging station
- Immediate access to Highway 280
- Café & Conference Center
- Fitness Center

HIGH QUALITY SUBLEASE

2730 SAND HILL ROAD

SPACE DETAILS

- Brand new tenant improvements / never occupied
- Common Conference Room
- Common Kitchen
- 3 private offices







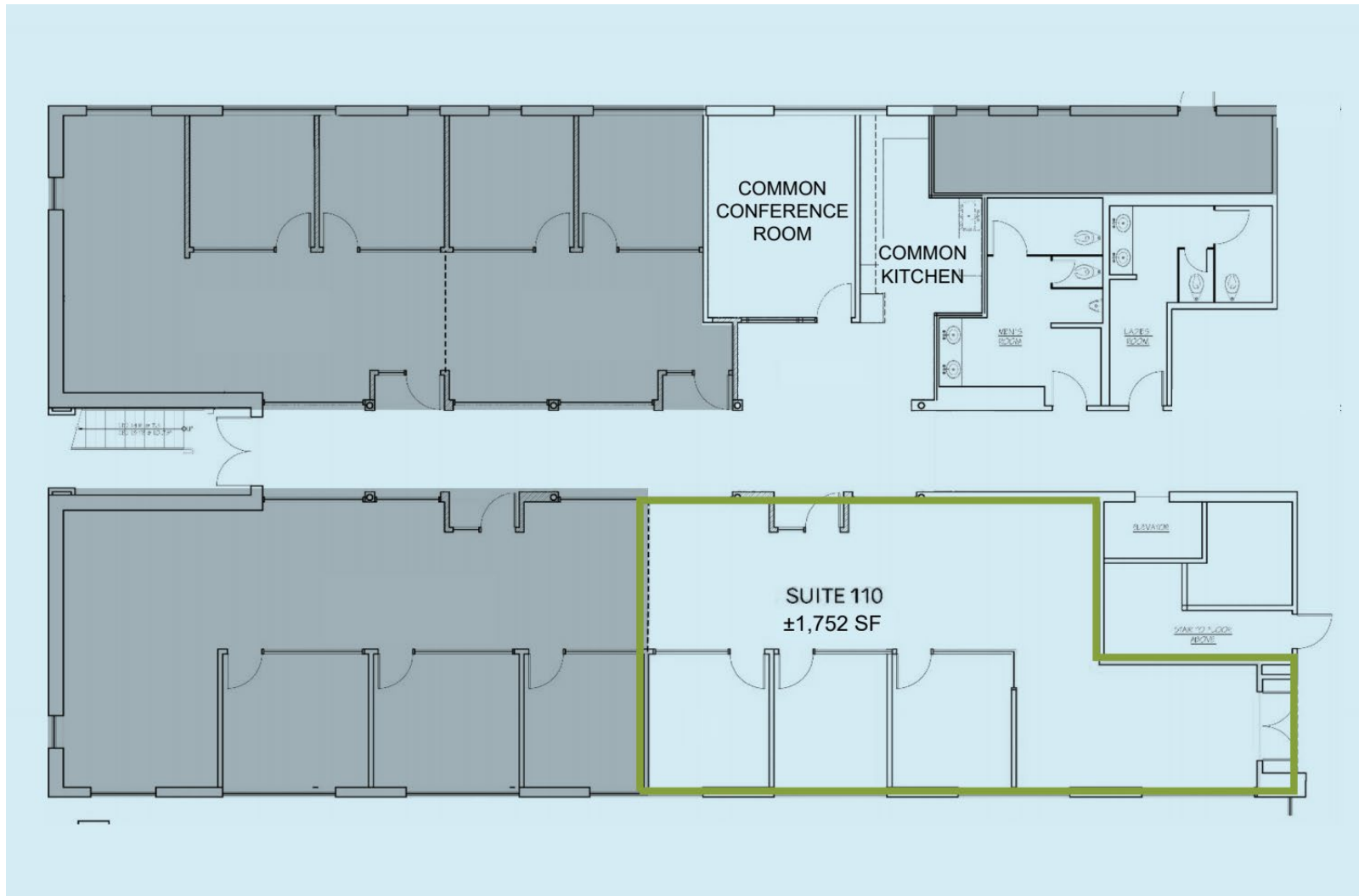
HIGH QUALITY SUBLEASE

2730 SAND HILL ROAD



FLOOR PLAN

1,752 square feet



CONTACT

Dylan Peters

Vice President

Dylan@RecreateCRE.com

925.997.8180

CA License 02029639

The information contained in this document has been obtained from sources believed reliable. While Recreate does not doubt its accuracy, we have not verified such information and make no guarantee, warranty, or representation in its regards. It is your responsibility to independently confirm its accuracy and completeness. Any projections, opinions, assumptions or estimates used are for example only and do not represent the current or future performance of the property. The value of this transaction to you depends on tax and other factors which should be evaluated by your tax, financial and legal advisors. You and your advisors should conduct a careful, independent investigation of the property to determine to your satisfaction the suitability of the property for your needs. Recreate © 2021. All rights reserved.

Recreate

600 California Street, 15th Floor

San Francisco, CA 94108

CA License 02090127

www.recreatecre.com



**Scan this code with your
phone's camera to view
and download this PDF.**