

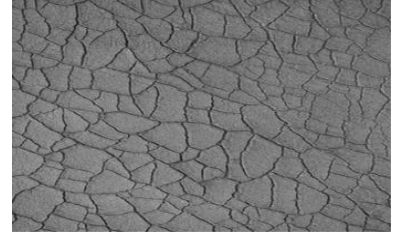


STONEY
Upholstery Leather

hillmann.

About the leather

STONEY is a soft, natural leather with a unique surface structure. The look of this unique real leather is inspired by nature. To preserve the naturalness, the surface structure of the complete cowhides is irregular, i.e. partially more or less pronounced. This makes every hide unique. The leather has been especially designed for homes, hotels and restaurants; its thickness of 1.6 mm gives it an outstanding grip. With STONEY, you can show your love of the unique.



Specifications

Name	STONEY
Hide size	Ø 5,0 m ²
Thickness	1,6 ± 0,1 mm
Light fastness	DIN EN ISO 105-B02 ≥ 3
Rub fastness dry	50 DIN EN ISO 11640 ≥ 3
Rub fastness wet	20 DIN EN ISO 11640 ≥ 3
Rub fastness sweat	20 DIN EN ISO 11640 ≥ 3
Tear strength	DIN EN ISO 3377-1 ≥ 20 Newton

Hillmann leather is finest leather in best quality, so you can enjoy your leather for a long time.

Best regards,

Your Leder-Hillmann Team