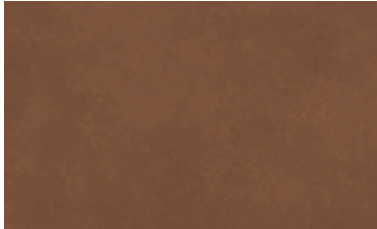


SENATO
Upholstery Leather

hillmann.

About the leather

SENATO is an exclusive semi-aniline leather with an elegant, fine-grained surface. The vacuum-dried leather boasts a beautiful, deep, silky glow with an exceptional touch. A subtle two-tone finish accentuates this leather's luxurious appearance. SENATO shows a timeless sense of style and is well suited to both home and contract settings.



Specifications

Name	SENATO
Hide size	Ø 5,0 m ²
Thickness	1,1 ± 0,1 mm
Light fastness	DIN EN ISO 105-B02 ≥ 4
Rub fastness dry	500 Touren DIN EN ISO 11640 ≥ 4
Rub fastness wet	80 Touren DIN EN ISO 11640 ≥ 3-4
Rub fastness sweat	50 Touren DIN EN ISO 11640 ≥ 3-4
Tear strength	DIN EN ISO 3377-1 ≥ 20 Newton
Flammability	DIN EN 1021 Part 1/2

Hillmann leather is finest leather in best quality, so you can enjoy your leather for a long time.

Best regards,

Your Leder-Hillmann Team