

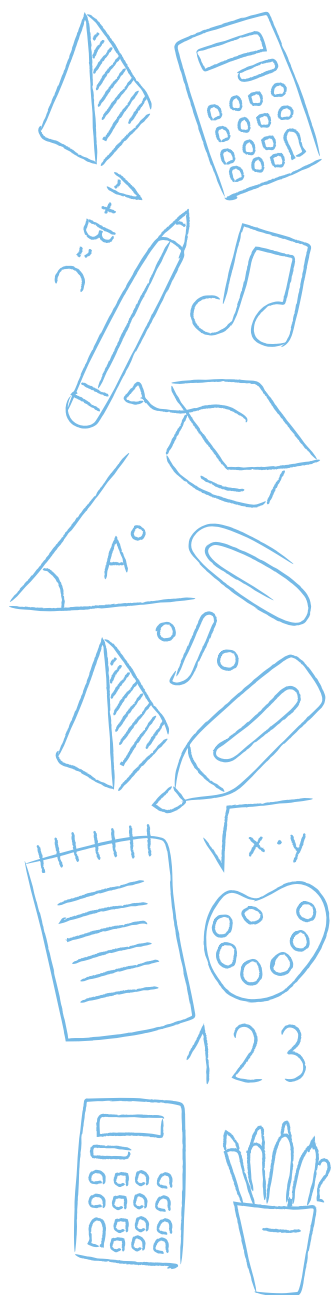
COVID-19
gov.ky/coronavirus



General Guidance

Re-opening of schools,
early childhood care
and education centres
after mandatory closure
due to COVID-19

June 2020



Due to the COVID-19 pandemic, all educational institutions in the Cayman Islands have been closed since the 16th of March 2020, in response to directives from the Ministry of Education, Youth Sports, Agriculture and Lands (MEYSAL). All schools and some Early Childhood Care and Education Centres (ECCE) have been undertaking remote and flexible learning and care since that date.

On the 23rd April 2020 it was announced by MEYSAL that all educational institutions in the Cayman Islands will remain closed for the rest of the 2019/2020 academic year.

The purpose of this guidance is to set out the conditions and procedures under which schools and ECCE centres will re-open on-site.

COVID-19
gov.ky/coronavirus



Conditions required for re-opening



MINISTRY OF
EDUCATION, YOUTH, SPORTS,
AGRICULTURE & LANDS
CAYMAN ISLANDS GOVERNMENT

Conditions required for re-opening

Schools and ECCE centres will not re-open until the country (or island, subject to policy directive) has reached Suppression Level 2 of the Cayman Islands Government (CIG) COVID-19 Suppression Levels (see Appendix 1), or as per directions from the Public Health Department. At Level 2, borders and immigration remain controlled (with mandatory quarantine requirements), the disease is contained and although the risk of community transmission still remains, positive cases are restricted to sporadic (single or isolated cluster) outbreaks due to household (not community) transmission.

At Suppression Level 2, all students can go to schools and ECCE centres/Nursery Class. The only exceptions are children who are:

- sick;
- currently have any COVID-19 symptoms;
- are in isolation;
- are subject to contact tracing;
- are awaiting for the result of a test.

Public Health Department will provide further guidance if necessary.

All staff are expected to return to school unless they produce a medical certificate from the competent authorities indicating they are unfit for, or unable to work.

Distance learning for students in schools will still be available for those who need to remain at home. This will likely be in the form of learning packets or recorded online lessons where possible. The exception to this would be students who are sick and unable to complete work. It will be necessary for schools to look at how these students will close any gaps resulting from their time away from active schoolwork.

Enhanced hygiene requirements will be required for all aspects of the school and ECCE centre/Nursery Class day.

If suppression levels regress to Level 3 or higher, Government will make further directives as to whether to close schools and ECCE centres/Nursery Class again and revert to distance learning or continue to keep schools and ECCE centres/Nursery Class open under more restrictive conditions. Guidance for such conditions in ECCE centres/Nursery Class are provided in Appendix 2. The Public Health Department will advise whether guidelines in Appendix 2 should be followed at any other Suppression Level.

COVID-19
gov.ky/coronavirus



Procedures for re-opening



MINISTRY OF
EDUCATION, YOUTH, SPORTS,
AGRICULTURE & LANDS
CAYMAN ISLANDS GOVERNMENT

Procedures for re-opening

Schools re-opening

The following procedures shall be established PRIOR to the re-opening of schools. School leaders will complete a risk assessment and develop a school reopening plan (Template to be provided with this document).

Staged return to on-site schooling

When the return to on-site schooling occurs it will take place in two stages to provide time for the Public Health Department and Government to monitor and evaluate the effects that the (staged) return to school has on the increased movement of people and transmission within the community.

Stage 1

- Some year groups (Nursery, Reception, Years 1, 2, 6 Primary and Years 7, 10-12 Secondary), and all students in specialist schools/units will return to on-site schooling first. Discussions and agreements for Creek and Spot Bay Primary will be held.
- The existing remote learning program will not continue for these year levels.
- Some year groups (Years 3, 4, 5 primary and Years 8 and 9 Secondary) who can learn from home must continue to do so

ensuring that there is adequate curriculum provision and access to digital devices.

Hygiene Protocols

- Wearing of masks will be as per the guidance from the Public Health Department.
- Hygiene protocols must be adhered to, these include regular handwashing and hand sanitization.
- Cleaning of high contact surfaces throughout the day.

Attendance

- All students in Years 3, 4, 5 Primary and Years 8 and 9 Secondary are required to engage in remote learning morning and afternoon where attendance is formally recorded.
- As per established practice, students will not be required to attend school if they have a medical certificate indicating they are unfit for or unable to attend school or those who have a compromised immune system.
- School Leaders will make the necessary arrangements to ensure social distance protocols are adhered to within classrooms; considering square footage of classes and

number of students.

- These arrangements will apply to all Government Schools, and for private schools up to the furthest extent of the allowance for phased return. Private schools may choose to open fewer year groups, or none at all. They may not open more year groups than the directive for Government schools.

School Staff

- During Stage 1 all school staff are expected to attend on-site.
- As per established practice, staff will not be required to attend school if they have a medical certificate indicating they are unfit for or unable to work or who are the following categories:
 - Aged 60 years and over and have chronic medical conditions
 - Any staff member who has been advised to isolate by Public Health.
 - Staff will continue to be supported to manage their wellbeing through their schools and the Employee Assistance Program.

Teachers with school-aged children

Between stage 1 and stage 2, where teachers returning to school have school-aged children in stage 2, for whom at-home arrangements cannot be made, those children can attend the school at which they are enrolled. Details of these arrangements will be provided in due course.

Stage 2 (two weeks later)

- All remaining students (Years 3, 4, 5 Primary and Years 8, 9 Secondary) return to on-site schooling.
- Students in all year levels will be expected to return to school, unless exempted as per above.

Hygiene protocols

- Wearing of masks will be as per the guidance from the Public Health Department.
- Hygiene protocols must be adhered to, these include regular handwashing and hand sanitization.
- Cleaning of high contact surfaces throughout the day.

Attendance

- Schools will not offer a remote learning program except to students unable to attend school for the same reasons outlined in Stage 1.
- This will likely be in the form of learning packets or online classes.
- **Exception:** Students who are sick and unable to complete work. It will be necessary for schools to look at how these students will close any gaps resulting from their time away from active schoolwork.
- Parents and Guardians are required to contact school as soon as possible if their child is currently:
 - Sick
 - Exhibiting COVID-19 symptoms
 - In isolation



- Subject to contact tracing
- Awaiting for the result of a COVID-19 test
- Isolating under the advice of Public Health

School staff

All staff will attend on-site. Staff will continue to be supported to manage their wellbeing through their schools, the Employee Assistance Program and other relevant service providers.

School staff returning to work on-site and exemptions

All teachers and school staff will be expected to continue to attend work on-site. The only exceptions are those staff who have a medical certificate indicating they are unfit for or unable to work, or who meet the criteria set by the CMO and outlined below:

- Aged 60 years and over and have chronic medical conditions
- Of any age and have a compromised immune system
- Any staff member who has been advised to isolate by Public Health.

Coronavirus (COVID-19) testing for school staff

Testing of staff will follow guidelines for the Public Health Department.

Recruitment of new staff (Public Schools Only)

Given the closure of our borders until September 1st, recruitment of overseas staff

is more problematic. Schools must contact HR/Acting Director DES if they need to recruit staff for the new school year.

HR and DES will develop a system for recruitment which may include wider use of Assistant Teachers as a temporary measure, in the event that schools reopen with staff shortages and on-island teachers are unavailable for hire. Qualified Caymanians will be given priority.

ECCE Centres re-opening

ECCE Centres/Nursery Class (Cayman Brac)

Caring for young children in groups requires special consideration during the time of COVID-19. Consideration for reopening of early childhood care and education (ECCE) centres/Nursery Class throughout the suppression phases should include that children of this age group require constant care and supervision. Therefore, if there is an increase in variety and number of businesses reopening, increased availability of care for children of the employees who are returning to work will be required.

Social distancing is also extremely difficult, if not impossible, with young children. It is also not recommended that children under 2 years old wear masks. These add to the risks of transmission of COVID-19 at ECCE centres/Nursery Class, and must be taken

into consideration as the Government makes decisions concerning reopening of ECCE centres. At all times, strict sanitation protocols, hand hygiene, respiratory protocols and adherence to illness policies and Public Health guidelines must be vigilantly observed. These will all help to lower the risk of transmission of COVID-19, but will not eliminate the risk, unfortunately.

The health and well-being of children and staff should be prioritised. ECCE centre/Nursery Class management should ensure that they have information to share with parents and staff members in the event counselling or mental health support is required. Staff should be vigilant when caring for children to notice any signs of difficulties the child may be experiences with regards to health and well-being. The relationship between children and adults in the ECCE centre upon reopening is especially important. As per the Education Regulations, 2017:

43. (2) An early childhood care and education centre shall provide a safe, nurturing and caring environment for children, where interaction is meaningful and engaging to enhance children's learning and holistic development and promotes positive reciprocal relationships.

Children will return to ECCE centres/Nursery Class displaying a variety of behaviours, challenges and amount of growth. Some children may have particular difficulty leaving their parents after being isolated

with them. Others may have experienced abuse or neglect or other trauma while in isolation. Some children may be so excited about returning to the ECCE centre/Nursery Class that they may be overactive. Some children may be withdrawn, unregulated or fearful. ECCE centre/Nursery Class staff must utilise positive guidance techniques, prepare the environment and schedule so that the children can engage in child initiated, purposeful play for the majority of their awake time at the centre. Close monitoring and recording of children's development is also especially important so that appropriate activities can be planned to meet each child's need. Children will not be at the same development stage as they were prior to the closure of educational institutions, and care must be taken to ascertain the child's level of development upon return, as well as the progress monitoring thereafter.

ECCE centre/Nursery Class child attendance

- All children may attend their early childhood centre after reopening under Stage 2, unless it is advised by the child's health care practitioners that he/she should not attend due to health or medical reasons or as directed by the Public Health Department.
- Children should not attend the early childhood centre/nursery class if they are sick or have any COVID-19 symptoms, are in isolation, have come into contact with a person confirmed or suspected to have COVID-19, subject to tracing, or are

awaiting for the result of a test.

- Parents/carers of children with complex medical needs (including but not limited to underlying respiratory and cardiovascular conditions), should seek advice from the child's medical/health practitioner to support informed risk assessment and decision-making about attending an ECCE centre/Nursery Class is suitable and provide evidence of this advice to the centre.

ECCE/Nursery Class Staff

- Return to work for all staff members is allowed.
- Staff will not be required to attend school if they have a medical certificate indicating they are unfit for or unable to work.
- Staff who are sick or have any COVID-19 symptoms, are in isolation, have come into contact with a person confirmed or suspected to have COVID-19, are subject to tracing, or are awaiting for the result of a test should not return to work at this time.
- All staff are expected to volunteer for testing prior to the return of children irrespective of whether they have symptoms of coronavirus (COVID-19).

Recruitment of new staff

Recruitment of staff is likely to be more problematic. ECCE centres should contact MEYSAL if they are experiencing difficulty in recruiting staff for the new school year so that MEYSAL can have the information on hand for consideration when advising government/Education Council.

ECCE Space Ratio

- Requirements as per the Education Regulations, 2017 of 20 sq. ft. of useable indoor space per child is in effect.
- Outdoor space will remain at 40 sq. ft. per child as per the Education Regulations, 2017.

ECCE Adult: child ratio

- Adult: child ratios as per the Education Regulations, 2017 should be adhered to.
- As core groups are not required in Stage 2, adults are able to care for and interact with all children.
- If ECCE centres are experiencing staff shortages, it is the centre's responsibility to communicate this immediately with the ECCE Unit who will then liaise with the Education Council regarding ratios due to the impact of COVID-19.

COVID-19
gov.ky/coronavirus



Health and Well-being



MINISTRY OF
EDUCATION, YOUTH, SPORTS,
AGRICULTURE & LANDS
CAYMAN ISLANDS GOVERNMENT

Health and Well-being

The COVID-19 pandemic will have had impacts on mental health and well-being. Common reactions include (but are not restricted to):

- Fear and anxiety – particularly in this context of return to school
- Anger and frustration – e.g. over lost opportunities and changes of expectations
- Confusion
- Sadness – including grief related to bereavement (particularly those who have friends and families overseas)
- Denial
- Every school and ECCE centre/Nursery Class should arrange access to a suitably qualified mental health practitioner (e.g. Psychologists, Mental Health Nurses,) and/or counsellor.
- Mental health practitioners and counsellors will work flexibly, based on the needs and priorities of their school and students and their role includes:
 - Provision of direct counselling support to students and other early intervention services
 - Coordination of supports for students with more complex needs
- Contributing to whole-school approaches to health and well-being, including Life-skills (Personal, Social and Health Education) classes.

Trauma

- Adults should be especially vigilant when interacting with children with regards to detection of any type of trauma, including abuse and/or neglect, which that child may have experienced when isolated from society.
- Additional training or refreshers may be required for schools and ECCE centres in recognizing trauma in the children.
- Child safeguarding reporting protocols must be followed if there is a suspicion of abuse or neglect.
- Support for the child's mental health must be provided through referrals to relevant agencies and trauma sensitive practices throughout the school or ECCE centre.

Welcoming children back to school

- It can be reasonably expected that most children will settle back into their school/ECCE centre over time as routines are re-established, however for some students more support will be required.
- Some families and children will be anxious about returning to their school or ECCE centre/Nursery Class, while others will be relieved and excited.
- Expressing pleasure at seeing everyone back and together again, in a warm and welcoming manner, will make a significant difference.

- The first priority must be all children's well-being and settling back into school/ECCE centre/Nursery Class so it will be important that schools and ECCE centres/Nursery Class work with children and their families to hear how the lockdown period has gone and to inform them of the support that will be offered to keep learning progressing.
- Schools and ECCE centres/Nursery Class should work with their children, parents and carers to help in re-establishing routines for sleep, socialising, physical activity, and learning, together.

Talking About COVID-19

- Information about COVID-19 should be shared in an age appropriate manner with young children who ask for information.
- Staff should be sensitive and allow children the opportunity to share their feelings regarding their experience during the COVID-19 shelter in place order. This could include giving children opportunities to express themselves through the arts.
- Staff should not "overshare", design lessons around COVID-19 or force children to discuss the topic. However, information on hygiene and respiratory protocols should be shared with children in age appropriate ways.

Well-being guidance for teachers under Suppression Level 2 or reopening as directed by the Public Health Department

- Some children might need additional

support when they return to their school/ECCE centre/Nursery Class.

- Take notice of:
 - Children who refuse to go to school/ECCE centre/Nursery Class
 - Periods of absence or increased sickness
 - Changes in behaviours that do not settle or are out of character.
- Further, separate guidance will be produced to support Health and Well-being in due course.

Children with a disability or requiring learning support

- Students with a disability or requiring learning support should expect to return to school to learn alongside their friends and see their teachers again, unless they have an underlying health condition, are sick, being contact traced, or are isolating.
- For children who can't be in school it will be important to sustain online learning.
- Schools/ECCE centres/Nursery Class should continue to talk with children who remain at home, and their parents and carers about:
 - How long this might go on for
 - Whether the children have the appropriate technology
 - How they might be supported until they return
 - How support staff might be able to work with the child, either in their home or remotely if possible.

COVID-19
gov.ky/coronavirus



Essential actions moving forward



MINISTRY OF
EDUCATION, YOUTH, SPORTS,
AGRICULTURE & LANDS
CAYMAN ISLANDS GOVERNMENT

Essential actions during the return of schools and ECCE centres/Nursery Class

Cleaning

- Routine environmental cleaning will be enhanced and will, include progressive cleaning throughout the day, to ensure that risks of transmission are reduced for high-touch services.
- Windows should be open where possible at times during the day to promote air flow.
- Hand sanitizers and tissue will be made available in all learning and office spaces.
- A deep clean of the facility is required whenever it is directly impacted by coronavirus (COVID-19). Approval to reopen must be obtained from the Public Health Department.
 - Government Schools and Nursery Class will arrange for deep cleaning through the Department of Education Services.
 - The Government Day Care Facility on Cayman Brac will arrange for deep cleaning through District Administration.
 - Private schools and ECCE centres are required to arrange for deep cleaning through private contractors.

Physical distancing

The need for physical distancing and the wearing of masks will be as per the guidance from the Public Health Department.

Students in schools should be spaced out as much as possible:

- Where possible, classroom furniture should be rearranged to provide maximum space between tables.
- Seating arrangements should also be changed to maximize distance between students.
- Plan to use fixed seating plans for students, so that they always sit in the same position in class and/or exam style seating should also be considered where practical and appropriate.
- All staff members should adhere to the 6 feet physical distancing criteria with other adults, wherever possible. This includes coworkers and any other adult entering the school or ECCE centre/Nursery Class (until Public Health guidance changes).
- Staff should use separate offices where possible.
- Mixing of staff and students between rooms should be avoided where possible.
 - It is acknowledged that staff may need to move between rooms to support colleagues and students but should still observe social protocols.
 - Staff in schools/ECCE centres/Nursery Class supporting children with complex health needs will need to regularly assist

different groups across the course of the day. In these situations, staff should use best practice hand hygiene and PPE protocols.

- Schools and ECCE centres/Nursery Class should consider staggering the start and finish of the school day (where this does not extend the school day to an unreasonable degree) with adjusted arrangements for drop off and pick up, in order to reduce the gathering of large groups at any one time.
- Access to the school and ECCE centre/Nursery Class site should be restricted for anyone other than immediate school and ECCE centre/Nursery Class staff and students.
 - A system for recording persons who enter the premises throughout the day should be established. Information such as name, time of entry and exit, reason for entry and contact details should be collected. The need to collect this information should be clearly communicated to all stakeholders. This is to ensure information is retained in the event contact tracing will be necessary.
 - All maintenance and service to the facility must be completed when no child is in the school or ECCE centre/Nursery Class. If emergency maintenance services are necessary, all service providers who enter the centre/nursery must adhere to strict hand hygiene protocols and social distancing requirements.
 - No person, for any reason, should enter the school or ECCE centre/Nursery Class

who has respiratory illness or symptoms of respiratory illness.

- No person, for any reason, who has been knowingly exposed to a person with confirmed or suspected COVID-19, shall enter the school or ECCE centre/Nursery Class.
- Arrangements for how parent-teacher meetings and interviews are conducted should be reviewed and adjusted appropriately wherever possible.
- Breaks and time outside should be staggered, if staffing allows, to limit contact between groups.
- Student group work in schools should be suspended, except where students are collaborating using digital technologies.
- Except for very young students, student work should either be handed to the teacher for feedback or transmitted via ICT devices rather than feedback being provided immediately by the teacher in close proximity to the student.
- Where students line up to enter class, they should be encouraged to keep 6 feet between each other where possible.
- Where students usually enter and leave class in an unstructured manner, this practice should be changed so students enter in a more structured way, so a distance of 6 feet can be maintained.
- Greetings should involve non-contact where age appropriate.
- Schools and ECCE centres/Nursery Class should suspend any large gatherings of staff

and children at one time, such as whole school or sub-school (e.g. Year Group or House) assemblies and large information evenings.

- Contact tracing registers must be in place. Each class must be registered and seat plans confirmed wherever possible.

School sport

All inter-school/ECCE centre sporting events and competitions are postponed until further notice.

School bus services

- Services will operate as normal on all existing school/ECCE centre bus networks and will be subject to any directives from the Public Health Department.
- Government Schools and ECCE centres will be notified of any changes to the details of bus routes and times by the DES and will inform their parents.
- Private Schools and ECCE centres will inform their parents of any changes to the details of bus routes and times directly.
- All school buses will undergo cleaning and sanitization after each bus run, including but not limited to:
 - Handrails
 - Arm rests
 - Steering wheels
 - Doors
 - Seats
 - Floor
- Bus operators will enforce physical distancing measures around the drivers' seat by restricting access to the first rows of seats.

- Students will be asked to keep their distance from others while travelling and this will be enforced by the bus wardens on routes where they are assigned.
- Parents and schools will be expected to ensure students follow physical distancing at bus stops and bus parks.
- Transport for students with additional needs services will operate as normal although social distancing protocols may require an increased number of journeys, alteration to pick-up times and staggered starts and finishes to school/ECCE centre/Nursery Class.

Graduation and school leaving ceremonies

- Schools and ECCE centres/Nursery Class should review their arrangements for graduation and/or school leaving in the context of the COVID-19 pandemic and the restrictions on numbers at social gatherings. Guidance for Government School high school graduations will be provided.

ECCE Centres Service Model

Purposeful play as per the centre plan remains during the majority of the child's awake time spent at the centre.

COVID-19
gov.ky/coronavirus



Health and Hygiene



MINISTRY OF
EDUCATION, YOUTH, SPORTS,
AGRICULTURE & LANDS
CAYMAN ISLANDS GOVERNMENT

Health and Hygiene

Food hygiene

- Food hygiene guidelines from Public Health and Department of Environmental Health must be strictly adhered to. School Leaders should make the necessary arrangements for meals which will observe the distancing protocols eg. Meals in classrooms/canteens.

Hand hygiene and hand washing

- Staff and children are encouraged to regularly perform hand hygiene, including on arrival to school/ECCE centre and before and after meals.
- Staff should direct, and where possible, supervise hand washing at a minimum of before and after eating food, either through washing hands with soap and water, or use of hand sanitizer according to need.
- Where soap and water are not readily available, hand sanitizer should be provided in every occupied room. Staff and children actively encouraged to use this (under adult guidance for younger children). Staff and children unable to use hand sanitizer should be encouraged to wash their hands more regularly.
- Staff and children should be encouraged to keep as much distance as possible and as developmentally appropriate between each other when eating. Some children with complex needs and young children will require assistance with feeding (see below).

- Sharing of food should be actively discouraged.
- The highest standards of hygiene should be practiced in staffrooms. This includes:
 - Washing drink and food containers with hot water and detergent.
 - Regularly wiping down spraying surfaces with disinfectant.

Routine care

- Standard precautions must be taken when providing routine care and/or assistance (for example the use of gloves for nappy changing, toileting, feeding students with significant needs).
- Staff should always wash hands with soap and water or use a hand sanitizer before and after performing routine care.
- Advice on whether adults should wear masks etc. will be guided by the Public Health Department, however additional Personal Protective Equipment (PPE) is not expected to be required for the regular care for children who are well, unless such precautions are usually adopted in the routine care of an individual child. Hand hygiene, cough etiquette and environmental cleaning are more important for reducing risk.
- Use of additional PPE may be considered when a child requiring routine care develops symptoms with compatible symptoms with

coronavirus (COVID-19), such as fever, cough or sore throat and is awaiting to be sent home.

- At no time, unless individually required in writing by their medical practitioner, should children under 2 years old be made to wear a mask.
- Guidance on what is appropriate may change often, so it is recommended that schools and ECCE centres/Nursery Class stay updated with information from the Public Health Department. (Find current recommendations in the attached document - Interim COVID-19 Guidelines for Water, Sanitation, Hygiene, and Waste Management in Institutional Facilities, Communities and Home Settings from the Caribbean Public Health Agency)
- **If an emergency situation develops always call 911.**

First aid (non-emergency)

- Standard precautions should be adopted when providing first aid.
- Always wash hands with soap and water or use a hand sanitizer before and after providing first aid. Advice on whether adults should wear masks etc. will be guided by the Public Health Department, however additional Personal Protective Equipment (PPE) (for example face masks) is not expected to be required for standard first aid on children and staff who appear to be well. Hand hygiene, cough etiquette and environmental cleaning are more important for reducing risk.

- Use of additional PPE should be considered when a staff member or child becomes unwell and is awaiting to be sent home, and appears to have compatible symptoms with coronavirus (COVID-19), such as fever, cough or sore throat. Approved personnel such as school nurses should always be contacted in such circumstances.
- At no time, unless individually required in writing by their medical practitioner, should children under 2 years old be made to wear a mask.
- **If an emergency situation develops always call 911.**

Playground equipment

- If access to the school's/centre's playground equipment (e.g. climbing frames, basketball hoops) is controlled and not open to the public, this equipment can stay open for child use.
- Children should be supervised to wash their hands before and after using playground equipment.
- To further minimise risk, schools and ECCE centres/Nursery Class should consider strategies to avoid mixing between classroom groups. For example:
 - Limiting the use of school/ECCE centre/Nursery Class playground equipment to one group of children at a time
 - Rotating the use of playground equipment between groups on a daily/weekly basis, as age appropriate.

- Schools and ECCE centres/Nursery Class with play equipment accessible to the public outside of school/centre hours should ensure that equipment is not accessible to children during school/centre hours. School Leaders are advised to either:

- Close up (or remove) play equipment accessible to the public where possible
- Tape up equipment accessible to the public.

Toys, equipment and resources

All toys, equipment and resources used at this time must be cleaned each day based on the sanitisation requirements recommended by Public Health.

Drinking water

- Children should bring their own water bottle for use (and refilling) at school/centre. Children should not drink directly from drinking fountains. Wherever possible drinking fountains should be switched off and/or rendered inaccessible as per school policy.
- Arrangements for refills should be managed by the school/centre. Schools and ECCE centres are reminded to flush all refill stations that are to be available for staff and students for water bottle refills for up to five minutes following extended periods of non-use.

Health

- Anyone who feels unwell should not

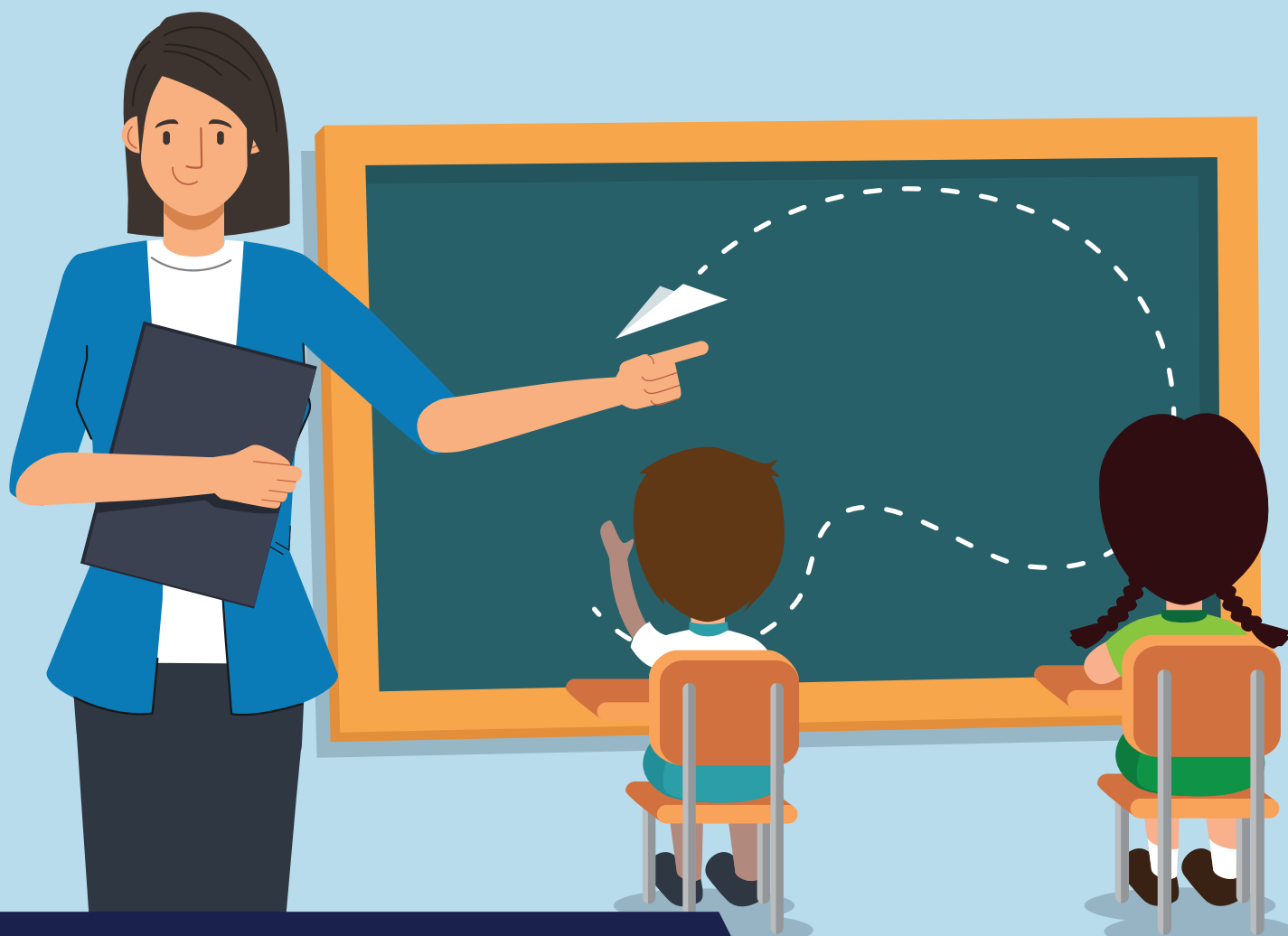
attend school/centre, including staff, parents and children.

- Parents/carers of children with complex medical needs (including but not limited to underlying respiratory and cardiovascular conditions), should seek advice from the child's medical/health practitioner to support informed risk assessment and decision-making about whether on-site education is suitable. This is in line with the SEND Code of Practice.

Confirmed or suspected outbreak connected to a school/ECCE centre/Nursery Class

Any educational facilities connected to a confirmed or probable case of COVID-19 must close as per the advice of the Public Health Department, to allow contact tracing and deep cleaning. The advice will include the length of closure.

COVID-19
gov.ky/coronavirus



Teaching and Learning



MINISTRY OF
EDUCATION, YOUTH, SPORTS,
AGRICULTURE & LANDS
CAYMAN ISLANDS GOVERNMENT

Teaching and Learning - School/ECCE Centres/ Nursery Class

Learning loss

- Schools and ECCE centres/Nursery Class should make arrangements to identify and remediate learning loss due to mandated closure (see MEYSAL document: 'Education Recovery Plan for Schools 2020').
- Recognition needs to be made that different children, teachers and classes are all impacted differently by school closure. Access to remote learning and the quality of provision will vary.
- Children from socio-economically challenged backgrounds are at greater risk of having their learning negatively affected during periods of mandatory closure.
- Evidence of the actions taken to provide distance learning and mitigate learning loss will be required from schools (See the MEYSAL documents: 'Continuity of Education Policy Guidance for Schools' and the 'Distance learning during mandatory closure of schools' policy), including actions taken to provide for hard to reach learners.



COVID-19
gov.ky/coronavirus



Appendix 1

Keeping Cayman Safe Suppression Levels

Level 5 | Maximum Suppression

Level 4 | High Suppression

Level 3 | Moderate Suppression

Level 2 | Minimal Suppression

Level 1 | All Clear



Appendix 2

Level 3: When Government makes the decision to reopen ECCE centres to offer care during Level 3: Moderate Suppression, the following must be adhered to:

Attendance

- Only children of families who are exempt from the shelter in place for the purpose of working outside the home should be serviced at early childhood centres
- These persons include essential workers and persons employed in sectors exempt according to the Level 3: Moderate Suppression regulations or guidelines
- Parents/carers of children with complex medical needs (including but not limited to underlying respiratory, cardiovascular conditions and high risk pregnancies), should seek advice from the child's medical/health practitioner to support informed risk assessment and decision-making about attending an ECCE centre. Centres may require evidence of this guidance prior to admitting students.
- Children who are sick or have any COVID-19 symptoms, are in isolation, have come into contact with a person confirmed or suspected to have COVID-19 or are awaiting the result of a test should not attend the early childhood centre

Staff

- Staff who are in the high-risk groups (e.g.

by age, medical history, existing medical condition such as diabetes) should not return to work during this phase

- Return to work for other staff members at this time should be mutually agreed between owner and employee
- Staff who are sick or have any COVID-19 symptoms, are in isolation, have come into contact with a person confirmed or suspected to have COVID-19 or are awaiting the result of a test should not return to work during this phase.
- All staff members must adhere to the 6 feet physical distancing guidelines with other adults. This includes coworkers and any other adult entering the centre. ECCE owners should develop protocols around this interaction and the use of common areas e.g. the staff room/lunchroom.

Space Ratio

- 30 sq. ft. of useable indoor space will be required as opposed to 20 sq. ft. of useable indoor space
- Outdoor space will remain at 40 sq. ft. per child as per the Education Regulations, 2017

Adult:child ratio

- Adult:child ratios as per the Education Regulations, 2017 should be adhered to
- Staff should be deployed appropriately to ensure adult: child ratios are adhered to as well as allowing children to remain in core groups throughout the time at the centre.

- A staff member should only care for the core group they are designated to (other than if a staff member has to intervene with a child outside their core group to keep that child from being harmed or causing harm)
- Centre owners should have a plan to ensure the children are cared for in the event of staff absence

Personal Protective Equipment (PPE) and Masks

- It is not a requirement to wear PPE and masks during the general activities of the day in the centre i.e. preparing and facilitating activities and interactions with children
- It is not recommended that children under 2 years old wear masks. At no time, unless individually required in writing by their medical practitioner, should children under 2 years old be made to wear a mask
- Appropriate PPE e.g. masks and gloves must be used when changing diapers, handling bodily fluids (e.g. vomit), and cleaning the facility. Guidance on what is appropriate may change according to research and findings from other countries, so it is recommended that owners stay updated with information from the Public Health Department. (Find current recommendations in the attached document - Interim COVID-19 Guidelines for Water, Sanitation, Hygiene, and Waste Management in Institutional Facilities, Communities and Home Settings from the Caribbean Public Health Agency)

- Advice on whether staff wear masks should be guided by the Public Health Department.

Talking About COVID-19

- Information about COVID-19 should be shared in an age appropriate manner with young children who ask for information
- Staff should be sensitive and allow children the opportunity to share their feelings regarding their experience during the COVID-19 shelter in place order. This could include giving children opportunities to express themselves through the arts
- Staff should not “overshare”, design lessons around COVID-19 or force children to discuss the topic. However, information on hygiene and respiratory protocols should be shared, implemented and monitored with children in age appropriate ways

Sanitization

- Guidance on what is appropriate may change, so it is recommended that owners and operators stay updated with information from the Public Health Department
- At this time, please find some sanitization protocols in the document attached - Interim COVID-19 Guidelines for Water, Sanitation, Hygiene, and Waste Management in Institutional Facilities, Communities and Home Settings from the Caribbean Public Health Agency
- Extreme care must be taken to ensure that sanitization procedures are adhered to

consistently

- All toys, equipment and resources used must be cleaned each day based on the sanitization requirements

Service Model

- Less children can be serviced in your centre due to the increase in the space ratio requirement
- Children should remain in consistent core groups, and should not mix with other core groups or share common areas unless thoroughly sanitised between groups
- Group gathering (e.g. whole centre assemblies, whole class circle time, whole centre meal times in a common area, PTAs, sport day, assemblies) are not to be held
- Food served on platters or shared bowls and shared serving utensils are not to be used
- Water play is not allowed
- Only toys, equipment and resources which can be cleaned regularly should be used at this time. *sensory bins (e.g. rice, pasta, sand, shredded paper, water, collections from nature, beans), stuffed toys or activities which cannot be cleaned between each child's use are not to be used
- There should be a plan for child-initiated play opportunities for children to explore and learn through purposeful play for at least 75% of the child's awake time spent at the centre (children should be able to spend a portion of this time engaged in learning activities in the outdoor environment)

- Adults should be especially vigilant when interacting with children with regards to detection of any type of trauma, including abuse and/or neglect, which that child may have experienced when isolated from society. Child safeguarding reporting protocols must be followed if there is a suspicion of abuse or neglect. Support for the child's mental health must be provided through referrals to relevant agencies and trauma sensitive practices throughout the centre. There may be a need for the training of staff in recognising the symptoms of trauma.

Illness control

- A system for recording persons who enter the premises throughout the day should be established. Information such as name, time of entry and exit, reason for visit and contact details should be collected. The need to collect this information should be clearly communicated to all stakeholders. This is to ensure information is retained in the event contact tracing will be necessary
- All maintenance and service to the facility must be completed when no children are in the centres. If emergency maintenance services are necessary, all service providers who enter the centre must adhere to strict hand hygiene protocols and social distancing requirements
- No person should enter the centre who has respiratory illness or symptoms of respiratory illness
- No person who has been knowingly exposed to a person with confirmed or

suspected COVID-19 should enter the centre

- No child who has an illness should enter the centre. There should be strict adherence to the Illness Policy which the centres establish
- Children who become ill during the course of the day should be isolated from other children in a designated area of the ECCE centre (sick bay) while receiving adult care until the child is collected. All parents must agree to immediate collection of their child should they become ill
- No child or staff member should return to the centre if there is a suspicion or confirmation of COVID-19 until given permission by their medical practitioner or the Public Health Department
- All instances of respiratory illness of staff or children at the centre must be reported to the Public Health Department
- Guidance from the Public Health Department regarding when a centre should close and the duration of closure in the event of suspected or confirmed COVID-19 of any person in the ECCE centre must be strictly adhered to
- ECCE centre must be used for the sole purpose of operations relating to the ECCE centre i.e. no person is to use the facilities of the ECCE centre outside of hours of operation. This includes the play equipment and outdoor area.

Appendix 3

The following sources are acknowledged in the production of this guidance:

- Caribbean Public Health Agency: Interim COVID-19 Guidelines for Water, Sanitation, Hygiene, and Waste Management in Institutional Facilities, Communities and Home Settings;
<https://www.carpha.org/Portals/0/Documents/Technical%20Guidance/COVID-19%20WASH%20Guideline.pdf>
- COVID-19 Technical briefing To Dutch Parliament; Role of children in the COVID-19 outbreak
https://assets.publishing.service.gov.uk/government/uploads/system/uploads/attachment_data/file/886997/s0291-dutch-parliament-role-of-children-in-transmission-220420-sage31.pdf
- Department for Education UK; Coronavirus (COVID-19): guidance for educational settings;
<https://www.gov.uk/government/publications/guidance-to-educational-settings-about-covid-19/guidance-to-educational-settings-about-covid-19>
- Government of New South Wales: A guide to NSW school students returning to face-to-face learning;
<https://education.nsw.gov.au/covid-19/advice-for-families>
- Government of Western Australia; COVID-19 coronavirus: Education and family advice;
<https://www.wa.gov.au/organisation/departments-of-the-premier-and-cabinet/covid-19-coronavirus-education-and-family-advice>
- Government of Western Australia; COVID-19 coronavirus: Education and family advice;

<https://www.wa.gov.au/organisation/departments-of-the-premier-and-cabinet/covid-19-coronavirus-education-and-family-advice>

- **Ministry of Education, New Zealand:**
Information and advice for students, whānau, and the education sector.
<https://www.education.govt.nz/covid-19/>

- **Ministry of Education Singapore:**
<https://www.moe.gov.sg/news/press-releases/schools-and-kindergartens-to-re-open-with-enhanced-precautionary-measures>

- **Ministry of Education Singapore:**
<https://www.moe.gov.sg/news/press-releases/schools-and-kindergartens-to-re-open-with-enhanced-precautionary-measures>

- **World Health Organization:**
Considerations for school-related public health measures in the context of COVID-19
<https://www.who.int/publications-detail/considerations-for-school-related-public-health-measures-in-the-context-of-covid-19>

- **UK Government: Scientific Advisory Group for Emergencies (SAGE): Coronavirus (COVID-19) response; Interdisciplinary Task and Finish Group on the Role in Children in Transmission: Modelling and behavioural science responses to scenarios for relaxing school closures**

https://assets.publishing.service.gov.uk/government/uploads/system/uploads/attachment_data/file/887014/s0300-tfc-modelling-behavioural-science-relaxing-school-closures-sage31.pdf

- **The Scottish Government. Coronavirus (COVID-19); Scientific evidence on schools and ELC settings**
<https://www.gov.scot/binaries/content/documents/gov-scot/publications/research-and-analysis/2020/05/coronavirus-covid-19-schools-early-learning-and-childcare-settings---scientific-evidence/documents/coronavirus-covid-19-scientific-evidence-on-schools-early-learning-and-childcare-settings-26-may-2020/coronavirus-covid-19-scientific-evidence-on-schools-early-learning-and-childcare-settings-26-may-2020/govscot%3Adocument/Scientific%2BEvidence%2BSchools%2Band%2BELC.pdf>

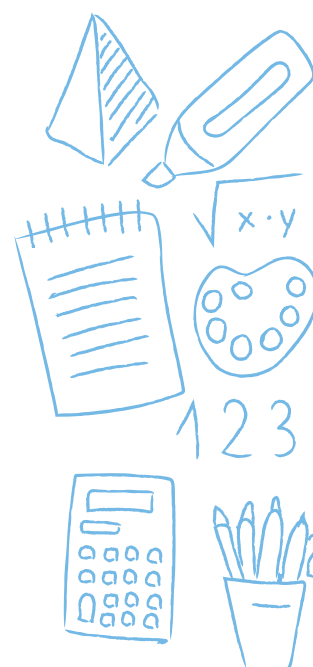
[ing-and-childcare-settings-26-may-2020/govscot%3Adocument/Scientific%2BEvidence%2BSchools%2Band%2BELC.pdf](https://www.govscot%3Adocument/Scientific%2BEvidence%2BSchools%2Band%2BELC.pdf)

- **The Telegraph;**
<https://www.telegraph.co.uk/education/2020/04/20/coronavirus-lockdowns-ease-countries-gradually-reopening-schools/>

- **TES: How Dutch schools reopened with no pupil distancing;**
<https://www.tes.com/news/coronavirus-how-dutch-schools-reopened-no-pupil-distancing>

- **TES: Reopening schools: how are other countries doing it?**
<https://www.tes.com/news/coronavirus-reopening-schools-how-does-it-work-around-world>

- **UNICEF: Framework for Reopening Schools;**
<https://www.unicef.org/documents/framework-reopening-schools>



COVID-19
gov.ky/coronavirus



Parents and guardians are encouraged to reach out to schools directly for any additional information. Contact info can be found at:

www.gov.ky/coronavirus-education