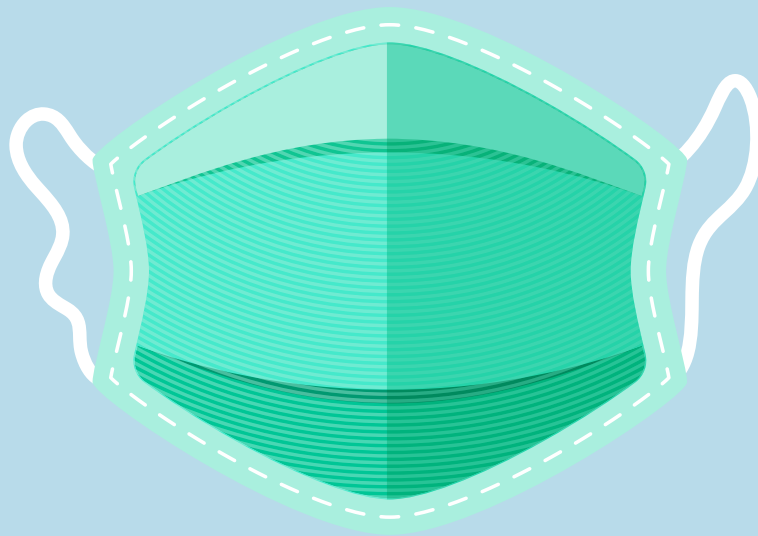


**COVID-19**  
gov.ky/coronavirus



## Mask Required



Face masks are to be worn at all times **when moving around the workplace** and when in communal spaces (e.g. hallways, lobbies, bathrooms, kitchens, elevators etc.)

### Exemptions:

- Sitting quietly at your desk provided 6 feet can be maintained between employees.
- While eating/drinking.