

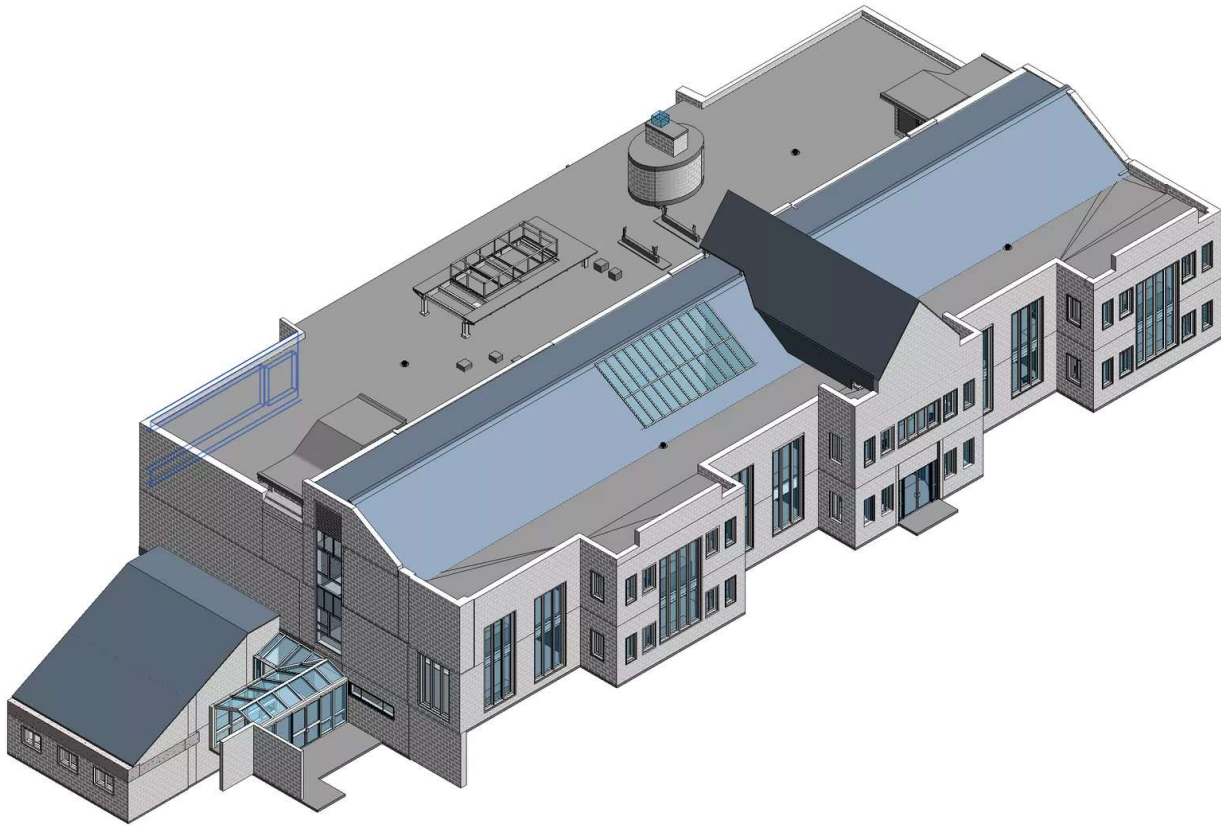


**EXISTING  
CONDITIONS**

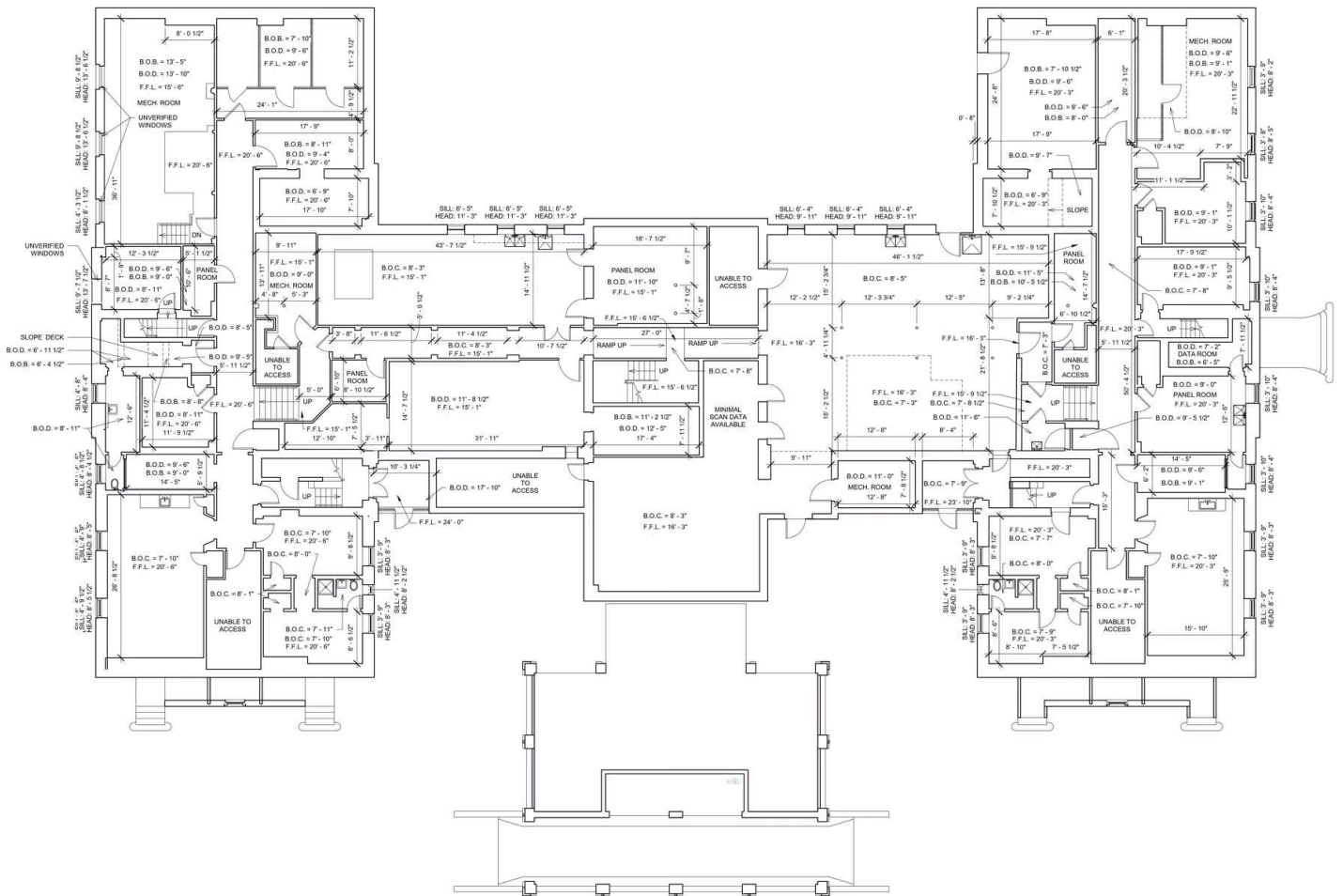
Primary Academic  
Building Portfolio Case  
Study's

# Case Study: Phillips Exeter Academy, Exeter NH

We provided our client with a full 3D laser scan and 3D Revit BIM model to facilitate an upcoming renovation



Exterior shell BIM model with floor plan drawings

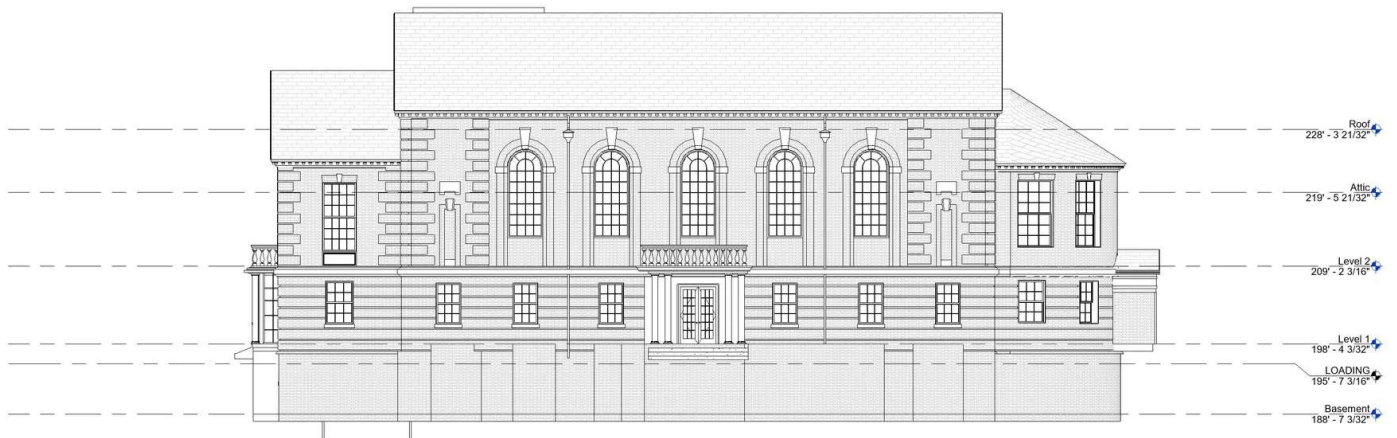


# Case Study: The Horace Mann School, Bronx, New York

We provided our client with a full 3D laser scan and 3D BIM model to aid in a full restoration of the exterior and interior



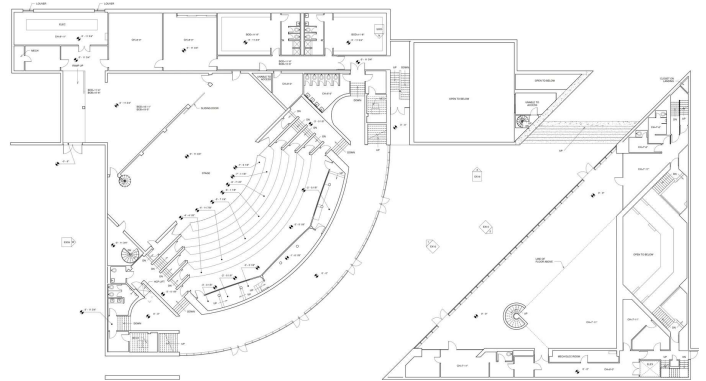
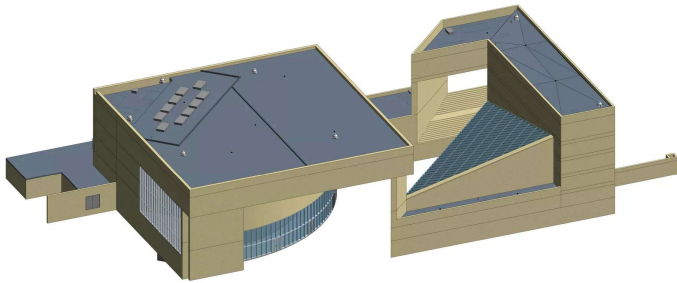
This one of a kind building captured in exquisite detail





# Case Study: Choate Rosemary Hall, Connecticut

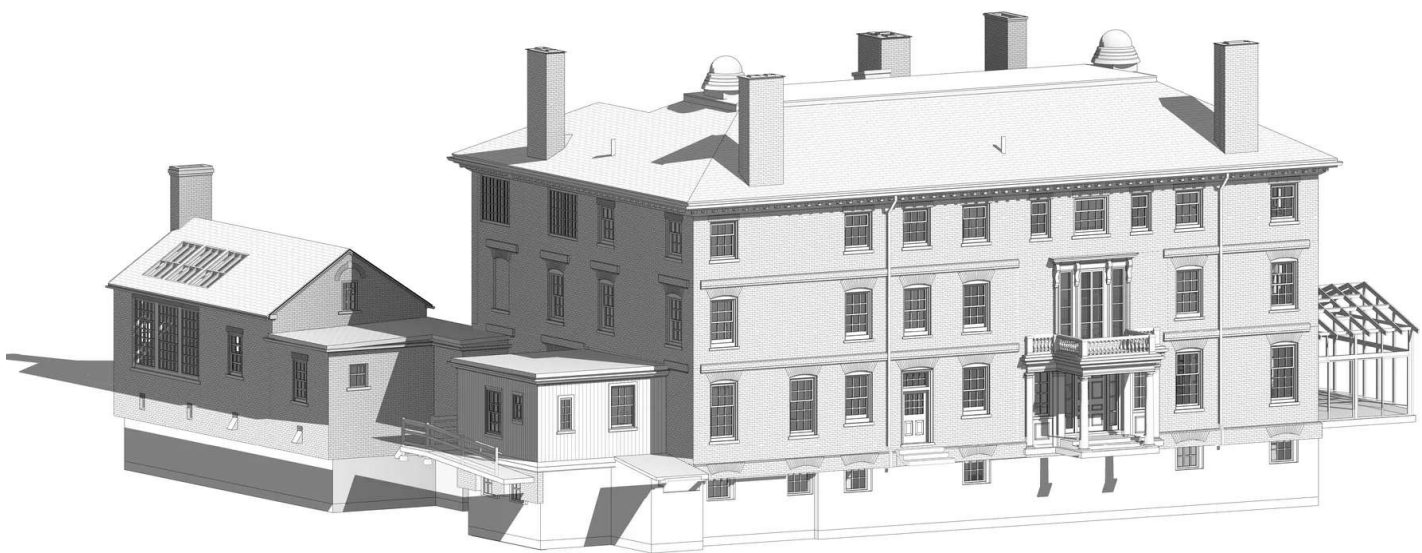
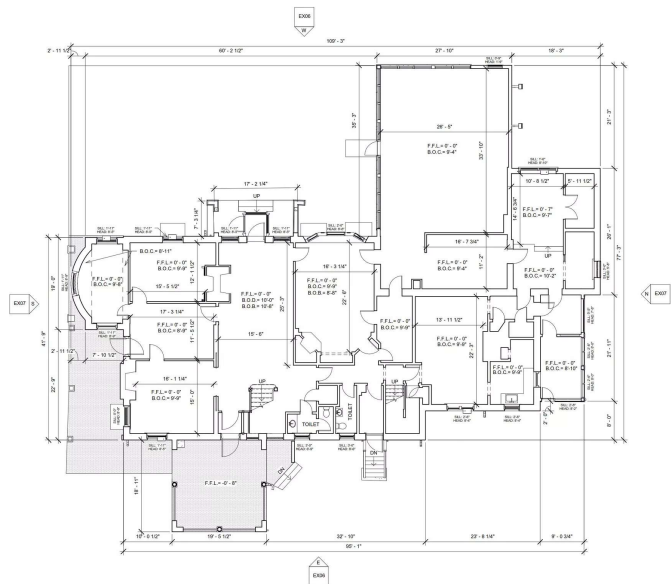
We created a highly detailed 3D scan and BIM model to facilitate a major restoration project



3D Laser Scan Data and 3D Revit Model, including exterior shell, floor plans, roof plans, reflected ceiling plans

# Case Study: Buckingham, Browne and Nichols School, Cambridge, Massachusetts

We created a highly detailed 3D scan and BIM model for a new building acquisition

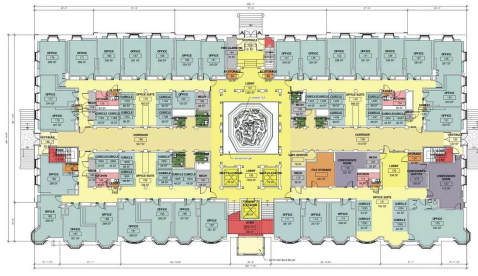


3D Laser Scan Data and 3D Revit Model of full interior and exterior shell



# Case Study: Morgan Hall

We created a highly detailed 3D scan and BIM model to facilitate a major preservation effort



Room Legend

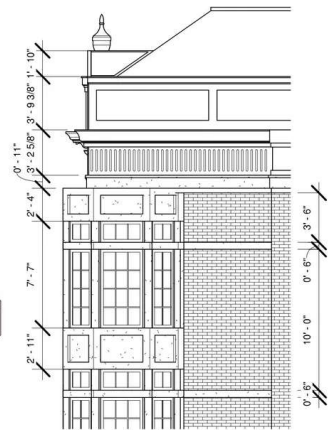
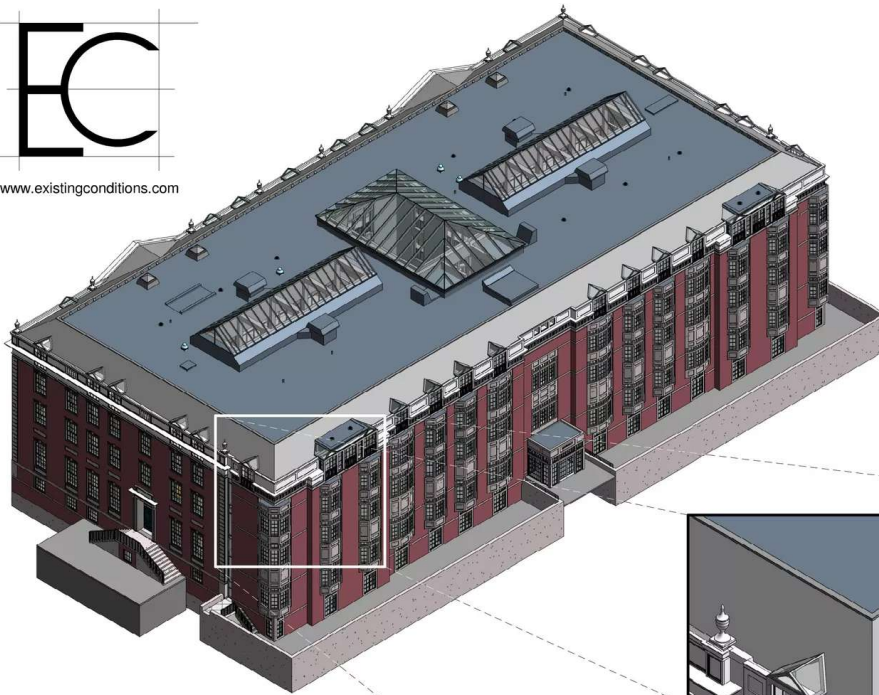
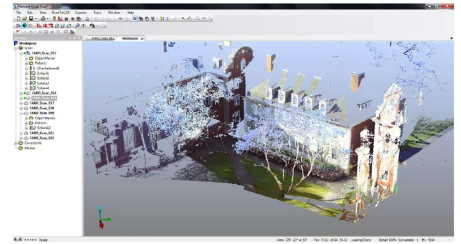
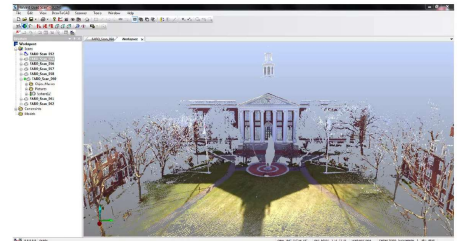
RECEPTION	OFFICE	OFFICE SUITE
CONFERENCE ROOM	OFFICE	OFFICE SUITE
CONFERENCE SERVICE	OFFICE	OFFICE SUITE
CLERK	OFFICE	OFFICE SUITE
CLERK	OFFICE	OFFICE SUITE

With Revit, Facility Managers will also have a powerful database that is directly tied into the model. Not only will this provide a database with accurate square foot calculations that will automatically update when changes are made to the floor plans, you will also be able to schedule anything that is in the model. From window and door schedules, material takeoffs, furniture schedules, electrical future reports, department areas, occupancy charts, mechanical system reports and more. We provide you with a powerful framework that can be expanded upon and updated to meet any future facility management need.

Room	Area	Volume	Perimeter
RECEPTION	192 SF	174 SF	34969 SF
CONFERENCE ROOM	174 SF	34969 SF	29320 SF
CONFERENCE SERVICE	34969 SF	29320 SF	93 SF
CLERK	29320 SF	93 SF	19675 SF
CLERK	93 SF	19675 SF	690 SF
CLERK	19675 SF	690 SF	124 SF
CLERK	690 SF	124 SF	369 SF
CLERK	124 SF	369 SF	11876 SF



By using sophisticated laser measurement and digital recording and data capture tools we have the advantage of greater speed and precision than traditional building survey methods. Our base laser tool is accurate to 2 mm over a 120 meter span which far exceeds most required tolerances. The images on the right are of the 3D color scan that we did at Harvard Business School using the Faro Focus 3D scanner. With a series of 15 minute scans, we are then able to extract any dimension that is within line of site of the scanner. This can also be used for campus wide surveys for any of a number of reasons.



Material: Name	Material: Area
Aluminum	192 SF
Cast Iron	174 SF
Concrete - Precast Concrete	34969 SF
Glass	29320 SF
Laminate - Ivory, Matte	93 SF
Masonry - Brick	19675 SF
Masonry - Brick No pattern	690 SF
Metal - Steel	124 SF
Porcelain - Ivory	369 SF
Roofing - Generic	11876 SF

Complete dimensionally accurate, presentation quality 3D model. Exterior material takeoffs at a click of the mouse.

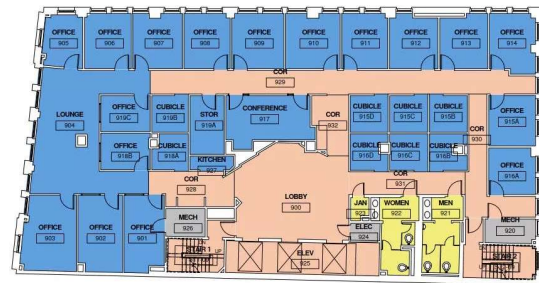


3D Laser Scan Data and 3D Revit Mode



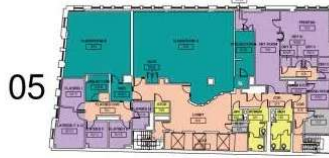
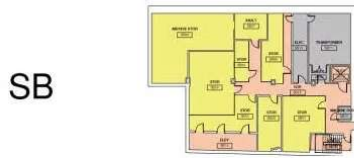
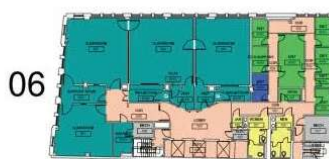
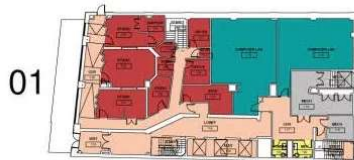
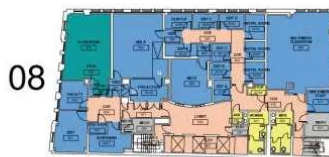
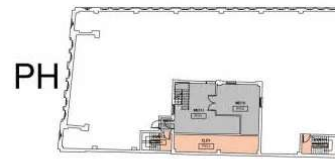
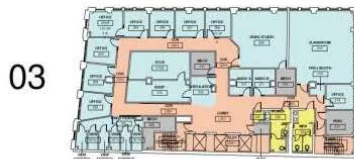
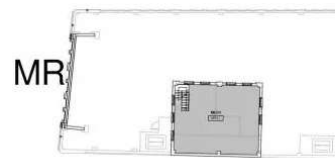
# Case Study: Facility Dept planning study

We created a highly detailed 3D scan and BIM model to facilitate ongoing facility management



Department Legend

- Circulation
- Common
- Mechanical
- Visual and Media Arts



Department Legend

- Academic Affairs
- Audio Dept
- Avid Suite
- BFA Suite
- Circulation
- Classroom / Lab
- Common
- Controller
- Editing
- Emerson Channel Office
- Finance
- Gen Counsel
- Information Technology
- Mechanical
- Media Services
- Office Grad Student
- President's Office
- V.P. Adm / Fin
- Visual and Media Arts
- WERS Station
- Writ, Lit, Pub

The Department Schedule is directly tied to the model, allowing for insights to always be in sync.



# Thank You

We consider all of our clients to be our collaborators. We appreciate the chance to show you some of the work we have done to help peer institutions. We look forward to speaking with you soon.

