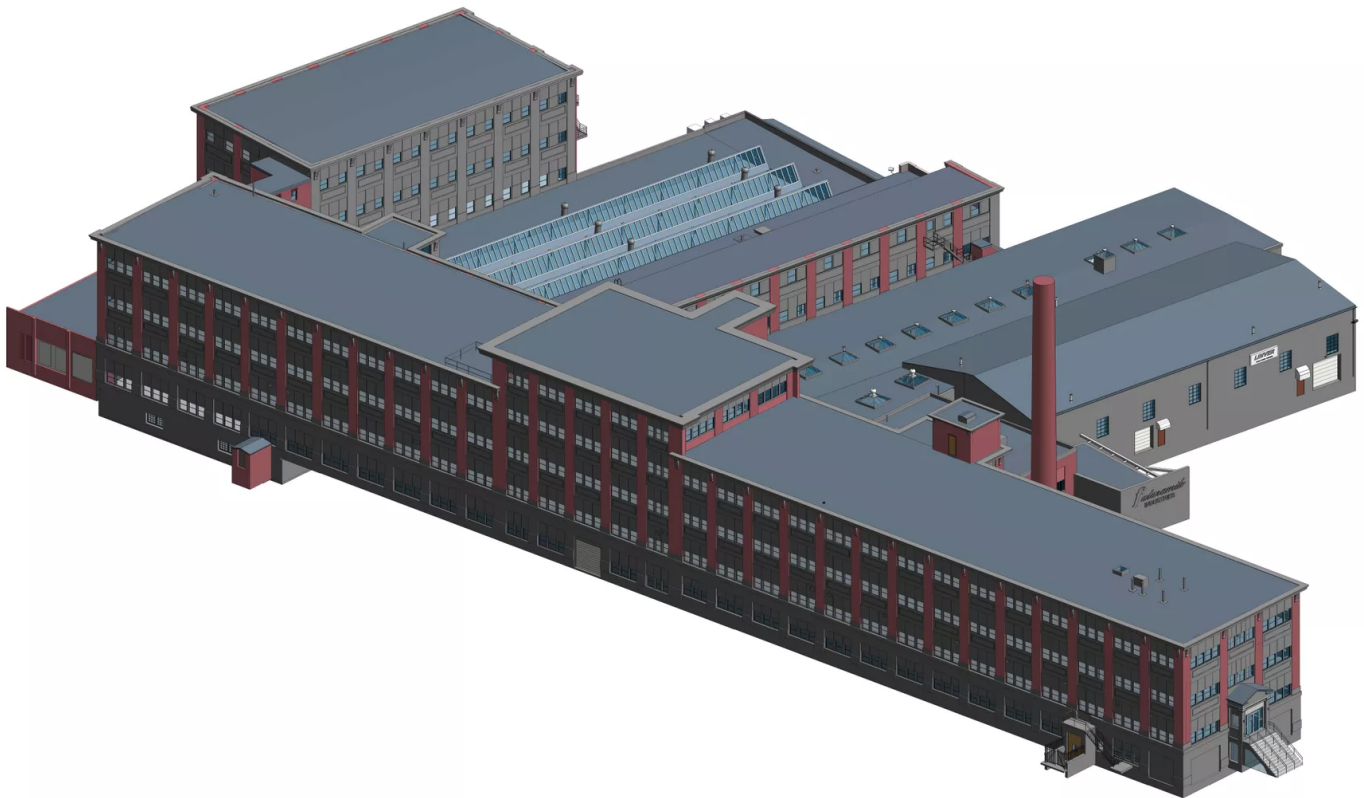


# Industrial Experience and Expertise

Our team has decades of experience when it comes to delivering accurate building documentation for industrial buildings. **We've had the privilege to work on some of the most valuable and high profile industrial projects in the United States**, and we know what's required to get the job done right. Below is a selection of relevant projects we have measured and modeled in recent years.

1. **The American Locomotive Works**, Providence, Rhode Island, measured over 900,000 sq. ft.
2. **The Eagle Mill**, Lee, Massachusetts, modeled over 400,000 sq. ft. of industrial space
3. **250 Canal Street**, Lawrence, Massachusetts. model of the entire 450,000 sq. ft. mill
4. **The Paragon Worsted Mill**, Providence, Rhode Island, measured over 300,000 sq. ft. of space
5. **26 Jackson Street**, Lowell, Massachusetts, modeled approximately 250,000 sq. ft.
6. **The LaGrange Mill Complex**, Worcester, Massachusetts, measured over 400,000 sq. ft.
7. **The Star Mill**, Middleborough, Massachusetts, modeled more than 350,000 sq. ft.
8. **The Winchester Gun Factory**, New Haven, Connecticut, approximately 850,000 sq. ft.
9. **The Locke Street Mill**, Haverhill, Massachusetts, measured roughly 275,000 sq. ft.



**3D BIM Documentation - 237 Hamilton, Hartford, Connecticut**