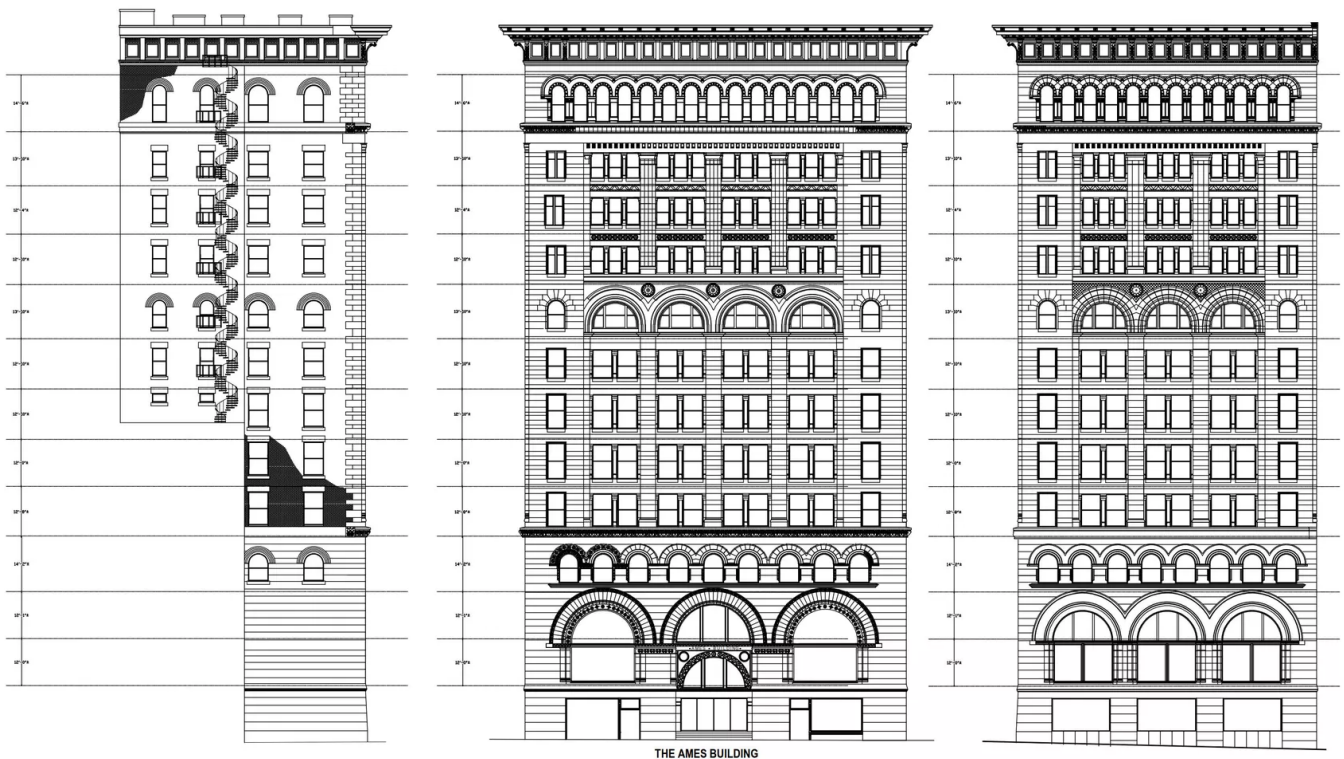


Hospitality Experience and Expertise

Our team has decades of experience when it comes to delivering accurate building documentation for hotel and hospitality buildings. **We've had the privilege to work on some of the most historic and high profile hospitality projects in the United States**, and we know what's required to get the job done right. Below is a selection of relevant projects we have measured and modeled in recent years.

1. **The Sheraton Hotel**, Boston, MA, more than 500,000 sq. ft.
2. **The Biltmore Hotel**, Providence, RI, model of approximately 250,000 sq. ft.
3. **The Weston Copley Plaza**, Boston, MA, measured over 200,000 sq. ft.
4. **The Tudor Hotel**, New York, NY, approximately 200,000 sq. ft. of space
5. **The Radisson Hotel**, Biscayne Blvd, Miami, FL, modeled roughly 450,000 sq. ft.
6. **The Plaza Hotel**, New York, New York, measured over 275,000 sq. ft.
7. **The Fairmont Copley Plaza Hotel**, Boston, MA, roughly 300,000 sq. ft.
8. **The Ocean House**, Watch Hill, Rhode Island, approximately 150,000 sq. ft.
9. **L'Enfant Plaza**, Washington, D.C. measured over 1,200,000 sq. ft. of space
10. **The Hotel Liaison**, Washington, D.C., model of the complete hotel property



Facade Documentation of The Ames Hotel - Boston, Massachusetts