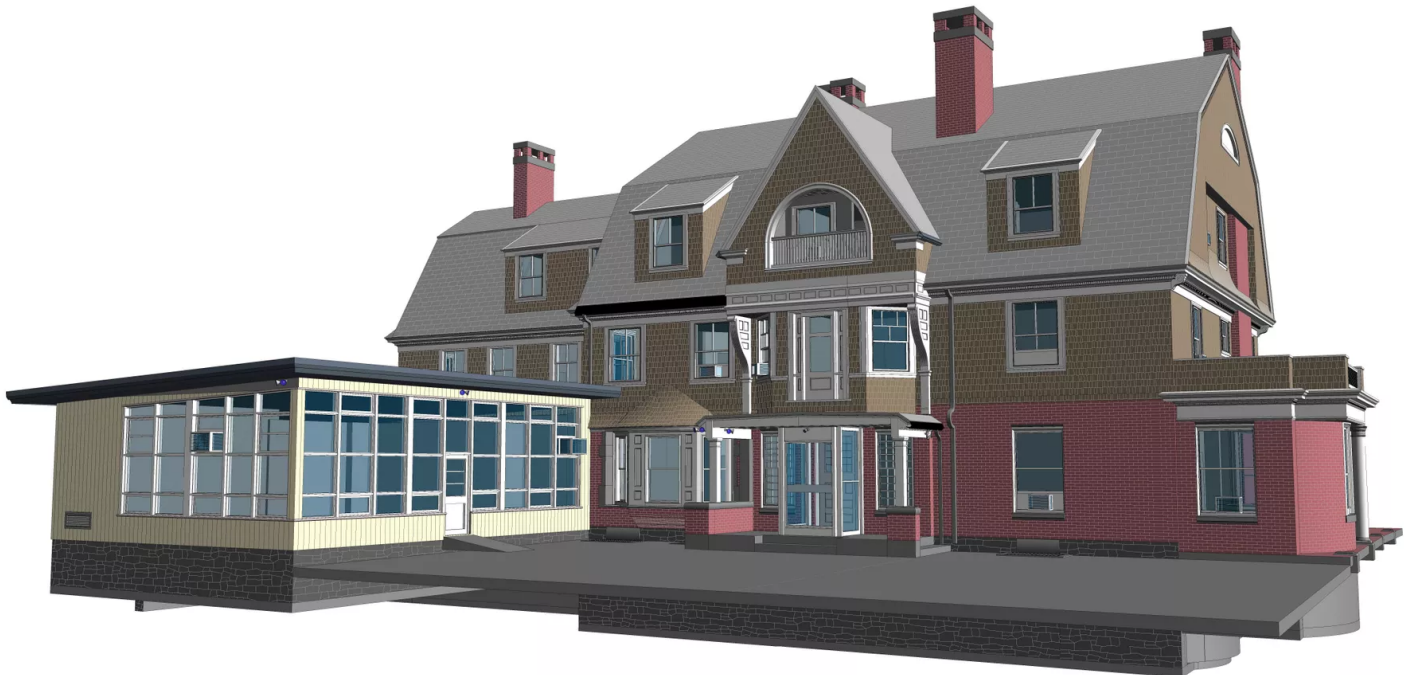


Fine Homes Experience and Expertise

Our team has decades of experience when it comes to delivering accurate building documentation for fine homes. **We've had the privilege to work on some of the most historic and high profile homes in the United States**, and we know what's required to get the job done right. Below is a selection of relevant projects we have measured and modeled in recent years.

1. **Hopedene Mansion**, Newport, RI, measured over 30,000 sq. ft.
2. **2101 Commonwealth Ave**, Boston, MA, model of the full property, more than 25,000 sq. ft.
3. **181 Ocean Ave**, Newport, RI, measured over 10,000 sq. ft.
4. **19 Smith's Point**, Manchester, MA, more than 15,000 sq. ft. of space
5. **Belcourt Castle**, Newport, RI, an assemblage of spaces totaling more than 30,000 sq. ft.
6. **441 Hale St**, Manchester, MA, approximately 25,000 sq. ft.
7. **Case House**, Weston, MA, roughly 5,000 sq. ft.
8. **Rough Point Mansion**, Newport, RI, measured over 6,000 sq. ft.
9. **66 East 11th Street Penthouse**, New York, NY, model of the full property



3D BIM Documentation - Case House, Weston, MA