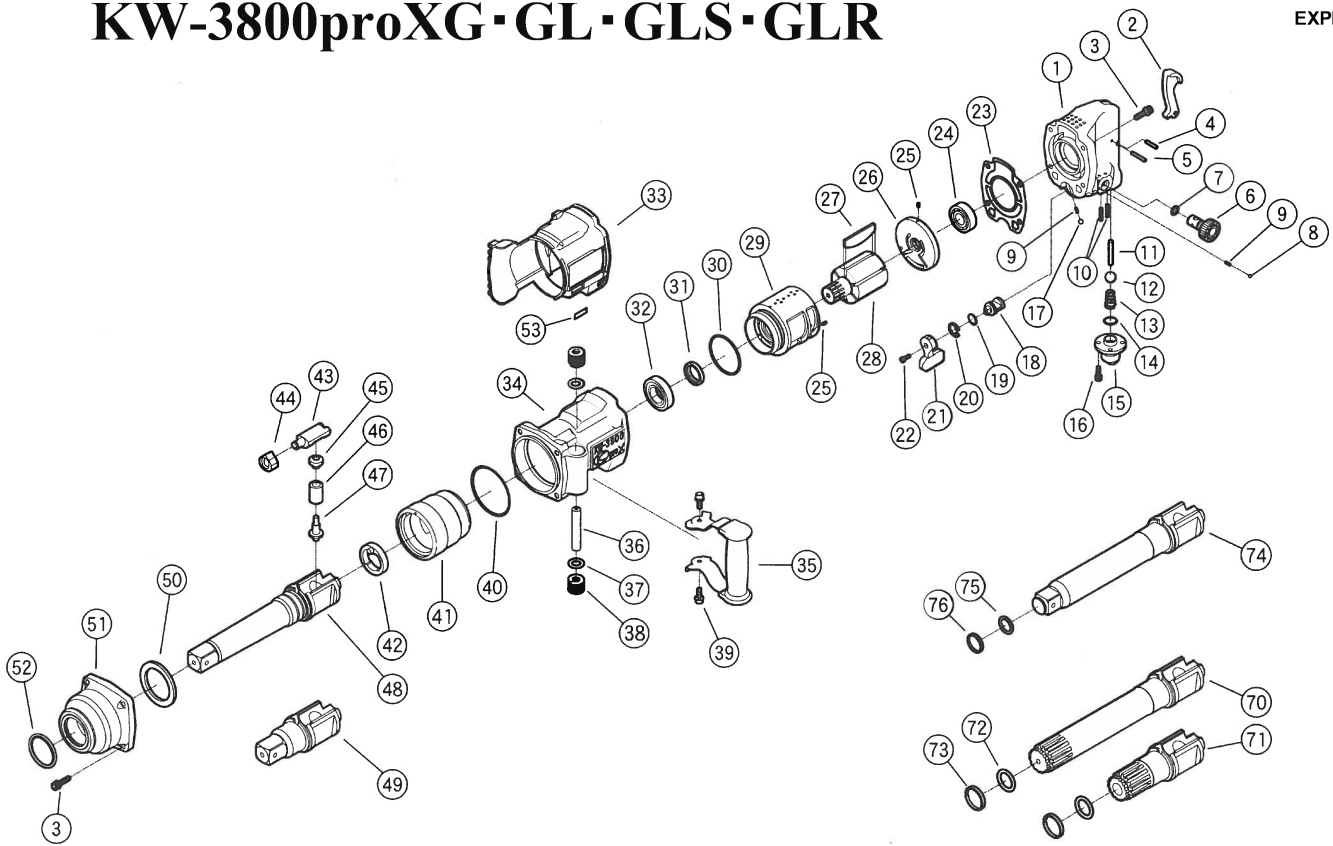


# KW-3800proXG·GL·GLS·GLR

EXPLODED VIEW



REF.NO.	PART NO.	PART NAME	Q'TY	REF.NO.	PART NO.	PART NAME	Q'TY
1+○	05381800C	HANDLE C.P.(OUTSIDE TRIGGER)	1	35	□ 05381450C	D-HANDLE C.P.	1
2	○ 0222117	THROTTLE LEVER	1	36	□ 05381459C	SHAFT	1
3	Z0666X22A	BOLT	8	37	□ Z13991	SHIM RING	2
4	○ Z0614X20	PIN	1	38	□ Z13994	SPRING	2
5	○ Z0614X24	PIN	1	39	□ Z0666X16	BOLT	2
6	○ 0538117B	REGULATING VALVE	1	40	Z041S75	O-RING	1
7	○ Z040P10A	O-RING	1	41	0538026B	HAMMER WHEEL	1
8	○ Z0104D	STEEL BALL	1	42	0538050B	RETAINER	1
9	○ 0114193	KNOCK SPRING	2	43	05380280C	ANVIL PIECE	1
10	○ Z0564X18	PIN	2	44	0538027A	CAM	1
11	○ 0538113B	THROTTLE VALVE PIN	1	45	0538052B	PLUNGER B	1
12	○ Z0119/16D	THROTTLE VALVE	1	46	0538053C1	SPRING	1
13	○ 0222190	THROTTLE SPRING	1	47	0538051B	PLUNGER A	1
14	○ Z041S18	O-RING	1	48	05381300C	ANVIL GL	1
15	○ 0538111B	INLET BUSHING	1	49	0538030A	SQ.DR.ANVIL (G)	1
16	○ Z0665X16A	BOLT	4	50	0538029	BUSHING	1
17	○ Z0106D	STEEL BALL	1	51+●	05381820C	IMPACT HOUSING C.P.	1
18	○ 0538115B	REVERSE VALVE	1	52	● Z040P42	O-RING	1
19	○ Z041S16	O-RING	1	53	05160950E	NUMBER PLATE	1
20	○ Z03119	RETAINER-RING	1	70+×	05382841B	ANVIL GLS C.P.	1
21	○ 05381160C	REVERSE LEVER	1	71+×	05383841A	ANVIL GS C.P.	1
22	○ Z0664X10LH	SCREW	1	72	× Z040P26	O-RING	1
23	05381060C	MOTOR HOUSING GASKET	1	73	× 0132202	RETAINER RING	1
24	Z0016203	BALL BERING	1	74+△	05381844	ANVIL GL W/RETAINER RING	1
25	Z0563X6	PIN	2	75	Z04318030	O-RING	1
26	05381240C	REAR END PLATE	1	76	0538034A	RETAINER RING	1
27	0538022	ROTOR BLADE	6	77	05380844	ANVIL G W/RETAINER RING	1
28	05381210C	ROTOR	1				
29	05381200C	CYLINDER	1				
30	Z041S56	O-RING	1				
31	Z01825334	OIL SEAL	1				
32	Z0016205ZZ	BALL BERING	1				
33	05381041C	PROTECTOR	1				
□	05381810C	MOTOR CASE C.P. (W/D-HANDLE)	1				
34	□ 05381811C	MOTOR CASE UNIT	1				



**KUKEN CO., LTD.**

3-6-15 Nonoue, Habikino-shi, Osaka 583-0871, Japan

Tel : +81-72-953-3346 Fax : +81-72-953-0605

KUKEN

2018/11/06