

Exploded View/Parts List

MYG-70 Exploded View/Parts List

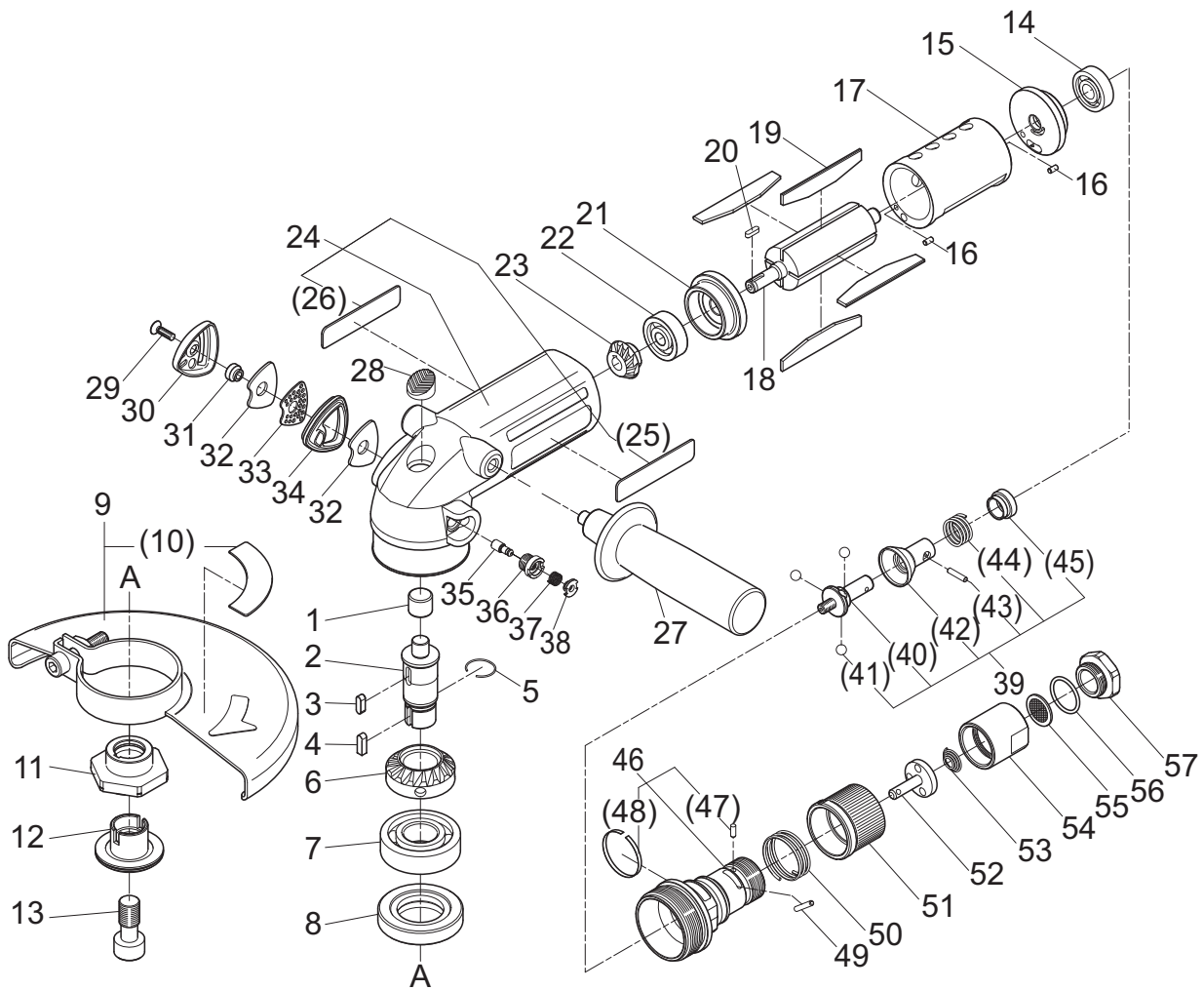
⚠ CAUTION

● **Users should never perform disassembly of the tool.**

This illustration is for reference only.

For repair or replacement of the tool, request service from the retailer where you purchased the tool or the nearest NITTO service member store.

Exploded view/parts list are subject to change at any time without notice. (As of Sep. 2017)



*1 indicates a consumable item, *2 indicates a commercial item. Parts inside () are components of the above assembly.

No.	Part no.	Part name	Quantity
*1 *2	1	TQ12088 Needle Bearing BK1012	1
	2	TQ15021 Spindle	1
	3	TP09933 Parallel Key 4×4×12 Both Ends Round	1
	4	TQ14906 Parallel Key 4×4×13.3 One End Round	1
	5	TQ15022 Stop Ring I-0.9×18.5×8.6	1
*1	6	TQ12547 Gear	1
*1 *2	7	TP04138 Ball Bearing 6204ZZ	1
	8	TB08263 Bearing Set Screw Ass'y	1 set
	11	TQ15023 Driving Flange	1
	12	TQ15258 Outer Flange 7/8	1
	13	TP11688 Outer Flange Bolt 12×25	1

Exploded view/parts list are subject to change at any time without notice. (As of Sep. 2017)

No.	Part no.	Part name	Quantity	
*1 *2	14	TP06242	Ball Bearing 629ZZ	1
	15	TQ12063	End Plate A	1
	16	TP04061	Spring Pin 3×6 AW	2
	17	TQ12062	Cylinder	1
	18	TQ14928	Rotor	1
*1	19	TB08555	Blade Ass'y (4 pcs.)	1 set
	20	TP10130	Parallel Key Both Ends Round 3×3×10	1
	21	TQ12064	End Plate B	1
*1 *2	22	TQ12087	Ball Bearing 638ZZ	1
*1	23	TQ12070	Pinion	1
	24	TB10370	Housing Sub Ass'y	1 set
	(25)	(TQ14942)	Label Model	1
	(26)	(TQ15255)	Label Warning	1
	28	TQ14980	Plug 70	1
	29	TQ14946	+ Countersunk Head Screw 4×14	1
	30	TQ15090	Exhaust Cover 70	1
	31	TQ15140	Spacer	1
*1	32	TQ15143	Exhaust Filter 70	2
	33	TQ15142	Exhaust Plate 70	1
	34	TQ15141	Packing Cover 70	1
	35	TQ14863	Lock Pin	1
	36	TQ14865	Pin Guide	1
	37	TQ14864	Spring 0.6×6.9×8	1
	38	TQ14866	Lock Button	1
	39	TB10092	Governor Ass'y	1 set
	(40)	(TQ12813)	Base	1
	(41)	(TP01566)	Steel Ball Ø6	3
	(42)	(TQ12067)	Sleeve	1
	(43)	(TQ12090)	Needle Roller 2.5×13.8	1
	(44)	(TQ12069)	Spring 1.4×15.5×14.2	1
	(45)	(TQ12068)	Stopper	1
	46	TB08254	Valve Holder Sub Ass'y A	1 set
	(47)	(TQ15156)	Dowel Pin A Type 3×8	1
	(48)	(TQ13076)	Label Off	1
	49	TQ12495	Valve Pin 3×17.5	1
	50	TQ12085	Spring 1.6×28×16	1
	51	TQ14932	Valve Ring	1
	52	TB08255	Feed Valve Ass'y	1 set
	53	TQ12086	Conical Spring 1×6.2×21.5×8	1
	54	TQ12492	Connection A	1
	55	TP01658	Filter	1
	56	CP25821	O-Ring JASO-1020	1
	57	TQ12493	Connection B	1

Accessories

No.	Part no.	Part name	Quantity
9	TB10371	Wheel Guard Ass'y	1 set
(10)	(TQ15256)	Label Warning Wheel Guard	1
27	TB08265	Handle Ass'y	1 set
	TQ02350	Bushing R 3/8 × NPT 3/8	1
	TP00170	6 mm Hex. Socket Screw Key	1
	TP11723	10 mm Hex. Socket Screw Key	1
	TQ15259	Instruction Manual	1