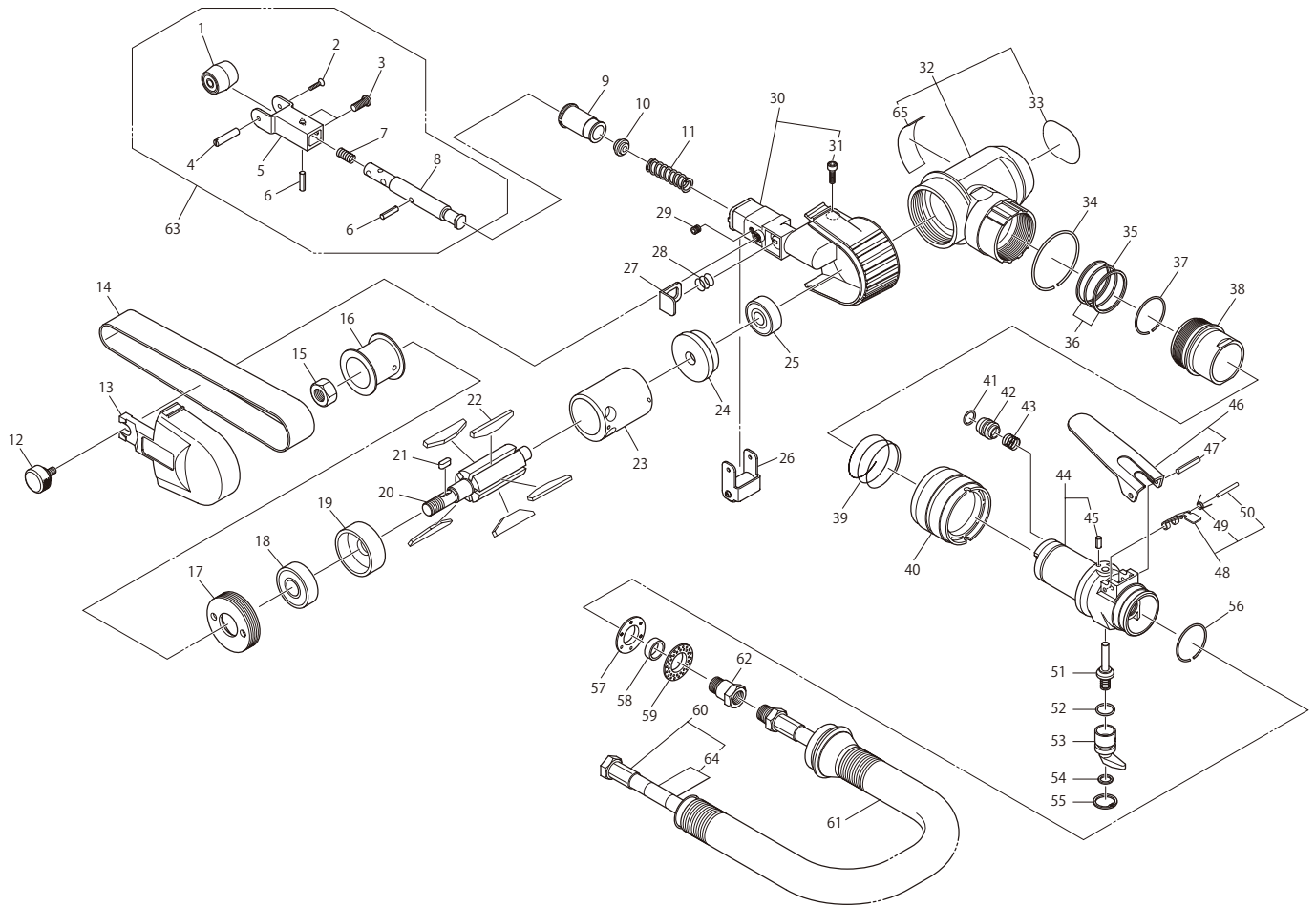


## EXPLODED DIAGRAM: BB-20

### **Warning**

This diagram is for your reference only. Do not attempt to service or repair the Tool.  
Do not take the Tool apart. Contact an authorized Nitto dealer for all service and repair of the Tool.  
Improper service and repair can cause accidents and severe injuries.  
Never attempt to modify the Tool.  
Never attempt service or repair the Tool yourself.

Exploded view/parts list are subject to change at any time without notice. (As of Mar. 2014)



Exploded view/parts list are subject to change at any time without notice. (As of Mar. 2014)

The parts numbers with ( ) are included in the Ass'y parts written above them.

No.	Parts No.	Description	Qty	Price
63	TB07105	Tension Bar Ass'y	1set	
1	(TB07106)	Idle Pulley 20 Ass'y	1set	
2	(TP14455)	Countersunk Head Screw 2x5	1	
3	(TQ07041)	Hex. Socket Button Head Screw 4x10	2	
4	(TQ10502)	Idle Pulley Shaft	1	
5	(TQ10504)	Tension Bar Bracket	1	
6	(TQ07228)	Spring Pin 3x12	2	
7	(TQ10526)	Tension Bar Spring	1	
8	(TQ10503)	Tension Bar Shaft	1	
9	TQ07201	Guard Insert	1	
10	TQ10586	Stopper	1	
11	TQ10513	Spring 1.2x8.8x37	1	
12	TQ07220	Cover Screw	1	
13	TQ10514	Cover	1	
14		Abrasive Belt Z76xN #60 20x330	1	
15	TQ10585	Hex. Nut M8 U-Nut	1	
16	TQ10521	Drive Pulley	1	
17	TQ10520	Lock Screw	1	
18	TP01913	Ball Bearing 6000ZZ	1	
19	TQ10496	End Plate B	1	
20	TQ10493	Rotor	1	
21	TP10107	Parallel Key Both Ends Round 3x3x6	1	
22	TB05218	Blade Ass'y (5 pcs/set)	1set	
23	TB07099	Cylinder Ass'y	1set	
24	TQ10495	End Plate A	1	
25	TP00468	Ball Bearing 608ZZ	1	
26	TB07109	Offset Bracket Ass'y	1set	
27	TQ10587	Push Button	1	
28	TQ07218	Spring 0.35x7.5x7	1	
29	TP15643	Hex. Socket Head Setscrew 4x4	1	
30	TB07138	Guard A Ass'y	1set	
31	(TP09693)	Hex. Socket Head Cap Screw 4x14	1	
32	TB08791	Housing Sub Ass'y	1set	
33	(TQ12880)	Label Warning	1	
65	(TQ12676)	Label Warning CE Mark	1	
34	TQ10602	Stop Ring O-32.2x1.4	1	
35	TP15487	O-ring JASO-1023	1	
36	TQ10525	Washer 24.7x27.7x0.8	2	

No.	Parts No.	Description	Qty	Price
37	TQ10519	Stop Ring O-22.2x1	1	
38	TQ10516	Lock Ring	1	
39	TQ10528	Lock Ring Spring	1	
40	TQ10527	Lock Sleeve	1	
41	CP26930	O-ring S-7	1	
42	TQ10517	Air Supply Valve	1	
43	TQ10518	Spring 0.8x8.5x5	1	
44	TB07103	Valve Sub Ass'y A	1	
45	(TP04061)	Spring Pin 3x6	1	
46	TB07136	Throttle Lever Ass'y	1set	
47	(TP13893)	Spring Pin 3x22	1	
48	TB07137	Lock Lever Ass'y	1set	
49	(TQ10255)	Lock Lever Spring	1	
50	(TP02718)	Spring Pin 2.5x16	1	
51	TA93070	Valve Stem Ass'y	1set	
52	CP20521	O-ring P-8	1	
53	TQ10511	Adjusting Valve	1	
54	TQ10530	Washer 8.5x11.8x1	1	
55	TQ04795	Internal Retaining Ring IRTW-12	1	
56	TQ10531	Stop Ring O-27x1.4	1	
57	TQ10603	Silencer	1	
58	TQ10604	Silencer Collar	1	
59	TQ10522	Silencer Plate	1	
60	TB08298	Air Hose L Ass'y	1set	
64	(TQ11519)	Label Lubrication	1	
62	(TQ11664)	Hose Nipple M10x1	1	
61	TQ10524	Exhaust Hose	1	

Accessories

No.	Parts No.	Description	Qty	Price
		Abrasive Belt Z76xN #120 20x330	1	
		Abrasive Belt Z76xN #240 20x330	1	
	TP04305	Hex. Socket Screw Key 2.5	1	
	TP04696	Hex. Socket Screw Key 3	1	
	TQ10532	Shoe	1	
	TQ10588	Dust Cover	1	
	TP02236	Bushing R 1/4 x NPT 1/4	1	
	TQ12877	Instruction Manual	1	
	TQ12881	Declaration of Conformity	1	