



# ACME

DIVISION

**AG & CONSTRUCTION  
MAINTENANCE EQUIPMENT  
FOR FIELD OR SHOP USE**

**2020 CATALOG**



A  
**HALTEC**  
CORPORATION  
COMPANY

**833-323-ACME(2263)  
www.ameintl.net**

**2347 Circuit Way  
Brooksville, FL 34604**





The ACME Division of AME International was founded to be a unique supplier to the Ag and Construction equipment industry. We wanted to provide more than just great products from a catalog so we created a division dedicated to working with mechanics, technicians, manufacturers, safety teams and maintenance departments. The ACME division brings our products to you so your team can experience the difference.

We are dedicated to helping our customers through our years of experience in working with agriculture, construction and mining equipment based on our countless days in the field using the products ourselves. On site demo days with one of our ACME trailers is a great way for your team to experience how our tools can work in your shop and answer technical questions. See the ACME difference and bring us in for a demo day to see how our products will make your shop safer and more efficient.



## Our Brands



AC Hydraulic<sup>+</sup>  
NO COMPROMISE





<b><u>Wheel Chocks</u></b>	<b>4</b>
<b><u>Cribbing</u></b>	<b>6</b>
<b><u>Safety</u></b>	<b>13</b>
<b><u>Hydraulic Jacks</u></b>	<b>15</b>
<b><u>Jack Stands</u></b>	<b>24</b>
<b><u>Tracked Equipment Shop Accesories</u></b>	<b>28</b>
<b><u>Field / Shop Maintenance</u></b>	<b>30</b>
<b><u>Battery Torque Tools</u></b>	<b>36</b>
<b><u>Tire / Wheel Handling</u></b>	<b>40</b>
<b><u>Tire Inflation</u></b>	<b>44</b>



## AME POLYURETHANE WHEEL CHOCKS



**RIGOROUSLY  
FIELD TESTED**

**OSHA 1910.111(f)(9)**

*Chock blocks. At least two chock blocks shall be provided. These blocks shall be placed to prevent rolling of the vehicle whenever it is parked during loading and unloading operations.*

We offer wheel chocks for virtually every application - from over the highway trucks to off-the-road equipment.

- Solid light weight construction, high impact polyurethane material
- Non-conductive, no threat to puncture the tire
- Durable, light weight, and easy to use - extensively field tested
- Impervious to chemicals, salts, rot and resistant to fuel, oils & solvents



SCAN TO VIEW A  
**VIDEO  
DEMO**



#15337



#15338



#15339



#15342



Model	Tire Size	Material	Length	Width	Height	Weight
15337	15.25 in to 86.75 in (120 mm to 2200 mm)	Polyurethane	18 in (475 mm)	12 in (305 mm)	9 in (225 mm)	13 lbs (6 kg)
15338	71 in to 118 in (1800 mm to 3000 mm)	Polyurethane	22.5 in (570 mm)	13 in (340 mm)	11 in (280 mm)	19.8 lbs (9 kg)
15342	86.75 in to 137.75 in (2200 mm to 3500 mm)	Polyurethane	24 in (621 mm)	13.5 in (343 mm)	12 in (323 mm)	24.3 lbs (11 kg)
15339	110.25 in to 177 in (2800 mm to 4500 mm)	Polyurethane	26.7 in (680 mm)	13.3 in (337 mm)	14 in (355 mm)	30.86 lbs (14 kg)



URETHANE

#15336



URETHANE

#15353

**MULTIPURPOSE  
DOUBLE-SIDED  
CHOCK**



#15341



**#15370 WHEEL CHOCK SIGN**  
(SOLD INDIVIDUALLY)

Model	Tire Size	Material	Length	Width	Height	Weight
15336	35.5 in to 55 in (900 mm to 1400 mm)	Urethane	13.3 in (340 mm)	8.6 in (220 mm)	7.8 in (200 mm)	7.7 lbs (3.5 kg)
15353	15.25 in to 71 in (1200 mm to 1800 mm)	Urethane	13.38 in (340 mm)	9.84 in (250 mm)	8.86 in (225 mm)	13.66 lbs (6.2 kg)
15341	31.5 in to 110.25 in (800 mm to 2800 mm)	Polyurethane	22 in (560 mm)	13 in (330 mm)	11 in (280 mm)	17 lbs (8 kg)



## WHEEL CHOCKS FOR HEAVY DUTY, TRUCK & BUS

FOR TIRES RANGING FROM 18" - 35" DIAMETER



Model	Tire Size	Material	Length	Width	Height	Weight
15309	18 in to 27 in (1200 mm to 2200 mm)	Urethane, orange	8.5 in (215 mm)	4.5 in (114 mm)	5.75 in (146 mm)	1.82 lbs (0.83 kg)
15325	24 in to 32 in (600 mm to 810 mm)	Urethane, orange	14 in (360 mm)	8 in (200 mm)	8 in (200 mm)	5.5 lbs (2.5 kg)
15367	27 in to 35 in (6850 mm to 8890 mm)	Urethane, orange	11.5 in (290 mm)	8 in (200 mm)	8 in (200 mm)	3.63 lbs (1.65 kg)

## RIBBED PYRAMID CHOCKS

WITH EYEBOLTS, FOR LIGHT & HEAVY DUTY USE

SUITABLE FOR APPLICATION IN PAIRS



## EYEBOLTS IDEAL FOR LANYARDS\*

\* LANYARD NOT INCLUDED



Model	Tire Size	Material	Length	Width	Height	Weight
15300	27 in to 32 in (685 mm to 812 mm)	Rubber, black	10 in (254 mm)	8 in (203 mm)	6 in (152 mm)	8.5 lbs (3.9 kg)
15324	27 in to 32 in (685 mm to 812 mm)	Rubber, orange	10 in (254 mm)	8 in (203 mm)	6 in (152 mm)	2.8 lbs (1.3 kg)
15366	27 in to 32 in (685 mm to 812 mm)	Urethane, orange	10 in (254 mm)	8.5 in (216 mm)	5.5 in (140 mm)	5.95 lbs (2.69 kg)

## HEAVY DUTY & SMALL OTR WHEEL CHOCKS

FOR TIRES RANGING FROM 47" - 95" DIAMETER



Model	Tire Size	Material	Length	Width	Height	Weight
15301	47 in to 86 in (1200 mm to 2200 mm)	Rubber, black	11 in (290 mm)	11 in (290 mm)	10 in (250 mm)	22 lbs (10 kg)
15355	65 in to 95 in (1650 mm to 2410 mm)	Urethane, orange	17 in (430 mm)	14.5 in (368 mm)	14.5 in (368 mm)	14 lbs (6.5 kg)



## STACKER CRIBBING BLOCKS



- 100% recycled plastic
- Unmatched strength – stronger than wood
- Resistant to gas, oil, and chemicals
- Certified tested
- 50 year warranty against splitting, rot, fluid absorption, termites, or mold caused by the environment
- Made in the USA



**Individually  
weight-rated  
and tagged**



Model	15210	15230	15239
Dimensions	4" x 4" x 18"	6" x 7" x 24"	6" x 7" x 24"
Lanyard	Yellow	Blue	Orange
Weight	7 lbs (3.2 kg)	25.2 lbs (11.4 kg)	27.3 lbs (12.4 kg)

Working  
Load Limit  
Pounds Per  
Square Inch  
AME  
Part Number

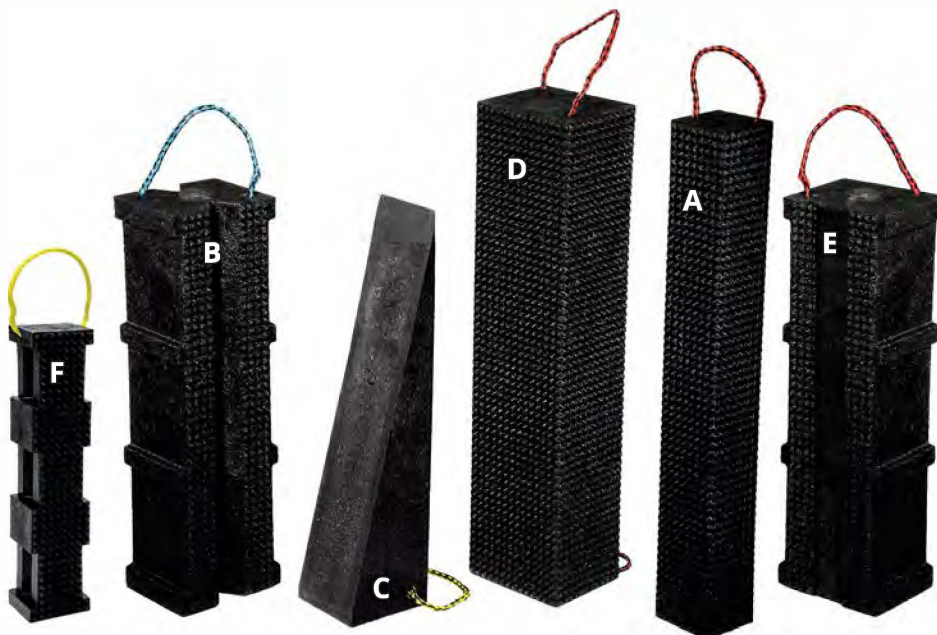
WLL: 129,632 lbs (58,000 kg) @25°C  
PSI: 865  
PART NO: 15239



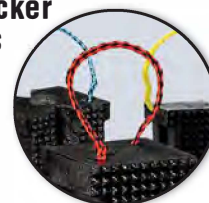
FOR TECHNICAL DATA, CONTACT: sales@ameintl.net - 877.755.4263  
DANGER: NO POINT SOURCE LOADING OR ALTERING OF PRODUCT

## OSHA 1926.305(d)(1)(i):

After the load has been raised, it shall be cribbed, blocked, or otherwise secured at once.



**Colored-coded lanyards  
depict each Stacker  
cribbing block's  
working  
-load limit,  
at a glance!**



**Pyramid surface does not  
rot or splinter, is resistant  
to pests, fungus, oils, as  
well as other harmful  
materials, and also  
allows for a variety  
of secure stacking  
methods!**



	Model	Dimensions	Lanyard	Weight
A	15203	4" x 4" x 30"	Orange	17.0 lbs (7.7 kg)
B	15230	6" x 7" x 24"	Blue	25.4 lbs (11.5 kg)
C	15234	6" x 7" x 24"	Yellow	12.0 lbs (5.4 kg)
D	15245	6" x 7" x 30"	Orange	39 lbs (17.7 kg)
E	15239	6" x 7" x 24"	Orange	27.3 lbs (12.3 kg)
H	15210	4" x 4" x 18"	Yellow	6.25 lbs (2.8 kg)

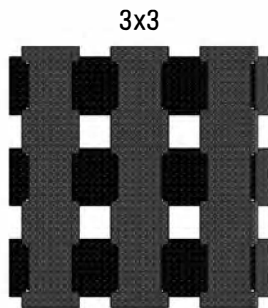


**SEE PAGE 7 FOR  
CRIBBING KITS**

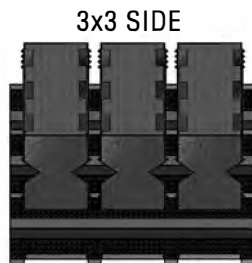


## STACKER CRIBBING KITS

- 100% recycled plastic
- Unmatched strength – stronger than wood
- Resistant to gas, oil, and chemicals
- Certified tested
- 50 year warranty against splitting, rot, fluid absorption, termites, or mold caused by the environment
- Made in the USA
- Compatible with **#14500-#14503** and **#14468LT** Jack Plates



3x3



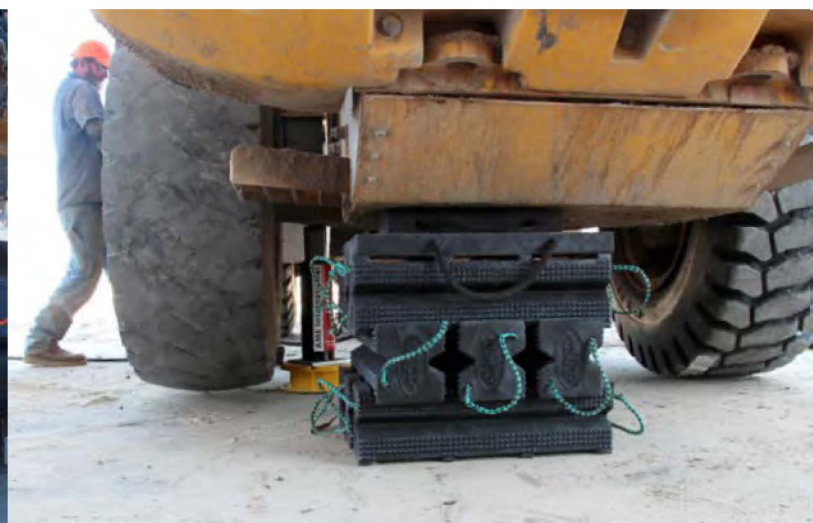
3x3 SIDE

## STACKER CRIBBING KITS

Kit No.	15230	15239	14468	14468LT	14503
15260	12				
15260P		12			
15254	24		1		
15254P		24	1		
15661	30				
15661P		30			
15266PL	12			1	
15266PL		12		1	
115269PL		12		2	
15266PLB		12		1	1

**OSHA 1926.305(d)(1)(i):** After the load has been raised, it shall be cribbed, blocked, or otherwise secured at once.

**SCAN HERE FOR MORE PRODUCT INFO AND TO SEE OUR WORKING LOAD LIMIT CHART**





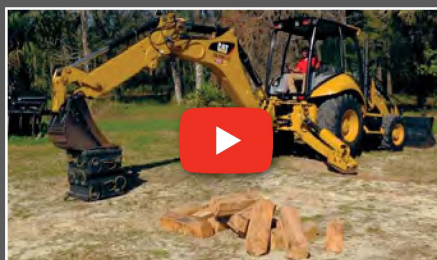
## THE SLAB CRIBBING BLOCKS

- Reassurance on the largest jobs
- Heavy duty construction
- Available in full slab or half slab
- Orange lanyard dictating high working load limit

Item	Dimensions	Weight
15231	6" x 12" x 24" Full Slab	55 lbs (25 kg)
15232	6" x 12" x 12" Half Slab	26.5 lbs (12 kg)



## STACKER CRIBBING VS. WOOD



**SCAN TO  
WATCH**



Attribute	Stacker	Wood
Lightweight	✓	✗
Maintenance Free	✓	✗
Resistant to Oil, Fuels, and Lubricants	✓	✗
Lab Tested	✓	✗
Environmentally Sound	✓	✗
Certified	✓	✗
Warranty*	✓	✗
Stacking Stability	✓	✗
Individual PSI Rating	✓	✗

\*Against splitting, rot, fluid absorption, termites or mold

### NEW COLOR-CODED WORKING LOAD LIMIT LANYARDS

#15230 Stacker  
Cribbing

#15210 Stacker  
Cribbing

**Compact & Versatile**



#15230 Stacker  
Cribbing

**Cut-Out Shape  
Reduces Weight**



#15239 Primo Cribbing

**Solid Body Increases  
Load Capacity  
& Security**



**High Vis  
Yellow**

**Yellow = Light**

**Total Block Working  
Load Limit Range**  
0 kg – 21,000 kg  
(0 lbs – 46,297 lbs)

**Blue**

**Blue = Medium**

**Total Block Working  
Load Limit Range**  
21,000 kg – 50,000 kg  
(46,297 lbs – 110,231 lbs)

**High Vis  
Orange**

**Orange = Heavy**

**Total Block Working  
Load Limit Range**  
50,000 kg – 100,000 kg  
(110,231 lbs – 220,462 lbs)



**SEE PAGE 7 FOR  
STACKER CRIBBING KITS**



## #14462-#14473 JACK PLATES



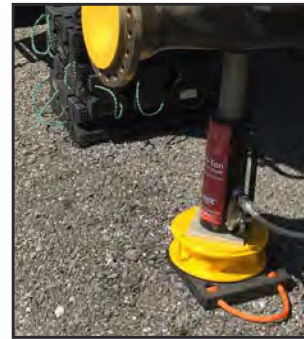
- Jack plates provide greater stability to bottle jacks, hydraulic rams, jack stands and cribbing
- Lightweight and easy to handle
- Non-skid surface to prevent jacks from sliding under wet or oily conditions
- Durable high density polymer resists the elements
- All AME International Jack Plates are proudly manufactured in the USA

**NEW**

**COLOR-CODED  
WORKING LOAD  
LIMIT LANYARDS**

**Blue**      **High Vis Orange**  
**Blue = Medium**      **Orange = Heavy**

**OSHA** Complies with OSHA regulation 29 CFR 1926.305, "When it is necessary to provide a firm foundation, the base of the jack shall be blocked or cribbed."



Model	Length	Width	Thickness	Lanyard	Weight
14462	36" (91 cm)	36" (91 cm)	2.5" (6.4 cm)	Orange	118 lbs (53.5 kg)
14463	36" (91 cm)	36" (91 cm)	3" (7.6 cm)	Orange	135 lbs (61.2 kg)
14464	12" (30.5 cm)	12" (30.5 cm)	1" (2.54 cm)	Blue	5 lbs (2.3 kg)
14465	12" (30.5 cm)	12" (30.5 cm)	1.5" (3.81 cm)	Orange	8 lbs (3.6 kg)
14466	18" (45.7 cm)	12" (30.5 cm)	3" (7.62 cm)	Orange	21 lbs (9.5 kg)
14468	24" (61 cm)	24" (61 cm)	2" (5.08 cm)	Orange	24 lbs (10.9 kg)
14468LT	24" (61 cm)	24" (61 cm)	2" (5.08 cm)	Orange	24 lbs (10.9 kg)
14469	18" (45.7 cm)	18" (45.7 cm)	2" (5.08 cm)	Orange	20 lbs (9.1 kg)
14472	18" (45.7 cm)	18" (45.7 cm)	1" (2.54 cm)	Blue	15 lbs (6.8 kg)
14473	18" (45.7 cm)	18" (45.7 cm)	1.5" (3.81 cm)	Orange	16 lbs (7.3 kg)

## #14468LT LOCKY-TOP 24" x 24" x 2" JACK PLATE

- Locky Top Jack plates provide greater stability to bottle jacks, hydraulic rams, jack stands and cribbing
- Lightweight and easy to handle
- Non-skid surface to prevent jacks from sliding under wet or oily conditions
- Durable high density polymer resists the elements
- **#14503** Bottom Locky-Top Jackplate designed to secure base of cribbing block stack
- Capacity: 100 Tons
- Length: 24" (61 cm)
- Width: 24" (61 cm),
- Height: 2" (5.08 cm)
- Weight: 24 lbs (10.9 kg)



**SECURELY  
LOCKS  
CRIBBING**

**NEW**

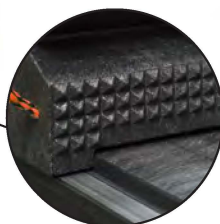


## #14500-#14503 GRIP-IT SERIES JACK PLATES

- New pyramid surface on one side is designed to mate with Stacker Cribbing Blocks pyramid surface for secure, exact fit, as well as provide better grip onto uneven terrain in the field
- Provides increased stability and gripping-surface
- Complies with OSHA regulation 29 CFR 1926.305
- Capacity: 100 Tons
- Model **#14503** locks onto Stacker Cribbing, helping to secure the load while preventing the release of hazardous energy



**NEW**



Model	Type	Length	Width	Height	Weight
14500	Standard Plate	12 in (305 mm)	12 in (305 mm)	2 in (51 mm)	8.8 lbs (4 kg)
14501	Standard Plate	12 in (305 mm)	24 in (607 mm)	2 in (51 mm)	17.8 lbs (8.1 kg)
14468B	Standard Plate	24 in (607 mm)	24 in (607 mm)	2 in (51 mm)	36.3 lbs (16.5 kg)
14503	Bottom Locking Plate	27 in (686 mm)	24 in (607 mm)	2 in (51 mm)	38.4 lbs (17.5 kg)

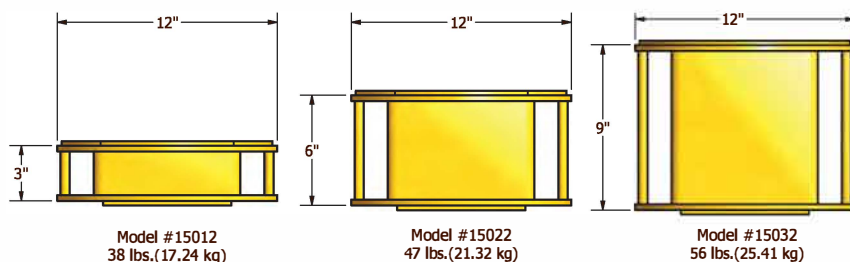




## #15002 STEEL CRIBBING KIT



- Steel cribbing is durable - will not bend or warp
- Model **#15002** is a complete set - includes: 3", 6" and 9" stands
- Units can be stacked together for 18" total lift
- Recessed area on cribbing fits 7" square plate on 55 ton cylinders
- Built in carrying handle
- Tested/Certified up to 100 tons
- Use with **AME Jack Plates** to secure load and reduce hazardous energy



Model	Description	Weight
15012	3" Crib Stand	38 lb (17.24 kg)
15022	6" Crib Stand	47 lb (21.32 kg)
15032	9" Crib Stand	56 lb (25.41 kg)



**SECURELY LOCKS  
LOAD FOR MAXIMUM  
STABILITY**



# #14304 FORKLIFT STABILIZATION KITS (COMPOSITE CRIBBING & WHEEL CHOCKS)



- Kits contain both the basic Composite Cribbing and Wheel Chocks components
- A convenient carrying bag is provided for smaller parts
- Keeps forklift and service truck stable during repairs
- Creates a safer repair environment for technicians

Kit Includes:

- (2) Wheel Chocks
- (2) Bessy Clamp
- (2) Stockpicker Rizer
- (2) Little Black Diamond Crib
- (2) 4"x4"x48" Stacker (2)
- 4"x4"x22" EverBlock
- (1) Carrying Bag

# #15667 #15668 #15669 SASQUATCH FOR TRACKED VEHICLES, PORTABLE & DURABLE, PADDED HANDLES



- Low-boy loading your track vehicle is a snap with the new Sasquatch, part of the Stacker line
- Heavy duty construction with a 45° angle grade and three sizes to choose from
- Made in the U.S.A of 100% recycled plastic

Model	Description	Weight
15667	24"x8"x20.75"	108 lbs. (48.9 kg)
15668	24"x8"x16.5"	81 lbs. (36.7 kg)
15669	24"x8"x10.375"	54 lbs. (24.5 kg)



# #36555 LOCK-OUT TAG-OUT KITS

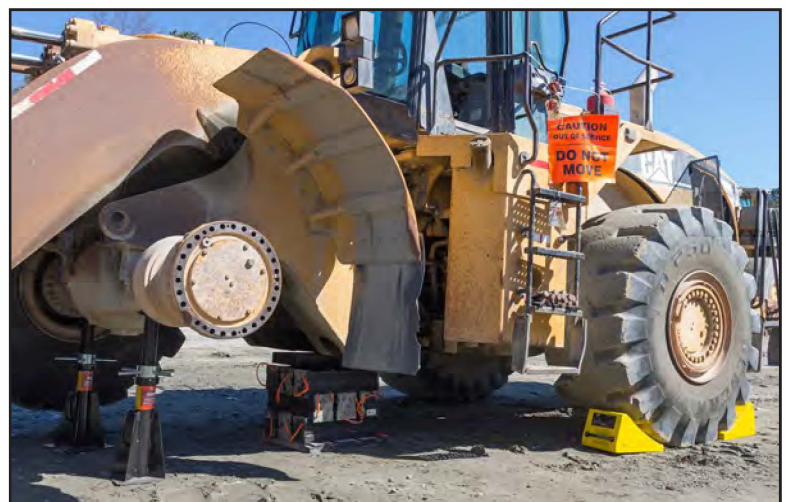
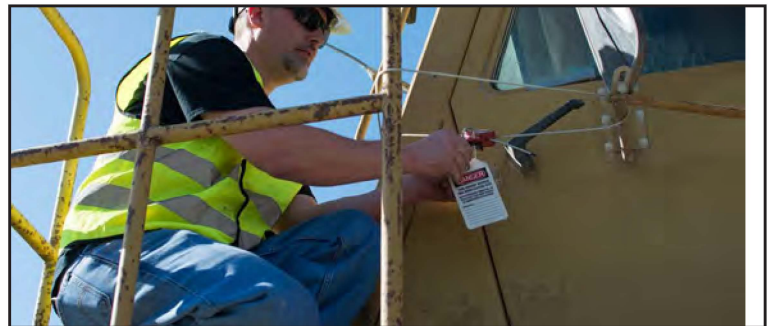
- The basic AME Lock-Out Tag-Out Kit (**#36555**) includes:
  - (1) **#95010** Tailgate Warning Flag
  - (1) **#95025** "Do Not Start or Move Vehicle" Wheel Cover, 24"
  - (1) **#95030** Plastic Body Aluminum Padlock
  - (1) **#95035-1** "Do Not Operate Equipment" Tag
  - (1) **#BL8** 8" Black Zip Ties (Bundle of 100)
- Model **#36300** Commercial Truck Lock Out Tag Out Kit includes all items in the **#36555** Kit as well as:
  - (2) **#15325** Orange Urethane Wheel Chocks
- Model **#36400** EarthMover Lock Out Tag Out Kit include all items in the **#36555** Kit as well as:
  - (2) **#15301** Black Urethane Wheel Chocks
  - (1) Standard Steel Hasp, 1.5"



#95025



#95010



# SHURE-STEP®

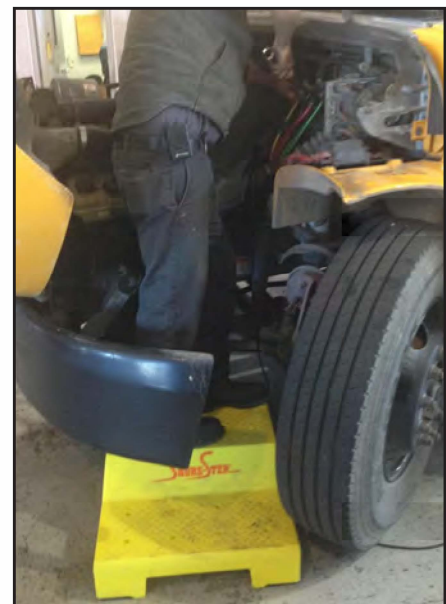
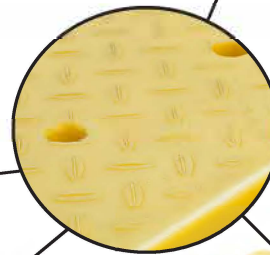
## SAFETY STEP STOOLS



- All Shure-Steps® are heavy duty, rated for 500 pounds
- Some Shure-Steps® are stackable, so if the 10 inch height isn't quite enough for your mechanic, just throw another Shure-Step® on top and "Presto!" ... now your mechanic is 16 inches off the ground on a safe and sturdy step
- The Shure-Steps® have 6 large rubber pads on the bottom to keep them from sliding on slick wet floors
- All the Shure-Step® models come in high-vis yellow
- The super rough top surface (Nobby Top) makes the step safe to use even after spilling oil or hydraulic fluid on them



Model	Description	Capacity	Dimensions	Weight	Stackable?
15631	10" Shure-Step® II Nobby Top	500lbs (226.8 kg)	24"H x 13.5" W x 10" H	8lbs (3.63 kg)	Yes
15632	10" Aviation Step Stool, Nobby Top	500lbs (226.8 kg)	24"H x 13.5" W x 10" H	9lbs (4.08kgs)	Yes
15633	10" Shure-Step® III Nobby Top	500lbs (226.8 kg)	39"H x 15.5" W x 10" H	16lbs (7.26kg)	No
15634	Bus Mechanic Step	500lbs (226.8 kg)	24" x 24" Base, First Step 6"H, Second Step 12"H	16lbs (7.26kg)	No





## #14385 5 TON / 4 TON FORKLIFT JACK

- Designed specifically for use on forklifts
- Features specially designed seals
- Strong steel construction with low pickup height
- 2.5" low clearance - jack fits under extremely low lift trucks
- Capacity: 5 tons on piston, 4 tons on scissor
- Minimum height: 2.5" (6.4 cm) low clearance
- Maximum height: 16" (40.64 cm) max lifting height
- Weight: 69 lbs (31 kg)



## #14370 7.5 TON FORKLIFT JACK

- Capacity: 7.5 tons
- Minimum height: 2.25" (5.7 cm) low clearance
- Maximum height: 16.6" (41 cm) max lifting height
- Weight: 99 lbs (45 kg)



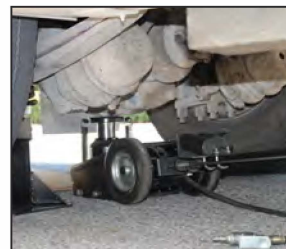
## #FJ40 AC HYDRAULIC 4.4 / 5.5 TON FORKLIFT JACK

- Jack for forklifts and low clearance vehicles
- Also suitable for agriculture and industry
- Extremely low minimum height of only 2.17 in
- With 2 lifting heights (scissors 2.17-17.91 in, cylinder 16.14-28.74 in)
- Scissor capacity: 8800 lb
- Cylinder capacity: 11000 lb
- Foldable, convenient for service trucks
- Wide and robust frame made of high-strength steel
- Precise and safe control by lowering
- Built-in safety overload valve



## #14140 22-TON AIR/HYDRAULIC SERVICE JACK

- Air operated & easy to maneuver (operates with only 80 psi of air pressure)
- Single piece handle - will not break
- Extension saddles include: 1 of each, 1", 2", and 4"
- Min. Height: 9" (18.5 cm)
- Stroke Length: 6" (15 cm)
- Weight: 90 lbs (41 kg)



## #14460 #14475 20 TON / 30 TON TITAN AIR/HYDRAULIC BOTTLE JACKS



- Chromed ram and aluminum air motor for long life
- Heavy duty return springs
- Each unit factory tested at 150% overload

Model	Capacity	Min. Height	Max. Height	Weight
14460	20 Tons	9.7" (24.5 cm)	18.5" (46 cm)	38 lbs (17.5 kg)
14475	30 Tons	11" (27.9 cm)	18" (45.7 cm)	60 lbs (27 kg)

## #14461 20 TON TITAN LOW PROFILE AIR/HYDRAULIC BOTTLE JACK



- Cylinder is welded to the base, assuring strength and eliminating leaks
- Chromed pump piston and ram for added rust resistance
- Extension screw gives added height when necessary
- Meets ANSI/ASME PALD & CE/GS standards
- Super low minimum height for easy access
- Capacity: 20 tons
- Dimensions: Height: 6" (15.3 cm), Length: 13" (33 cm)  
Width: 5" (12.7 cm)
- Minimum Height: 5.8" (14.8 cm), Maximum Height: 10" (25.6 cm)
- Weight: 21 lbs (9.5 kg)

## #14470 20-TON TITAN AIR/HYDRAULIC CART JACK



- Welded steel base, heavy duty return springs
- Chromed ram and aluminum air motor for long life
- Capacity: 20 tons
- Each unit factory tested at 150% overload
- 36" long handle allows for easy placement of jack under vehicle
- Minimum Height: 10" (25.5 cm), Maximum Height: 19" (48 cm)
- Weight: 55 lbs (55 kg)



## AC HYDRAULIC HYDRAULIC JACKS



**GS-1**  
**Rubber Cushion**  
For protection of car body



AC Hydraulic<sup>AS</sup> BY



AME International presents AC Hydraulic<sup>AS</sup> Hydraulic Jacks, available in several models designed for passenger cars, low clearance cars, vans, and SUVs.

Each jack is manufactured with a very low minimum height of only 3.15" (8 cm), a handle length of 37.4" (95 cm), as well as a wide and robust frame made of high-strength steel. Each model is fitted with quick-lift pedal for easy reach of lifting point and operates with precise and safe control while lowering. Manual dead man's release is also included for optimum safety when lowering, along with a built-in safety overload valve. Noiseless wheels incorporating a polyurethane central o-ring offer maximum surface protection. Ergonomically designed handle also ensures positive and safe operation.

Model	Capacity	Min. Height	Max. Height	Total Width	Frame Length	Weight
DK20Q	2.2 tons	3.15" (8 cm)	19.49" (49.5 cm)	16.14" (41 cm)	25.98" (66 cm)	68 lbs (31 kg)
DK13HLQ	1.45 tons	3.15" (8 cm)	28.94" (73.5 cm)	18.9" (48 cm)	37.01" (94 cm)	68 lbs (31 kg)
DK20HLQ	2.2 tons	3.15" (8 cm)	31.3" (79.5 cm)	19.69" (50 cm)	37.4" (95 cm)	108 lbs (49 kg)

## AC HYDRAULIC HYDRAULIC JACK ACCESSORES



### #GSI RUBBER CUSHION

For protection of car body

Fits:  
DK20 / DK20Q  
DK13HLQ / DK20HLQ  
T3



### #G4 HIGH QUALITY PNEUMATIC TIRES

For easy transport and extra maneuverability – also on uneven floors

Fits:  
DK40Q / DK60Q  
DK100Q / DK120Q  
DK50HLQ



### #T3 CROSS BEAM ADAPTOR

Lifts the car for change of both wheels at the same time

With telescopic arms, reach from 29.33 – 45.27 in (745 – 1150mm)

Fits:  
DK20 / DK20Q  
DK13HLQ / DK20HLQ



### #FDK1 EXTENSION

Extension for cars with high clearance (3.93 in / 100 mm)

Fits:  
DK20 / DK20Q  
DK13HLQ / DK20HLQ



### #FDK2 EXTENSION

Extension for cars with high clearance (4.91 in / 125 mm)

Fits:  
DK40Q / DK60Q  
DK100Q / DK120Q / DK50HLQ

# AC HYDRAULIC AIR/HYDRAULIC JACKS



AC Hydraulic<sup>A/S</sup>  
NO COMPROMISE



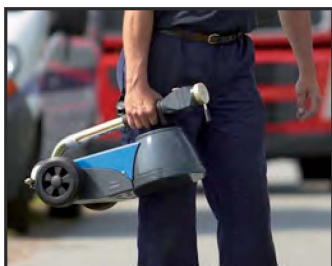
AME International presents  
AC Hydraulic<sup>A/S</sup> Air Hydraulic  
Jacks, designed for heavy-duty,  
intensive commercial use.

- Hard chromium plated piston rod for long life.  
Built-in safety overload valve.
- Hand-operated dead-man's control for optimum  
safety while lifting and lowering.
- Portable air hydraulic jack also available, ideal for  
service vans, etc.
- Handy design - no loose tubes, handles, or valves.
- All air hydraulic jacks have an air supply of 130 -  
174 psi and an air consumption of 350 l/min.
- Air hydraulic jacks have a handle length of 53.35"  
(135.5 cm).
- Portable air hydraulic jack (B25-2)
- Handle Length: 21.65" (55 cm).



**10** YEAR  
**3** YEAR  
UNLIMITED  
WARRANTY

Model	Capacity	Min. Height	Max. Height	Total Width	Frame Length	Weight	Included Extensions
B25-2	25 / 10 tons	6.3" (16 cm)	9.3" / 12.6" (23.5 / 32 cm)	11.4" (29 cm)	21.1" (53.5 cm)	61.7 lbs (28 kg)	2" / 3.9" (5 / 10 cm)
25-1	25 tons	8.7" (22 cm)	13.6" (34.5 cm)	12" (30.5 cm)	30.3" (77 cm)	136.7 lbs (62 kg)	2" / 3.9" (5 / 10 cm)
25-1H	25 tons	14.2" (36 cm)	24" (61 cm)	12.2" (31 cm)	32.3" (82 cm)	156.5 lbs (71 kg)	2" / 3.9" (5 / 10 cm)
25-2	25 / 10 tons	7.1" (18 cm)	10.8" / 15" (27.5 cm / 38 cm)	12" (30.5 cm)	30.3" (77 cm)	132.3 lbs (60 kg)	2" / 3.9" (5 / 10 cm)
40-4	40 / 27 / 16 / 10 tons	3.94" (10 cm)	5.71" / 7.09" / 9.06" / 10.83" (14.5 / 18 / 23 / 27.5 cm)	10.04" (25.5 cm)	24.80" (63 cm)	110 lbs (50 kg)	2" / 3.9" (5 / 10 cm)
50-2	50 / 25 tons	8.7" (22 cm)	13.4" / 17.7" (34 cm / 45 cm)	12.4" (31.5 cm)	31.9" (81 cm)	176.4 lbs (80 kg)	2" / 3.9" (5 / 10 cm)
50-3	50 / 25 / 10 tons	5.9" (15 cm)	8.3" / 10.4" / 13.2" (21 / 26.5 / 33.5 cm)	12.2" (31 cm)	31.9" (81 cm)	147.7 lbs (67 kg)	2" / 3.9" (5 / 10 cm)
50-3H	50 / 25 / 10 tons	8.70" (22 cm)	13.31" / 17.60" / 22.05" (34 / 45 / 56 cm)	12.2" (31 cm)	31.9" (81 cm)	161 lbs (73 kg)	Not included



## B25-2

### Portable air hydraulic jack

Handy design - no loose tubes,  
handles, or valves.

Easy to operate -  
handle can be used for  
carrying, lifting, lowering,  
and maneuvering.



## SBB

### Wall bracket for B25-2

Safe storage in service vans.  
Neat and practical wall mounting  
in the workshop.



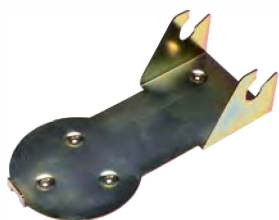
## #65-1 #65-1H AC HYDRAULIC HEAVY DUTY AIR/HYDRAULIC JACK

- Air hydraulic jack for heavy duty/intensive commercial applications with high clearance
- Hard chromium plated piston rod for long life
- Built-in safety overload valve
- Hand-operated dead-man's control for optimum safety while lifting and lowering
- Ergonomic handle with push buttons



Model	Capacity	Min. Height	Max. Height	Total Width	Frame Length	Weight	Included Extensions
65-1	65 tons	9.65" (24.5 cm)	28.50" (38 cm)	15.04" (38 cm)	32.44" (83 cm)	209 lbs (95 kg)	3.94 / 7.87 in (10 / 20 cm)
65-1H	65 tons	16.65" (43 cm)	28.50" (73 cm)	15.04" (38 cm)	38.66" (98 cm)	304 lbs (138 kg)	3.94 / 7.87 in (10 / 20 cm)

## AC HYDRAULIC HYDRAULIC JACK ACCESSORIES



### #SBB TRANSPORT LOCKING DEVICE AND WALL BRACKET FOR B25-2

Safe storage in service vans. Prevents damages in cases of emergency stops. Neat and practical wall mounting in the workshop.

Fits:  
B25-2



### #F250 EXTENSION

Increase the maximum height by 250 mm  
Cannot be used together with other extensions

Fits:  
B25-2  
25-1 / 25-1H  
25-2  
50-2 / 50-3



### #FW JACK SADDLE

Ø 145 mm.  
Suitable for lifting under bolts, differential gear etc.

Fits:  
B25-2  
25-1 / 25-1H  
25-2  
40-4  
50-2  
50-3



### #FW1 V-SADDLE

For lifting under different types of axles

Fits:  
B25-2  
25-1 / 25-1H  
25-2  
40-4  
50-2  
50-3



# AC HYDRAULIC MINING JACKS



AC Hydraulic<sup>AS</sup>  
NO COMPROMISE



AME International presents AC Hydraulic<sup>AS</sup> heavy duty jacks for low clearance machinery in mining and construction industries.

- All steel, heavy duty chassis built to fit harsh environments.
- Large rubber tires allow easy positioning on challenging surfaces.
- Innovative chassis construction facilitates jack repair and even wheel changing on site.
- High ground clearance for clearing rail and rough terrain.
- Multiple position handle for easy tilt back and moving.
- Handle with dead-man's release for optimum safety during lifting and lowering.
- Mining jack handle length: 51.2" (130 cm).



Model	Capacity	Min. Height / Max. Height	Total Width	Frame Length	Air Supply	Air Consumption	Ground Clearance	Weight
100-1L	100 tons	17.1" (43.5 cm) / 22.4" (57 cm)	18.3" (46.5 cm)	61" (155 cm)	145 psi	42 cfm	1.6" (4 cm)	731.9 lbs (332 kg)
150-1L	150 tons	17.1" (43.5 cm) / 22.4" (57 cm)	18.3" (46.5 cm)	61" (155 cm)	145 psi	42 cfm	1.6" (4 cm)	731.9 lbs (332 kg)
100-1	100 tons	27.6" (70 cm) / 43.3" (110 cm)	27" (68.5 cm)	66" (167.5 cm)	145 psi	42 cfm	2.6" (6.5 cm)	1049.4 lbs (476 kg)
150-1	150 tons	27.6" (70 cm) / 43.3" (110 cm)	27" (68.5 cm)	66" (167.5 cm)	145 psi	42 cfm	2.6" (6.5 cm)	1049.4 lbs (476 kg)
100-1H	100 tons	37.4" (95 cm) / 63" (160 cm)	27" (68.5 cm)	66" (167.5 cm)	145 psi	42 cfm	2.6" (6.5 cm)	1203.7 lbs (546 kg)
150-1H	150 tons	37.4" (95 cm) / 63" (160 cm)	27" (68.5 cm)	66" (167.5 cm)	145 psi	42 cfm	2.6" (6.5 cm)	1203.7 lbs (546 kg)

## FHD100 / FHD200 Extensions

Increases lifting height by 3.9" (10 cm) / 7.9" (20 cm)



## SB65 / SB100 / SB150 Locking Rings

SB65: 6.5 cm

Fits: All models

SB100: 10 cm

Fits: 100-1 / 150-1, 100-1H / 150-1H

SB150: 15 cm

Fits: 100-1 / 150-1, 100-1H / 150-1H



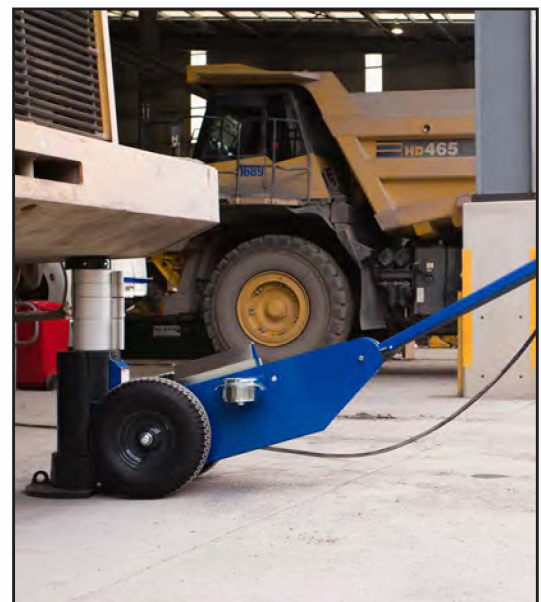
## BHD Locking Ring Holder

Allows for the locking rings to be stored on the jack (Included in Locking Ring Kit)



## HHD Extension Holder

Allows for extensions to be stored on the side of the jack





# SUPERLIFT® MINING JACKS



Air/Hydraulic Mining Jacks from 100 – 250 Ton. Each jack comes with custom extensions based on your specific application. Electric power unit available. Optional Power Drive System available on jacks 150 Ton and larger. Power Drive System self propels SLJ Jack over terrain with no effort from operator.



Model	Capacity (Tons)	Min. Height	Max. Height	Total Width	Frame Length	Handle Height	Cylinder Base	Weight
SLJ10027	100	27" (69 cm)	43" (109 cm)	29" (74 cm)	96" (244 cm)	40" (101 cm)	13" (33 cm)	771 lbs (350 kg)
SLJ10038	100	38" (97 cm)	65" (165 cm)	29" (74 cm)	96" (244 cm)	40" (101 cm)	13" (33 cm)	851 lbs (386 kg)
SLJ15027	150	27" (69 cm)	43" (109 cm)	29" (74 cm)	96" (244 cm)	40" (101 cm)	15" (38 cm)	794 lbs (360 kg)
SLJ15038	150	38" (97 cm)	65" (165 cm)	29" (74 cm)	96" (244 cm)	40" (101 cm)	15" (38 cm)	905 lbs (410 kg)
SLJ20027	200	27" (69 cm)	43" (109 cm)	32" (82 cm)	96" (244 cm)	40" (101 cm)	15" (38 cm)	1243 lbs (564 kg)
SLJ20038	200	38" (97 cm)	65" (165 cm)	32" (82 cm)	96" (244 cm)	40" (101 cm)	15" (38 cm)	1345 lbs (610 kg)
SLJ25027	250	27" (69 cm)	43" (109 cm)	32" (82 cm)	96" (244 cm)	40" (101 cm)	15" (38 cm)	1415 lbs (640 kg)
SLJ25038	250	38" (97 cm)	65" (165 cm)	32" (82 cm)	96" (244 cm)	40" (101 cm)	15" (38 cm)	1555 lbs (705 kg)



## SUPERLIFT® EXTENSIONS & LOCKING COLLARS

### JACK / STAND CAPACITY

EXTENSION HEIGHT	JACK CAPACITY	40/60 tons	80 tons	100 tons	150 tons	200 tons
	STAND CAPACITY		100/150 tons	200/250 tons	300/350 tons	
6"	SLJE506	SLJE606	SLJE706	SLJE806	SLJE906	
8"	SLJE508	SLJE608	SLJE708	SLJE808	SLJE908	
10"	SLJE510	SLJE610	SLJE710	SLJE810	SLJE910	
12"	SLJE512	SLJE612	SLJE712	SLJE812	SLJE912	
16"	SLJE516	SLJE616	SLJE716	SLJE816	SLJE916	
18"	SLJE518	SLJE618	SLJE718	SLJE818	SLJE918	

Locking Collar Top Cap

1" (2.54 cm) Aluminum Locking Collar

2" (5.08 cm) Aluminum Locking Collar

3" (7.62 cm) Aluminum Locking Collar

5" (12.7 cm) Aluminum Locking Collar

Locking Collar Adapter

#1 - Lift Load

#2 - Insert aluminum locking collars as required to support load

#3 - Lower load on locking collars

## LOCKING COLLAR SETS

Model	Description
SLJLC150K	Locking Collar Set for SuperLift (100 to 150 Ton). Included are Locking Collars: SLJLC150-1, SLJLC150-2, SLJLC150-3, SLJLC150-6, SLJLC150-AR, SLJLC150-TC
SLJLC350K	Locking Collar Set for SuperLift (200 to 350 Ton). Included are Locking Collars: SLJLC350-1, SLJLC350-2, SLJLC350-3, SLJLC350-4, SLJLC350-AR, SLJLC350-TC

## #SLJS60-#SLJS200 SUPERLIFT® JACK STANDS

- Custom heights can be determined upon order to meet the customer's needs
- Saddle and custom extension supplied with each stand
- Certificates of conformity supplied for international and domestic requirements

Model	Capacity	Min. Height	Adjustable	Weight
SLJS60	60 tons	24" (60.96 cm)	Yes	220 lbs (99.79 kg)
SLJS100	100 tons	24" (60.96 cm)	No	353 lbs (160.12 kg)
SLJS100-28A	100 tons	28" (71.12 cm)	Yes	353 lbs (160.12 kg)
SLJS100-038A	100 tons	38" (96.52 cm)	Yes	353 lbs (160.12 kg)
SLJS150-32A	150 tons	32" (81.28 cm)	Yes	425 lbs (192.78 kg)
SLJS150-42A	150 tons	42" (106.68 cm)	Yes	425 lbs (192.78 kg)
SLJS150-50A	150 tons	50" (127 cm)	Yes	425 lbs (192.78 kg)
SLJS200	200 tons	32" (81.28 cm)	No	639 lbs (289.85 kg)
SLJS200-42	200 tons	42" (106.68 cm)	Yes	639 lbs (289.85 kg)

## #SLJST100-#SLJST200 SUPERLIFT® JACK STAND TRANSPORTERS

- Support weight with engineered safety stands
- Meets international safety standards
- Heavy duty steel plate to ensure longevity
- Transporter allows for easy placement

Model	Capacity	Weight
SLJST100	100 tons	154 lbs (69.85 kg)
SLJST150	150 tons	159 lbs (72.12 kg)
SLJST200	200 tons	164 lbs (74.39 kg)





## #13154 #13155 55-100 TON LOAD LOCK'R ALUMINUM JACKS

- Aluminum lock nut provides mechanical load holding for extended periods
- Composite bearings increase cylinder life and side load resistance
- Equipped with bolt-on hardened steel saddle
- Hard coat finish resists damage and extends cylinder life

Model	Capacity	Stroke	Min. Height	Max. Height	Weight
13154	55 tons	6" (15 cm)	13.2" (33.5 cm)	19.1" (48.5 cm)	26.2 lbs (11.9 kg)
13155	100 tons	6" (15 cm)	15.6" (39.6 cm)	21.5" (54 cm)	58 lbs (26 kg)



## #13121 #13141 55 TON PRO-SERIES ALUMINUM JACKS

- Lightweight aluminum lifting cylinder, easy handling and placing under the vehicle
- Includes "Shut-Off Valve" which allows the pump to be removed while the ram is extended
- Aluminum base plate included
- Recessed base plate allows jacks to nest inside
- Low profile saddle ensures precise lifting

Model	Capacity	Stroke	Min. Height	Max. Height	Weight
13121	55 tons	6" (15 cm)	11.75" (30 cm)	17.75" (46 cm)	29 lbs (13.2 kg)
13155	55 tons	10" (25 cm)	15.75" (41 cm)	25.75" (66.5 cm)	38 lbs (17.2 kg)



## #13000 100-TON BLACKJACK SERIES ALUMINUM JACKS

- Includes "Shut-Off Valve" to allow the pump to be removed while ram is extended
- 6" (15 cm) stroke
- 12" (30.5 cm) retracted height
- 18" (48 cm) max. height
- Weight: 53 lbs (24 kg)



## #14410 #14415 20 TON SCREW STYLE JACK STANDS

- Screw style stand easily holds load at desired height and secures it with locking collar
- Adjustable screw for height extension and retraction
- Quick adjustment to desired heights
- Capacity: 20 tons per stand, sold individually



Model	Capacity	Min. Height	Max. Height	Weight
14410	20 Tons	16.5" (42 cm)	26.7" (68 cm)	60 lbs (27 kg)
14415	20 Tons	26" (66.5 cm)	46" (117 cm)	87 lbs (41 kg)



**DURABLE JACK STANDS  
FOR SHOP AND FIELD  
APPLICATION**



Adjustable  
Screw



#14410



#14415





## #14360 9 TON JACK STANDS (PAIR)

- Ideal for forklift trucks
- Sturdy, welded, heavy gauge steel construction - prevents distortion
- Capacity: 4.5 tons per stand, sold in pairs
- Minimum height: 9.5" (24.1 cm)
- Maximum height: 16.5" (41.9 cm)
- Weight: 10 lbs (4.5 kg)



## #14720 10 TON JACK STANDS (PAIR)

- European design accommodates truck axles, forklifts & trailers
- 4 pin placements
- Sold in pairs
- Capacity: 5 tons per stand
- Min Height: 11.25" (28.6 cm)
- Max Height: 18" (45.7 cm)
- Weight: 10 lbs (4.5 kg)



## #14980 6 TON FLAT TOP JACK STANDS (PAIR)

- Flat Top rubber pad grips the lifting point
- Ideal for low profile vehicles or custom cars
- Powder coat finish on base
- Zinc plated post to prevent rust
- Sold in pairs
- Capacity: 3 tons per stand
- Min Height: 13" (33 cm)
- Max Height: 21.5" (54.6 cm)
- Weight: 12 lbs. (5.5 kg)



## #14985 6 TON HIGH LIFT JACK STANDS (PAIR)

- Ideal for light aircraft, flat top rubber pad grips the lifting point
- Powder coat finish on base, zinc plated post to prevent rust
- Capacity: 3 tons per stand, sold in pairs
- Minimum Height: 19" (48.3 cm), maximum height: 31.5" (80 cm)
- Weight: 36.5 lbs (16.6 kg)





## #14400 40 TON HEAVY DUTY JACK STANDS (PAIR)

- Sturdy steel construction for superior safety and strength
- Heavy gauge, steel frame helps prevent distortion or twisting
- Capacity: 20 tons per stand, sold in pairs
- Min. Height: 9.5" (24.1 cm), Max. Height: 19.9" (50.5 cm)
- Weight: 68 lbs (30.8 kg) (Pair)



## #14405 40 TON, ADJUSTABLE TOP JACK STANDS (PAIR)

- 3 lock pin settings for adjustable heights
- Adjustable Swivel allows for 2" of variance at locked settings
- Capacity: 20 tons per stand, sold in pairs
- Min. Height: 12.5 in (31.75 cm), Max. Height: 21.9" (55.63 cm)
- Weight: 76 lbs (34.4 kg) (Pair)



## #14425 24 TON HEAVY DUTY JACK STANDS (PAIR)

- Sturdy steel construction for superior safety and strength
- Heavy gauge, steel frame helps prevent distortion or twisting
- Capacity: 12 tons per stand
- Min. Height: 11.81" (30 cm), Max. Height: 18.11" (46 cm)
- Weight: 46 lbs (20.8 kg) (Pair)





## #14220 20 TON HEAVY DUTY JACK STAND

- Used to support (block) track-type or rubber tired vehicles
- Height Range: 23.55" - 34.05" (Standard) ; 34.05"-44.55" (with optional Medium Tube 14220-002)
- Can be used with separate lifting devices or hydraulic jacks
- Designed to be used in pairs, Weight Load Limit for one Jack Stand is 20 Tons (40,000 lbs)
- Rugged heavy-duty design with welded, all steel construction
- Dual lock-pin design provides 2 load-bearing surfaces
- Adjustable height in 19mm (0.75 in) increments
- Features retractable spring-loaded casters

### 20 Ton Jack Stand Parts / Accessories:

Standard Height Range: 23.5" - 34"

Model	Description	Qty	Weight
14220-001	Tube - Short (Included)	1	44 lbs (20 kg)
14220-002	Tube - Medium (34" - 44.5")	*	64 lbs (29 kg)

\*Accessories available but not included



## #14225 25 TON HEAVY DUTY JACK STAND

- Used to support (block) track-type or rubber tired vehicles
- Height Range: 31.85"-42.35" (with included Short Tube) ; 42.35"-52.85" (with optional 14220-002 Medium Tube) ; 49.50"-69.00" (with optional 14225-001 Long Tube) ; 65.25"-84.75" (with optional 14225-002 Extra Long Tube)
- Can be used with separate lifting devices or hydraulic jacks
- Designed to be used in pairs, Weight Load Limit for one Jack Stand is 25 Tons (50,000 lbs)
- Rugged heavy-duty design with welded, all steel construction
- Dual lock-pin design provides 2 load-bearing surfaces
- Adjustable height in 19mm (0.75 in) increments
- Features retractable spring-loaded casters

### 25 Ton Jack Stand Parts / Accessories:

Standard Height Range: 31.8" - 42.3"

Model	Description	Qty	Weight
14220-002	Tube - Short (Included)	1	44 lbs (20 kg)
14220-002	Tube - Medium (42.3" - 52.8")	*	64 lbs (30 kg)
14225-001	Tube - Long (49.5" - 69")	* **	90 lbs (41 kg)
14225-002	Tube - X-tra Long (65.2" - 84.7")	* **	120 lbs (55 kg)

\*Accessories available but not included

\*\*25 ton use only

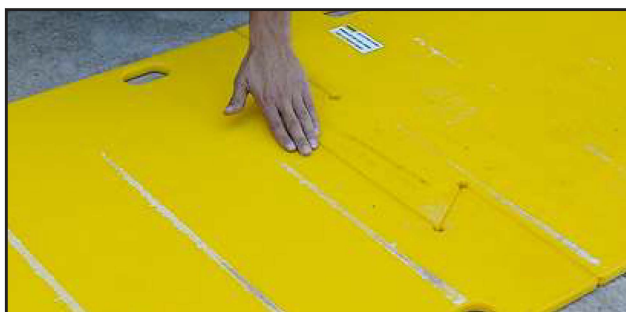
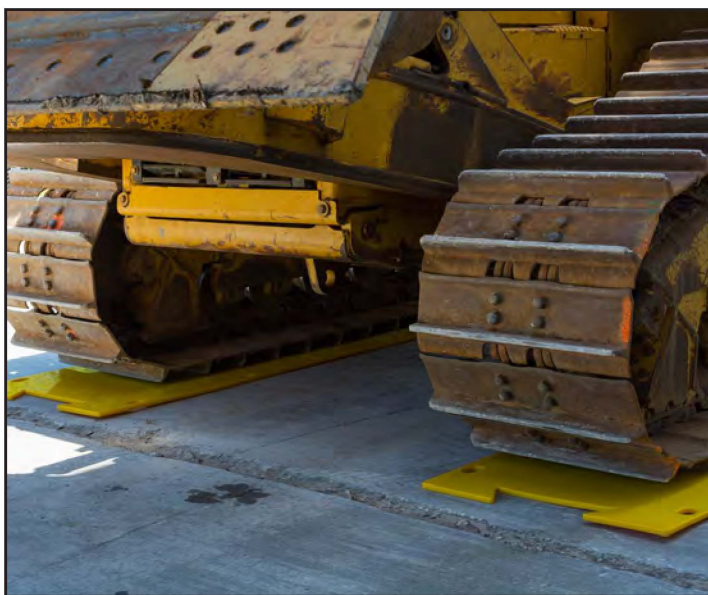


## #15345 DOZER TRACK FLOOR PROTECTION MATS



- These floor protection mats are an ideal replacement for old conveyor belt, which in the past has been a back breaking exercise moving the belt about the workshop
- They provide the protection needed against the potential damage caused by heavy dozers & excavators driving onto concrete floors while entering & exiting workshops
- Dimensions: 39 in. (1000 mm) long, 31 in. (800 mm) wide, 0.71 in. (18 mm) thick
- Weight: 39 lbs (18 kg)

**DURABLE MATERIAL  
RESISTS DAMAGE**



## #15346 STAINLESS STEEL TROLLEY

- Holds 12 dozer track floor protection pads (#15345) at a time
- Can also be maneuvered safely & packed away neatly when not in use



## #15351 #15352 BLADE REST PADS

- These polyurethane Blade Rest Pads assist in protecting the concrete surface of workshop floors as well as entry & exit areas when equipment is parked up ready for maintenance
- To be used in sets between the blade and the floor
- Rest pads are available in two different sizes (each with molded handle):

Model	Description	Length	Width	Thickness	Weight
15351	Standard	23.62" (600 mm)	7.87" (200 mm)	1.97" (50 mm)	15.4 lbs (7 kg)
15352	Large	23.62" (600 mm)	15.75" (400 mm)	1.97" (50 mm)	30.9 lbs (14 kg)



## #15349 #15350 RIPPER REST PADS

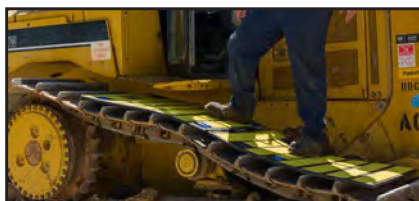
- Ripper Pads protect workshop floors while removing the problem of lifting heavy steel pads into place
- Each pad features raised edges for the ripper types without the boot

Model	Description	Length	Width	Thickness	Weight
15349	Standard	15.75" (400 mm)	18.31" (465 mm)	1.57" (40 mm)	23.2 lbs (10.5 kg)
15350	Large	26.57" (675 mm)	11.8" (300 mm)	1.97" (50 mm)	28.7 lbs (13 kg)



## #15360 #15347 #15348 #15361 DOZER MAINTENANCE MATS

- Designed to strap on to dozer tracks and eliminate slip/trip hazards associated with maintenance activities when walking on dozer tracks
- Available in two designs: A one piece ridged mat (#15360) for the workshop or in a two piece hinged mat (#15347 / #15348) suitable for the workshop or field maintenance



Model	Description	Length	Width	Weight
15360	1 pc. Standard	77.36" (1965 mm)	33.86" (860 mm)	48.5 lbs (22 kg)
15347	2 pc. Standard	78.74" (2000 mm)	28.35" (720 mm)	35.27 lbs (16 kg)
15348	2 pc. Large	78.74" (2000 mm)	33.88" (860 mm)	48.5 lbs (22 kg)
15361	1 pc. Standard	77.60" (1971 mm)	28.50" (724 mm)	45.0 lbs (20 kg)



**NEW**

# #13010-#13100 HYDRAULIC RAMS



- Single-acting
- Removable plunger adapter allows the use of a variety of threaded attachments
- Must have for heavy equipment service

**COMPACT,  
POWERFUL  
SOLUTION**

**TOOL TIP:** Avoid maximum extension of rams. 80% stroke ensures longer life.

**TOOL TIP:** Avoid pinch points or crush points that can be created by the load or parts of the cylinder. To help prevent material fatigue if the cylinder is to be used in a continuous application, the load should not exceed 85% of the rated capacity or stroke.

Model	Capacity	Stroke	Retracted Height
13010	10 Tons	2 -1/8" (5.4 cm)	4-3/4" (12.1 cm)
13020	10 Tons	4" (10.5 cm)	6-3/4" (17.14cm)
13030	10 Tons	6-1/8" (15.57 cm)	9-3/4" (24.77 cm)
13040	10 Tons	8" (20.32 cm)	11-3/4" (29.84 cm)
13050	10 Tons	10-1/8" (25.73 cm)	13-3/4" (35 cm)
13060	30 Tons	2-7/16" (6.19 cm)	4- 5/8" (11.75 cm)
13090	25 Tons	8-1/4" (21 cm)	12-3/4" (32.39 cm)
13095	25 Tons	10-1/8" (25.73 cm)	14-3/4" (37.4 cm)
13100	25 Tons	6-1/4" (15.75 cm)	10-3/4" (27.3 cm)



## #13075 STEEL-A-STACK 10-TON CAPACITY HYDRAULIC RAM KIT

- Versatile ram kit allows you to select your ram length from 3.5" (9 cm) up to 11.5" (29.21 cm)
- Steel extensions are durable enough for heavy equipment applications
- Comes with 3 extensions:
  - 1" (2.5 cm),
  - 2" (5 cm),
  - 3" (7.5 cm)
- 3" extension includes a screw-in saddle that extends another 2"
- Extensions can be used individually or together
- Ships in HD carrying case
- 10 Ton 1.5" (3.8 cm) stroke
- Weight: 11 lbs (5 kg)



**COMES WITH HD  
CARRYING CASE**



## #13076 STEEL-A-STACK 10-TON CAPACITY COMPLETE HYDRAULIC RAM KIT

- Versatile ram kit allows you to select your ram length from 3.5" (9 cm) up to 11.5" (29.21 cm)
- Steel extensions are durable enough for heavy equipment applications
- Extensions can be used individually or together
- Extensions include 1" (2.5 cm), 2" (5 cm), and 3" (7.5 cm)
- 3" extension includes a screw-in saddle that extends another 2"
- Ships in HD carrying case
- 10 Ton 1.5" (3.8 cm) stroke
- Includes hydraulic hand pump



## #51456 8 LB SOFT FACE HAMMER

- Soft face helps prevent marring
- Uni-Cast construction of non-ferrous materials eliminates sparking and won't absorb liquids
- No exposed metal on face, head or shaft, urethane covering helps reduce noise
- Dead blow function eliminates bounce-back when striking hardened surfaces
- Steel reinforced handle provides strength and resists breaking on over-strike
- Flat area on head allows upright storage
- Made in America



# HOLLOW RAMS

## SINGLE-ACTING



- Hollow plunger design allows for both pull and push forces
- Single-acting spring return
- Material: Steel
- Nickel-plated, floating center tube on models over 20 tons increases product life
- Baked enamel finish for increased corrosion resistance
- Collar threads for easy fixturing
- RCH121 includes AR-630 coupler and has 1/4 NPTF port
- RCH123 to RCH1003 feature CR-400 Coupler

Model	Capacity	Stroke	Min. Height	Max. Height	Weight
RCH121	13.8 tons (12,519 kg)	1.63" (4.2 cm)	4.75" (12 cm)	6.38" (16.2 cm)	6.2 lbs (2.8 kg)
RCH123	13.8 tons (12,519 kg)	3" (7.6 cm)	7.5" (18.4 cm)	10.25" (26 cm)	9.8 lbs (4.4 kg)
RCH202	23.6 tons (21,409 kg)	2" (4.9 cm)	6.38" (16.2 cm)	8.38" (21.1 cm)	17 lbs (7.7 kg)
RCH302	36.1 tons (32,749 kg)	2.5" (6.4 cm)	7.03" (17.8 cm)	9.53" (24.4 cm)	24 lbs (10.9 kg)
RCH306	36.1 tons (32,749 kg)	6.13" (32.6 cm)	13" (33 cm)	19.13" (48.5 cm)	48 lbs (21.8 kg)
RCH603	63.6 tons (56,789 kg)	3" (7.6 cm)	9.75" (24.7 cm)	12.75" (32.3 cm)	62 lbs (28.1 kg)
RCH1003	103.1 tons (93,530 kg)	3" (7.6 cm)	10" (25.4 cm)	13" (33 cm)	132 lbs (63 kg)

# HOLLOW RAMS

## DOUBLE-ACTING



- Relief valves prevent damage in case of over-pressurization
- Material: Steel
- Baked enamel finish for increased corrosion resistance
- Collar threads enable easy fixturing
- Double-acting operation for fast retraction
- Nickel-plated, floating center tube increases product life
- Hollow plunger allows for both pull and push forces
- CR-400 couplers and dust caps included on all models
- Plunger wiper reduces contamination, extending cylinder life

Model	Capacity	Stroke	Min. Height	Max. Height	Weight
RRH307	30 tons (27,215.5 kg)	7" (17.8 cm)	13" (33 cm)	20" (50.8 cm)	48 lbs (21 kg)
RRH3010	30 tons (27,215.5 kg)	10.13" (25.8 cm)	17" (43.1 cm)	27.13" (68.9 cm)	60 lbs (27 kg)
RRH603	60 tons (54,431.1 kg)	3.5" (8.9 cm)	9.75" (24.7 cm)	13.25" (33.6 cm)	62 lbs (28 kg)
RRH606	60 tons (54,431.1 kg)	6.5" (16.6 cm)	12.75" (32.3 cm)	19.25" (48.9 cm)	78 lbs (35 kg)
RRH6010	60 tons (54,431.1 kg)	10.12" (25.7 cm)	17.25" (43.8 cm)	27.38" (69.5 cm)	101 lbs (45 kg)



## HYDRAULIC HOSES & COUPLER SETS

- 10,000 psi (700 bar) working pressure hydraulic hose
- Equipped with 3/8" NPT ends, including one swivel end
- Meets IJ100 jack hose specifications
- Made in the USA



Hose Length	No Coupler	Hi Flow Male (16050)	Complete Hi Flow (16000)	Quick Connect Female (TC-371)	Complete Coupler (TC-370)
6'	16116	16016	16160	16116-TC	16160-TC
8'	16100	16040	16030	16100-TC	16030-TC
10'	16105	16045	16035	16105-TC	16035-TC
12'	16120	16010	16025	16120-TC	16025-TC
18'	16110	16015	16020	16110-TC	16020-TC

Custom sizes available

## ACCESSORIES FOR HYDRAULIC HOSES

### HIGH FLOW HYDRAULIC COUPLERS

- Model **#16000** - Complete Set (**#16050** - Male Half, **#16060** - Female Half)
- Interchange with Enerpac C604 and Power Team/OTC 9795
- Plastic dust cover available (**Model #CD-411**)



### QUICK CONNECT HYDRAULIC COUPLERS

- 10,000 PSI (700 bar) quick connect coupling, 3/8" NPT
- Parker Series couplings (interchange with IMT couplings)
- Model **#TC-370** - Complete Set (**#TC-371** - Female Half, **#TC-372** - Male Half)



### #13122 SHUT OFF VALVE ASSEMBLY

- Allows pump to be removed while ram is extended
- For use with single acting hydraulic cylinder
- Rated at 10,000 PSI (700 BAR)



## #15920 5 QUART AIR/HYDRAULIC PUMP, STEEL

- Builds 10,000 PSI of pressure to fit the majority of tools on the market
- Operates on 80-120 PSI of inlet air pressure (standard on most compressors and shop air)
- Durable metal air motor assemblies
- Designed specific to conditions normally associated with OTR sites
- Oil capacity: 5 quarts (4.7 liters)
- Reservoir type: Steel
- Weight: 23 lbs (10.4 kg)



## #15125 CORDLESS HYDRAULIC PUMP, 10,000 PSI

- Lightweight design with integrated handle and carrying strap for portability
- Bladder reservoir prevents contamination and allows pump usage in any position
- Powerful 0,37 kW motor and 28 Volt Lithium-Ion battery deliver exceptional speed and run time
- High-strength fiberglass reinforced composite shroud for superior durability in demanding job site environments
- Cordless technology eliminates tripping hazards found in other electric or air powered pumps
- Available in both single-and doubles-acting valve configurations
- Maximum Pressure: 10,000 psi (700 bar)
- Valve Type: 3-way, 2-position
- Oil Flow Rate: 2.0 l/min at no load, 0.25 l/min at full load
- Oil Capacity: 2 liters
- 2 batteries and charger included
- Charger Voltage: 115 V
- Weight: 24.3 lbs (11 kg) with batteries

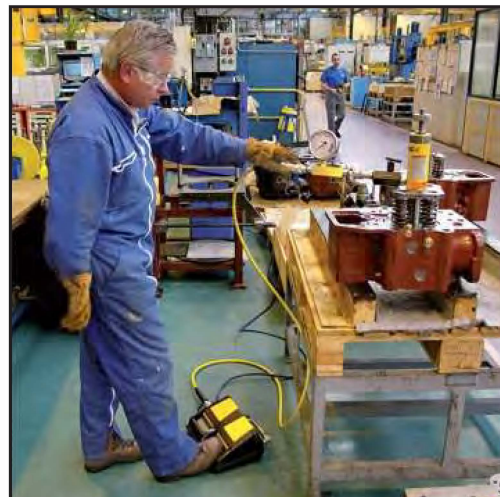




## #15001 #15120 HIGH FLOW AIR / HYDRAULIC FOOT PUMP

- Higher oil flow for increased productivity
- Closed Hydraulic system prevents contamination
- "Bladder" system prevents loss of prime and limits on usage
- Locking function for retraction
- 3 quart capacity
- 3-way, 3-position valve to control direction of hydraulic fluid in single-acting system
- Model **#15120** features a gauge

Model	Capacity	Description	Weight
15001	3 quarts	Air/hydraulic foot pump	24 lbs (11 kg)
15120	3 quarts	Air/hydraulic foot pump with gauge	24 lbs (11 kg)



**PRECISION  
CONTROL  
DURING  
ONE-PERSON  
SERVICE**



## #67500-#67530K TORQIT HIGH-PRECISION TORQUE WRENCHES

# TorqIT

HIGH-PRECISION TORQUE



- Durable and Portable Precision Torque
- Four Models From 120 Ft/Lbs to 3,000 ft/lbs
- Lithium Ion 8.0 Ah Rechargeable Battery - Full Charge in under 60 minutes
- Every Unit Calibrated In ISO17025 Laboratory
- 13-Month Warranty from date of purchase
- Made in the USA



**BATTERY-POWERED**  
FULL CHARGE  
IN 60 MINS



BATTERY



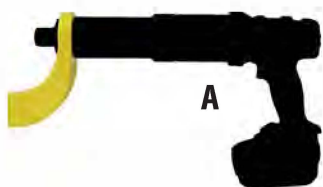
CHARGING  
KIT



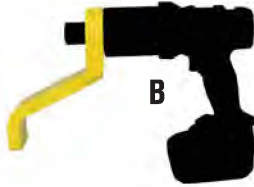
Durable carrying  
case included

Model	Description	Min. Torque	Max. Torque	Square Drive	Weight
67505K	Wrench and Battery Kit	120 ft./lbs	500 ft./lbs	3/4"	10.4lbs (4.7kg)
67510K	Wrench and Battery Kit	240 ft./lbs	1000 ft./lbs	1"	14.5 lbs (6.6kg)
67510-E6K	67510 3/3" Drive w/ 6" Nose Extension & Battery	240 ft./lbs	1000 ft./lbs	1"	16.5lbs (75kg)
67520K	Wrench and Battery Kit	500 ft./lbs	2000 ft./lbs	1"	15.9lbs (7.2kg)
67530K	Wrench and Battery Kit	750 ft./lbs	3000 ft./lbs	1"	22.5lbs (10.2kg)
67500	Battery Pack	--	--	--	1lb (.45kg)

## TORQIT REACTION ARMS



NOSE EXTENSION



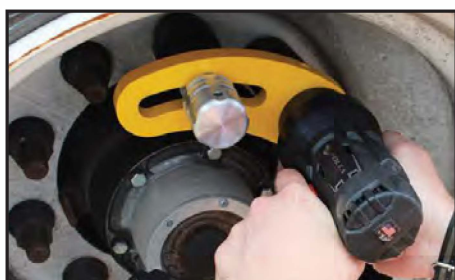
LONG EXTENDED  
REACTION ARM



STRAIGHT  
REACTION ARM



SLIDING STRAIGHT  
REACTION ARM



	1" Drive Model No.	3/4" Drive Model No.	Description
A	-	67510-E6	Drive w/ 6" Nose Extension
B	67512	67525	Long Arm for use w/ Deep Well Sockets
C	67513	67535	Straight Reaction Arm
D	67514	67545	Sliding Straight Reaction Arm



## #67300 NUT BUDDY LUG LOOSENER



- Bust loose the most stubborn wheel nuts
- Use on commercial or agricultural wheels
- Gear ratio – 58:1
- Rated output torque: 2,950 ft lbs
- Two sockets included: 1 1/2" (38mm) and 1 5/16th (33mm)
- Included extension handle used for removing wheel nut once it has been loosened by the Nut Buddy
- Weight: 19 lbs (8.5 kg)

Scan for  
a Video  
Demo

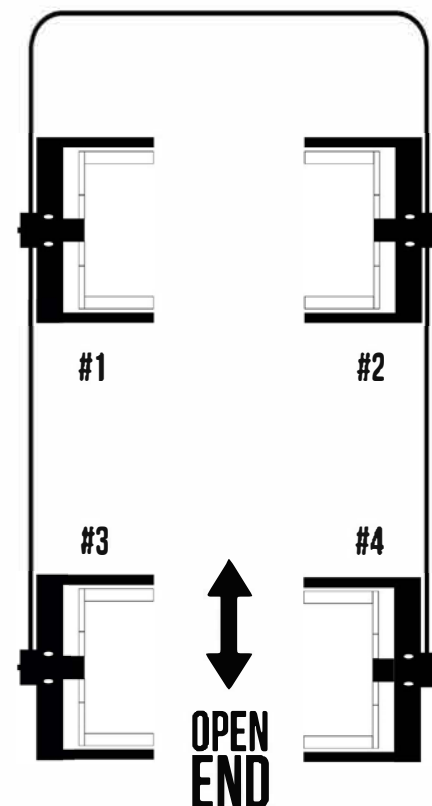


You  
Tube



## #MCL-2-36K #MCL-4-72K #MCL-6-108K MOBILE COLUMN LIFTS

- Ali certified
- Convenient operating from any column
- Portability for out of the way storage using pallets jack style base
- Available in two, four, or six column configurations
- Master control panel for individual or paired synchronized operation
- Independent mechanical locking system
- Easy to move adjustable forks
- Emergency shutoff switch on each column



**U-Shape wiring configuration  
allows for one end to be open  
for quick vehicle entry & exit**

	MCL-2-36K	MCL-4-72K	MCL-6-108K
Number of Columns	2	4	6
Capacity	36,000 lbs (16330 kg)	72,000 lbs (32660 kg)	108,000 lbs (48990 kg)
Charging Voltage	100-140VAC. 60Hz. Single Phase		
Lifting Height	67.1" (1704.34 mm)		
Column Height Max.	155.5" (3949.70 mm)		
Column Height Min.	88.6" (2250.44 mm)		
Column Width	44.1" (1120.14 mm)		
Fork Adjustable Range	12.6" - 22" (320.04 mm - 558.8 mm)		
Fork Length	17.9" (454.66 mm)		
Fork to Column Clearance	10" (254 mm)		
Rise Time	100 Seconds		
Max. Distance Between Columns	32.8" (833.12 mm)		
Min. Concrete Surface Strength	3,000 Psi		
Set-Up / Operation	Indoors		
Recommended Battery Type *	12VDC Sealed Deep Cycle Battery, BCI Group 31. AH 105		
	* Batteries Not Included		





# #67601 #67751

## BREAK-A-AWAY TORQUE WRENCHES



- Robust construction gives accurate results to  $\pm 4\%$  even in arduous working conditions
- The break-a-way action gives an unmistakable signal in the handle which can be seen and felt
- The break angle improves accuracy by reducing the possibility of over-torquing
- Dual scale, NM and FT.LB.
- Carrying case included.
- Reversible wrench can torque both left and right hand threads



**NEW**



Model	Square Drive	Range	
		LBF.FT	N.M
67601	1"	150-600	200-800
67751	1"	200-750	300-1000

# #WT1500NT AG WHEEL TROLLEY, 1.5 TON

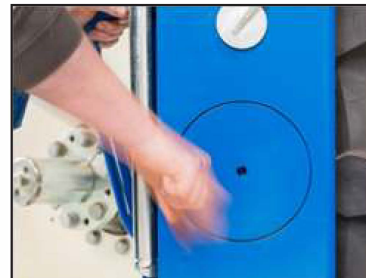
*When it comes to aiding the removal and transportation of large wheels, the WT1500NT is in a league of its own. It offers better ergonomics and improvements in both safety and maneuverability compared to other models in the market.*

- Truly a one-person operation
- A waist-high hydraulic pump handle moves the jaws in and out to accept the different size wheels
- The handle is also used to raise, lower, and rotate the wheel
- A ratchet strap secures the unbolted wheel in place to give maximum safety, this also allows good access to the wheel nuts and more efficient working space
- Unique tire handling by one person only
- Improved ergonomics, maneuverability, and operator safety
- Strongest model in the market
- Wheel sizes: min. 39.37 in - max 94.49 in
- Wheel width: max 47.24 in

**NEW**

**TRULY A ONE-PERSON  
OPERATION!**

**10** YEAR  
**3** YEAR  
UNLIMITED  
**WARRANTY**



Scan for  
a Video  
Demo



You  
Tube



## #WTA500 AC HYDRAULIC WHEEL TROLLEY, 0.5 TON



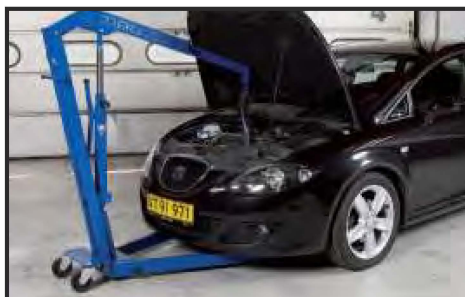
- Hydraulic wheel trolley for vans, trucks, buses, and removal of wheels and brake drums on aircrafts
- Flexible and ergonomic wheel trolley for the easy removal of wheels and brake drums
- High lifting height (28.23 in) is ideal for lifting e.g. wheels and brake drums off a transport wagon
- Lifting arms with roller bearings for easy rotation of the wheel into correct position
- Pedal operated pump leaving both hands free for working
- Bracket for easy securing of the wheel while transporting
- Hand operated dead man's release for optimum safety while lowering
- Ideal for lifting brake drums, fuel tanks, tool boxes etc.
- With 2 pcs. 360° revolving wheels
- Model #WTK - Telescopic Crane Arm add-on available (sold separately)



Model	Capacity	Lifting height	Height	Length	Width	Roller/fork length	Roller distance	Wheel sizes (diameter)	Weight
WTA500	1100 lbs	28.2" (71.6 cm)	45.5" (115.5 cm)	34.2" (86.8 cm)	38.9" (98.8 cm)	16.3"/23.6" (41.4/59.9 cm)	10.2"-27.9" (25.9-70.8 cm)	10.63"-51.18" (27-129.9 cm)	220 lbs (99.8 kg)

## WJN5 WJN10 HYDRAULIC WORKSHOP CRANES

- Hydraulic workshop crane for auto workshops and service vans
- Foldable within seconds for quick and easy storage
- When folded the crane takes up a minimum of space on the workshop floor
- Jib arm with large lifting capacity – even in 5th position
- Hard chromium plated piston rod and pump piston for long life
- Built-in safety overload valve
- Fitted with 2 castors and 2 fixed wheels for easy maneuverability even with maximum load
- Lifting hook pivots 360°
- Hand operated dead man's release for optimum safety while lowering



Model	Capacity	Lifting Height	Jib Arm	Dimensions (L x W x H)	Inner Width	Weight
WJN5	0.6 tons	79.53" - 92.13" (202 - 234 cm)	37.6" - 54.13" (95.5 - 137.5 cm)	55.21" (142 cm) x 42.52" (108 cm) x 59.84" (152 cm)	37.6" (95.5 cm)	165 lbs (75 kg)
WJN10	1.2 tons	79.53" - 92.13" (202 - 234 cm)	37.6" - 54.13" (95.5 - 137.5 cm)	55.21" (142 cm) x 43.7" (111 cm) x 59.84" (152 cm)	38.78" (98.5 cm)	200 lbs (95 kg)

## EASY GRIPPER SERIES OTR TIRE HANDLER

**NEW**



**SCAN QR  
FOR VIDEO!**



### Features:

- Safe 3-point grip
- Camera system as standard
- Precise rotation 0-50°
- Tilt function 90°
- Quick shift system - between the Gripper and the forks
- Flat arms for narrow space between tires and fenders
- Telescopic arms for handling two tires or wide duals
- Customization on request

Model	Lifting Capacity	Gripping Capacity	Compatible Accessories	Weight
<b>#94060</b> EASY GRIPPER 2160	2,200 lbs (1,000 kg)	47-85" (1200-2160 mm)	<ul style="list-style-type: none"> <li>• Quick Shift Mounting Plate</li> <li>• Quick Shift Mounting Plate</li> <li>• Hydraulic Quick Shift</li> <li>• Telescopic Arms (for 2-Tire gripping)</li> </ul>	1,200 lbs (550 kg)
<b>#94062</b> EASY GRIPPER 2400-2T	4,410 lbs (2,000 kg)	57-94" (1450-2400 mm)	<ul style="list-style-type: none"> <li>• Flat arms for narrow fenders</li> <li>• Forklift Module (for use with Quick Shift Mounting Plate)</li> </ul>	1,797 lbs (815 kg)
<b>#94095</b> EASY GRIPPER COMPACT 1-TON	2,200 lbs (1,000 kg)	44-94" (1100-2400 mm)	<ul style="list-style-type: none"> <li>• Forklift Module (for use with Quick Shift Mounting Plate)</li> </ul>	1,015 lbs (460 kg)
<b>#94096</b> EASY GRIPPER COMPACT 2-TON	4,410 lbs (2,000 kg)	57-94" (1450-2400 mm)	<ul style="list-style-type: none"> <li>• MUST BE USED WITH COMPACT MODEL</li> </ul>	1,797 lbs (815 kg)

## #94095 EASY GRIPPER COMPACT COMPACT TIRE HANDLER



- For Application on front loaders and telehandlers
- 90° tilt from vertical position
- +/-25° Precision Rotation
- Accessories Available including Customization Gripping Pipes and Quick Shift Module
- Equipped with Camera Kit and LED light



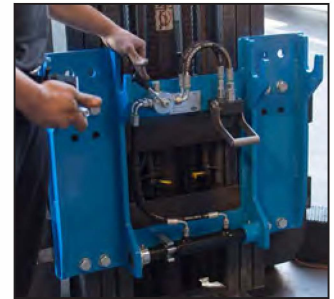
## FUNCTIONALITY



## ACCESSORIES

### QUICK SHIFT MOUNTING PLATE

Install the Quick Shift Mounting Plate directly onto forklifts, mini-loaders, telescope loaders, and/or other front loaders for the most flexible and efficient operation of the Easy Gripper and Stacker products. Ensure a quick change between forks, Gripper, Stacker, and other accessories. Required for operation.



### REMOTE CONTROL

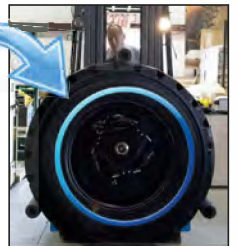
Easy Gripper and Stacker products are equipped with a compact remote control that can be mounted anywhere within the operating cab. The remote ensures simple and safe operation. A bright LED light illuminates the different operation features depending upon the Just Easy product. Only one hydraulic channel is necessary for installation.



### CAMERA KIT

Precision Camera Kit. Ensures good monitoring of the blind area in front of the loaded forklift. Equipped with night-vision for precision alignment during all service hours and conditions. Built-in IR bulb automatically turns on in areas of insufficient lighting for use in the night and underground. Included with Gripper Series.

#### 7" High -Res Screen Camera Kit



## EASY GRIPPER WORKSHOP WORKSHOP TIRE HANDLER

### Technical Data:

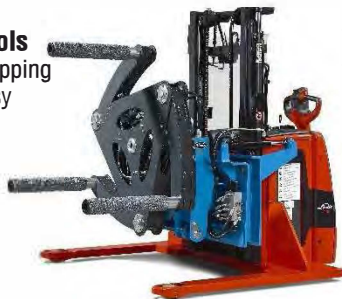
- Gripping diameter: 47.3 – 85 inch (1200 mm – 2160 mm)
- $\pm 15^\circ$  tilt from vertical position
- 50° rotation
- Pushing force: 2200 lbs (1000 kg)
- Width of stacker truck: 63 inch (1600 mm)
- Minimum turning radius: 60 inch (1530 mm)



SCAN QR  
FOR VIDEO!

### Easy accessible controls

Controls for moving and gripping tires are simple and easy



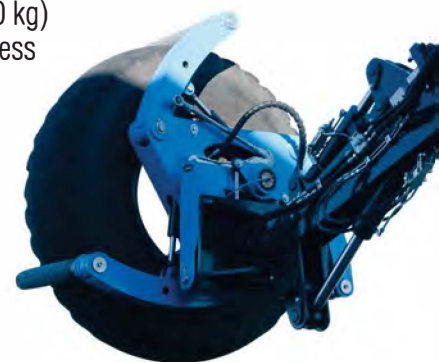
## EASY GRIPPER CRANE MODULE SERVICE TRUCK TIRE HANDLER

### Technical Data:

- Crane Module Available with 1 and 2 Ton Capacity Easy Gripper Models
- Control System can be built in most existing crane control systems
- Pushing force up to: 4400 lbs (2000 kg)
- All Grippers are delivered with wireless camera system as standard
- Tilt function 160° vertical tilt
- Precise rotation function 0-50°

### 3-Point Grip

The unique 3 point grip, offers both safety and full control



## #24855 OTR INFLATION/DEFLATION KIT

- Kit ideal for large AG and Construction OTR tire service inflation/deflation
- Kit promotes safety during inflation/deflation process
- Keeps tire techs out of trajectory rim/wheel area "danger zone"
- Components allow tire technicians to avoid
- Comes equipped with all hoses and fittings in Hi-Vis Carrying Bag\*
- Inflation/ Deflation Kit Components include:

(1) Air Muffler

(2) 20" Hydraulic Hoses

(1) Standard Bore Core Remover and Inflation Chuck with

- Lock-on Chuck (shown on 20" hose)

- Reduces inflation time by 50%

- Features a more secure lock-on style chuck

- Made of durable steel, brass, and plastic

- 1/4 Female NPT allows easy attachment to air hose

- Ideal for nitrogen purging and inflation

- Retractable core housing allows safe removal and replacement of valve core

(1) **#51236** Large Bore Core Remover Tool

- Prevents core loss during tire inflation and deflation (see details below)

(1) **#24682** 20 ft. Inflation Hose with Liquid Dial Gauge

- Equipped with Safety Quick-Connect Coupler for fast and easy connection

- Hose rated at 300 PSI

- 1/2" Flow-Through On/Off Valve with 180 PSI Liquid Fill Gauge



\*Bag style varies

## #51236 LARGE BORE CORE REMOVER

- Prevents core loss during tire inflation and deflation
- Full bore inflator/deflator allows for rapid tire inflation and deflation
- Lock-on chuck attaches securely to the valve
- 360° swivel air inlet for easy access



## #377 LOCK-ON AIR CHUCK (LONG)

- Chuck locks on valve when cocked on threads
- Has greater air flow and seat cannot be blown out if seal fails
- Has 1/4" NPT female thread. Replacement washer 313
- Also for use with Super Large Bore

## #GA-255S LARGE BORE SWIVEL FOOT GAUGE

- Nickel-plated brass
- Metal slide bar
- Easy to read
- Calibrated 10-150 in 2 lb. units
- Swivels 360° for those hard-to-reach valves



## #N-1410 TREAD DEPTH GAUGE

- Indicating bar is calibrated with 32nds on one side, other side is millimeters
- Has magnified sight-glass for easy readability
- Comes with a carrying holster
- The finest instrument available





## HALTEC INFLATORS & INFLATION SYSTEMS



### #89-F17

#### MOBILE AIRCRAFT INFLATION UNIT

IDEAL FOR MOBILE AIRCRAFT TIRE SERVICING

- Two high cylinder nitrogen tanks
- Can be used with all Haltec inflators



### #89TWIN-DS

#### DUAL SCREEN TIRE INFLATION SYSTEM

IDEAL FOR SERVICE CENTERS AND MOUNTING FACILITIES

- 1/2" inlet/outlet
- Operating range: 5-145 PSI
- Dual LCD screens indicate gauged and target pressure



### #89MTIS-5

#### MULTIPLE TIRE INFLATION SYSTEM

IDEAL FOR MULTIPLE TIRE SERVICING

- Inflates up to 5 wheels simultaneously at 5-145 psi pressure
- Semi pneumatic locking swivel wheel
- Color Coded 1/4" inflation hose
- 1/2" and 1/4" inlet/outlet
- Suitable for use with standard or large bore valves and core extraction tools
- Inlet pressure gauge
- Dual LCD screens indicate gauged & targeted pressure



### #89XDB

#### HIGH VOLUME INFLATOR

IDEAL FOR FLEET OPERATIONS, TIRE SERVICE CENTERS AND TIRE MOUNTERS

- Designed specifically for inflating large OTR tires
- 1/2" inlet/outlet
- Operating range: 5-145 PSI



### #89XTC

#### TEMPERATURE COMPENSATING INFLATOR

SPECIFICALLY DESIGNED FOR OTR INDUSTRIAL, MINING AND CONTINUOUS OPERATION APPLICATIONS

- 1/2" inlet
- Weather-proof hardware to withstand high impact, heavy use
- Wet and dry tire pressure compensation for normal and liquid filled tires
- Easily adjustable base/ambient temperature setting to optimize for any environment
- Wireless temperature transmitter
- Operating range: 5-145 PSI



B25-2	18	SLJLC150-2	22	14370	15	15633	14
BHD	21	SLJLC150-3	22	14385	15	15634	14
BL8	13	SLJLC150-6	22	14400	26	15661	7
CD-411	33	SLJLC150-AR	22	14405	26	15661P	7
DK13HLQ	17	SLJLC150K	22	14410	24	15667	12
DK20HLQ	17	SLJLC150-TC	22	14415	24	15668	12
DK20Q	17	SLJLC350-2	22	14425	26	15669	12
F250	19	SLJLC350-3	22	14460	16	15920	34
FDK2	17	SLJLC350-4	22	14461	16	16000	33
FHD100	21	SLJLC350-AR	22	14462	9	16010	33
FHD200	21	SLJLC350K	22	14463	9	16015	33
FJ40	15	SLJLC350-TC	22	14464	9	16016	33
FW	19	SLJS60	22	14465	9	16020	33
FW1	19	SLJS100	22	14466	9	16020-TC	33
G4	17	SLJS100-28A	22	14468	9	16025	33
GA-255S	44	SLJS100-038A	22	14468B	10	16025-TC	33
GSI	17	SLJS150-32A	22	14468LT	9, 10	16030	33
HHD	21	SLJS150-42A	22	14469	9	16030-TC	33
MLC-2-36K	38	SLJS150-50A	22	14470	16	16035	33
MLC-4-72K	38	SLJS200	22	14472	9	16035-TC	33
MLC-6-108K	38	SLJS200-42	22	14473	9	16040	33
N-1410	44	T3	17	14475	16	16045	33
RCH121	32	TC-370	33	14500	10	16050	33
RCH123	32	TC-371	33	14501	10	16060	33
RCH202	32	TC-372	33	14503	10	16100	33
RCH302	32	WJN5	41	14720	25	16100-TC	33
RCH306	32	WJN10	41	14980	25	16105	33
RCH603	32	WT1500NT	40	14985	25	16105-TC	33
RCH1003	32	WTA500	41	15001	35	16110	33
RRH307	32	25-1	18	15012	11	16110-TC	33
RRH603	32	25-1H	18	15022	11	16116	33
RRH606	32	25-2	18	15032	11	16116-TC	33
RRH3010	32	40-4	18	15120	35	16120	33
RRH6010	32	50-2	18	15125	34	16120-TC	33
SB65	21	50-3	18	15203	6	16160	33
SB100	21	50-3H	18	15210	6	16160-TC	33
SB150	21	65-1	19	15230	6	24682	44
SBB	18, 19	65-1H	19	15231	8	24855	44
SLJ10027	20	89-F17	45	15232	8	36300	13
SLJ10038	20	89MTIS-5	45	15234	6	36400	13
SLJ15027	20	89TWIN-DS	45	15239	6	36555	13
SLJ15038	20	89XDB	45	15245	6	51236	44
SLJ20027	20	89XTC	45	15254	7	51456	31
SLJ20038	20	100-1	21	15254P	7	61090	39
SLJ25027	20	100-1H	21	15260	7	67300	37
SLJ25038	20	100-1L	21	15260P	7	67500	36
SLJE506	22	150-1	21	15266	7	67505	36
SLJE508	22	150-1H	21	15266PL	7	67505K	36
SLJE510	22	150-1L	21	15266PLB	7	67510	36
SLJE512	22	377	44	15269PL	7	67510-E6K	36
SLJE516	22	13000	23	15300	5	67510K	36
SLJE518	22	13010	30	15301	5, 13	67520	36
SLJE606	22	13020	30	15309	5	67520K	36
SLJE608	22	13030	30	15324	5	67530	36
SLJE610	22	13040	30	15325	5, 13	67530K	36
SLJE612	22	13050	30	15336	4	67601	39
SLJE616	22	13060	30	15337	4	67751	39
SLJE618	22	13075	31	15338	4	94060	42
SLJE706	22	13076	31	15339	4	94062	42
SLJE708	22	13090	30	15341	4	94095	42
SLJE710	22	13095	30	15342	4	94096	42
SLJE712	22	13100	30	15345	28	95010	13
SLJE716	22	13121	23	15346	28	95025	13
SLJE718	22	13122	33	15347	29	95030	13
SLJE806	22	13141	23	15348	29	95035	13
SLJE808	22	13154	23	15349	29		
SLJE810	22	13155	23	15350	29		
SLJE812	22	14140	15	15351	29		
SLJE816	22	14140SK	15	15352	29		
SLJE818	22	14220	27	15353	4		
SLJE906	22	14220-001	27	15355	5		
SLJE908	22	14220-002	27	15360	29		
SLJE910	22	14225	27	15366	5		
SLJE912	22	14225-001	27	15367	5		
SLJE916	22	14225-002	27	15370	4, 13		
SLJE918	22	14304	12	15631	14		
SLJLC150-1	22	14360	25	15632	14		





## HYDRAULIC TOOL REPAIR SERVICES

(352) 799-1111

✉ [REPAIRS@AMEINTL.NET](mailto:REPAIRS@AMEINTL.NET)

AMEINTERNATIONALREPAIRS

## TOOL REPAIR WITHIN 6 EASY STEPS:

- **In-House** Factory Repairs by Trained Technicians
- **OEM Original Parts Inventory**—Not Aftermarket
- **Fast Turnaround**—Same Day Estimates Available
- Easy Pick-Up Using **Prepaid Shipping Labels**
- **FREE** Telephone & Skype Troubleshooting
- Repairs on ALL makes and brands of tools, including **IMT, FEC, Stellar, SPX, Enerpac and ESCO**



## SCAN TO WATCH



1. Call AME International at 877-755-4AME (4263) to obtain RGA # for the return.



2. Package the item(s) in a cardboard box; please place any pumps that are leaking in a plastic garbage bag to contain any fluids leaked during shipment.



3. Place the pre-addressed, prepaid UPS label onto the outside of the box. Be sure to note the tracking number on the UPS label for your records.



4. Place the completed repair ticket into the clear plastic sleeve onto the outside of the box.



5. Give the package to any UPS driver or drop the package off at the nearest UPS center or drop-box.



6. Your tool will be estimated upon receipt and repaired within 24 hours of approval.



## SCAN TO BEGIN A REPAIR



## ASK ABOUT OUR TOOL BUY-BACK PROGRAM!



### FREE HAT WITH TOOL REPAIR

HAVE YOUR TOOL REPAIRED BY AME – WE’LL FIX IT FAST AND SEND YOU AN AME LOGO HAT!

### FREE HAT OFFER

Please fill out your address below and send this along with your tool to be repaired.

Company \_\_\_\_\_

Name \_\_\_\_\_

Address \_\_\_\_\_

City \_\_\_\_\_

State \_\_\_\_\_

Zip \_\_\_\_\_

Tel \_\_\_\_\_

Email \_\_\_\_\_





# ACME

DIVISION

## AG & CONSTRUCTION MAINTENANCE EQUIPMENT

**833-323-ACME (2263)**



 **HALTEC**  
CORPORATION

**833-323-ACME(2263)**

**[www.ameintl.net](http://www.ameintl.net)**